

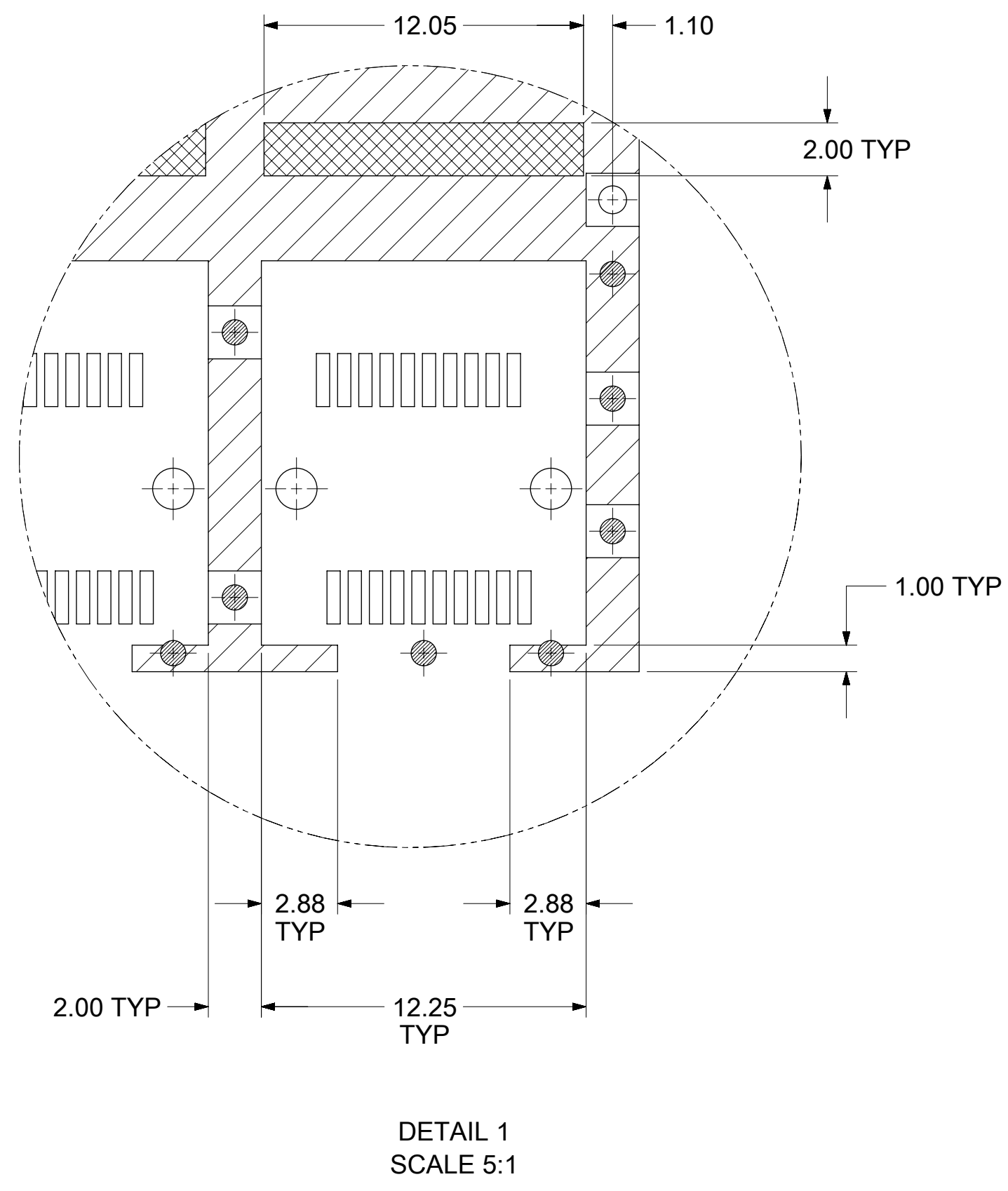
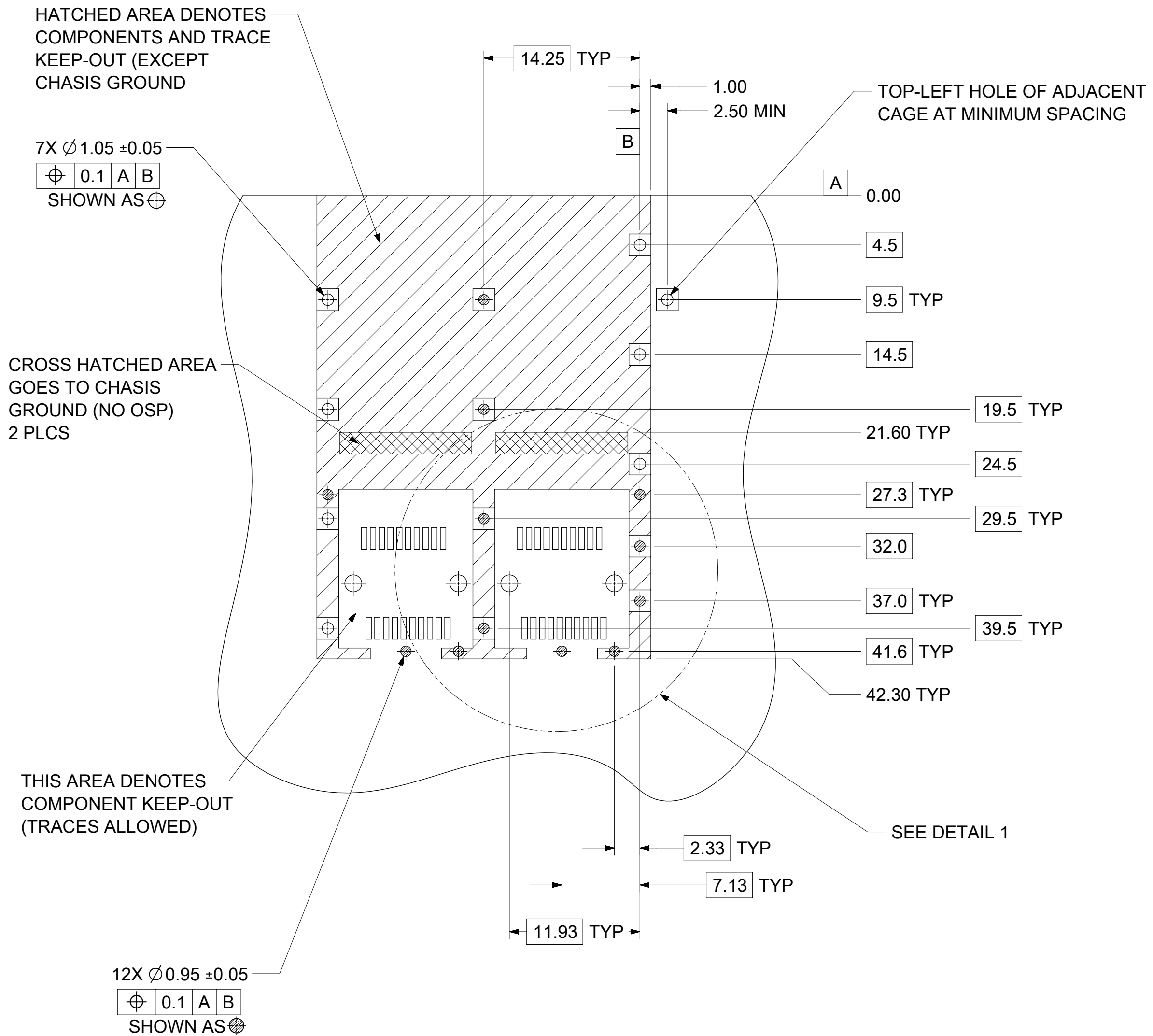
PN/DATE CODE TO BE PRINTED ON THE BACK OF COMPLETED CAGE ASSEMBLY APPROXIMATELY AS SHOWN.

- NOTES:
- MATERIAL:
CAGE: 0.25mm THICK COPPER ALLOY, NICKEL PLATED.
SPRING FINGERS: STAINLESS STEEL
 - PRESS FIT LEGS 3.05mm LONG
 - PORTS ARE DESIGNED FOR SFP+ TRANSCEIVERS AND ARE COMPATIBLE WITH SFP TRANSCEIVERS. THE TOP SURFACE OF THE MODULE MUST BE FLAT (NO PRODUCT LABEL RECESS) AND THERMALLY CONDUCTIVE TO FUNCTION OPTIMALLY.
 - WELD SPOT MAY SHOW SLIGHT MATERIAL DISCOLORATION.
 - NO RoHS EXEMPTIONS.

WEEK/YEAR DATE CODE TABLE	
WW	WEEK OF THE YEAR 01 THRU 52 (EXAMPLE:01= FIRST WEEK OF YEAR 52=LAST WEEK OF YEAR)
YY	22, 23, 24 ETC. EXAMPLE: YEAR 2022 = 22

FUNCTIONAL SYMBOLS $\nabla_A = 0$ $\nabla_C = 0$ $\nabla_P = 0$	THIS DRAWING CONTAINS INFORMATION THAT IS PROPRIETARY TO MOLEX ELECTRONIC TECHNOLOGIES, LLC AND SHOULD NOT BE USED WITHOUT WRITTEN PERMISSION	CURRENT REV DESC: SEE REVISION TABLE									
	DIMENSION UNITS: mm	SCALE: 2.5:1	EC NO: 707262								
	GENERAL TOLERANCES (UNLESS SPECIFIED)		4 PLACES ±		2022/04/20						
	ANGULAR TOL ± 1.0°		3 PLACES ±		2022/05/26						
DIVISIONAL SYMBOLS $\nabla_A = 0$ $\nabla_C = 0$ $\nabla_P = 0$	2 PLACES ± 0.13		APPR: SCHIEN		2022/05/27						
	1 PLACE ± 0.25		INITIAL REVISION:		DOCUMENT NUMBER						
	0 PLACES ±		DRWN: ABHILT2		111118220						
	DRAFT WHERE APPLICABLE MUST REMAIN WITHIN DIMENSIONS		APPR: SCHIEN		PSD ASY A						
THIRD ANGLE PROJECTION		DRAWING		SERIES		MATERIAL NUMBER		CUSTOMER		SHEET NUMBER	
C-SIZE		111111		111118220		1 OF 5					

PCB LAYOUT - SINGLE SIDE ONLY



- NOTES:**
- PADS AND VIAS CONNECT TO CHASSIS GROUND
RECOMMEND PADS TO BE 2.00mm SQUARE
 - RECOMMENDED THRU HOLE PLATING INCLUDES HASL, OSP, OR IMMERSION (GOLD, SILVER, OR TIN)
 - CONNECTOR PAD LAYOUT PER SFP+ MSA WILL ACCOMODATE MOLEX CONNECTOR SERIES 170382 OR EQUIVALENT
 - SPACING BETWEEN PORTS IS 14.25mm
 - 1.57mm MINIMUM PCB THICKNESS FOR SINGLE SIDED USE.

FUNCTIONAL SYMBOLS	THIS DRAWING CONTAINS INFORMATION THAT IS PROPRIETARY TO MOLEX ELECTRONIC TECHNOLOGIES, LLC AND SHOULD NOT BE USED WITHOUT WRITTEN PERMISSION		
	DIMENSION UNITS	SCALE	CURRENT REV DESC: SEE REVISION TABLE
$\frac{F}{A} = 0$	mm	1:1	EC NO: 707262 DRWN: ABHILT2 CHK'D: TKUMARKC APPR: SCHIEN
$\frac{F}{C} = 0$	GENERAL TOLERANCES (UNLESS SPECIFIED)		
$\frac{F}{P} = 0$	ANGULAR TOL ± 1.0°		2022/04/20
DIVISIONAL SYMBOLS	4 PLACES	±	2022/05/26
	3 PLACES	±	2022/05/27
	2 PLACES	± 0.13	
	1 PLACE	± 0.25	
	0 PLACES	±	
DRAFT WHERE APPLICABLE MUST REMAIN WITHIN DIMENSIONS		THIRD ANGLE PROJECTION	DRAWING
			C-SIZE
		SERIES	111111
DOCUMENT STATUS		DOC TYPE	DOC PART
P1	RELEASE DATE	2022/05/27	10:20:25
MATERIAL NUMBER		CUSTOMER	SHEET NUMBER
111118220			2 OF 5

molex

ZSFP+ 1X2 CAGE, 3.05 MM PRESS FIT TYPE, W/ SUS EMI SPRING FINGER & UNDERBELLY GASKET

PRODUCT CUSTOMER DRAWING

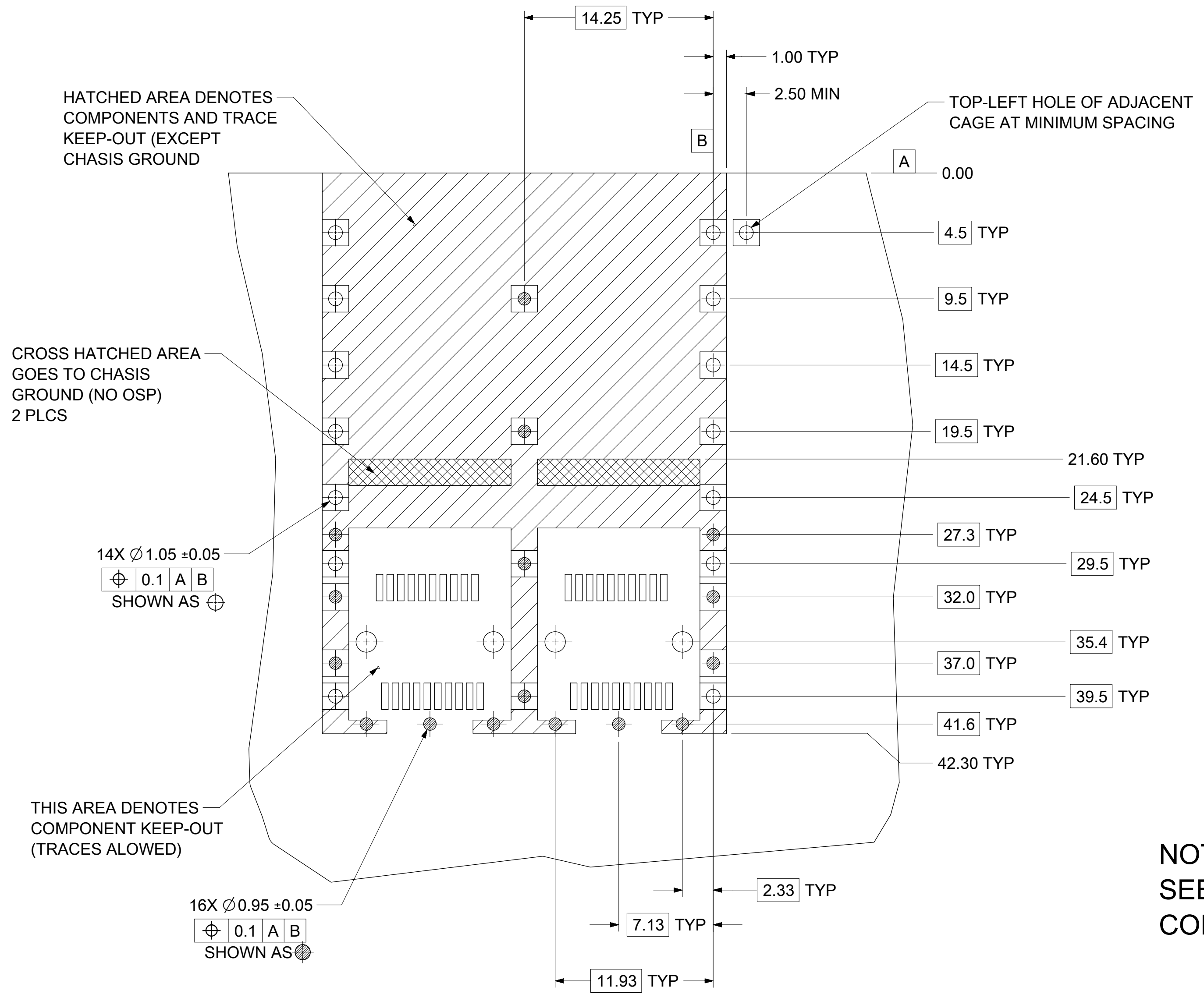
DOCUMENT NUMBER: 111118220

DOC TYPE: PSD

DOC PART: ASY

REVISION: A

PCB LAYOUT FOR BELLY TO BELLY MOUNTING



HATCHED AREA DENOTES COMPONENTS AND TRACE KEEP-OUT (EXCEPT CHASSIS GROUND)

CROSS HATCHED AREA GOES TO CHASSIS GROUND (NO OSP) 2 PLCS

14X Ø1.05 ±0.05
 ⊕ 0.1 A B
 SHOWN AS ⊕

THIS AREA DENOTES COMPONENT KEEP-OUT (TRACES ALLOWED)

16X Ø0.95 ±0.05
 ⊕ 0.1 A B
 SHOWN AS ⊕

TOP-LEFT HOLE OF ADJACENT CAGE AT MINIMUM SPACING

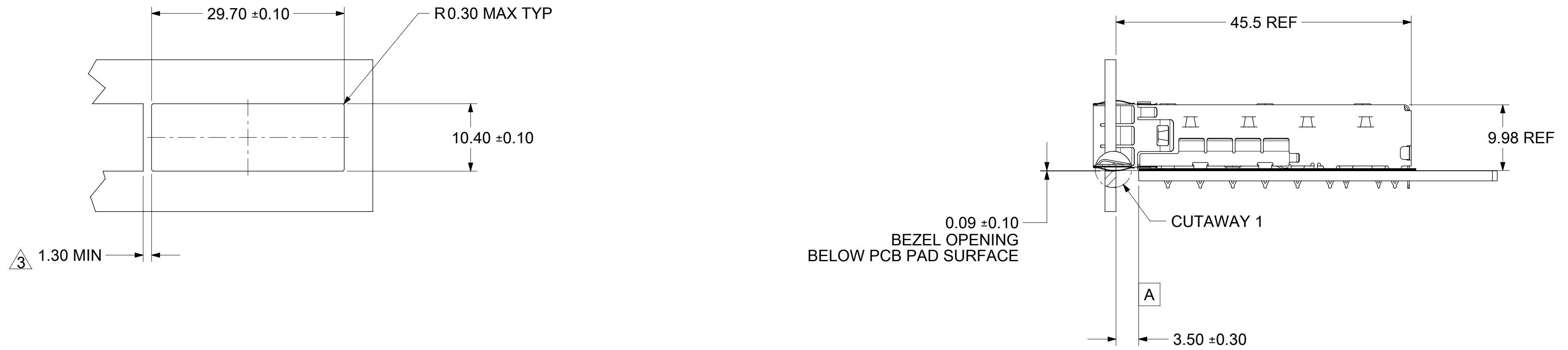
NOTE:
 SEE SHEET 2 FOR HOST CONNECTOR DETAIL

- NOTES:**
1. PADS AND VIAS CONNECT TO CHASSIS GROUND
 RECOMMEND PADS TO BE 2.00mm SQUARE
 2. RECOMMENDED THRU HOLE PLATING INCLUDES HASL, OSP, OR IMMERSION (GOLD, SILVER, OR TIN)
 3. CONNECTOR PAD LAYOUT PER SFP+ MSA WILL ACCOMODATE MOLEX CONNECTOR SERIES 170382 OR EQUIVALENT
 4. SPACING BETWEEN PORTS IS 14.25mm
 5. 3.00mm MINIMUM PCB THICKNESS FOR BELLY TO BELLY USE.

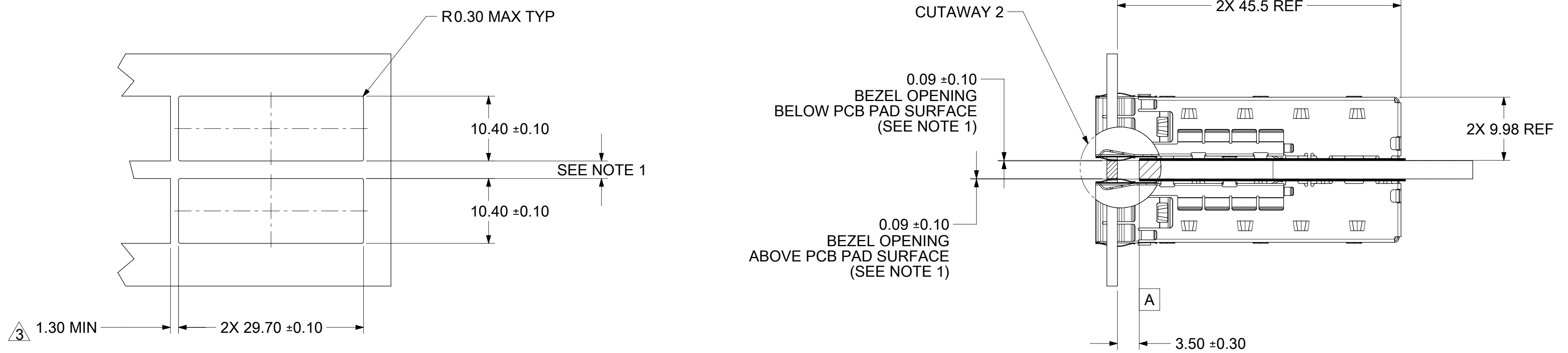
FUNCTIONAL SYMBOLS		THIS DRAWING CONTAINS INFORMATION THAT IS PROPRIETARY TO MOLEX ELECTRONIC TECHNOLOGIES, LLC AND SHOULD NOT BE USED WITHOUT WRITTEN PERMISSION		CURRENT REV DESC: SEE REVISION TABLE		molex	
DIMENSION UNITS		SCALE		EC NO: 707262			
mm		4:1		DRWN: ABHILT2 2022/04/20		PRODUCT CUSTOMER DRAWING	
GENERAL TOLERANCES (UNLESS SPECIFIED)		ANGULAR TOL ± 1.0°		CHK'D: TKUMARKC 2022/05/26		DOCUMENT NUMBER	
4 PLACES ±		3 PLACES ±		APPR: SCHIEN 2022/05/27		111118220	
DIVISIONAL SYMBOLS		2 PLACES ± 0.13		INITIAL REVISION:		DOC TYPE DOC PART REVISION	
1 PLACE ± 0.25		0 PLACES ±		DRWN: ABHILT2 2022/04/20		PSD ASY A	
DRAFT WHERE APPLICABLE MUST REMAIN WITHIN DIMENSIONS		THIRD ANGLE PROJECTION		APPR: SCHIEN 2022/05/27		MATERIAL NUMBER	
		DRAWING		SERIES		CUSTOMER	
		C-SIZE		111111		111118220	
						SHEET NUMBER	
						3 OF 5	

DOCUMENT STATUS	P1	RELEASE DATE	2022/05/27	10:20:25
-----------------	----	--------------	------------	----------

BEZEL AND BOARD POSITION DIMENSIONS FOR SINGLE SIDE MOUNTING (SPRING FINGER)



BEZEL AND BOARD POSITION DIMENSIONS FOR BELLY TO BELLY MOUNTING (SPRING FINGER)





- NOTE:**
1. PCB THICKNESS VARIATION MUST BE CONSIDERED WHEN DETERMINING BEZEL OPENING SIZE AND LOCATION.
 2. CAGE LEG STANDOFF WILL PIERCE BELLY GASKET WHEN PROPERLY PRESSED INTO PCB.
 3. THIS DIMENSION IS FOR REF ONLY. USER CAN MODIFY IT DEPENDS ON APPLICATION. HOLE OF ADJACENT CAGE ON PCB LAYOUT VARIES ON MODIFICATION.

FUNCTIONAL SYMBOLS	THIS DRAWING CONTAINS INFORMATION THAT IS PROPRIETARY TO MOLEX ELECTRONIC TECHNOLOGIES, LLC AND SHOULD NOT BE USED WITHOUT WRITTEN PERMISSION		CURRENT REV DESC: SEE REVISION TABLE		molex
	DIMENSION UNITS	SCALE			
$\nabla_A = 0$	mm	2:1			ZSFP+ 1X2 CAGE, 3.05 MM PRESS FIT TYPE, W/ SUS EMI SPRING FINGER & UNDERBELLY GASKET
$\nabla_C = 0$	GENERAL TOLERANCES (UNLESS SPECIFIED)				
$\nabla_P = 0$	ANGULAR TOL ± 1.0°				PRODUCT CUSTOMER DRAWING
DIVISIONAL SYMBOLS	4 PLACES ±		EC NO: 707262	2022/04/20	
	3 PLACES ±		DRWN: ABHILT2	2022/05/26	
	2 PLACES ± 0.13		CHK'D: TKUMARKC	2022/05/27	
	1 PLACE ± 0.25		APPR: SCHIEN		
	0 PLACES ±		INITIAL REVISION:		
			DRWN: ABHILT2	2022/04/20	
			APPR: SCHIEN	2022/05/27	
	DRAFT WHERE APPLICABLE MUST REMAIN WITHIN DIMENSIONS	THIRD ANGLE PROJECTION	DRAWING	SERIES	DOCUMENT NUMBER
			C-SIZE	111111	111118220
					DOC TYPE
					PSD
					DOC PART
					ASY
					REVISION
					A
					MATERIAL NUMBER
					111118220
					CUSTOMER
					SHEET NUMBER
					4 OF 5

H
G
F
E
D
C
B
A

REV	DATE	DESCRIPTION
A	2022/05/25	INITIAL RELEASE

FUNCTIONAL SYMBOLS	THIS DRAWING CONTAINS INFORMATION THAT IS PROPRIETARY TO MOLEX ELECTRONIC TECHNOLOGIES, LLC AND SHOULD NOT BE USED WITHOUT WRITTEN PERMISSION												
$\nabla_A = 0$ $\nabla_C = 0$ $\nabla_P = 0$	DIMENSION UNITS	SCALE	CURRENT REV DESC: SEE REVISION TABLE							 ZSFP+ 1X2 CAGE, 3.05 MM PRESS FIT TYPE, W/ SUS EMI SPRING FINGER & UNDERBELLY GASKET			
	mm	1:1	EC NO: 707262 DRWN: ABHILT2 2022/04/20 CHK'D: TKUMARKC 2022/05/26 APPR: SCHIEN 2022/05/27										
DIVISIONAL SYMBOLS	GENERAL TOLERANCES (UNLESS SPECIFIED)		PRODUCT CUSTOMER DRAWING							DOCUMENT NUMBER			
4 PLACES ± 3 PLACES ± 2 PLACES ± 0.13 1 PLACE ± 0.25 0 PLACES ±	ANGULAR TOL ± 1.0°		INITIAL REVISION: DRWN: ABHILT2 2022/04/20 APPR: SCHIEN 2022/05/27							111118220	PSD	ASY	A
DRAFT WHERE APPLICABLE MUST REMAIN WITHIN DIMENSIONS	THIRD ANGLE PROJECTION		DRAWING	SERIES	MATERIAL NUMBER		CUSTOMER		SHEET NUMBER				
	C-SIZE	111111	111118220		5 OF 5								