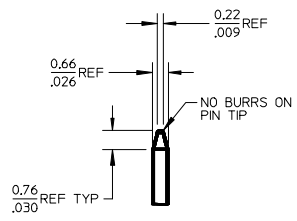
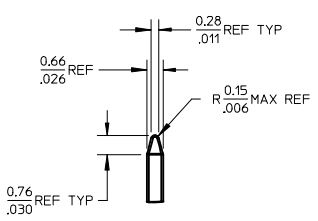


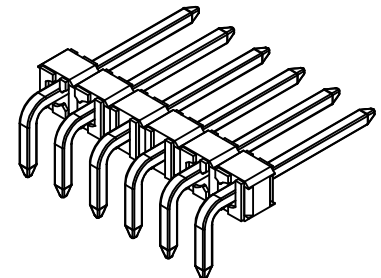
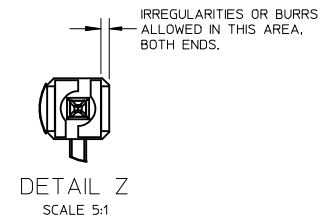
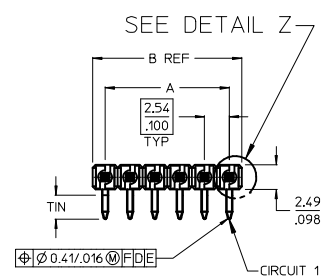
NO. CKTS	DIM. A	DIM. B
2	2.54	5.08
3	1.00	2.00
3	5.08	7.62
3	.200	.300
4	7.62	10.16
4	.300	.400
5	10.16	12.70
5	.400	.500
6	12.70	15.24
6	.500	.600
7	15.24	17.78
7	.600	.700
8	17.78	20.32
8	.700	.800
9	20.32	22.86
9	.800	.900
10	22.86	25.40
10	.900	1.000
11	25.40	27.94
11	1.000	1.100
12	27.94	30.48
12	1.100	1.200
13	30.48	33.02
13	1.200	1.300
14	33.02	35.56
14	1.300	1.400
15	35.56	38.10
15	1.400	1.500
16	38.10	40.64
16	1.500	1.600
17	40.64	43.18
17	1.600	1.700
18	43.18	45.72
18	1.700	1.800
19	45.72	48.26
19	1.800	1.900
20	48.26	50.80
20	1.900	2.000
21	50.80	53.34
21	2.000	2.100
22	53.34	55.88
22	2.100	2.200
23	55.88	58.42
23	2.200	2.300
24	58.42	60.96
24	2.300	2.400
25	60.96	63.50
25	2.400	2.500
26	63.50	66.04
26	2.500	2.600
27	66.04	68.58
27	2.600	2.700
28	68.58	71.12
28	2.700	2.800
29	71.12	73.66
29	2.800	2.900
30	73.66	76.20
30	2.900	3.000
31	76.20	78.74
31	3.000	3.100
32	78.74	81.28
32	3.100	3.200
33	81.28	83.82
33	3.200	3.300
34	83.82	86.36
34	3.300	3.400
35	86.36	88.90
35	3.400	3.500
36	88.90	91.44
36	3.500	3.600



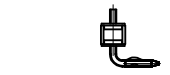
DETAIL X
SCALE 5:1
SEE NOTE 10



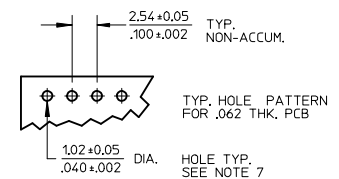
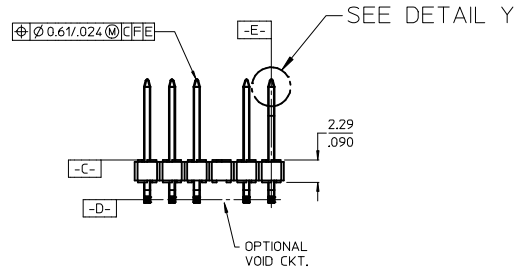
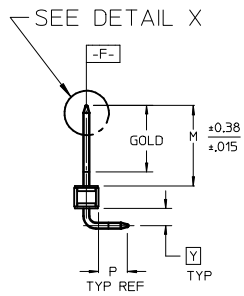
DETAIL Y
SCALE 5:1
SEE NOTE 10



- NOTES:
- MATERIAL: GLASS FILLED NYLON
UL. 94V-0, COLOR: BLACK
 - FINISH:
(154) OVERALL TIN: 0.00254/.000100 MIN. OVER
NICKEL: 0.00127/.000050 MIN.
(208) SELECT GOLD: 0.00038/.000015 MIN.
SELECT TIN: 0.00254/.000100 MIN.
OVERALL NICKEL UNDERPLATE: 0.00127/.000050 MIN.
(228) SELECT GOLD: 0.00076/.000030 MIN.
SELECT TIN: 0.00254/.000100 MIN.
OVERALL NICKEL UNDERPLATE: 0.00127/.000050 MIN.
 - PRODUCT SPECIFICATION: PS 10-07.
 - PACKAGING INFORMATION: SEE TABLES
 - SOLDERABILITY PER SMES-152.
 - PIN PUSH OUT FORCE: 3 LBS. MIN
 - KINK PIN OPTION NOT RECOMMENDED FOR 2 CIRCUIT PARTS.
HOLE SIZE MAY NEED TO BE ADJUSTED FOR 2 CIRCUIT PARTS
WITH KINK OPTION FOR PROPER INSERTION INTO THE PCB.
SEE SMES-42003 FOR ADDITIONAL INFORMATION
ON KINK PIN DIRECTION AND PLACEMENT.
 - HEADERS ARE NOT STACKABLE ON 2.54/.100 CENTERS.
 - THIS PART CONFORMS TO CLASS B REQUIREMENTS OF
COSMETIC SPECIFICATION PS-45499-002.
 - PIN TIP DIMENSIONS ARE SHOWN FOR REFERENCE ONLY.
DIMENSIONS APPLY PRIOR TO PLATING OR ASSEMBLY.



OPTIONAL KINK PIN
SEE NOTE 7



2-*	A1
1	A4
SHEET	REV

PIN TIP TOLERANCE	QUALITY SYMBOLS	GENERAL TOLERANCES (UNLESS SPECIFIED)		DIMENSION STYLE		SCALE	DESIGN UNITS	THIRD ANGLE PROJECTION	
		mm	INCH	MM/IN	2:1	INCH	2-*	A1	
EC NO: UCP2013-3063	▽/E=0	4 PLACES	± --- ± ---	DRAWN BY	DATE	TITLE KK 100 HEADER ASSEMBLY FLAT RIGHT ANGLE BREAKAWAY, LEAD-FREE			
DRWN:MKIPPER 2013/08/09	▽/E=0	3 PLACES	± --- ± .010	SAMIEC	2004/07/20				
CHKD:ANDERSON 2013/08/09	▽/E=0	2 PLACES	± 0.25 ± .015	CHECKED BY	DATE	DOCUMENT NO. SD-42377-002			
APPR:FSMITH 2013/08/27	▽/E=0	1 PLACE	± 0.38 ± ---	SAMIEC	2004/07/20				
		0 PLACE	± ±	APPROVED BY	DATE	SHEET NO. 1 OF 2			
				MARGULIS	2004/07/20				
A4		ANGULAR ±1/2° DRAFT WHERE APPLICABLE MUST REMAIN WITHIN DIMENSIONS		MATERIAL NO. SEE CHART		THIS DRAWING CONTAINS INFORMATION THAT IS PROPRIETARY TO MOLEX INCORPORATED AND SHOULD NOT BE USED WITHOUT WRITTEN PERMISSION			

