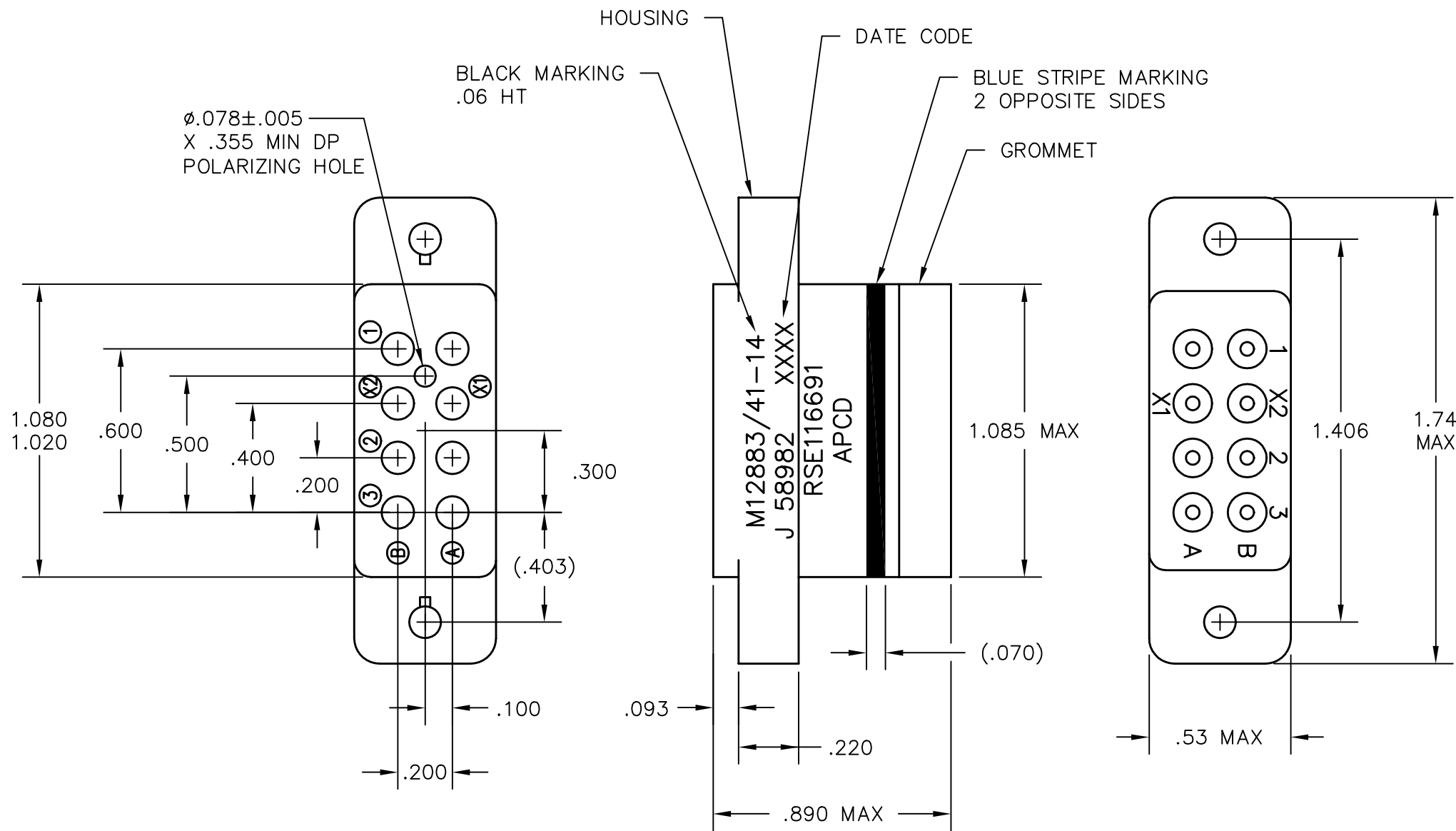
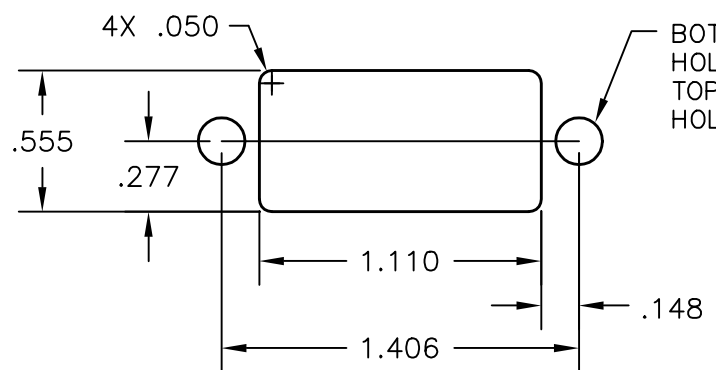


REV	ECN	APP'D
G	5515	JT 9/14/04



- NOTES:
- PART MEETS REQUIREMENTS PER MIL-PRF-12883.
  - MATERIALS:  
 SOCKET BODY: POLYETHERIMIDE PER MIL-P-46184  
 GROMMET: SILICONE RUBBER PER ZZ-R-765  
 HARDWARE: CRES STEEL AND CADMIUM CHROMATE FINISH.  
 CONTACT RETAINERS: BERYLLIUM COPPER  
 SOCKET CONTACTS: COPPER ALLOY, HARD GOLD PLATED PER MIL-G-45204
  - OPERATING RANGE:  
 TEMPERATURE: -65°C TO 125°C  
 INSULATION RESISTANCE: 1000 MEGOHMS MIN.  
 DIELECTRIC WITHSTANDING VOLTAGE:  
 1500 VRMS AT SEA LEVEL,  
 500 VRMS AT 80,000 FT. ALTITUDE  
 VIBRATION: MIL-STD-202, METHOD 204,  
 TEST CONDITION G  
 SHOCK: MIL-STD-202, METHOD 213,  
 TEST CONDITION C
  - PART SUPPLIED WITH MOUNTING HARDWARE.
  - PART SUPPLIED WITH CONTACTS PER TABLE BELOW.



PART NO.	CONTACTS SUPPLIED	MARKING
RSE116690	NONE	RSE116691
RSE116691	8X 16/20 M39029/92-534	

DIMENSIONS ANSI Y14.5M UNITS: INCHES ACAD FILE	TOLERANCES .XX ±.01 .XXX ±.005 ANGLES ±2°	PROJECTION 	<b>Amphenol Pcd</b> SPECIFICATION DRAWING			TITLE RELAY SOCKET 8 POSITION, SIZE 16 M12883/41-14		
			ENGR S. KONDO 9/14/2004	CHKD D. GANDHI 9/14/2004	APPD J. TON 9/14/2004	SIZE B	DWG NO. RSE116690	REV G
ORIGINAL	THIS DOCUMENT CONTAINS PROPRIETARY INFORMATION WHICH IS THE CONFIDENTIAL PROPERTY OF AMPHENOL PCD INC. PEABODY, MA			CODE: 58982	SCALE: 2X	SHEET 1 OF 1		

RSE116690

RSE116690