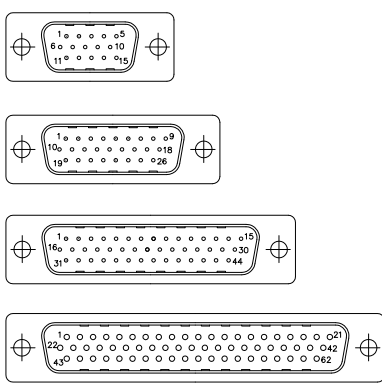
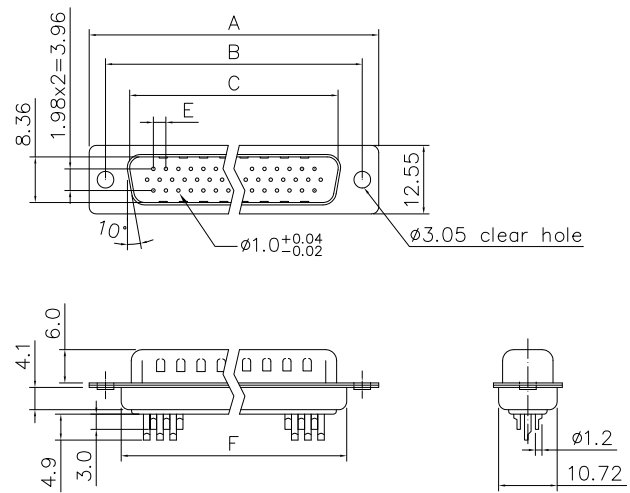


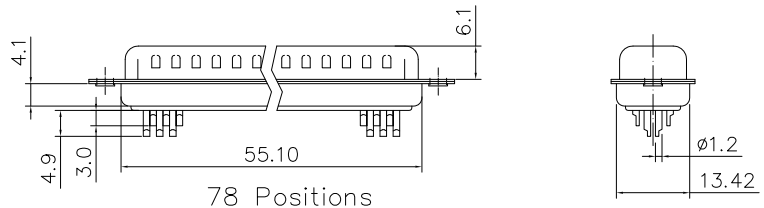
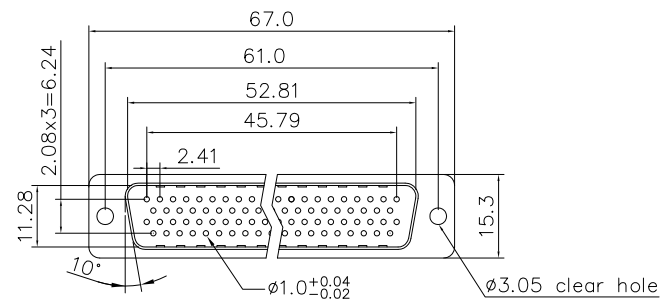
This document is the property of Amphenol Corporation and is delivered on the express condition that it is not to be disclosed, reproduced or used, in whole or in part, for manufacture or sale by anyone other than Amphenol Corporation without its prior consent, & that no right is granted to disclose or to use any information in this document.

Customer drawing



Dimensions

Shell Size	Positions	A	B	C	E	F
E	15	30.81	24.99	16.92	2.29	19.20
A	26	39.20	33.30	25.25	2.29	27.70
B	44	53.04	47.04	38.96	2.29	41.10
C	62	69.40	63.50	55.42	2.41	57.30



REVISIONS

SYM	ECN	DESCRIPTION	DATE	APPROVED
1	HK--	First Release Drawing	10/18/17	IP
2	HK--	Added pin OD and tolerances	08/11'22	Tony.Tang

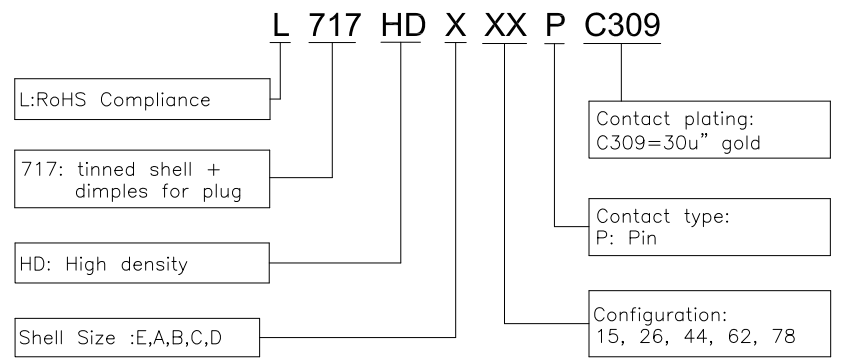
D-SUB TECHNICAL DATA

SHELL : Steel, 100u" min Tin over 50u" min nickel over 50u" min Copper
 BODY : Glass-Filled Thermoplastic PBT, UL94V-0, color black
 CONTACTS : Copper alloy
 30u" Gold flash over 50u" min nickel on mating area
 100u" min tin over 50u" min nickel on solder area

ELECTRICAL : Voltage rating 250 VAC/RMS
 Current Rating :3 AMP
 Withstanding Voltage >1000 VAC/RMS
 Insulation resistance >1000 M Ohms
 Contact resistance 20 mOhms max

MARKING : Amphenol...(Series No.)
 Commercial reference
 Manufacturing date

PRODUCT CODE



UNLESS OTHERWISE SPECIFIED TOLERANCES		APPROVAL		DATE
U.S.	METRIC	DRAWN	Bella.Fu	08/11'22
.X	+/- 0.50	CHECKED	Tony.Tang	08/11'22
.XX	+/- 0.30	CHECKED		
.XXX	+/- 0.20			
FRACTIONS	+/-			
ANGLES	+/-			
FOR MATERIALS AND FINISHES SEE NOTES		DRAWING FILE :		
REMOVE SHARP EDGES		ANGLE OF PROJECTION		
DIMENSIONS				
U.S.	INCHES			
METRIC	MM			

Amphenol		
TITLE Solder type, D-Sub connector		
SIZE	DRAWING NO.	REV.
A4	L717HDXXXPC309	2
SCALE	NONE	SHEET 1 OF 1