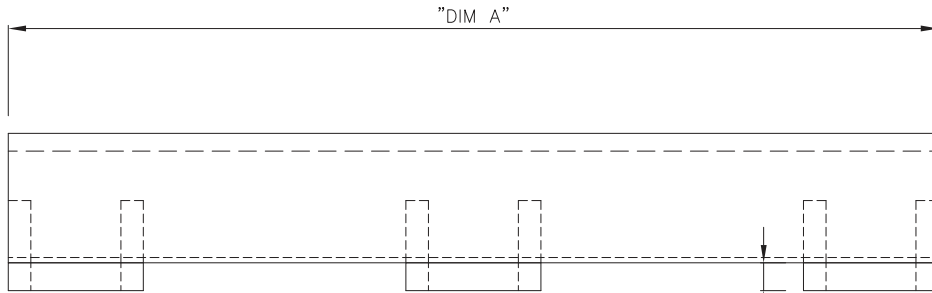
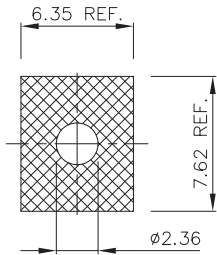


PRODUCT NUMBER 89628-XXX

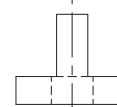
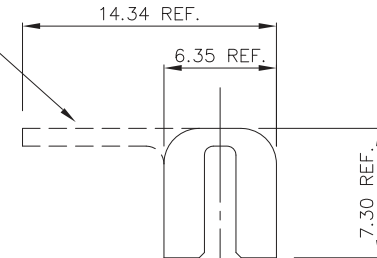
KEEP OUT AREA ON BOARD FOR STIFFENER/INSERT ATTACHMENT.

TAIL-PROTECT OPTION (SEE CHART ON PAGE 2)

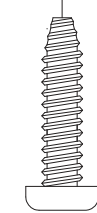


INSERTS SHOWN INSTALLED IN POSITION SEE NOTE BELOW

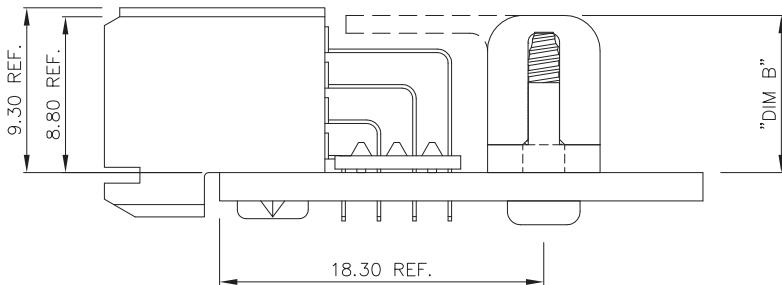
"DIM C" CLEARANCE FOR WASHOUT



TORX(tm) SELF-TAPPING SCREW. REQUIRES A #2 TORX(tm) DRIVER



NOTE: THIS PRODUCT COMES AS A KIT AND IS UNASSEMBLED. SEE CHART ON PAGE TWO FOR MORE INFORMATION.



mat'l. code		surface		tolerance		projection		product family	
-----		ISO 1302 ✓		ISO 406 ISO 1101				METRAL (tm)	
tolerances unless otherwise specified		angles		linear		mm		title	
K	v22878	SCS	10/21/92					BOARD STIFFENER ASSEMBLY	
L	v23674	SCS	12/15/92					title	
M	v30017	SCS	1/12/93	0°±2'				89628	
N	v41850	SCS	12/01/94	dr	STU STONER	9/15/90		sheet 1 of 2	
P	v50964	SCS	7/31/95	enfr	R. DOUTRICH	9/15/90		size A3	
R	v70347	MDF	3/04/97	chr	STU STONER	9/15/90		type Product Customer Drawing	
S	M06-0286	MNR	7/27/06	appd	STU STONER	9/15/90			
sheet	revisor	S	S						
index	sheet	1	2						



Copyright FCI