

5

4

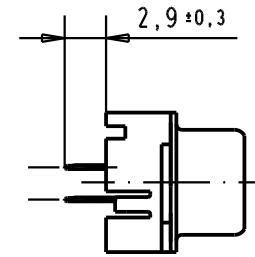
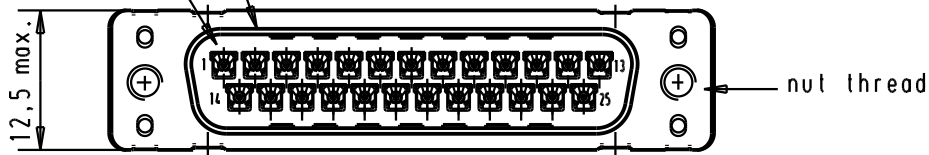
3

2

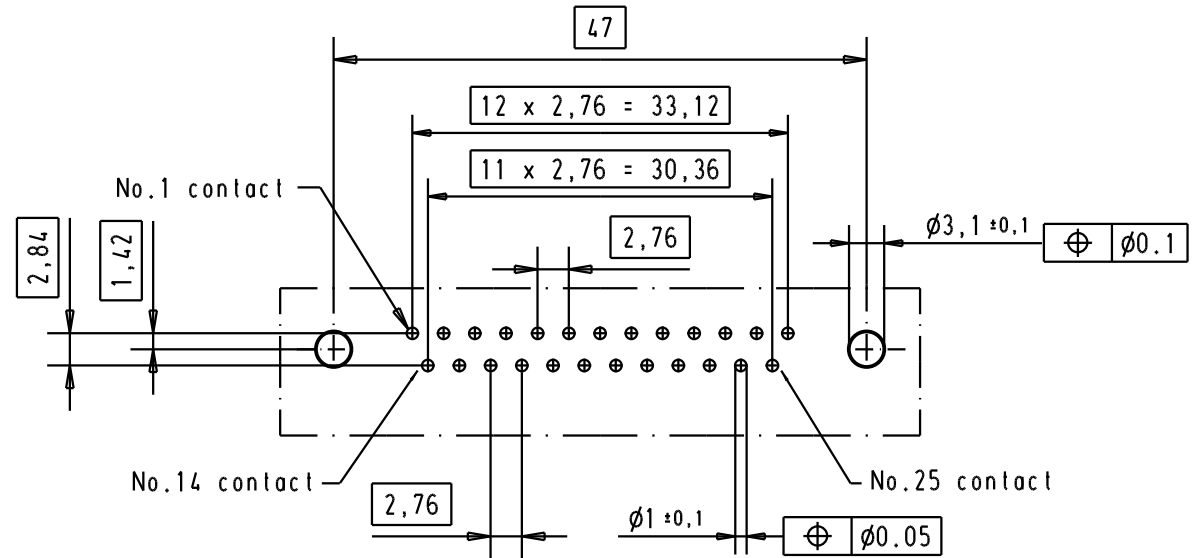
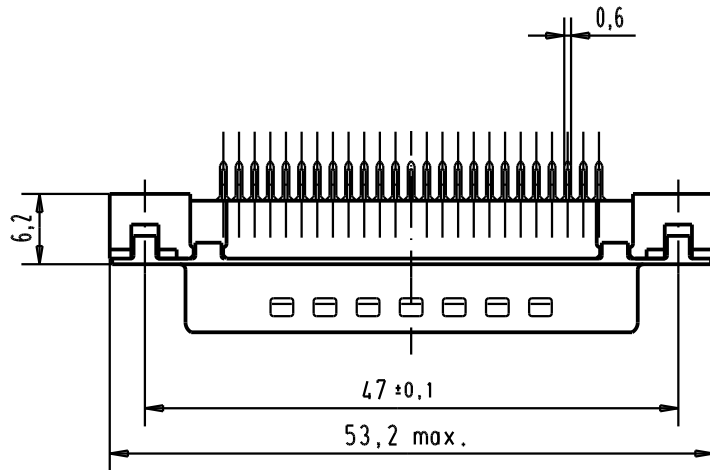
1

Mating face according to : MIL-C-24308 / DIN 41652 / CECC 75301-802

No.1 contact



Printed board layout  
component side



A

09 65 329 3701	M3	1								<p>All Dim. in mm Orig. Size DIN A 4</p>	D-Sub, High temperature, 25 poles, male, straight, with solder pins 2,9 and nuts.	Maßstab/ Scale  1.5:1
09 65 329 6701	M3	2					Detail.	05/03/02	CV			
09 65 329 7701	M3	3					Insp.					
09 65 329 3702	4-40 UNC	1					Stand.					
09 65 329 6702	4-40 UNC	2	31892	22/04/04	JH	HARTING EURL F-95972 Paris				TB 09 65 329 x70x	Blatt/ Page 2	
09 65 329 7702	4-40 UNC	3	29723	05/03/02	CV							
Part number	Nut thread	Performance level	Mod.	Dat.	Name					Sub.		