

Tefzel 28 AWG Wire Insulation Properties

Property	Test Method	Unit	Value
Thermal Properties			
Nominal Melting Point	ASTM D3159	°C (°F)	255-280 (491-536)
Flow Rate	ASTM D315	g/10 min	20
Upper Service Temperature	UL746	°C	135
Mechanical Properties			
Tensile Strength, 23°C (73°F)	ASTM D3159	MPa, (psi)	40, (6,500)
Specific Gravity	ASTM D792	-	1.71
Ultimate Elongation, 23°C (73°F)	ASTM D3159	%	300
Flexural Modulus, 23°C (73°F)	ASTM D790	MPa (psi)	1,200 (170,000)
Impact Strength, 23°C (73°F)	ASTM D256	J/m (ft-lb/in.)	No Break
Hardness, Durometer	ASTM D2240	Shore D	63
Compressive Strength	ASTM D695	MPa, (psi)	38 (5,500)
Linear Coefficient of Expansion, 0-100°C (32-212°F)	ASTM E831	mm/mm/°C in./in./°F	12.6x 10 ⁻⁵ (7.0 x 10 ⁻⁵)
Electrical Properties			
Dielectric Strength, 0.25mm (0.010in.)	ASTM D149	kV/mm (V/0.001in.)	70 (1,800)
Dielectric Constant, 1MHz, 23°C (73°F)	ASTM D1531	-	2.5-2.6
Dissipation Factor, 1MHz, 23°C (73°F)	ASTM D1531	-	0.00540
Volume Resistivity	ASTM D257	ohm cm	1 x 10 ¹¹ (1 x 10 ¹¹)
Arc Resistance	ASTM D49	seconds	122
General Properties			
Water Absorption, 24 h	ASTM D570	%	0.007
Weather and Chemical Resistance	-	-	Excellent
Limiting Oxygen Index	ASTM D2863	%	30-32

Vector 28AWG Tefzel wire is rated 300V at 150 degrees C

Slit-N-Wrap® Wire

Tefzel Insulated Silver Plated Wire for use with No. 02 Bit

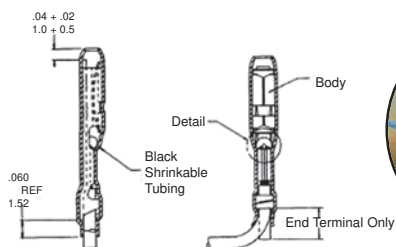
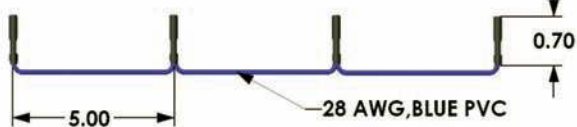
Part No.	AWG	Color	Spool Dia.	Feet/Spool	Spools/Pkg
W28-6A	28	green	1"	50	2
W28-6B	28	red	1"	50	2
W28-6D	28	blue	1"	50	2
W28-6E	28	white	1"	50	2
W28-6F	28	yellow	1"	50	2
W28-6H	28	black	1"	50	2
W28-6AU	28	green	1.5"	150	1
W28-6BU	28	red	1.5"	150	1
W28-6DU	28	blue	1.5"	150	1
W28-6EU	28	white	1.5"	150	1
W28-6FU	28	yellow	1.5"	150	1
W28-6HU	28	black	1.5"	150	1



T120-1

Slip-On Contacts

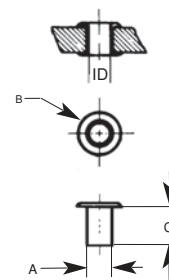
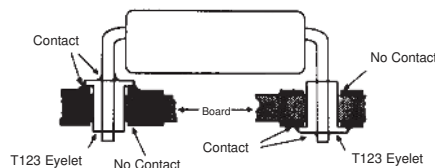
- Reels of slip-on contacts. 5" apart
- Slips onto .025" square posts
- 28 gage PVC insulated blue wire
- Temperature Range: -310 to 221°F (-190 to 105°C)



Part No.	Contact Description	Package Quantity.
T120-1/50	installed on wire	Reel of 50
T120-1/250	installed on wire	Reel of 250

Eyelets T15.23, T123

- 2 versions provide hole size reduction
T123 - reduces .055" dia. holes to .042"
- T123 eyelets are copper with .0003" to .0005" thick tin plating
T15.23 - reduces .062" dia. holes to .042"
- Simulates copper thru hole plating
- Used to commit power and ground planes



Part No.	Qty	A	B	C	ID
T15.23/M	1000	.062"	.105"	.093"	.042"
T123/500	500	.055"	.105"	.093"	.042"
T123/1000	1000	.055"	.105"	.093"	.042"