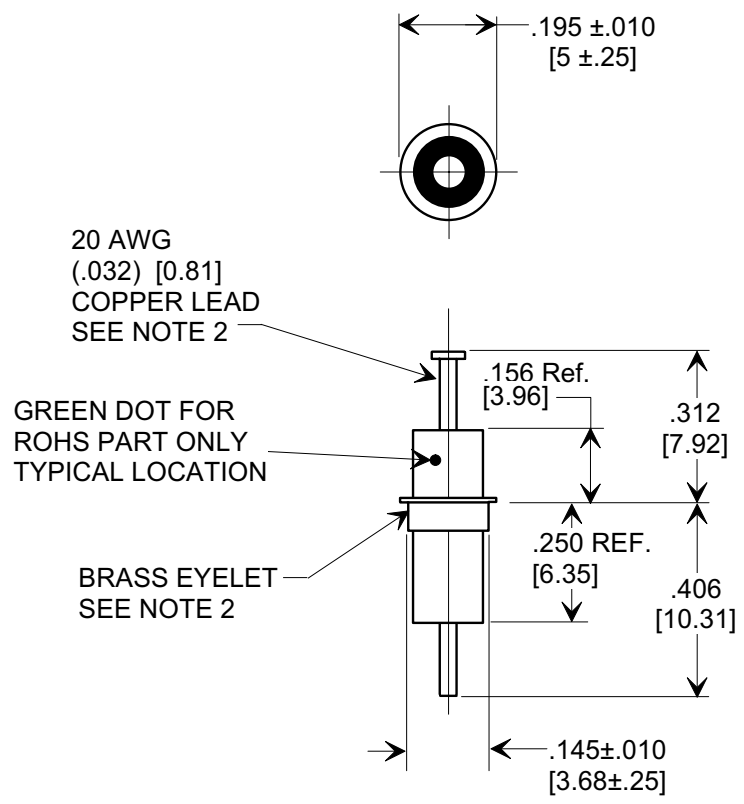
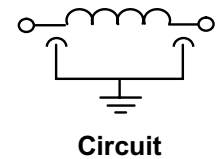
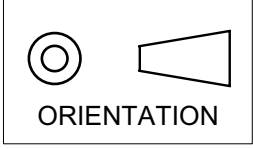


MARKETING SALES DRAWING
DIMENSIONS IN INCHES - DO NOT SCALE THIS DRAWING
DIMENSIONS IN METRIC - []

Electrical Testing
per Tusonix standard
test plans and Mil-Std-202
Test Methods.



20 AWG
(.032) [0.81]
COPPER LEAD
SEE NOTE 2

GREEN DOT FOR
ROHS PART ONLY
TYPICAL LOCATION

BRASS EYELET
SEE NOTE 2

Notes:

1. Tusonix Standard part number: 4101-001.
Tusonix RoHS compliant part number: 4101-001 LF.
Customer must specify Standard or RoHS part number when ordering.
2. Lead finish: Standard Part No.: 60/40 solder plated. RoHS Part No. Silver Plated.
Eyelet finish Standard Part No.: 60/40 solder plated. RoHS Part No. Silver Plated.
3. Part Marking: Standard has no marking. RoHS part: Green Dot.

MIN. CAP (pF)	WORKING VOLTAGE (VVDC)		CURRENT Idc	DWV @ 2 SEC.	I.R. MIN.	MINIMUM NO-LOAD INSERTION LOSS (dB) AT 25°C PER MIL-STD-220			
	85°C	125°C				10 MHz	100 MHz	1 GHz	10 GHz
1500	350	200	10A	700 VDC	10 G Ω	3	45	70	70

X-2015 Rev-0	REVISION RECORD	0	Original Release C.O.	REMOVED -S FROM TITLE & ADDED NEW FORMAT. S.M. 01-16-97 19980319-2-02 NOTES 1-3 & DWV ,IR , GREEN DOT ADDED L.E. 04-11-05 20050407-5-03	TUSONIX TUCSON, ARIZONA	--TOLERANCES-- Unless Otherwise Specified DECIMAL ± .031 [.79] ANGLES ±	Title EYELET STYLE EMI FILTER	
		8	RDRWN TO CMP. FRMIT MTRC DMS ADDED. EC 8-19-96				Drawn E.C. 08-09-96	Scale NONE
		9	REVISED I.L. TITLE. S.M. 01-16-97				Approved B.M. 08-09-96	
		10	REMOVED -S FROM TITLE & ADDED NEW FORMAT. S.M. 01-16-97				A	
		11	NOTES 1-3 & DWV ,IR , GREEN DOT ADDED L.E. 04-11-05					