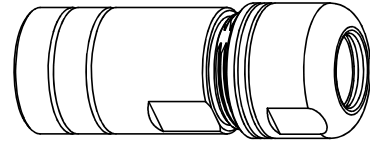
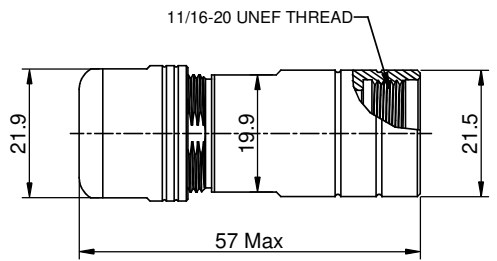
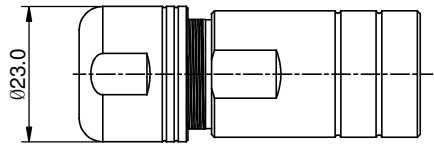
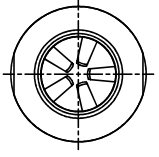


REVISIONS					
REV	ECO	DESCRIPTION	DATE	BY	APPR
B1	-	RELEASED DRAWING	JUN-20-2014	BEN	TOMMY



P/N	SHIELDING RING	CABLE RANGE
RT0L-12CG-C1	WITHOUT	Ø6-Ø10.5mm
RT0L-12CG-C2	WITHOUT	Ø8.5-Ø12.5mm
RT0L-12CG-S1	WITH	Ø6-Ø10.5mm
RT0L-12CG-S2	WITH	Ø8.5-Ø12.5mm

- NOTES : (UNLESS OTHERWISE SPECIFIED)**
- 1. MATERIAL :**
- 1.1. NUT : ZINC ALLOY, NICKEL PLATED.
  - 1.2. CLAMP INSERT : THERMOPLASTIC UL94 V-0.
  - 1.3. EMI SHIELDING RING : STAINLESS STEEL
  - 1.4. BACK SHELL : ZINC ALLOY, NICKEL PLATED.
  - 1.5. O-RING: SILICONE RUBBER.
  - 1.6. GROMMET : RUBBER.
2. ROHS COMPLIANT.
3. ALL DIMENSIONS ARE FOR REFERENCE USE ONLY.

QUANTITY	PART NUMBER	DESCRIPTION	ITEM
<b>MATERIALS LIST</b>			
<small>UNLESS OTHERWISE SPECIFIED</small> 1) All dimensions are in metric(mm). 2) Tolerances are as follows: 1 PL DEC ±0.30   Fractions: ±1/64 2 PL DEC ±0.15   Angles: ±1° 3 PL DEC ±0.08 3) Note reference =		SIGNATURES DRAWN: BEN CHECKED: ENGINEER: APPROVAL:	DATE JUN-20-2014
MATERIAL SPECIFICATIONS:  PROCESS SPECIFICATIONS:  NEXT ASSY:		 Sine Systems - www.amphenol-sine.com 44724 Morley Drive Clinton Township, MI 48036  <b>ECO-MATE,CORD GRIP,            SIZE 12</b>	
		SIZE: B C- SCALE: NONE	DWG NO: RT0L-12CG-xx REVISION: B1 SHEET 1 OF 1

TITLE: ECO-MATE,CORD GRIP,SIZE 12  
 DWG NO: RT0L-12CG-XX  
 REV: B1  
 SH: 1  
 OF: 1