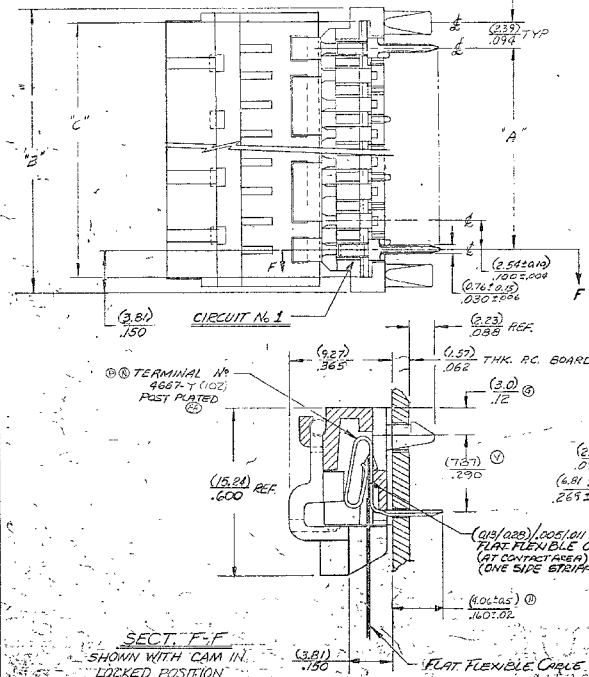
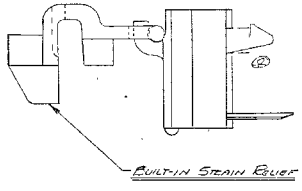
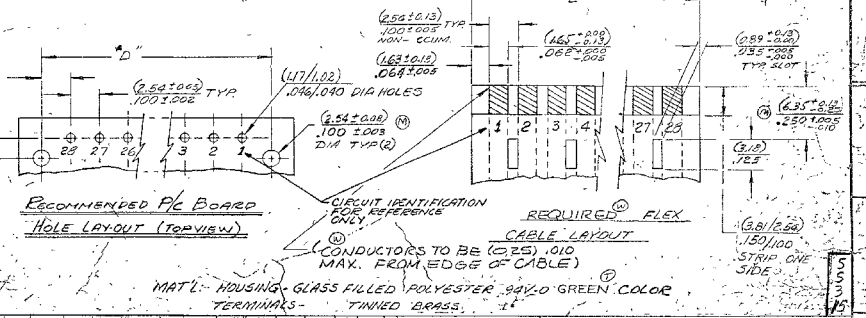


NOTES:
1) SEE PS-4850 FOR REFERENCE.



| PART NO. | ENG NO. | NUMBER OF CIRCUITS | DIM. A | DIM. B | DIM. C | DIM. D | DIM. E | CABLE SLOTS FOR STRAIN RELIEF LOCATED BETWEEN |
|------------|-----------|--------------------|-------------------------------|------------------------------|---------------------------------|-------------------------------|-------------------------------|---|
| 15-25-4051 | A-4850-5 | 5 | (10.16 ± 0.05) 900 ± 0.06 | (17.78 ± 0.51) 700 ± 0.02 | (4.99 ± 0.28) (3) 590 ± 0.05 | (14.34 ± 0.62) 580 ± 0.03 | (18.97 ± 0.82) 590 ± 0.03 | 1 & 2, 3 & 4 |
| -4061 | -6 | 6 | (2.20 ± 0.05) 500 ± 0.03 | (0.32) 800 ± | (2.53) 690 ± | (7.07 ± 0.08) 688 ± 0.03 | (7.93) 690 ± | 4 & 5 |
| -4071 | -7 | 7 | (5.24 ± 0.18) 600 ± 0.07 | (2.66) 900 ± | (2.06) 790 ± | (20.02 ± 0.68) 789 ± 0.03 | (20.96) 790 ± | 5 & 6 |
| -4081 | -8 | 8 | (17.78 ± 0.51) 700 ± 0.02 | (2.66) 1000 ± | (2.61) 890 ± | (21.85 ± 0.68) 888 ± 0.03 | (22.81) 890 ± | 3 & 4, 7 & 8 |
| -4091 | -9 | 9 | (20.32 ± 0.18) 900 ± 0.03 | (2.92) 1100 ± | (2.81) 990 ± | (26.10 ± 0.68) 988 ± 0.03 | (26.51) 990 ± | 8 & 9 |
| -4101 | -10 | 10 | (22.86 ± 0.28) 1000 ± 0.03 | (3.02) 1200 ± | (2.79) 1090 ± | (27.61 ± 0.68) 1088 ± 0.03 | (27.83) 1090 ± | 9 & 10 |
| -4111 | -11 | 11 | (25.40 ± 0.28) 1200 ± 0.03 | (3.02) 1300 ± | (3.23) 1190 ± | (30.16 ± 0.13) 1188 ± 0.03 | (30.23) 1190 ± | 10 & 11 |
| -4121 | -12 | 12 | (27.94 ± 0.28) 1400 ± 0.03 | (3.56) 1400 ± | (3.27) 1290 ± | (32.71 ± 0.13) 1288 ± 0.03 | (32.77) 1290 ± | 11 & 12 |
| -4131 | -13 | 13 | (30.48 ± 0.28) 1600 ± 0.03 | (3.80) 1500 ± | (3.31) 1390 ± | (35.26 ± 0.13) 1388 ± 0.03 | (35.31) 1390 ± | 12 & 13 |
| -4141 | -14 | 14 | (33.02 ± 0.28) 1800 ± 0.03 | (4.04) 1600 ± | (3.35) 1490 ± | (37.79 ± 0.13) 1488 ± 0.03 | (37.85) 1490 ± | 13 & 14 |
| -4151 | -15 | 15 | (35.56 ± 0.28) 1800 ± 0.03 | (4.28) 1700 ± | (4.03) 1590 ± | (40.32 ± 0.13) 1588 ± 0.03 | (40.37) 1590 ± | 14 & 15 |
| -4161 | -16 | 16 | (38.10 ± 0.28) 1800 ± 0.03 | (4.52) 1800 ± | (4.07) 1690 ± | (42.85 ± 0.13) 1688 ± 0.03 | (42.92) 1690 ± | 15 & 16 |
| -4171 | -17 | 17 | (40.64 ± 0.28) 1800 ± 0.03 | (4.76) 1900 ± | (4.11) 1790 ± | (45.38 ± 0.13) 1788 ± 0.03 | (45.47) 1790 ± | 16 & 17 |
| -4181 | -18 | 18 | (43.18 ± 0.28) 1800 ± 0.03 | (5.00) 2000 ± | (4.05) 1890 ± | (47.91 ± 0.13) 1888 ± 0.03 | (47.99) 1890 ± | 17 & 18 |
| -4191 | -19 | 19 | (45.72 ± 0.28) 1800 ± 0.03 | (5.24) 2100 ± | (4.09) 1990 ± | (50.44 ± 0.13) 1988 ± 0.03 | (50.55) 1990 ± | 18 & 19 |
| -4201 | -20 | 20 | (48.26 ± 0.28) 1800 ± 0.03 | (5.48) 2200 ± | (4.03) 2090 ± | (52.97 ± 0.13) 2088 ± 0.03 | (52.09) 2090 ± | 19 & 20 |
| -4211 | -21 | 21 | (50.80 ± 0.28) 2000 ± 0.03 | (5.72) 2300 ± | (4.07) 2190 ± | (55.50 ± 0.13) 2188 ± 0.03 | (55.63) 2190 ± | 20 & 21 |
| -4221 | -22 | 22 | (53.34 ± 0.28) 2200 ± 0.03 | (5.96) 2400 ± | (4.11) 2290 ± | (58.03 ± 0.13) 2288 ± 0.03 | (58.17) 2290 ± | 21 & 22 |
| -4231 | -23 | 23 | (55.88 ± 0.28) 2200 ± 0.03 | (6.20) 2500 ± | (4.05) 2390 ± | (60.56 ± 0.13) 2388 ± 0.03 | (60.72) 2390 ± | 22 & 23 |
| -4241 | -24 | 24 | (58.42 ± 0.28) 2400 ± 0.03 | (6.44) 2600 ± | (4.09) 2490 ± | (63.09 ± 0.13) 2488 ± 0.03 | (63.25) 2490 ± | 23 & 24 |
| 15-25-4251 | A-4850-25 | 25 | (60.96 ± 0.28) 2400 ± 0.03 | (6.68 ± 0.51) 2700 ± 0.02 | (4.57 ± 0.25) 2590 ± 0.05 | (65.72 ± 0.62) 2588 ± 0.03 | (65.79 ± 0.62) 2590 ± 0.03 | 1 & 2, 24 & 25 |

NOT TOOLED AX-4850-26 26 (60.96 ± 0.28) (6.68 ± 0.51) (4.57 ± 0.25) (65.72 ± 0.62) (65.79 ± 0.62) 1 & 2, 24 & 25



| REV | DATE | DESCRIPTION |
|-----|------|---------------------------|
| 1 | | INITIAL DESIGN |
| 2 | | REVISED TO ADD DIMENSIONS |
| 3 | | REVISED TO ADD DIMENSIONS |
| 4 | | REVISED TO ADD DIMENSIONS |
| 5 | | REVISED TO ADD DIMENSIONS |
| 6 | | REVISED TO ADD DIMENSIONS |
| 7 | | REVISED TO ADD DIMENSIONS |
| 8 | | REVISED TO ADD DIMENSIONS |
| 9 | | REVISED TO ADD DIMENSIONS |
| 10 | | REVISED TO ADD DIMENSIONS |
| 11 | | REVISED TO ADD DIMENSIONS |
| 12 | | REVISED TO ADD DIMENSIONS |
| 13 | | REVISED TO ADD DIMENSIONS |
| 14 | | REVISED TO ADD DIMENSIONS |
| 15 | | REVISED TO ADD DIMENSIONS |
| 16 | | REVISED TO ADD DIMENSIONS |
| 17 | | REVISED TO ADD DIMENSIONS |
| 18 | | REVISED TO ADD DIMENSIONS |
| 19 | | REVISED TO ADD DIMENSIONS |
| 20 | | REVISED TO ADD DIMENSIONS |
| 21 | | REVISED TO ADD DIMENSIONS |
| 22 | | REVISED TO ADD DIMENSIONS |
| 23 | | REVISED TO ADD DIMENSIONS |
| 24 | | REVISED TO ADD DIMENSIONS |
| 25 | | REVISED TO ADD DIMENSIONS |
| 26 | | REVISED TO ADD DIMENSIONS |
| 27 | | REVISED TO ADD DIMENSIONS |
| 28 | | REVISED TO ADD DIMENSIONS |
| 29 | | REVISED TO ADD DIMENSIONS |
| 30 | | REVISED TO ADD DIMENSIONS |
| 31 | | REVISED TO ADD DIMENSIONS |

FLAT FLEXIBLE CABLE CONNECTOR WITH TYPICAL ATTACHED TERMINALS

MOLEX INCORPORATED

1-2376

DATE: 11-1-74

ENG. NO. 4850-N

DATE: 11-1-74

BY: [Signature]

3% DIMENSIONAL TOLERANCES UNLESS OTHERWISE SPECIFIED

DO NOT SCALE DRAWINGS