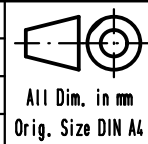


Part number	Performance level	A±0,2	B±0,2	Max C	Mod.	Dot.	Name	Dot.	Name	Sub.	Maßstab/ Scale
09 66 354 7511	3	6	4,20	3,5							1,5:1
09 66 354 6511	2	6	4,20	3,5			Detail.	14/02/00	JFB		
09 66 354 5511	0,76 µm Au	6	4,20	3,5			Insp.				1,5:1
09 66 354 7515	3	5,7	4,35	3,9	EC01000	27/11/09	Stand.				
09 66 354 6515	2	5,7	4,35	3,9	27980	05/03/01			JFB	HARTING EURL F-95972 Paris	Blatt/ Page 1 / 3
09 66 354 5515	0,76 µm Au	5,7	4,35	3,9	26574	14/02/00			JFB		
										HARTING	TB 09 66 354 X51X



D-Sub, female, straight, 25 poles, with press-in termination, version contact grounding pins



Sub. TB 09 66 354 X51X