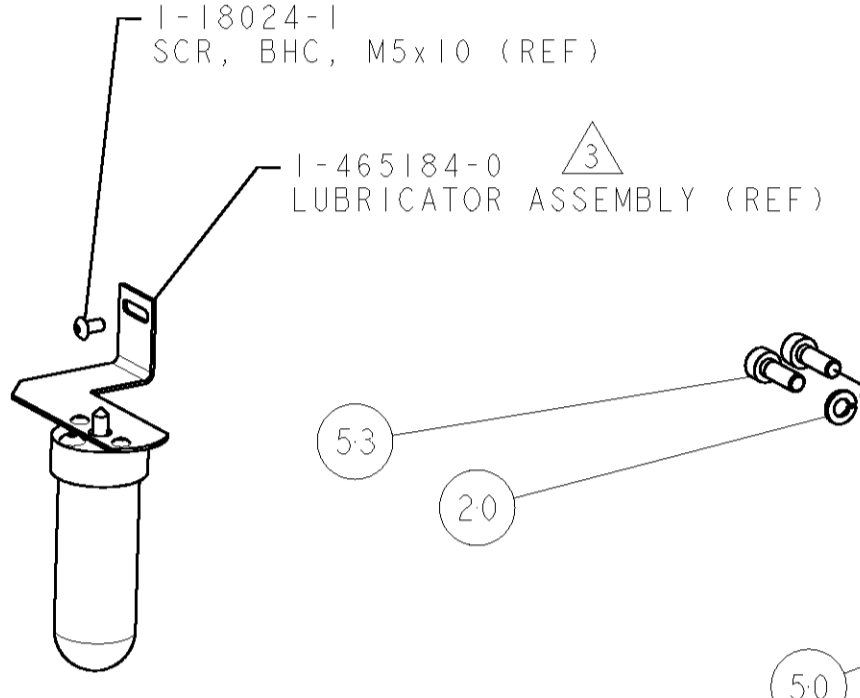
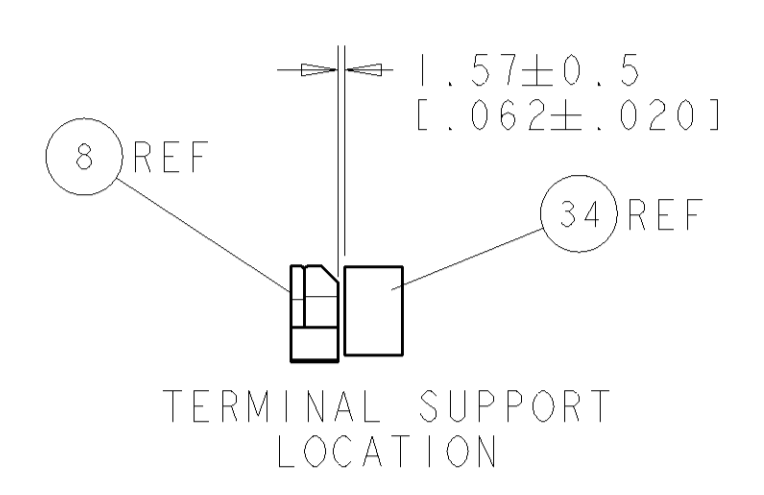
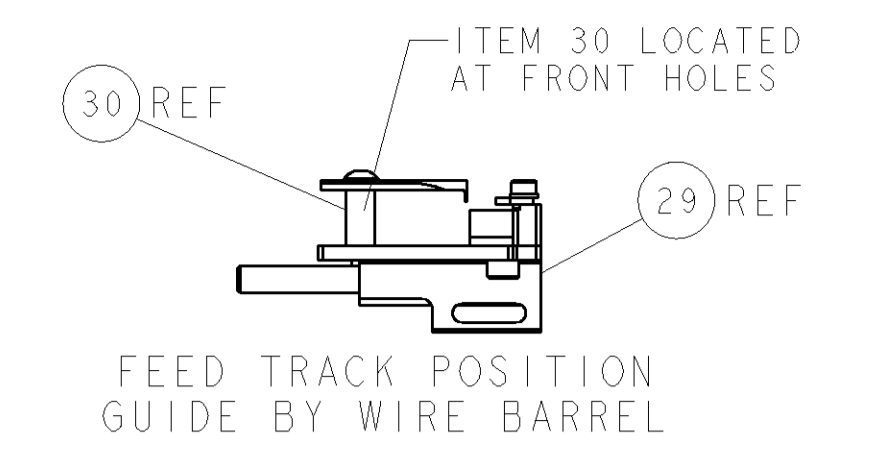
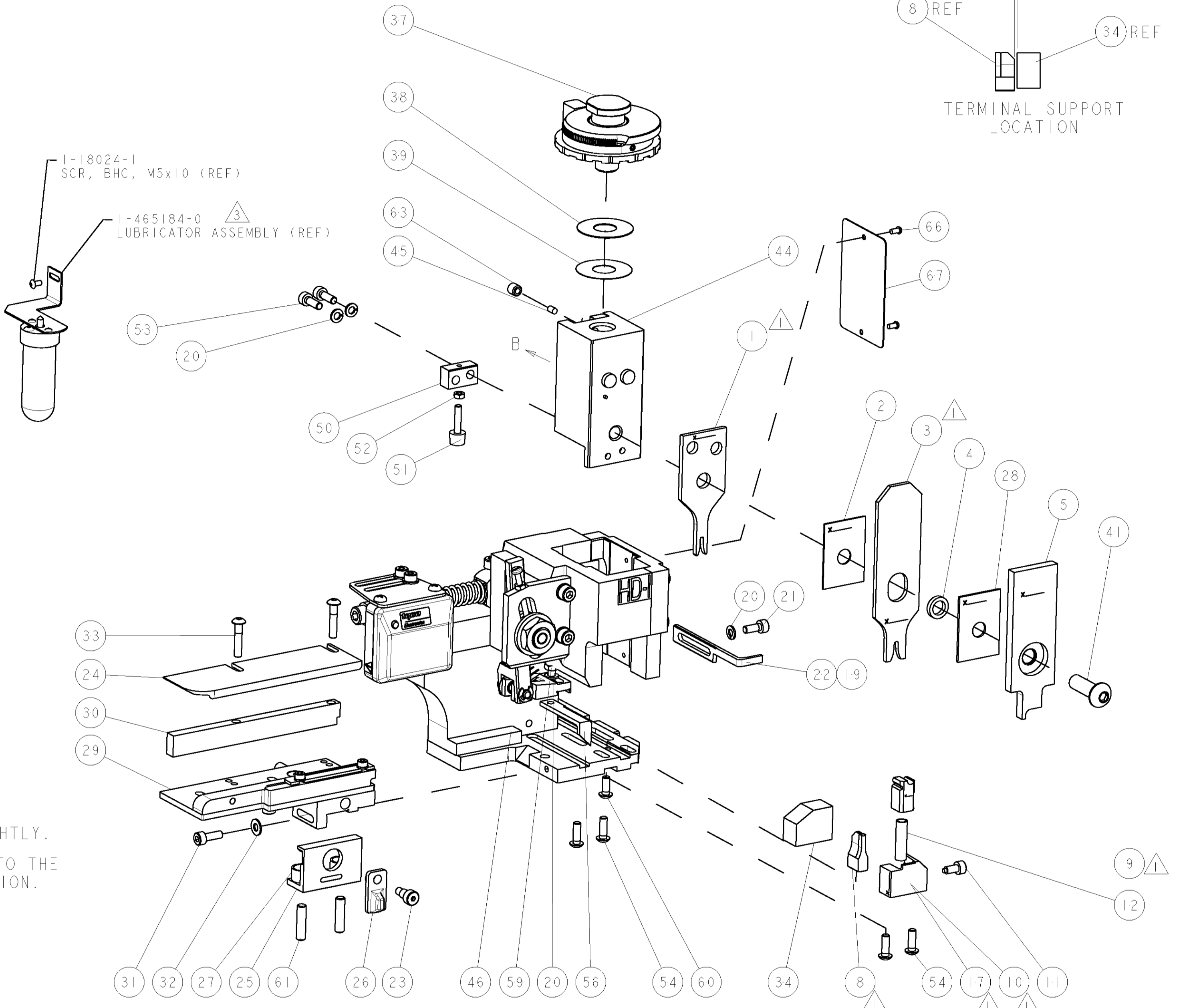


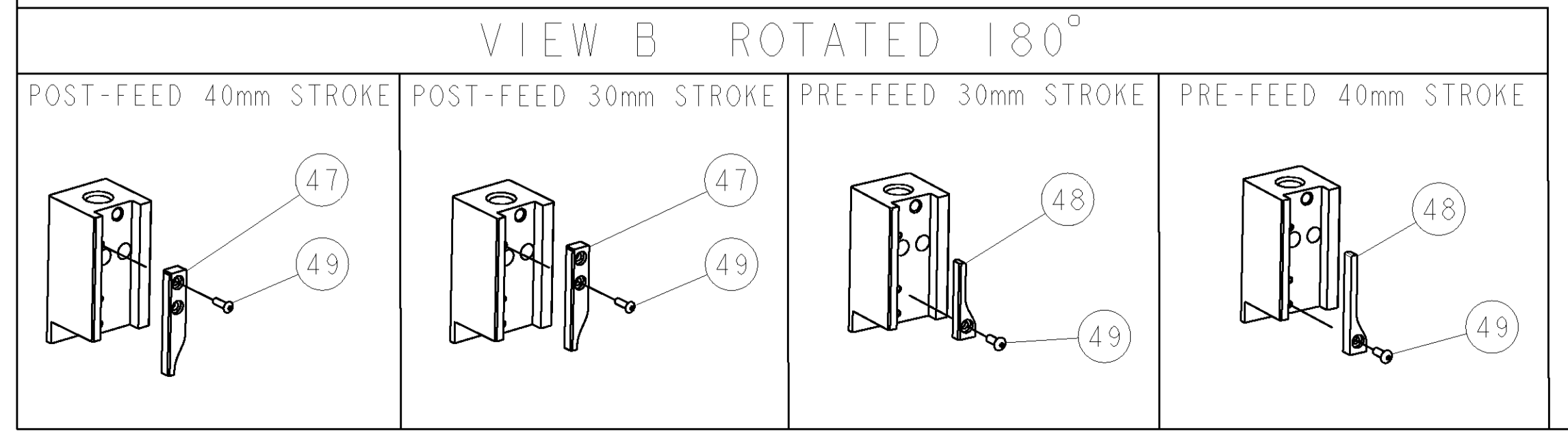
PART NUMBER	REV	TERMINATOR	FEED TYPE	DESCRIPTION
1530048-1	A	LEADMAKER	MECH POST FEED	CUTS CARRIER
1530048-2	A	BENCH	MECH PRE FEED	CUTS CARRIER
1530048-6	A	LEADMAKER	MECH POST FEED	CONTINUOUS CARRIER
7-1530048-1	A	LEADMAKER	MECH POST FEED	-1 AND SPARE PARTS
7-1530048-2	A	BENCH	MECH PRE FEED	-2 AND SPARE PARTS
7-1530048-6	A	LEADMAKER	MECH POST FEED	-6 AND SPARE PARTS
7-1530048-7	A	-	-	SPARE PARTS KIT

CRIMP DATA	TE TERMINAL	TE CRIMP SPECS
TERMINAL NAME: 1,8 MIC TAB		
CRIMP	SIZE	TYPE
WIRE	1.78 [1.070 IN]	F
INSUL	2.54 [1.100 IN]	OV
WIRE STRIP LENGTH 4.80mm		APPL INSTRUCTIONS 408-8322 & 408-8490
TERMINAL APPL SPEC	NONE	FEED 9.80 [1.386 IN]
TERMINALS APPLIED		
880694	-	-
-	-	-
-	-	-
-	-	-
-	-	-
WIRE SIZE	CRIMP HEIGHT	REF SETTING
1.00mm ²	1.47 ± 0.05 [1.058 ± .002 IN]	B1
0.75mm ²	1.37 ± 0.05 [1.054 ± .002 IN]	B8
0.50mm ²	1.27 ± 0.05 [1.050 ± .002 IN]	C5



- △ RECOMMENDED SPARE PARTS.
- 2. GREASE RAM, CAM, CAM FOLLOWER AND FEED ROD LIGHTLY.
- △ CERTAIN TERMINALS REQUIRE LUBRICATION. REFER TO THE APPLICATOR INSTRUCTION SHEET FOR MORE INFORMATION.
- 4. LUBRICATE DAILY PER THE APPLICATOR INSTRUCTION SHEET SUPPLIED WITH THE APPLICATOR.

* WARNING
ON INSTALLATION, SET WIRE DISC TO LARGEST WIRE SIZE SETTING. USE OF SETTINGS BELOW MIN. REQUIRED CRIMP HEIGHT SETTING WILL CAUSE DAMAGE TO CRIMP TOOLING.



SET UP GAGE
458637-3

REV	DATE	BY	CHK	APPV
1	17DEC2004	C.C.	N.D.	
A	19JAN2009	MEH	GB	

ITEM NO	DESCRIPTION	DATE	BY	CHK	APPV
73	-	-	-	-	-
72	-	-	-	-	-
71	DOCUMENTATION PACKAGE	1338705-3			
70	-	-	-	-	-
69	-	-	-	-	-
68	-	-	-	-	-
67	PLATE, IDENTIFICATION	461264-5			
66	SCREW, DRIVE	21017-2			
65	-	-	-	-	-
64	-	-	-	-	-
63	SCR, SET, CUP POINT M6 X 6.0	3-18031-0			
62	-	-	-	-	-
61	SCR, SET, FLT POINT M5 X 20.0	2-18032-5			
60	SCR, BTN SKT HD CAP (M4 X 10.0)	18024-7			
59	SCR, HEX HD CAP M4 X 8.0	5-18022-2			
58	-	-	-	-	-
57	-	-	-	-	-
56	PAWL, FEED	1338685-1			
55	-	-	-	-	-
54	SCR, BTN SKT HD CAP (M4 X 12.0)	18024-8			
53	SCR, SKT HD CAP M4 X 12.0	1-18023-2			
52	NUT, HEX, REG M3	18030-1			
51	BUMPER, HOLD DOWN	811242-5			
50	SPACER, TONKER	690753-2			
49	SCR, BTN SKT HD CAP (M3 X 10.0)	18024-3			
48	CAM, UNIVERSAL PRE FEED	1338675-1			
47	CAM, UNIVERSAL POST-FEED	1338676-1			
46	APPLICATOR SUBASSEMBLY, HDI	1320999-3			
45	PLUG, NYLON	690191-1			
44	RAM	1338660-1			
43	-	-	-	-	-
42	-	-	-	-	-
41	SCR, BTN SKT HD CAP (M8 X 25.0)	2-18024-6			
40	-	-	-	-	-
39	SHIM SUB-ASSY	690125-1			
38	SHIM	469367-9			
37	FINE ADJUST HEAD ASSEMBLY	879103-3			
36	-	-	-	-	-
35	-	-	-	-	-
34	SUPPORT, TERMINAL	1320934-3			
33	SCR, BTN SKT HD CAP (M4 X 20.0)	1-18024-0			
32	WASHER, FLAT, REG M4	18027-2			
31	SCR, SKT HD CAP M4 X 12.0	1-18023-2			
30	SPACER, STRIP GUIDE	1-1320908-5			
29	STRIP GUIDE ASSEMBLY	1633073-1			
28	SPACER, CRIMPER	1-455888-0			
27	SPRING, COMPRESSION	1-22284-0			
26	LEVER, DRAG RELEASE	356835-1			
25	DRAG, TERMINAL	240792-1			
24	PLATE, STRIP GUIDE	1320928-1			
23	SCR, SKT HD SHLDR 5.0 DIA X 6.0	980371-4			
22	STRIPPER	690472-2			
21	SCR, SKT HD CAP M4 X 10.0	1-18023-1			
20	WASHER, SPRG LOCK, REG M4	18025-2			
19	STRIPPER	690472-1			
18	-	-	-	-	-
17	SHEAR HOLDER, FRONT	1338684-1			
16	-	-	-	-	-
15	-	-	-	-	-
14	-	-	-	-	-
13	-	-	-	-	-
12	SPRING, COMPRESSION	3-22280-3			
11	STOP, SHEAR	356885-4			
10	SHEAR HOLDER, FRONT, CUT	1320921-1			
9	FLOATING SHEAR, FRONT	462006-1			
8	ANVIL, COMBINATION .070	3-1633130-6			
7	-	-	-	-	-
6	-	-	-	-	-
5	DEPRESSOR, SHEAR	2-455889-0			
4	BLOCK, CRIMPER SPACER	238011-4			
3	CRIMPER, INSULATION SPECIAL	1-854830-8			
2	SPACER, CRIMPER	455888-6			
1	CRIMPER, WIRE PREMIUM	3-456404-5			

77-76-72-71-6-2-1 PART NO DESCRIPTION ITEM NO

17DEC2004
G. CHEN
M. HERR
N. DEMING

22DEC2004
22DEC2004

TYCO ELECTRONICS
Tyco Electronics
Harrisburg, PA 17105-3608

FINE ADJUST SIDE FEED
HDI APPLICATOR

SIZE: A | CAGE CODE: 00779 | DRAWING NO: C=1530048 | SHEET 1 OF 1 | REV A