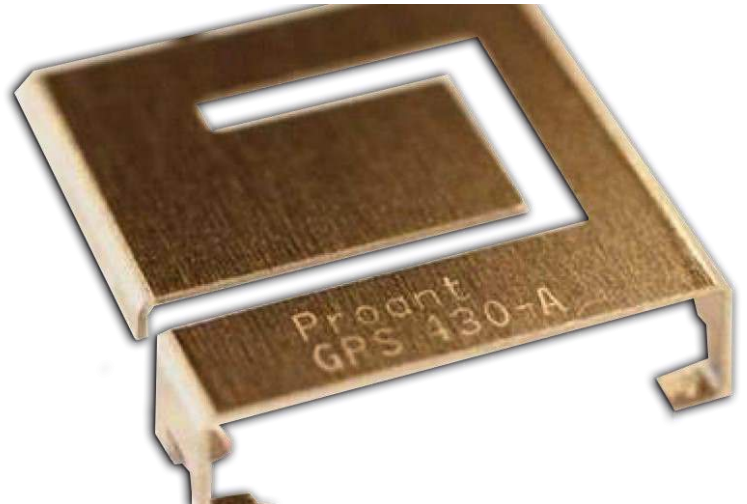




ONBOARD-GPS

Features

- High Performance SMD Antenna
- GPS L1 1576.42MHz
- GLONASS L1 1602MHz
- Total Efficiency > 65% (-1.9dB)
- Return Loss < -10dB
- Impedance 50 ohm
- Measures 12.5 x 12.4 x 3.3mm
- Supplied Tape and Reel
- -40 to +85°C



Applications

- WLAN, Bluetooth, Zigbee, RFID
- Space Saving Applications
- M2M Industrial

Description

A Proant ONBOARD miniature Antenna for GPS applications provides a high performance surface mounting Component Antenna.

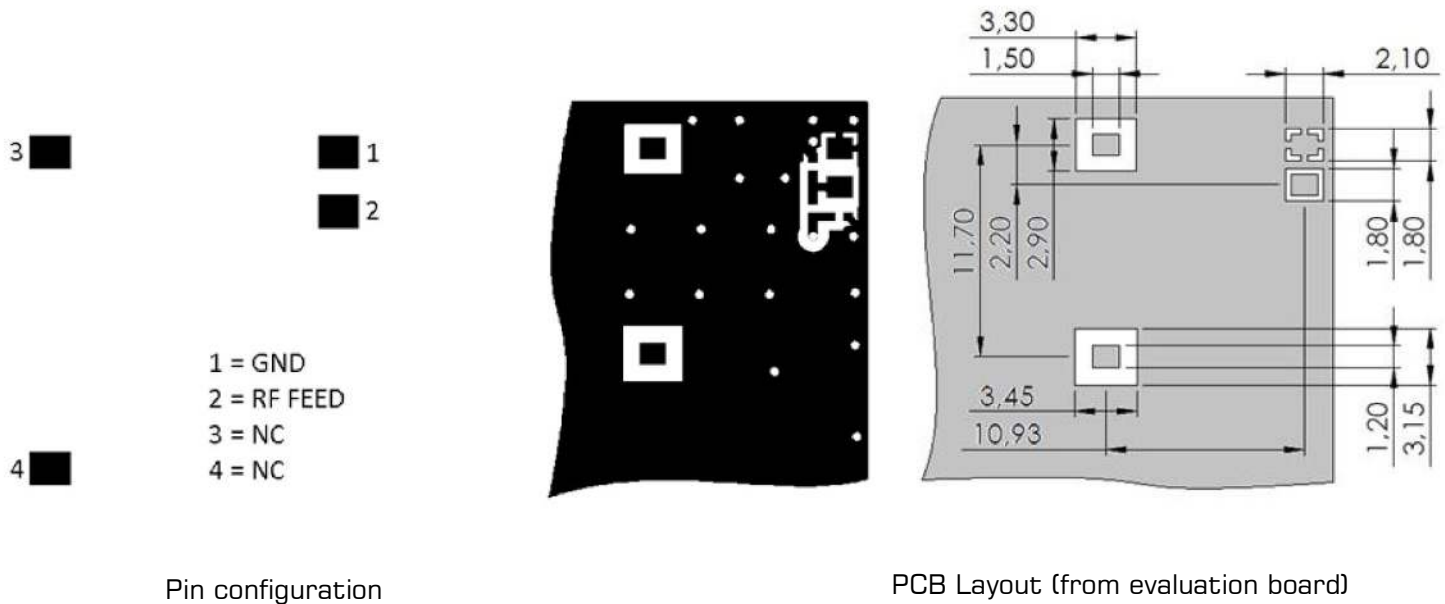
Integrated antenna are a trade off of different aspects of RF design. This antenna provides a significantly higher performance over many embedded antennas whilst having a marginally larger footprint.

Ordering Information

Part No	Description
ONBOARD-GPS	Mini antenna GPS
ONBOARD-GPSEVAL	Evaluation Board

Design Considerations

The antenna is developed for optimum performance when mounted on a ground plane. Therefore it is very suitable on a printed circuit board, where all empty space in the layout shall be filled solid Copper. This also means that no ground cutout area is required under the antenna. If there are several layers on the PCB, there is an advantage to add via holes for interconnection of the ground areas. It is also very important that there is a ground clearance around the NC pads, through all layers of the PCB. Otherwise there will be capacitive coupling which may detune the antenna.

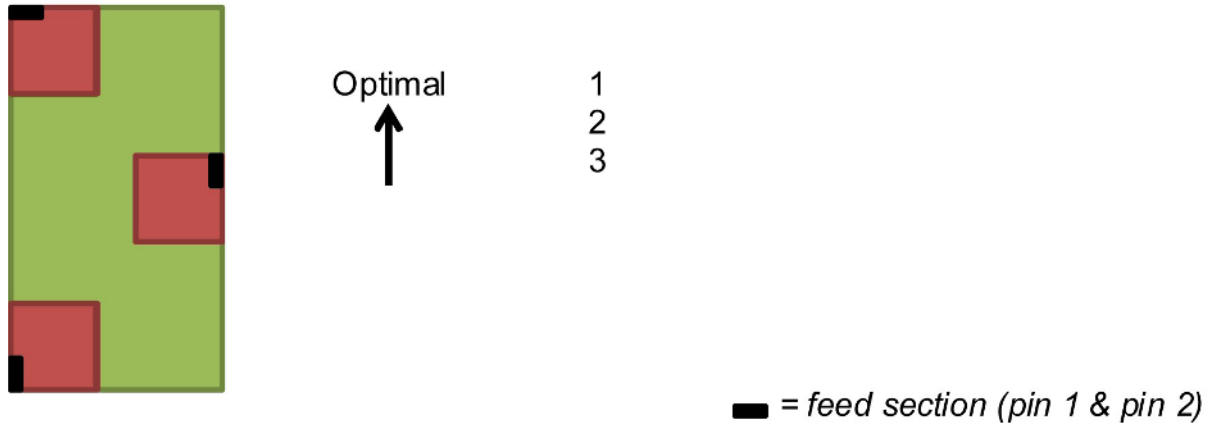


The antenna is preferably positioned along one side of the PCB ground plane, where pin 1 shall be as close as possible to the layout corner.

It is also recommended to implement a pi-matching network as seen in the PCB layout to compensate for eventual mismatch due to the practical implementation. The components can be positioned below the antenna next to the feed pad. See part 8 for more details.

PCB Layout

The antenna can be positioned in many ways, although there are some positions which are more beneficial. Below picture shows a typical PCB with six possible antenna positions. We have arranged the positions according to the general best fit.



The antenna should be aligned with the PCB edge if possible. It is also important to align pin 1 & 2 along the outer side of the PCB, and even more preferably close to a corner.

The OnBoard SMD GPS antenna enables that small electrical components are mounted inside the antenna keep-out block. This may have an impact on the antenna tuning and radiated performance, but is fully possible if there is limited space on the PCB.

Another general aspect on surface mounted antennas is regarding the PCB population. If other electrical components are positioned in the surrounding area of the antenna, some impact on the antenna tuning and radiated performance may be expected. It is recommended that such components are distributed below a topographical slope that starts on PCB level at the antenna keep-out block, and slowly increases the height. It shall also be highlighted that plastic and metal parts in the near proximity of antennas may influence the antenna tuning and/or impedance. This aspect should be noted as a general guideline for all antennas. The effects are difficult to estimate without detailed information, but it is recommended to measure the antenna in the actual device after implementation.

Impedance Matching

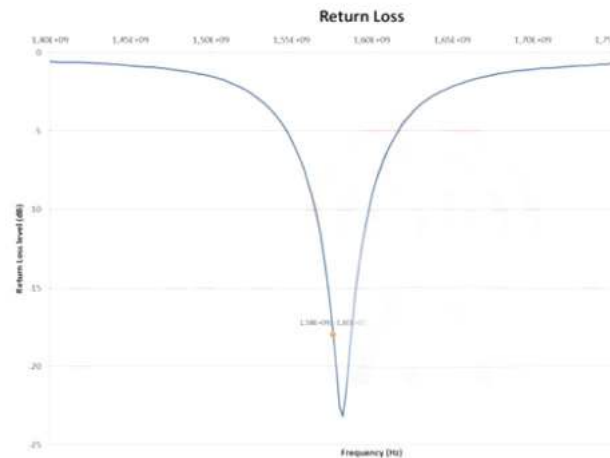
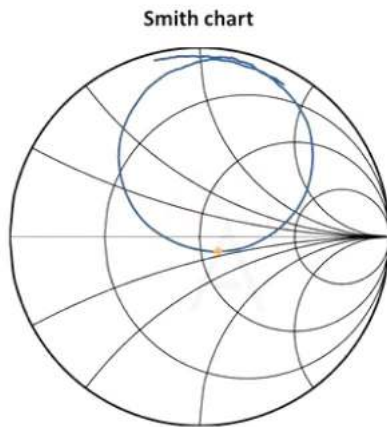
The antenna may be tuned for optimal operation at either the GPS or GLONASS frequency band. The user may like to elaborate with the tuning to compensate implementation effects. This part shows two examples of how to optimise the antenna for the GPS and GLONASS bands on the evaluation board.

GPS optimisation

C1 = 3.3 nH (Murata LQW15AN3N3D10)

C2 = 1.8pF (Murata GRM1555C1H1R8CZ01)

C3 = N/A

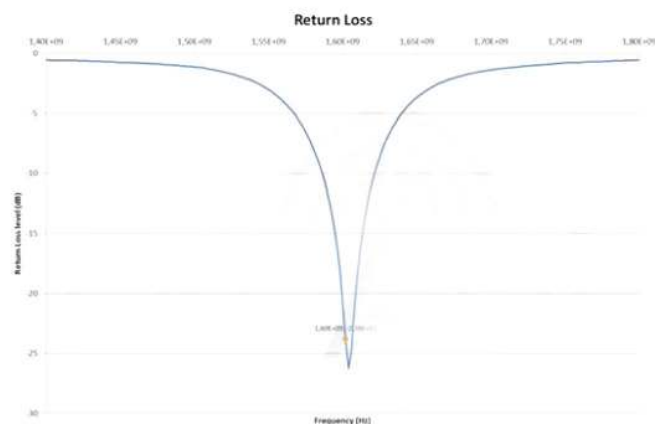
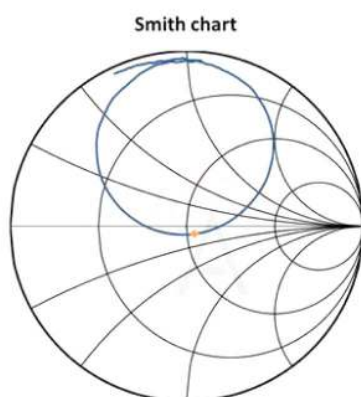


GLONASS optimisation

C1 = 2.4 nH (Murata LQW15AN2N4D10)

C2 = 1.5pF (Murata GRM1555C1H1R5CZ01)

C3 = N/A



Evaluation Board

The evaluation board is developed to simplify antenna testing and evaluation. It has an arbitrary size of 100 x 50mm and includes an SMA connector. The purpose is to give a reference design for an optimal antenna implementation. The evaluation board can also be used to test other implementations by cutting and soldering the PCB into any device.

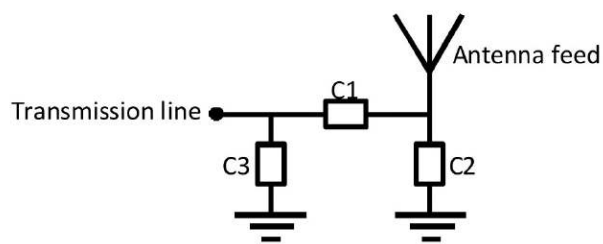


Evaluation board outline



Actual Board

The evaluation board has a matching circuit implemented next to the antenna. This is aimed to enable optimisation possibilities for the user. The component positions have the size for SMD components 0402 (1005 metric).



Matching circuit

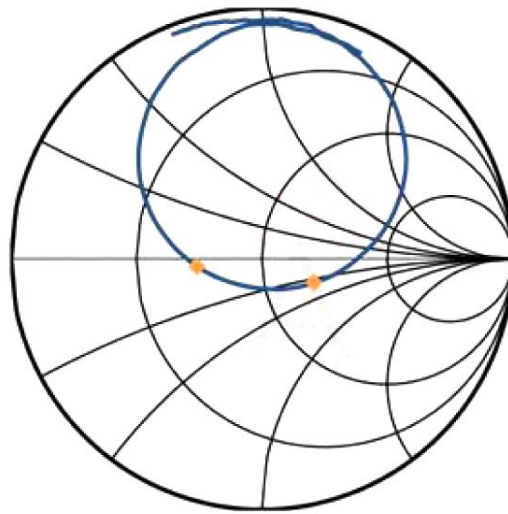


The antenna is originally tuned for optimum balance at the 2.4GHz band, but it is common that the resonate frequency will shift during implementation in an arbitrary device. Therefore this matching circuit makes it possible to compensate for such effects. This is further described in part 9.

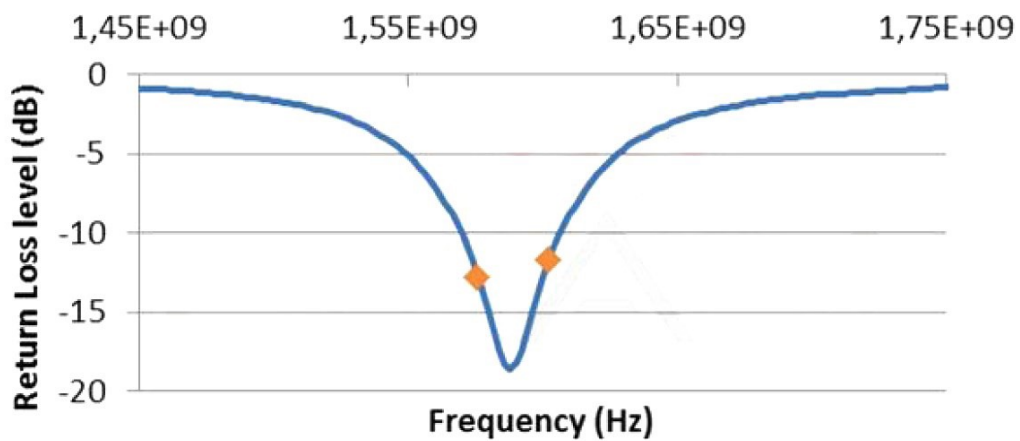
When delivered, $C1 = 1.5\text{nH}$, $C2 = 0.5\text{pF}$, $C3 = \text{N/A}$. This is for compensation of transmission line effects in the evaluation board.

Performance Data

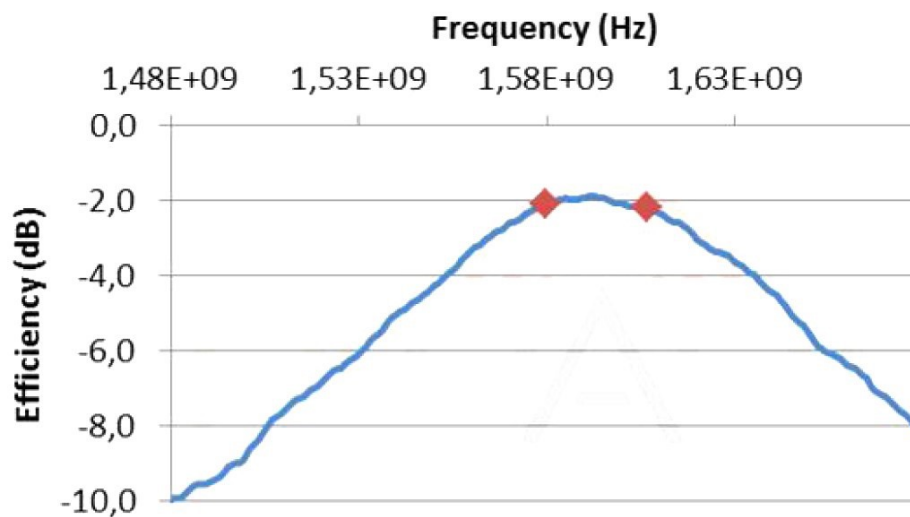
Smith Chart



Return Loss

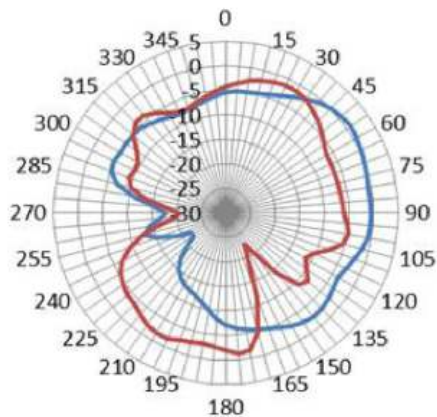


Total Efficiency

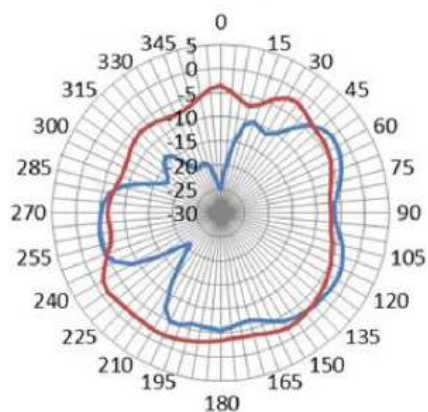


Radiation Pattern

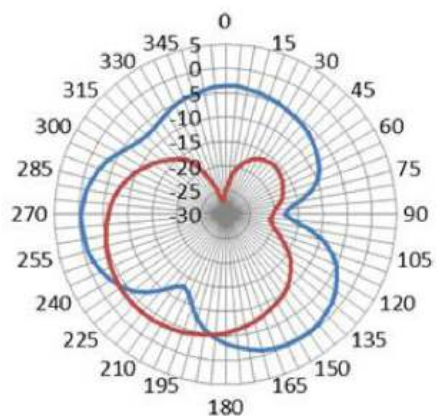
H Plane



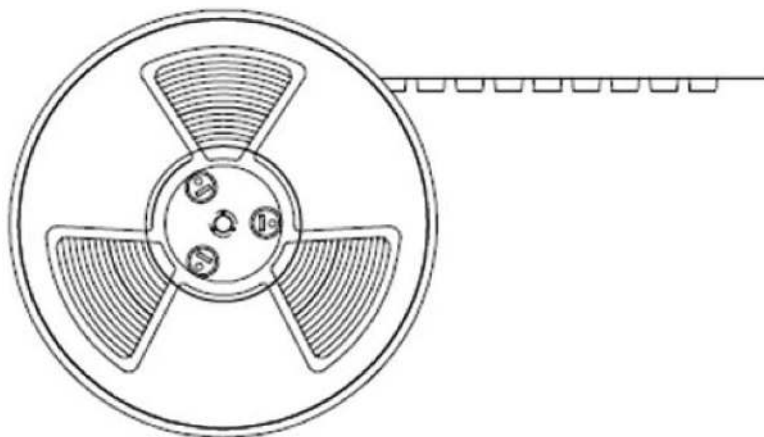
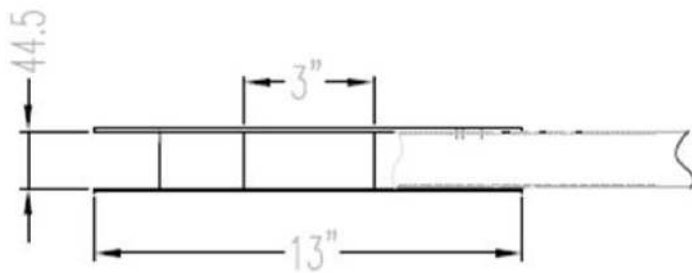
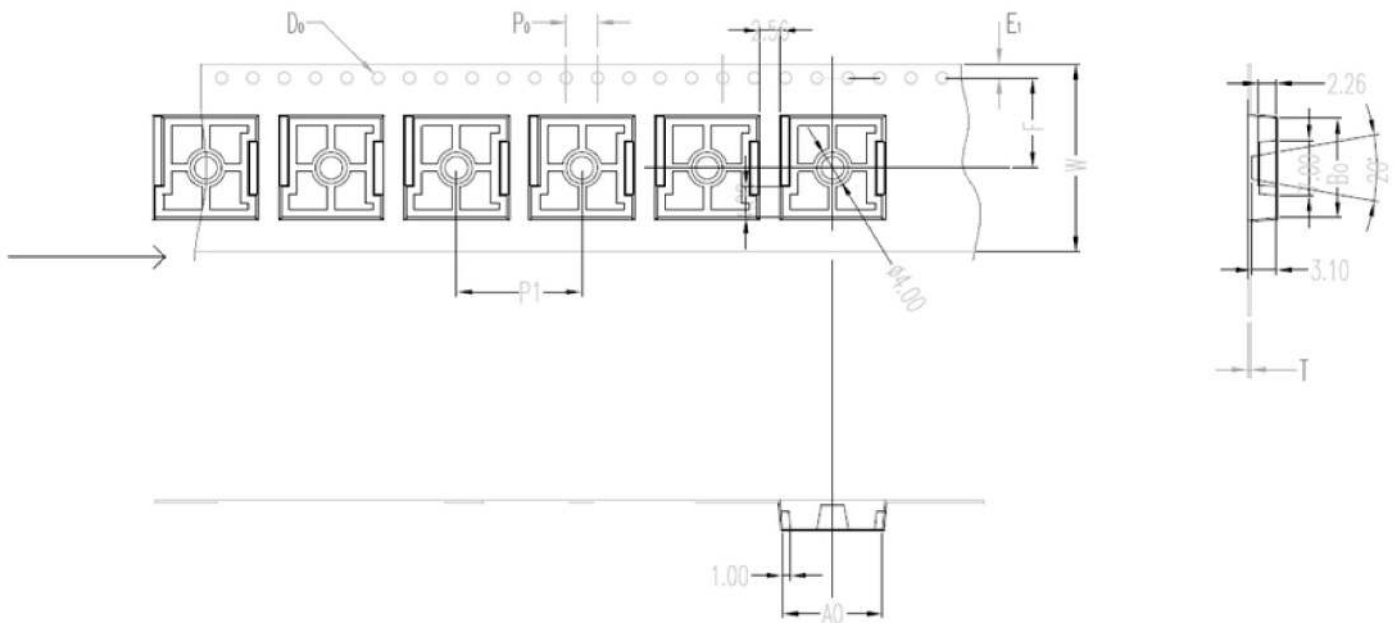
VO Plane



V90 Plane

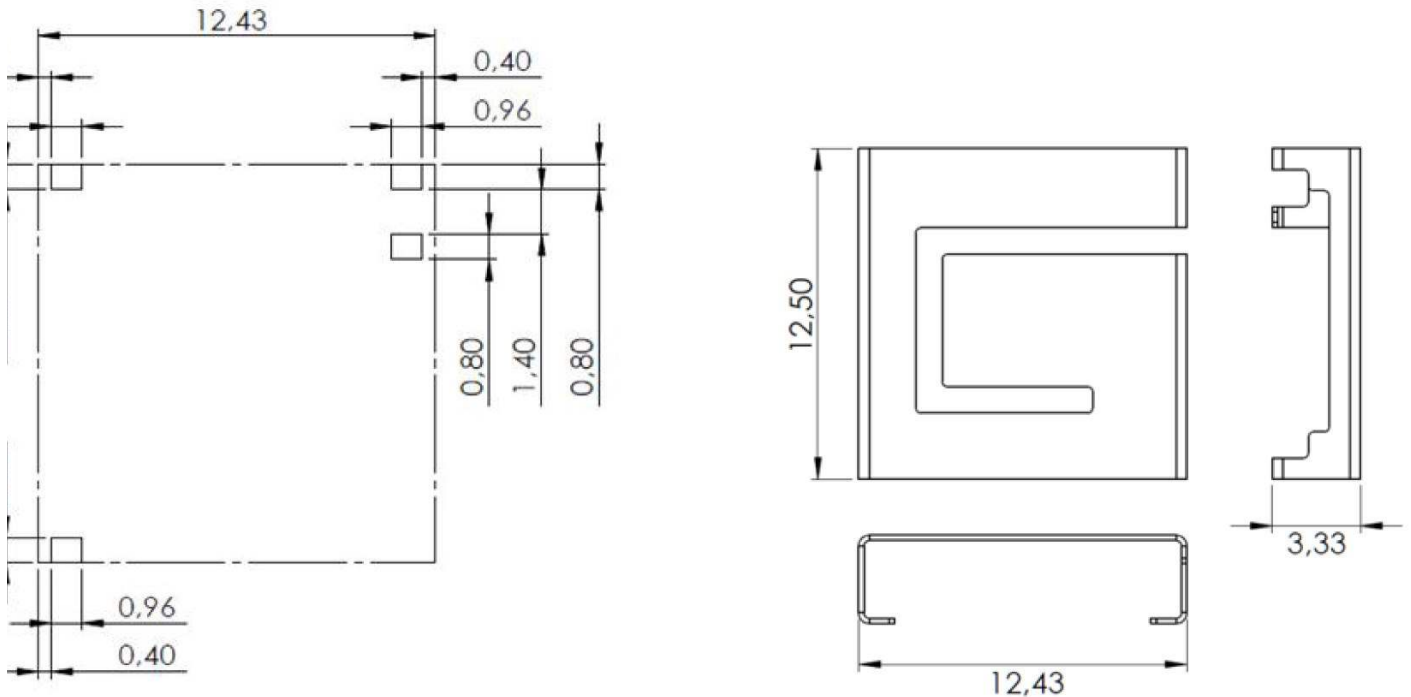


Tape and Reel Packaging Data



A_0	12.80 ± 0.1
B_0	12.75 ± 0.1
D_0	$\phi 1.5 \begin{smallmatrix} +0.10 \\ -0.00 \end{smallmatrix}$
E_1	1.75 ± 0.1
F	11.5 ± 0.15
K_0	3.65 ± 0.1
P_0	4.0 ± 0.1
P_1	16. ± 0.1
P_2	2.0 ± 0.15
S_0	
T	0.35 ± 0.05
W	24.0 ± 0.3

Mechanical Data



The sketch shows the antenna footprint and keep-out block. Above dimensions are given in millimetre.

RF Solutions Ltd. Recycling Notice
Meets the following EC Directives:



DO NOT
Discard with normal waste, please recycle.

ROHS Directive 2011/65/EU and amendment 2015/863/EU
Specifies certain limits for hazardous substances.

WEEE Directive 2012/19/EU

Waste electrical & electronic equipment. This product must be disposed of through a licensed WEEE collection point. RF Solutions Ltd., fulfills its WEEE obligations by membership of an approved compliance scheme. Environment Agency producer registration number: **WEE/JBO104WV**.

Waste Batteries and Accumulators Directive 2006/66/EC

Where batteries are fitted, before recycling the product, the batteries must be removed and disposed of at a licensed collection point.

Disclaimer:

Whilst the information in this document is believed to be correct at the time of issue, RF Solutions Ltd does not accept any liability whatsoever for its accuracy, adequacy or completeness. No express or implied warranty or representation is given relating to the information contained in this document. RF Solutions Ltd reserves the right to make changes and improvements to the product(s) described herein without notice. Buyers and other users should determine for themselves the suitability of any such information or products for their own particular requirements or specification(s). RF Solutions Ltd shall not be liable for any loss or damage caused as a result of user's own determination of how to deploy or use RF Solutions Ltd's products. Use of RF Solutions Ltd products or components in life support and/or safety applications is not authorised except with express written approval. No licences are created, implicitly or otherwise, under any of RF Solutions Ltd's intellectual property rights. Liability for loss or damage resulting or caused by reliance on the information contained herein or from the use of the product (including liability resulting from negligence or where RF Solutions Ltd was aware of the possibility of such loss or damage arising) is excluded. This will not operate to limit or restrict RF Solutions Ltd's liability for death or personal injury resulting from its negligence.