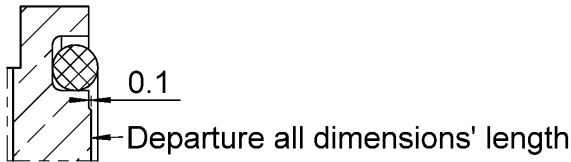
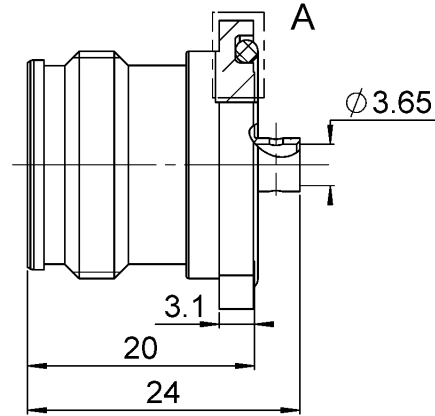
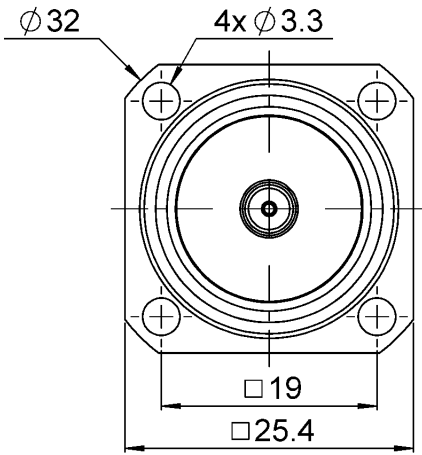
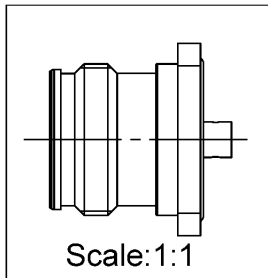


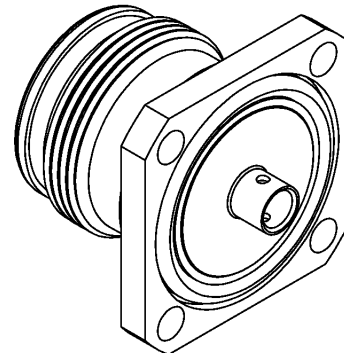
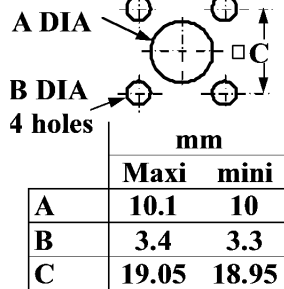
PAGE 1/3	ISSUE 10-03-16B	SERIES 4.3-10	PART NUMBER R183252007
----------	-----------------	---------------	-------------------------------



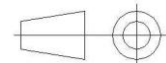
DETAIL A
SCALE 3 : 1



PANEL CUT OUT



All dimensions are in mm.



COMPONENTS	MATERIALS	PLATING (µm)
Body	BRASS	BBR
Center contact	BRONZE	SILVER
Outer contact	BRONZE	SILVER
Insulator	PTFE	
Gasket	SILICONE RUBBER	
Others parts		
-	-	-
-	-	-

PAGE 2/3	ISSUE 10-03-16B	SERIES 4.3-10	PART NUMBER R183252007
----------	-----------------	---------------	------------------------

PACKAGING

Standard	Unit	Other
50	Contact us	Contact us

ELECTRICAL CHARACTERISTICS

Impedance	50	Ω
Frequency	0-6	GHz
VSWR	1.02 + 0.0100	x F(GHz) Maxi
Insertion loss	0.05	√F(GHz) dB Maxi
RF leakage	-(NA	- F(GHz)) dB Maxi
Voltage rating	500	Veff Maxi
Dielectric withstanding voltage	1500	Veff mini
Insulation resistance	5000	MΩ mini

MECHANICAL CHARACTERISTICS

Center contact retention		
Axial force – Mating End	30	N mini
Axial force – Opposite end	30	N mini
Torque	NA	N.cm mini
Recommended torque		
Mating	NA	N.cm
Panel nut	NA	N.cm
Clamp nut	NA	N.cm
A/F clamp nut	0.0000	mm
Mating life	100	Cycles mini
Weight	35.4430	g

ENVIRONMENTAL

Operating temperature	-55~+90	°C
Hermetic seal	NA	Atm.cm3/s
Panel leakage	IP67	

SPECIFICATION

CABLE ASSEMBLY

Stripping	a	b	c	d	e	f
mm	2.17	0	0	0	0	0

Assembly instruction: **NA**

Recommended cable(s)

BELDEN 1673A
Flexiform 402 MB

Characteristics indicated on this data sheet are those that can be achieved with the highest performance cable. Intrinsic limitations of the cable may diminish the performance of the assembly

Cable retention

- pull off	200	N mini
- torque	NA	N.cm

TOOLING

Part Number	Description	Hexagon
R282053000	STRIPPING TOOL	
R282066000	POINTER GAUGE	
R282740000	SOLDERING MOUNTING	

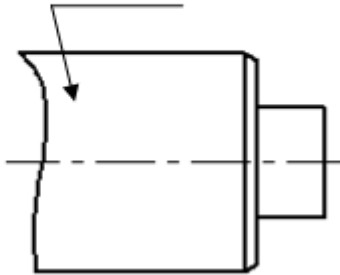
OTHER CHARACTERISTICS

PIM3<=-123 dBm, 2 carriers of +43dBm

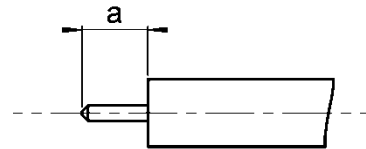
PAGE 3/3	ISSUE 10-03-16B	SERIES 4.3-10	PART NUMBER R183252007
----------	-----------------	---------------	-------------------------------

COMPONENTS

BODY

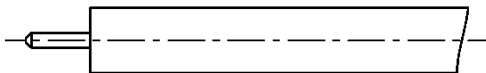


STRIPPING DIMENSION



1

- Strip the cable with the cable stripping tool.
- Trim the cable inner conductor with the trimmer.
- Clean the cable



2

- Introduce the cable into the body until contact with the body shoulder.
- Place the sub-assembly on assembly jig
- Solder body on the cable.
- Let assembly cool down before removing it from the jig.

