

# Customer Information Sheet

DRAWING No.: M80-858XXXX

SHEET 2 OF 2

IF IN DOUBT - ASK

©

NOT TO SCALE

THIRD ANGLE PROJECTION

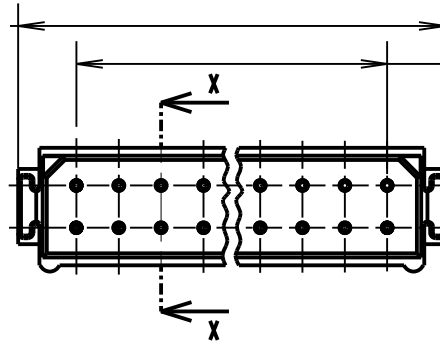
ALL DIMENSIONS IN mm

BRITISH STANDARD ORDER CODE:  
**B5743-2XX-M-T-V**

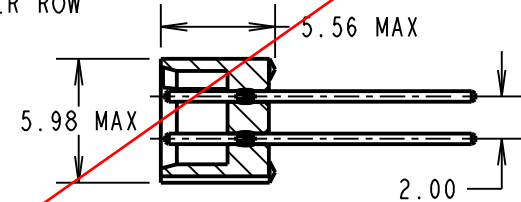
TOTAL No. OF WAYS \_\_\_\_\_  
04, 06, 08, 10, 12, 14,  
16, 18, 20, 26, 34, 44

FINISH: \_\_\_\_\_  
V - SELECTIVE GOLD

2.00 x No. OF WAYS  
PER ROW + 3.55 MAX



2.00 x No. OF  
PITCHES PER ROW



SECTION X-X

**OBSOLETE**

NOTES:

- 2-OFF STRAIN RELIEF STRAPS  
M80-0030006 CAN BE ORDERED  
SEPERATELY IF REQUIRED

ORDER CODE: **M80-858XXXX**

TOTAL No. OF WAYS \_\_\_\_\_  
04, 06, 08, 10, 12, 14,  
16, 18, 20, 26, 34, 44

FINISH: \_\_\_\_\_  
05 - GOLD  
22 - SELECTIVE GOLD + TIN/LEAD

**SPECIFICATIONS:**

**MATERIAL:**  
MOULDING = GLASS-FILLED POLYESTER UL94V-0  
CONTACTS = PHOSPHOR BRONZE

**FINISH:**  
CONTACTS:  
05 = 0.75µ GOLD  
22 = 0.75µ GOLD ON CONTACT AREA  
3.0µ 90/10 TIN/LEAD ON TAILS

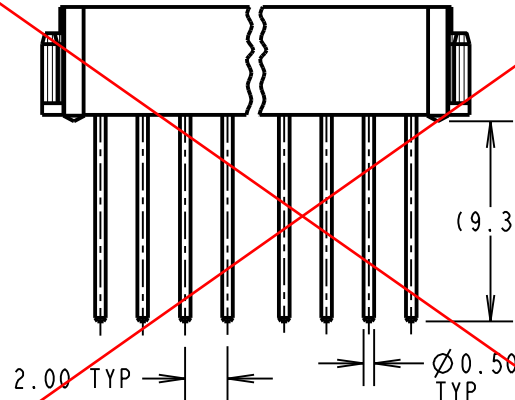
**ELECTRICAL:**  
CURRENT RATING AT 25°C = 3.0A MAX.  
CURRENT RATING AT 85°C = 2.2A MAX.  
WORKING VOLTAGE = 120V AC/DC  
VOLTAGE PROOF = 360V AC/DC  
CONTACT RESISTANCE (INITIAL) = 20 mΩ MAX.  
CONTACT RESISTANCE (AFTER CONDITIONING) = 25 mΩ MAX.  
INSULATION RESISTANCE (INITIAL) = 1000 MΩ MIN.  
INSULATION RESISTANCE (AFTER CONDITIONING) = 100mΩ MIN

**MECHANICAL:**  
DURABILITY = 500 OPERATIONS

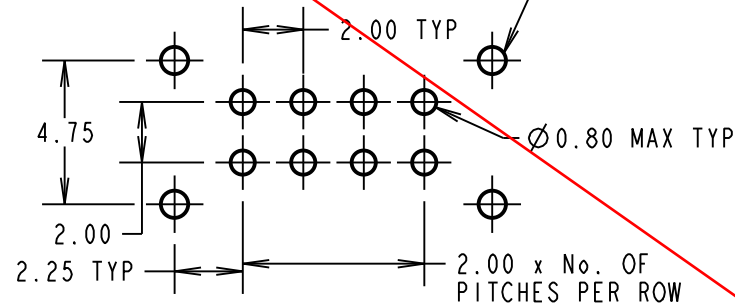
**ENVIRONMENTAL:**  
TEMPERATURE RANGE = -55°C TO +125°C

**PACKING:**  
TUBE

FOR COMPLETE SPECIFICATION SEE COMPONENT  
SPECIFICATION C005XX (LATEST ISSUE)



Ø 0.90 MIN TYP.  
STRAIN RELIEF  
STRAP HOLES (OPTIONAL)



RECOMMENDED  
PCB LAYOUT

SM	8	15.06.11	10832
NAME	ISS.	DATE	C/NOTE
APPROVED: S. MCCULLAGH			
CHECKED: M. G. PLESTED			
DRAWN: M. A. TODD			
CUSTOMER REF.:			
ASSEMBLY DRG:			

**HARWIN**

HARWIN USA TEL: 603 893 5376 FAX: 603 893 5396 mis@harwin.com	HARWIN Europe (UK) TEL: 023 9231 4545 FAX: 023 9231 4590 mis@harwin.co.uk	HARWIN Asia TEL: +65 6 779 4909 FAX: +65 6 779 3868 mis@harwin.com.sg
------------------------------------------------------------------------	------------------------------------------------------------------------------------	--------------------------------------------------------------------------------

THIS DRAWING AND ANY  
INFORMATION OR DESCRIPTIVE  
MATTER SET OUT HEREON ARE  
CONFIDENTIAL AND COPYRIGHT  
PROPERTY OF THE HARWIN  
GROUP AND MUST NOT BE  
DISCLOSED, LOANED, COPIED  
OR USED FOR MANUFACTURING,  
TENDERING OR FOR ANY  
OTHER PURPOSE WITHOUT  
THEIR WRITTEN PERMISSION.

**TOLERANCES**  
X. = ±1mm  
X.X = ±0.25mm  
X.XX = ±0.10mm  
X.XXX = ±0.01mm

ANGLES = ±5°  
UNLESS STATED

**MATERIAL:**  
SEE ABOVE

**FINISH:** SEE ABOVE

**S/AREA:** mm<sup>2</sup>

**TITLE:** DATAMATE DIL  
VERTICAL PC TAIL PLUG  
ASSEMBLY - LATCHED

**DRAWING NUMBER:**  
**M80-858XXXX**

SHT  
2 OF 2