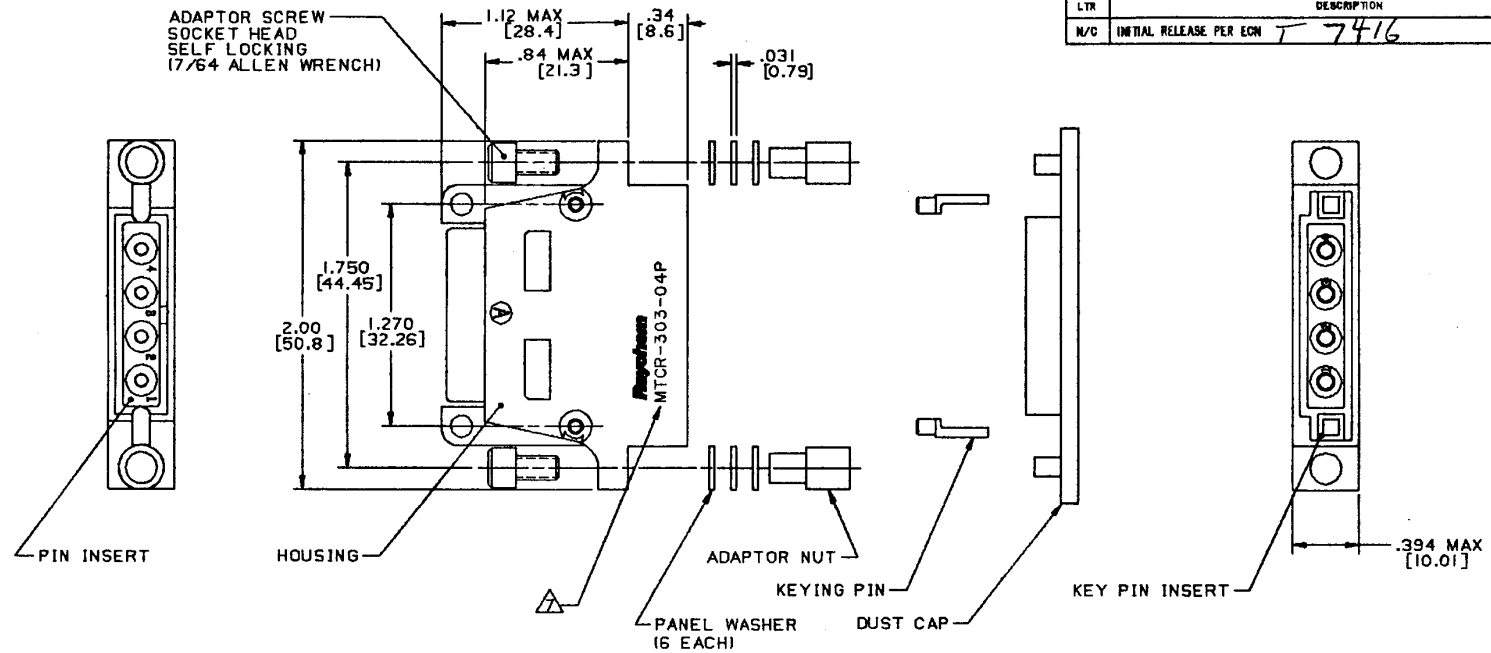


REVISIONS			
LTR	DESCRIPTION	DATE	APPROVED
N/C	INITIAL RELEASE PER ECM T 7416	12-3-86	J



NOTES:

- THIS PART IS DESIGNED TO MEET THE REQUIREMENTS OF RAYCHEM SPECIFICATION C-6115. QUALIFICATION IS PENDING.
- MATERIAL: MATERIALS ARE IN ACCORDANCE WITH RAYCHEM SPECIFICATION C-6115.
- FINISH: FINISHES ARE IN ACCORDANCE WITH RAYCHEM SPECIFICATION C-6115.
- FOR MOUNTING / MATING AND KEYING INFORMATION, SEE RAYCHEM DRAWING D652-0012
- THE FOLLOWING MOUNTING AND MATING HARDWARE IS SUPPLIED NOT INSTALLED WITH EACH RECEPTACLE:
  - A) (2) KEYING PINS
  - B) (2) ADAPTOR SCREWS
  - C) (2) ADAPTOR NUTS
  - D) (6) PANEL WASHERS
- DUST CAP SUPPLIED INSTALLED WITH EACH RECEPTACLE
- RAYCHEM, PART NO. MTCR-303-04P, AND DATE CODE ARE STAMPED APPROXIMATELY AS SHOWN.
- CONNECTOR ACCOMODATES CONTACTS PER TABLE 1.
- INSERT IS PERMANENTLY INSTALLED.
- CONTACTS ARE INSERTED AND REMOVED USING TOOL NUMBER M81969/14-04.
- UNUSED CAVITIES ARE TO BE SEALED USING SEALING PLUG NUMBER M527488-12.
- TOLERANCES: UNLESS OTHERWISE SPECIFIED
  - .XXX ± .005 [ $\pm .13$ ]
  - .XX ± .02 [ $\pm .5$ ]

13 WEIGHT: .054 lbs [24.49 g]

PIN CONTACT AND TOOLING INFORMATION

CONTACT TYPE	MILITARY PART NO.	WIRE STRIP LENGTH	TERMINATION TOOL
SHIELDED CONTACT FOR CDAX CABLE D-602-0106 OR D-602-0094		SEE DRAWING D-602-0106 OR D-602-0094	SEE DRAWING D-602-0106 OR D-602-0094
CONTACT FOR TWISTED PAIR D-602-0104		SEE DRAWING D-602-0104	SEE DRAWING D-602-0104
POWER CONTACT SIZE 12	M39029/5-12-12	1/4" TO 5/16"	M22520/1-01 POSITIONER M22520/1-02

SPECIFICATION CONTROL DRAWING © Raychem Corporation 1985

DRAWN	D.J.K	11-21-86	 RAYCHEM CORPORATION 300 CONSTITUTION DRIVE MENLO PARK, CALIFORNIA 94025
CHECKED	J3		
APPROVED	Plain	11-25-86	
APPROVED	Lawler	12-4-86	
UNLESS OTHERWISE SPECIFIED DIMENSIONS ARE IN INCHES. METRIC DIMENSIONS ARE IN PARENTHESIS			CONNECTOR, RECEPTACLE, FLANGELESS, 1" CADMIUM PLATED, FIXED PIN INSERT EME CLASS, MTC SERIES
DO NOT SCALE THIS DRAWING			SIZE C CODE IDENT. NO. 06090 DWS NO. MTCR-303-04P
			WEIGHT 13 SHEET 1 OF 1