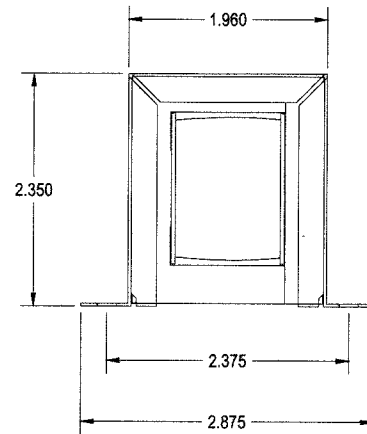
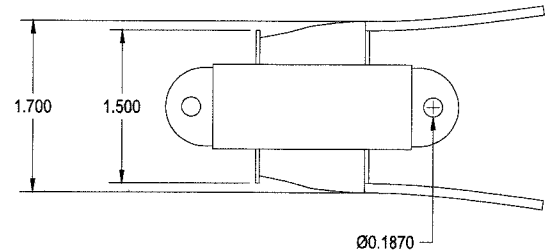


124E

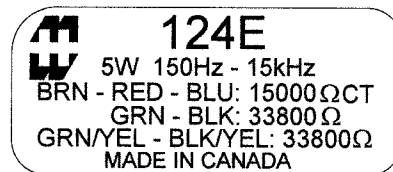
TUBE DRIVER - INTERSTAGE TRANSFORMER

This transformer operates in the 150 Hz to 15 KHz range.
 Designed for general purpose or replacement use in single ended
 or phase inverter tube driver circuits
 Open style, 2 point mount with minimum 5" long leads
 Core material Grain Oriented Silicone Steel laminations

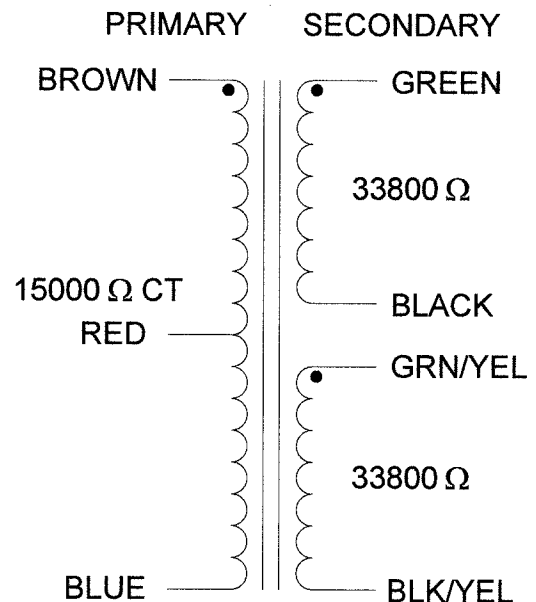


ELECTRICAL SPECIFICATIONS

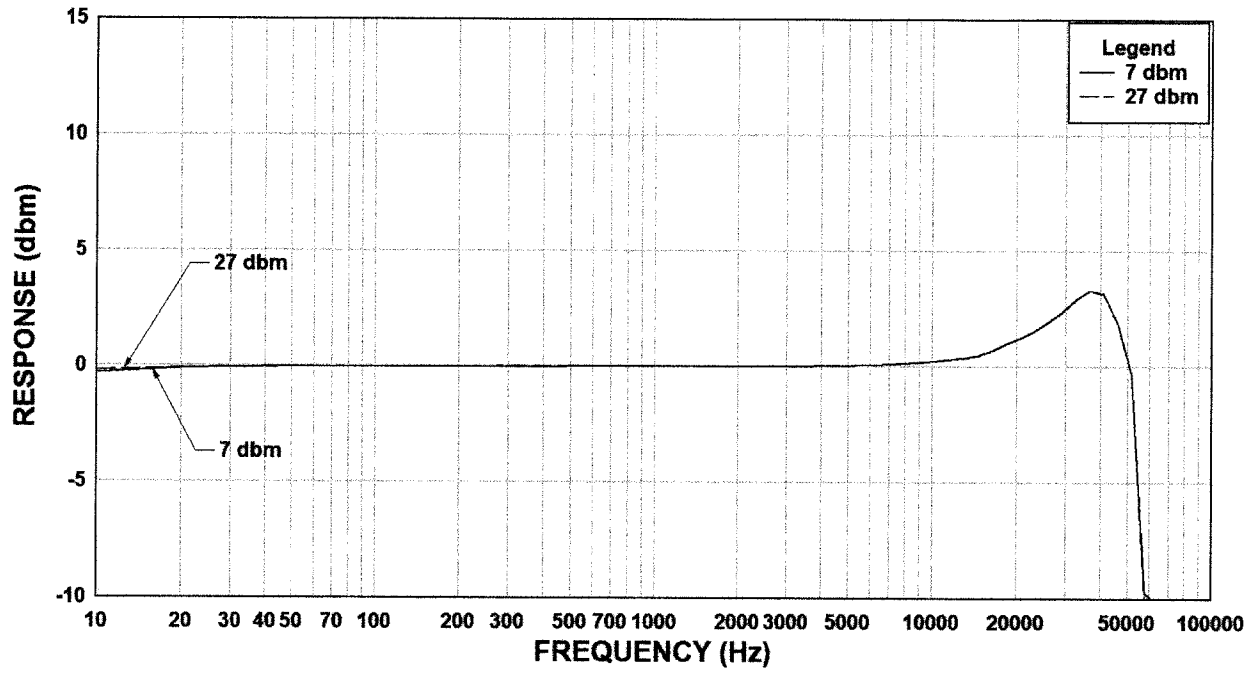
Characteristic	Typical
Input Impedance	15,000 Ω
Output Impedance	33,800 Ω (Parallel) 135,000 Ω CT (Series)
Output Power	5.0 Watts
DCR	
Primary	
BLU – RED	373 Ω
RED – BRN	355 Ω
Secondary	
GRN – BLK	1630 Ω
BLK – GRN	2250 Ω
Inductance	@ 1.0 kHz, 1.0 V OC
Primary	15.9 H
Secondary GRN-BLK	32.0 H
GRN/YEL-BLK/YEL	32.0 H
Leakage Inductance	0.18 H
Impedance	@ 1.0 kHz, 1.0 V OC
Primary	100 K Ω
Secondary GRN-BLK	200 K Ω
GRN/YEL-BLK/YEL	200 K Ω
Frequency Response	± 1 db from 150Hz to 15Hz
Turns ratio	1:2.97 1:5.94
Dielectric Strength	500 Vrms



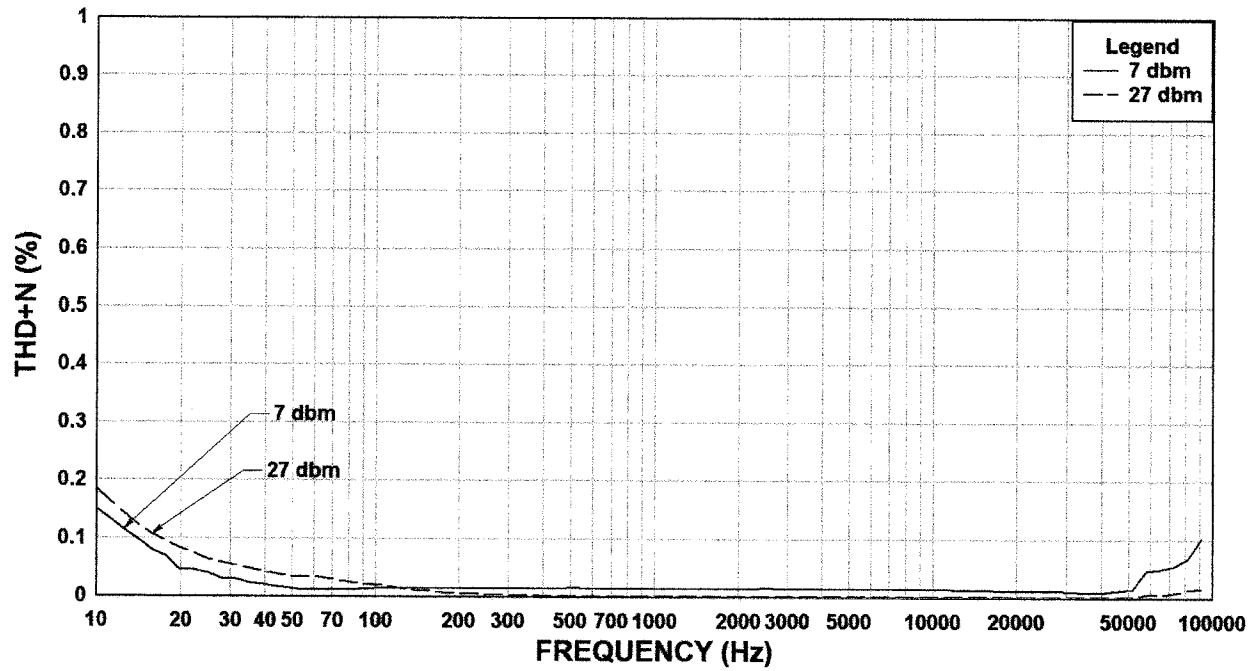
SCHEMATIC DIAGRAM



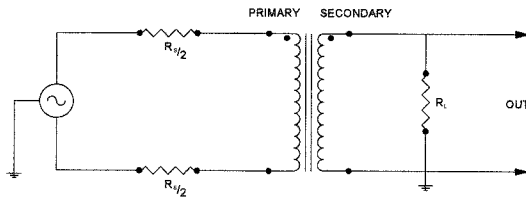
124E Rs=15K, RI=135K Frequency Response



124E Rs=15K, RI=135K THD+N



TYPICAL TEST CIRCUIT



Measurement instruments
 Hp4192a impedance analyzer
 Hp3456a DVM
 Keithley 2002 DVM
 D scope series iii audio analyzer

This drawing and the information in it is the property of Hammond Manufacturing. It may not be reproduced, transmitted or used in any manner whatsoever without the written permission of Hammond Manufacturing. Data subject to change without notice.