



Undervoltage release 208 V AC, 60 Hz with screw terminal for circuit breaker 3RV2

General technical data	
product brand name	SIRIUS
product designation	undervoltage release
size of the circuit-breaker	S00, S0, S2, S3
suitability for use	motor circuit breaker
protection class IP on the front acc. to IEC 60529	IP20
touch protection on the front acc. to IEC 60529	finger-safe, for vertical contact from the front
design of short-circuit protection	fuse
degree of pollution	3
insulation voltage rated value	690 V
insulation voltage with degree of pollution 3 at AC rated value	690 V
ambient temperature	
• during storage	-50 ... +80 °C
• during operation	-20 ... +60 °C
reference code acc. to DIN EN 61346-2	F
Auxiliary circuit	
number of NC contacts for auxiliary contacts instantaneous contact	0
number of NO contacts for auxiliary contacts instantaneous contact	0
number of NO contacts for auxiliary contacts leading contact	0
number of CO contacts of auxiliary contacts instantaneous contact	0
Control circuit/ Control	
type of voltage of the control supply voltage	AC
control supply voltage frequency	
• 1	
— final rated value	60 Hz
control supply voltage	
• 1	
— at AC	
— at 60 Hz rated value	208 V
Installation/ mounting/ dimensions	
fastening method	snap-on mounting
width	18.5 mm
height	90 mm
depth	68 mm

Certificates/ approvals

certificate of suitability

CE / UL / CSA

General Product Approval

Declaration of Conformity

Test Certificates



[Miscellaneous](#)



EG-Konf.

[Type Test Certificates/Test Report](#)

Test Certificates

Shipping Approval

[Special Test Certificate](#)



ABS



BUREAU VERITAS



LRS



PRS



RINA

Shipping Approval

other

Railway



[Confirmation](#)



VDE

[Vibration and Shock](#)

Further information

Information- and Downloadcenter (Catalogs, Brochures,...)

<https://www.siemens.com/ic10>

Industry Mall (Online ordering system)

<https://mall.industry.siemens.com/mall/en/en/Catalog/product?mlfb=3RV2902-1AM1>

Cax online generator

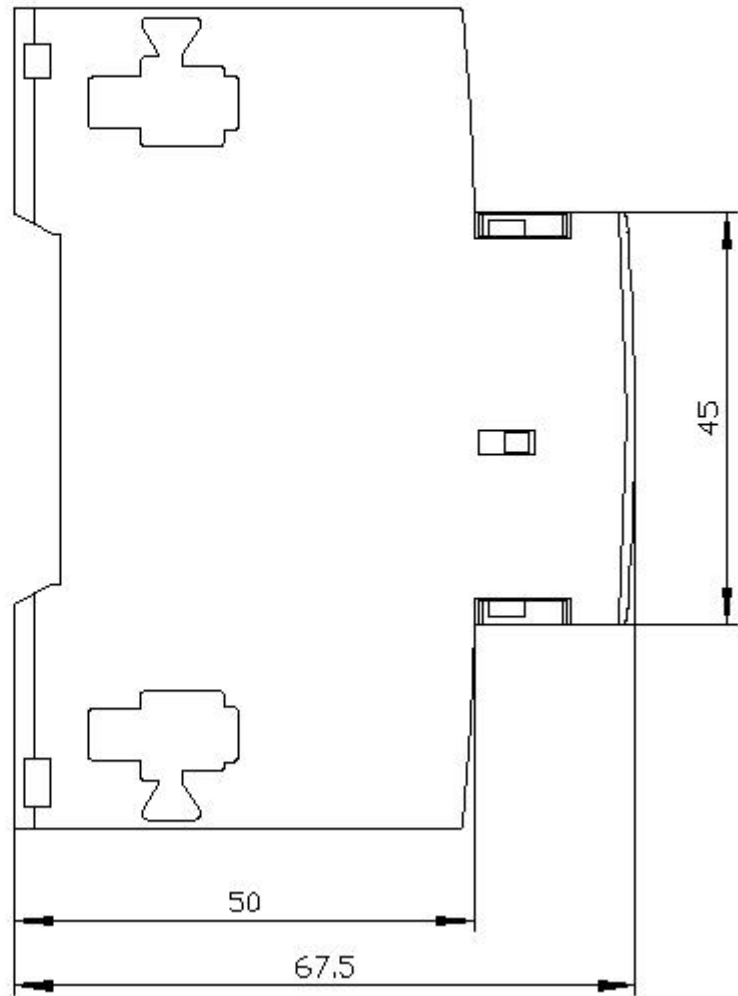
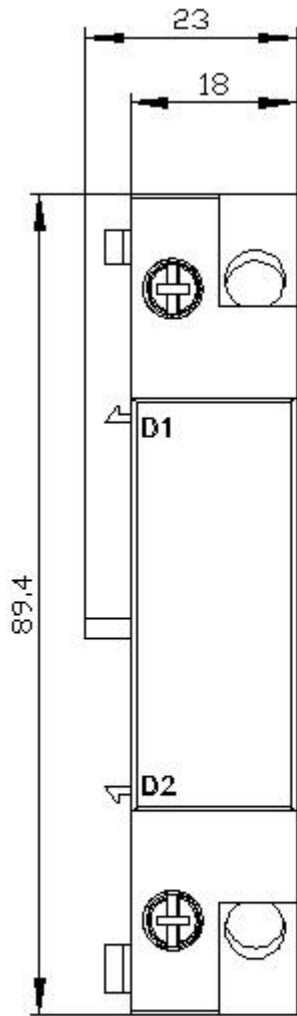
<http://support.automation.siemens.com/WW/CAXorder/default.aspx?lang=en&mlfb=3RV2902-1AM1>

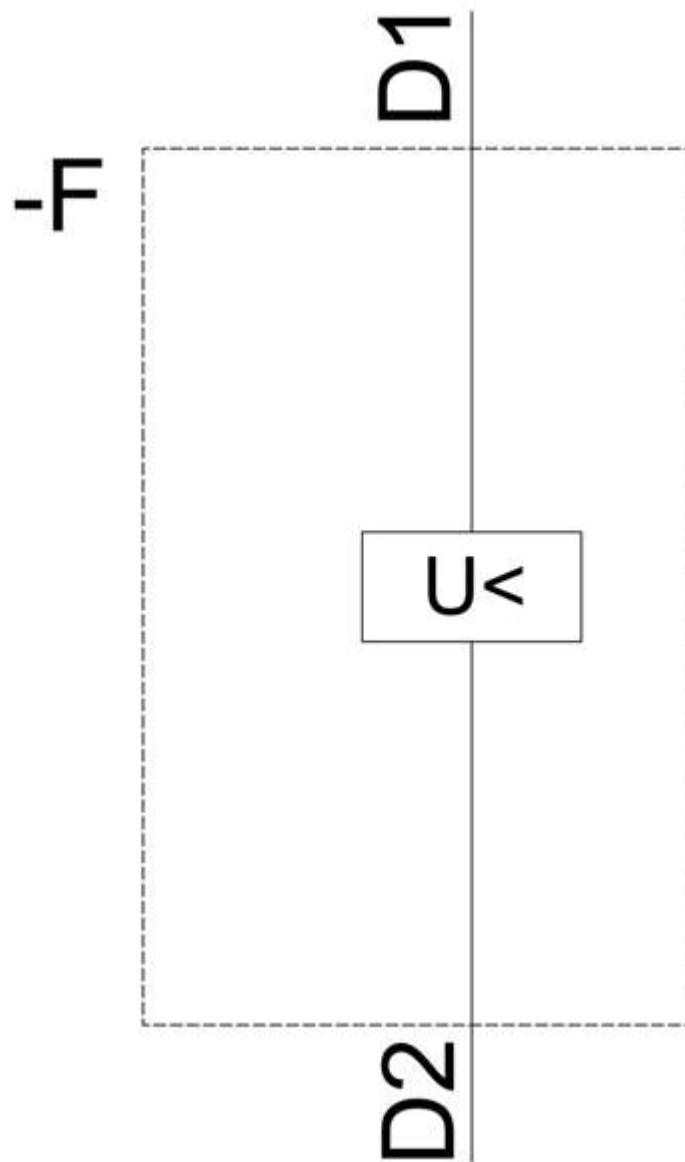
Service&Support (Manuals, Certificates, Characteristics, FAQs,...)

<https://support.industry.siemens.com/cs/ww/en/ps/3RV2902-1AM1>

Image database (product images, 2D dimension drawings, 3D models, device circuit diagrams, EPLAN macros, ...)

http://www.automation.siemens.com/bilddb/cax_de.aspx?mlfb=3RV2902-1AM1&lang=en





last modified:

12/15/2020 [↗](#)