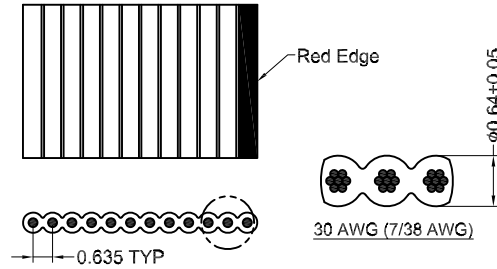
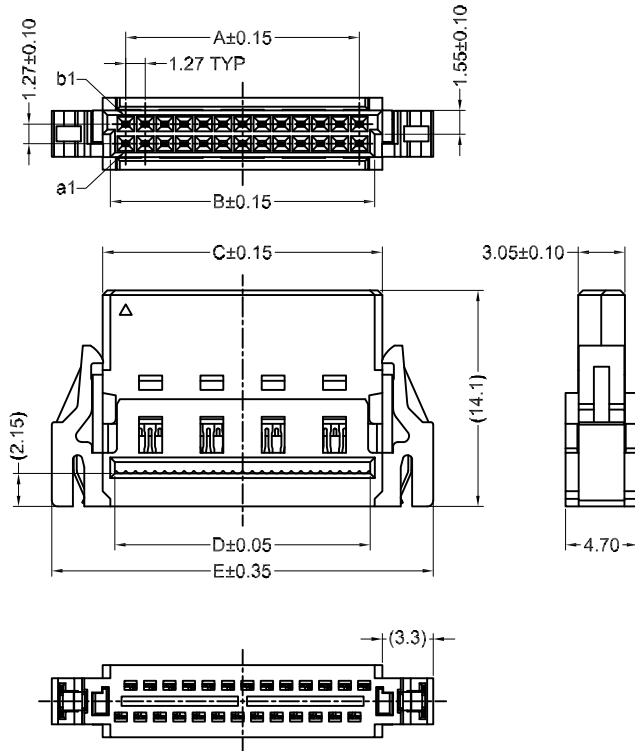
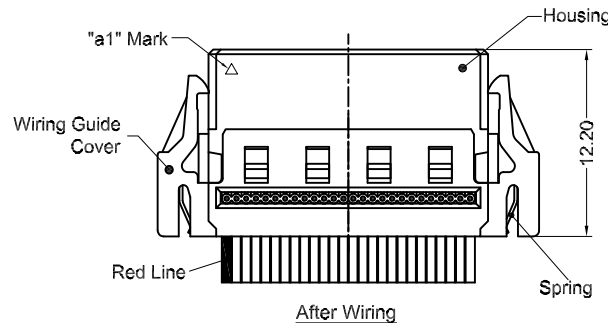


APPROVED: _____
 DATE: _____ TITLE: _____

Rev	AWO #	Description	Date	Appr
-		RELEASED	11/24/21	
A		ADDED PACKING	12/10/21	WX/RC



RECOMMENDED CABLE DIMENSION



DIM. TABLE

PIN NO.	DIMENSION				
	A	B	C	D	E
12	6.35	8.35	9.35	7.77	16.00
16	8.89	10.89	11.89	10.31	18.54
20	11.43	13.43	14.43	12.85	21.08
26	15.24	17.24	18.24	16.66	24.89
32	19.05	21.05	22.05	20.52	28.70
40	24.13	26.13	27.13	25.60	33.78
50	30.48	32.48	33.48	32.00	40.13
68	41.91	43.91	44.91	43.43	51.56
80	49.53	51.53	52.53	51.15	59.18

SPECIFICATIONS:

Material:
 Housing: Hi-Temp Thermoplastic, UL94V-0
 Wiring guide cover: Hi-Temp Thermoplastic, UL94V-0
 Contact: Phosphor Bronze
 Spring: Stainless
 Plating:
 Gold flash over Nickel underplate on contact area
 Tin over Nickel underplate on solder tails
 Environmental:
 Lead free, RoHS compliant



UNLESS OTHERWISE SPECIFIED ALL DIMENSIONS ARE MILLIMETERS [INCH]. TOLERANCES: EXCEPT AS NOTED

MM	ANGLE
.X ± .35	.X ± 2'
.XX ± .020	
.XXX ± .015	

DRAWN	WX	11/24/21
CHECKED	RC	11/24/21
APPROVED		

THIS DRAWING CONTAINS INFORMATION THAT IS PROPRIETARY AND SHOULD NOT BE USED WITHOUT PRIOR WRITTEN PERMISSION FROM ADAM TECH



909 Rahway Avenue,
 Union, NJ 07083
 Phone: 908-687-5000
 Fax: 908-687-5710

TITLE: .050 [1.27] PITCH SMC FEMALE CONNECTOR
 IDC TYPE, W/LATCH, SEL GOLD PLATED

SIZE	PART NO.	REV.
X	ESMC-F-XX-SGS-14.10-IDC-L	A
REF: S00242T	SCALE: NTS	SHEET 1 OF 3

6 5 4 3 2 1

APPROVED: _____
 DATE: _____ TITLE: _____

Rev	AWO #	Description	Date	Appr
SEE SHT 1 OF 3 FOR REVISION				

Filletted Corner(3x)
 Chamfered Corner
 (Cut View Direction)

Dimensions: 150, 4 x 18 = 72, 18, 210, 280, 19

Packing List

Item	pcs per row	pcs per tray	pcs per box	pcs per carton
ESMC-F-12-SGS-14.10-IDC-L	12	60	780	1560
ESMC-F-16-SGS-14.10-IDC-L	11	55	715	1430
ESMC-F-20-SGS-14.10-IDC-L	9	45	585	1170
ESMC-F-26-SGS-14.10-IDC-L	8	40	520	1040
ESMC-F-32-SGS-14.10-IDC-L	7	35	455	910
ESMC-F-40-SGS-14.10-IDC-L	6	30	390	780
ESMC-F-50-SGS-14.10-IDC-L	5	25	325	650
ESMC-F-68-SGS-14.10-IDC-L	4	20	260	520
ESMC-F-80-SGS-14.10-IDC-L	3	15	195	390

Filletted Corner
 Chamfered Corner
 (Cross-Stacking)

(Stacking Cutaway)
 9.7

NOTE

Material: PS
 Color: Ivory

UNLESS OTHERWISE SPECIFIED ALL DIMENSIONS ARE MILLIMETERS [INCH]. TOLERANCES: EXCEPT AS NOTED MM .X ± .35 .XX ± .020 .XXX ± .015 ANGLE .X ± 2°			ADAM TECH 909 Rahway Avenue, Union, NJ 07083 Phone: 908-687-5000 Fax: 908-687-5710	
DRAWN	WX	11/24/21	TITLE: .050 [1.27] PITCH SMC FEMALE CONNECTOR	
CHECKED	RC	11/24/21	IDC TYPE, W/LATCH, SEL GOLD PLATED	
APPROVED			SIZE X	PART NO. ESCMC-F-XX-SGS-14.10-IDC-L
THIS DRAWING CONTAINS INFORMATION THAT IS PROPRIETARY AND SHOULD NOT BE USED WITHOUT PRIOR WRITTEN PERMISSION FROM ADAM TECH			REF: S00242T	SCALE: NTS
			SHEET 2 OF 3	REV. A

6 5 4 3 2 1

6 5 4 3 2 1

APPROVED: _____
DATE: _____ TITLE: _____

Rev	AWO #	Description	Date	Appr
SEE SHT 1 OF 3 FOR REVISION				

Tray 14 - Cover (without connector)
Tray 13
(Stored Connectors)
Tray 1

PE Film
Cardboard (Top & Bottom)

Seal tape
Box

(Bonding together) (Put in the box & sealing)

Two boxes together

Carton
Seal tape

(Put in the carton & sealing)

304 336 175

P.O. NO.:
PART NO.:
QTY:
N.W.G.
G.W.G.
M/T/DATE/STATION

PCS
KGS
KGS

C/NO.:
MADE IN CHINA

UNLESS OTHERWISE SPECIFIED ALL DIMENSIONS ARE MILLIMETERS [INCH]. TOLERANCES: EXCEPT AS NOTED

MM	ANGLE
.X ± .35	.X ± 2°
.XX ± .020	
.XXX ± .015	

DRAWN	WX	11/24/21
CHECKED	RC	11/24/21
APPROVED		

THIS DRAWING CONTAINS INFORMATION THAT IS PROPRIETARY AND SHOULD NOT BE USED WITHOUT PRIOR WRITTEN PERMISSION FROM ADAM TECH

ADAM TECH

909 Rahway Avenue,
Union, NJ 07083
Phone: 908-687-5000
Fax: 908-687-5710

TITLE: .050 [1.27] PITCH SMC FEMALE CONNECTOR
IDC TYPE, W/LATCH, SEL GOLD PLATED

SIZE	PART NO.	REV.
X	ESMC-F-XX-SGS-14.10-IDC-L	A

REF: S00242T SCALE: NTS SHEET 3 OF 3

6 5 4 3 2 1