

**SAW Filter 403.50MHz**  
**Part No: MP03988**

**Model: TA1135A**  
**Rev No: 1**

**A. MAXIMUM RATING:**

1. Input Power Level: 15dBm
2. DC voltage: 3V
3. Operating Temperature: -10°C to 60°C
4. Storage Temperature: -40°C to +85°C

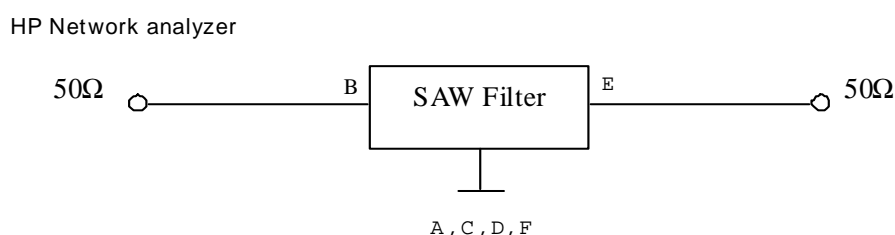
**B. ELECTRICAL CHARACTERISTICS:**

Item	Unit	Min.	Typ.	Max.
Center frequency Fc	MHz	-	403.5	-
Minimum Insertion loss 402 ~ 405MHz IL min	dB	-	1.5	2.5
Passband Ripple 402 ~ 405MHz		-	0.3	1.25
3dB Bandwidth BW -3dB	MHz	3	7.6	-
Attenuation (Reference level from IL min dB)				
358.5MHz	dB	40	64	-
358.5 ~ 384.0MHz	dB	35	59	-
415.0 ~ 423.0MHz	dB	25	36	-
423.0 ~ 503.0MHz	dB	40	59	-
Temperature coefficient of frequency	ppm/k		-37	
Source impedance Z <sub>S</sub>	Ω	-	50	-
Load impedance Z <sub>L</sub>	Ω	-	50	-

Note 1: IL min is the minimum of the pass band attenuation. The center frequency Fc is the mean value of the upper and lower frequencies at the 3dB filter attenuation level relative to the IL min.

Note 2: The room temperature, Tr, is 25°C. FTC is temperature coefficient of frequency. The nominal frequency at temperature, Tc, may be calculated from  $f = Fc [1 - FTC (Tr - Tc)]$ .

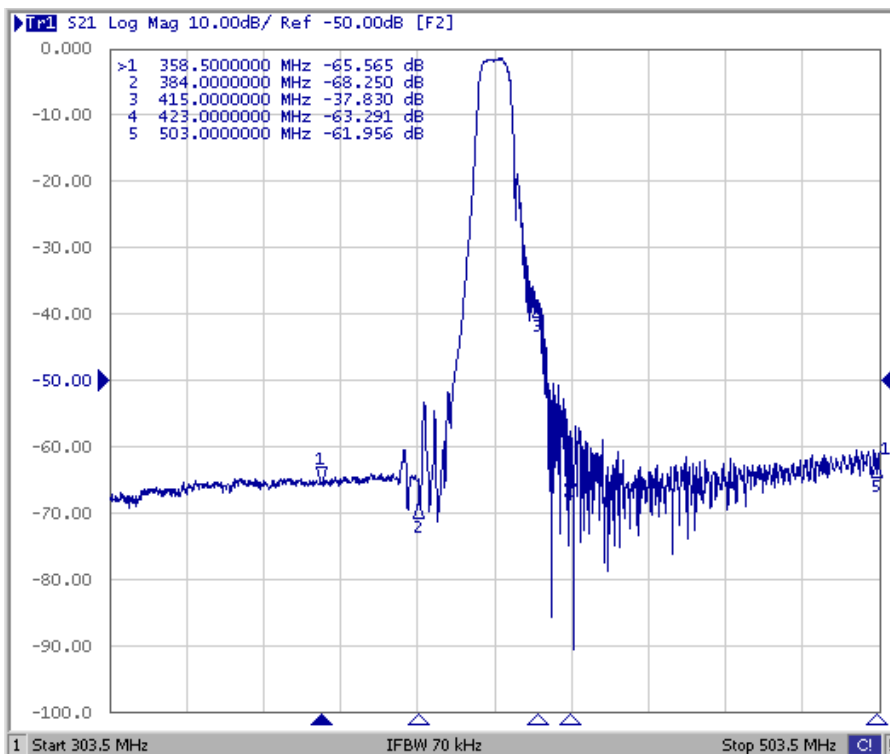
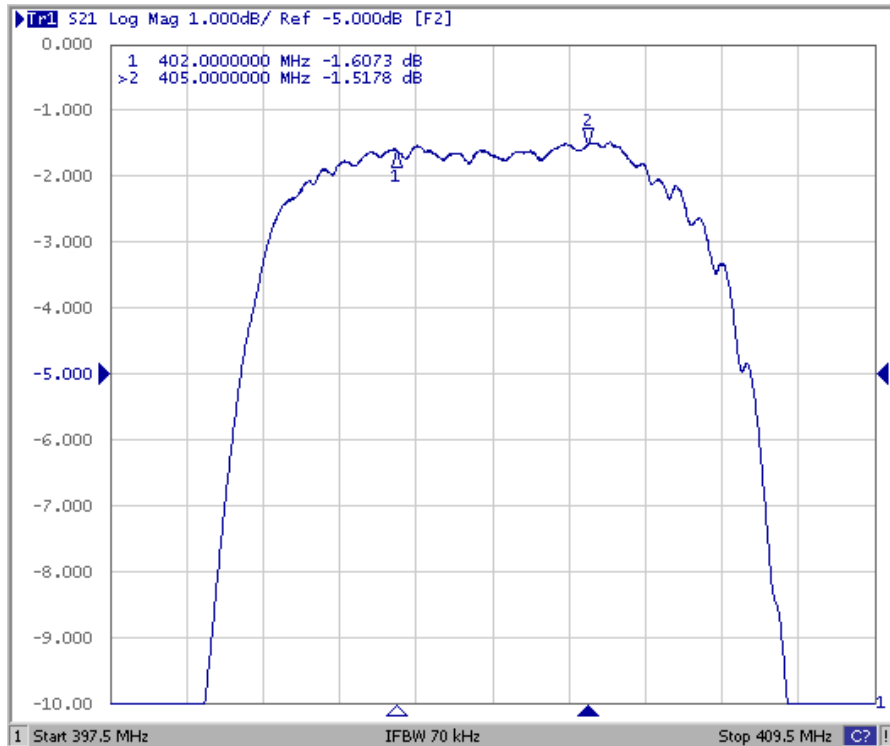
**C. MEASUREMENT CIRCUIT:**



**SAW Filter 403.50MHz**  
**Part No: MP03988**

**Model: TA1135A**  
**Rev No: 1**

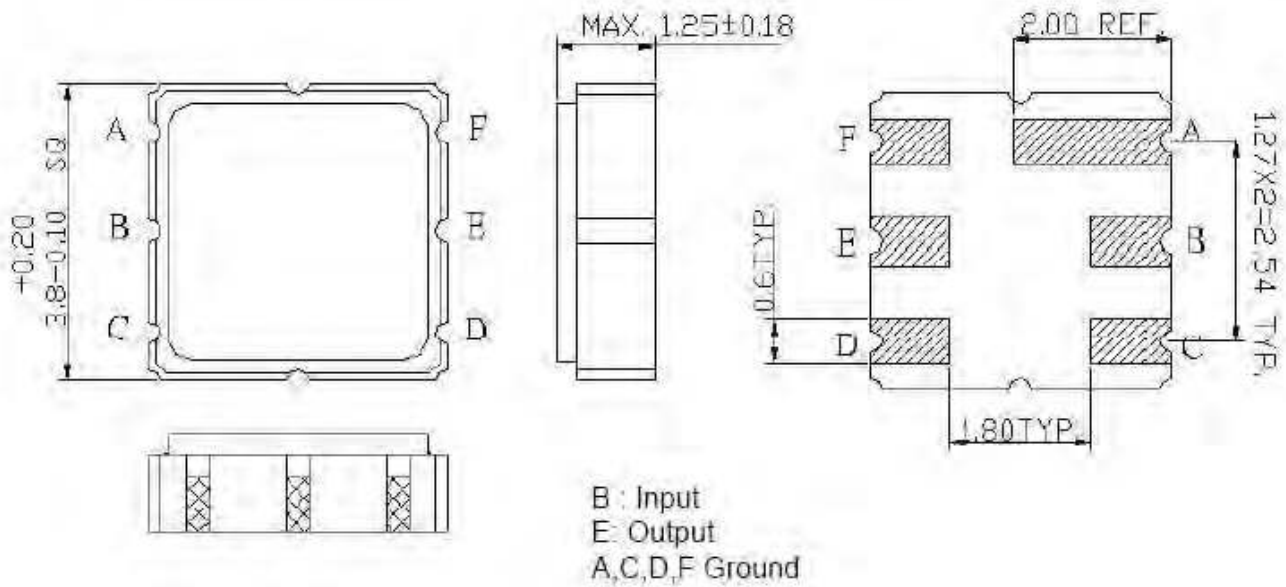
**D. FREQUENCY CHARACTERISTICS:**



**SAW Filter 403.50MHz**  
**Part No: MP03988**

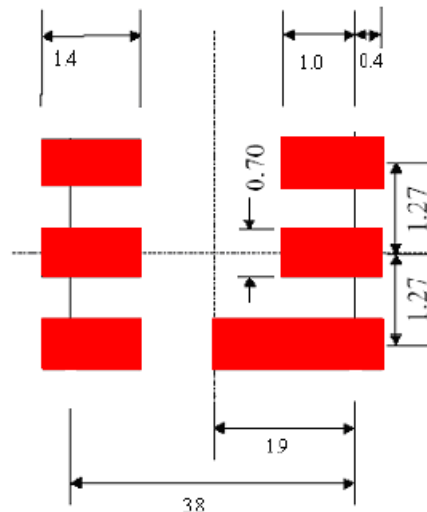
**Model: TA1135A**  
**Rev No: 1**

**E. OUTLINE DRAWING:**



Unit: mm

**F. PCB FOOTPRINT:**

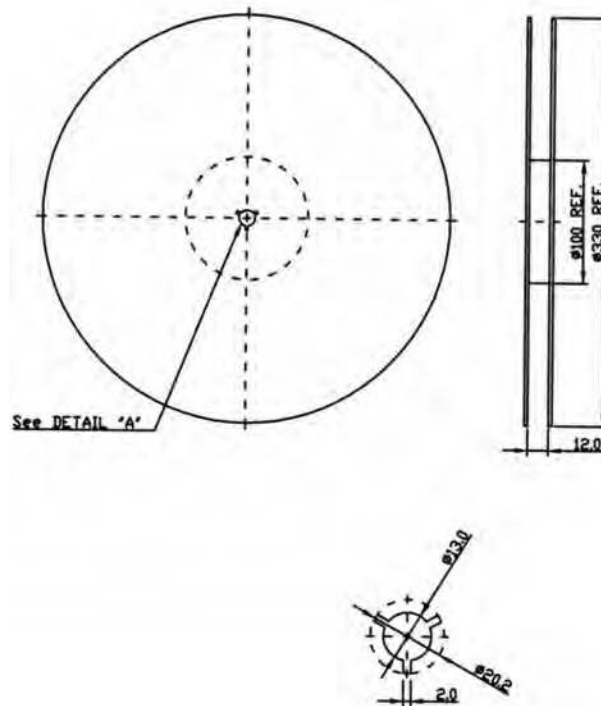


**SAW Filter 403.50MHz**  
**Part No: MP03988**

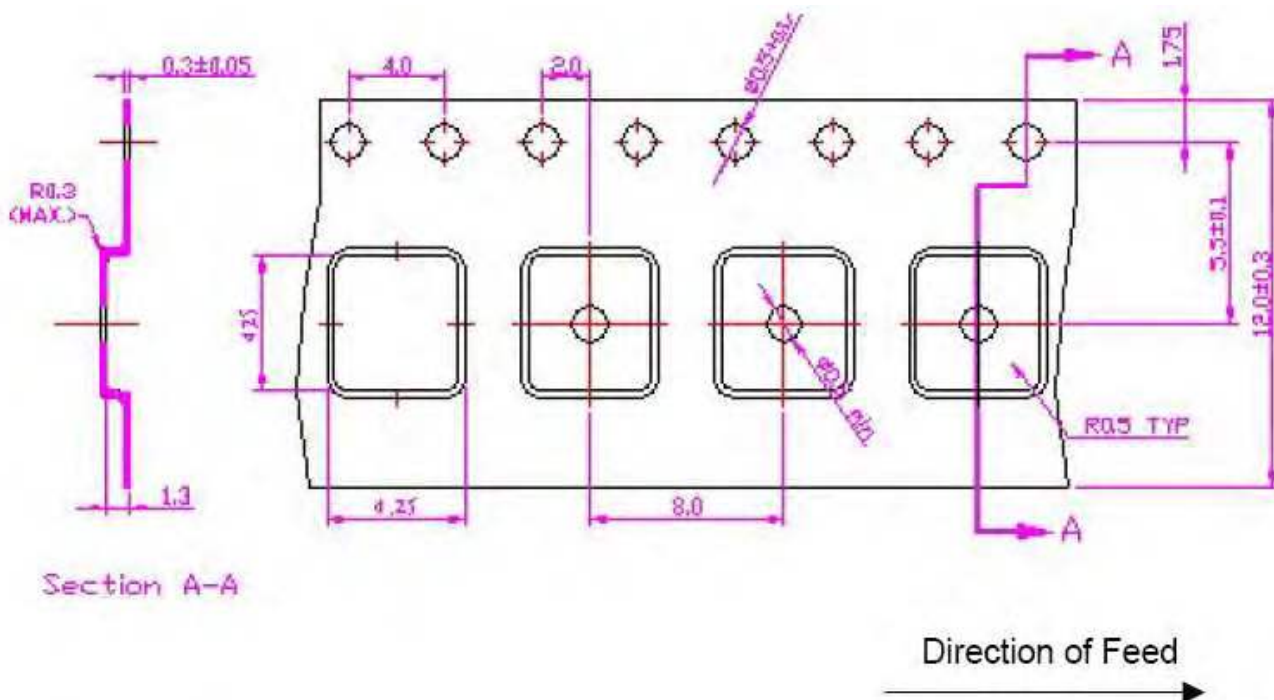
**Model: TA1135A**  
**Rev No: 1**

**G. PACKING:**

1. Reel Dimension



2. Tape Dimension



**SAW Filter 403.50MHz**  
**Part No: MP03988**

**Model: TA1135A**  
**Rev No: 1**

**H. RECOMMENDED REFLOW PROFILE:**

