

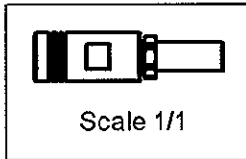
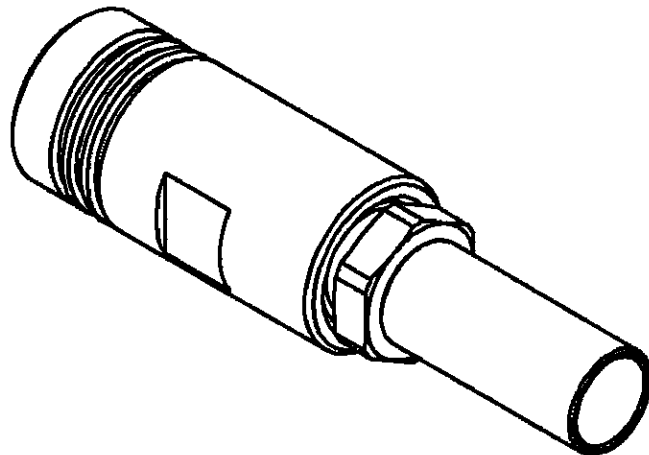
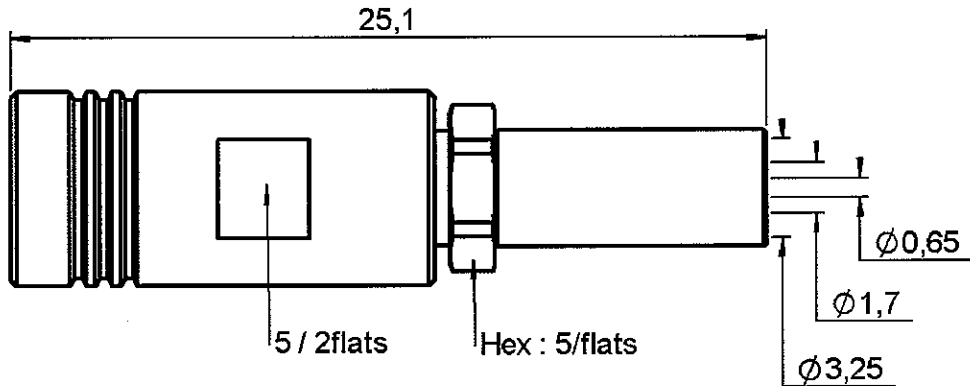
STRAIGHT PLUG CRIMP TYPE

R114.075.000

CABLE 2.6/50+75 S

Series : SMB

ORIGINAL



All dimensions are in mm.



COMPONENTS	MATERIALS	PLATINGS (µm)
BODY	BRASS	GOLD 0.2 OVER NICKEL 2
CENTER CONTACT	BERYLLIUM COPPER	GOLD 1.3 OVER NICKEL 2
OUTER CONTACT	BERYLLIUM COPPER	GOLD 0.2 OVER NICKEL 2
INSULATOR	PTFE	
GASKET	-	
OTHERS PARTS	BRASS	GOLD 0.2 OVER NICKEL 2
-	-	-
-	-	-

Issue : 0151 C

In the effort to improve our products, we reserve the right to make changes judged to be necessary.



STRAIGHT PLUG CRIMP TYPE

R114.075.000

CABLE 2.6/50+75 S

Series : **SMB**

ORIGINAL

PACKAGING

Standard	Unit	Other
100	'W' option	Contact us

SPECIFICATION

ELECTRICAL CHARACTERISTICS

Impedance		50 Ω
Frequency		0-4 GHz
VSWR	1.25 +	0.040 x F(GHz) Maxi
Insertion loss		0.25 √F(GHz) dB Maxi
RF leakage	- (57 - F(GHz)) dB Maxi
Voltage rating		335 Veff Maxi
Dielectric withstanding voltage		1000 Veff mini
Insulation resistance		1000 MΩ mini

CABLE ASSEMBLY

Stripping	a	b	c	d	e	f
mm	2.20	5.40	15.5	0.00	13.3	0.00

Assembly instruction :

Recommended cable(s)
 KX 22A
 RG 188
 RG 179
 RG 187
 RG 316

Cable retention

- pull off **110** N mini
- torque **3.2** N.cm

MECHANICAL CHARACTERISTICS

Center contact retention		
Axial force – Mating end	10	N mini
Axial force – Opposite end	10	N mini
Torque	NA	N.cm mini

TOOLING

Part Number	Description	Hexagon
.	.	.
R282.211.000	CRIMPING TOOL	3.25
R282.235.003	CRIMPING DIES	3.25
R282.293.000	CRIMPING TOOL	-

Recommended torque		
Mating	NA	N.cm
Panel nut	NA	N.cm
Clamp nut	70	N.cm
A/F clamp nut	5.000	mm

OTHERS CHARACTERISTICS

Mating life	500	Cycles mini
Weight	3.300	g

ENVIRONMENTAL

Operating temperature	-65/+165	°C
Hermetic seal	NA	Atm.cm3/s
Panel leakage	NA	

Issue : **0151 C**

In the effort to improve our products, we reserve the right to make changes judged to be necessary.



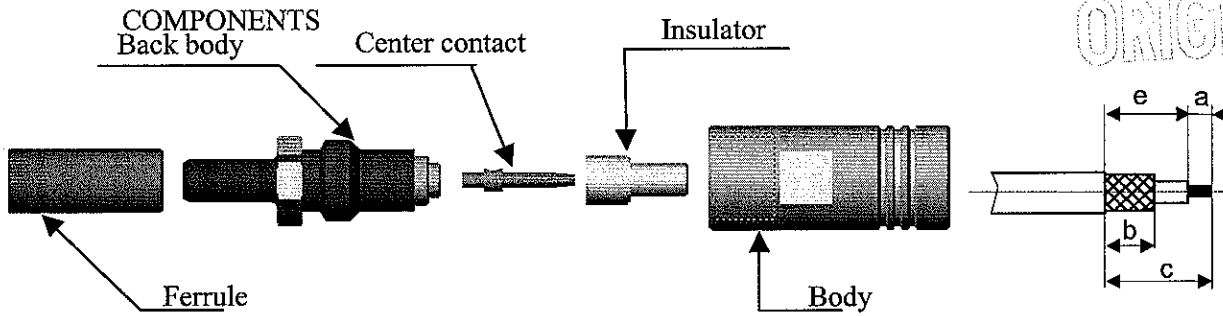
STRAIGHT PLUG CRIMP TYPE

CABLE 2.6/50+75 S

R114.075.000

Series : SMB

ORIGINAL



1

Slide the heatshrink onto the cable (in option).
Slide the ferrule onto the cable.
If solder : the hole in front.
If crimping : the hole in back.
Strip the cable.

4

Mount the center contact inner conductor.
Solder or crimping the contact with crimping tool (see connector TDS).
Mount the front insulator.

2

Fan the braid.
Mount the cable in the back body.

E

Mount the sub-assembly into the connector and screw the body
Recommended couplina toraue : 170N cm.

3

Slide ferrule over the braid.
Crimp the ferrule with crimping tool (see connecteur TDS).

€

Place and shrink the heatshrink between 135° to 250° at back to body (option).

Issue : 0151 C

In the effort to improve our products, we reserve the right to make changes judged to be necessary.

