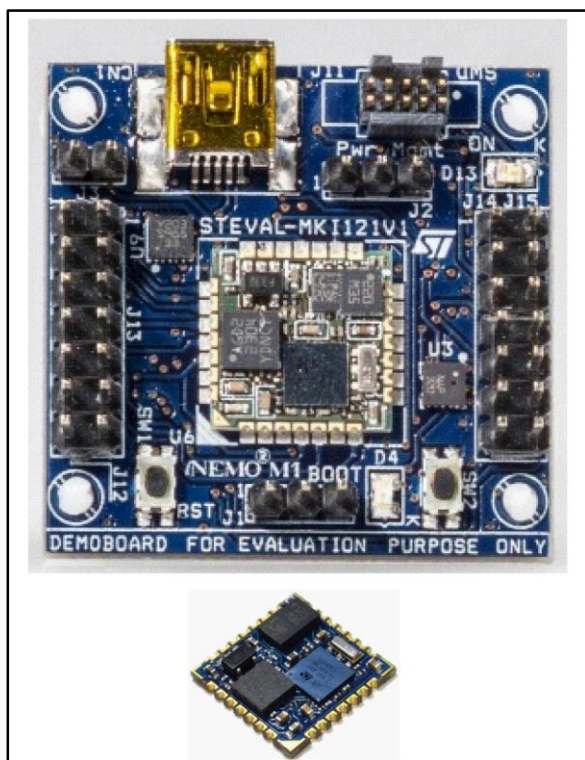


## INEMO-M1 Discovery bundle

Data brief



### Features

- Kit contains: 1 STEVAL-MKI121V1 and 1 INEMO-M1 system-on-board (SoB)
- All the flexibility of INEMO-M1
- Complete software development kit
- Embedded firmware drivers
- RoHS compliant

### Description

The INEMO-M1 Discovery bundle includes a STEVAL-MKI121V1 and a INEMO-M1 SoB to enable developers to unleash their creativity on their own board. The STEVAL-MKI121V1 facilitates the evaluation of the INEMO-M1, thanks to the availability of the INEMO-M1 pinout, two power supply options and a complete, flexible software development kit. Once you've discovered the INEMO-M1's capabilities, you'll quickly be able create your own board by using the sample available in the bundle.

# 1 Revision history

**Table 1: Document revision history**

Date	Rev	Changes
23-Jan-2015	1	First release.

**IMPORTANT NOTICE – PLEASE READ CAREFULLY**

STMicroelectronics NV and its subsidiaries ("ST") reserve the right to make changes, corrections, enhancements, modifications, and improvements to ST products and/or to this document at any time without notice. Purchasers should obtain the latest relevant information on ST products before placing orders. ST products are sold pursuant to ST's terms and conditions of sale in place at the time of order acknowledgement.

Purchasers are solely responsible for the choice, selection, and use of ST products and ST assumes no liability for application assistance or the design of Purchasers' products.

No license, express or implied, to any intellectual property right is granted by ST herein.

Resale of ST products with provisions different from the information set forth herein shall void any warranty granted by ST for such product.

ST and the ST logo are trademarks of ST. All other product or service names are the property of their respective owners.

Information in this document supersedes and replaces information previously supplied in any prior versions of this document.

© 2015 STMicroelectronics – All rights reserved