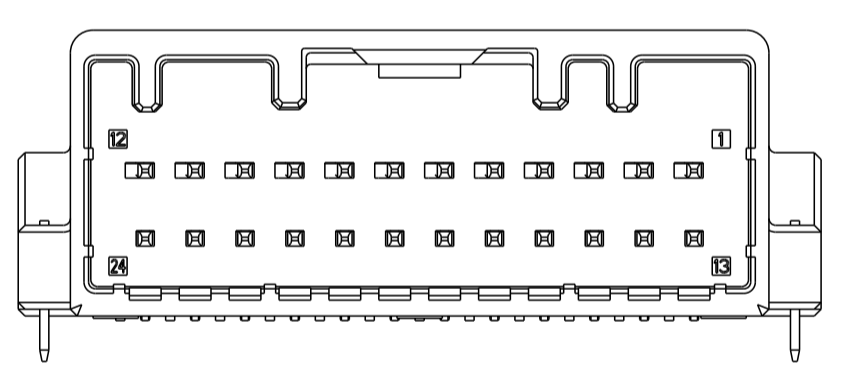
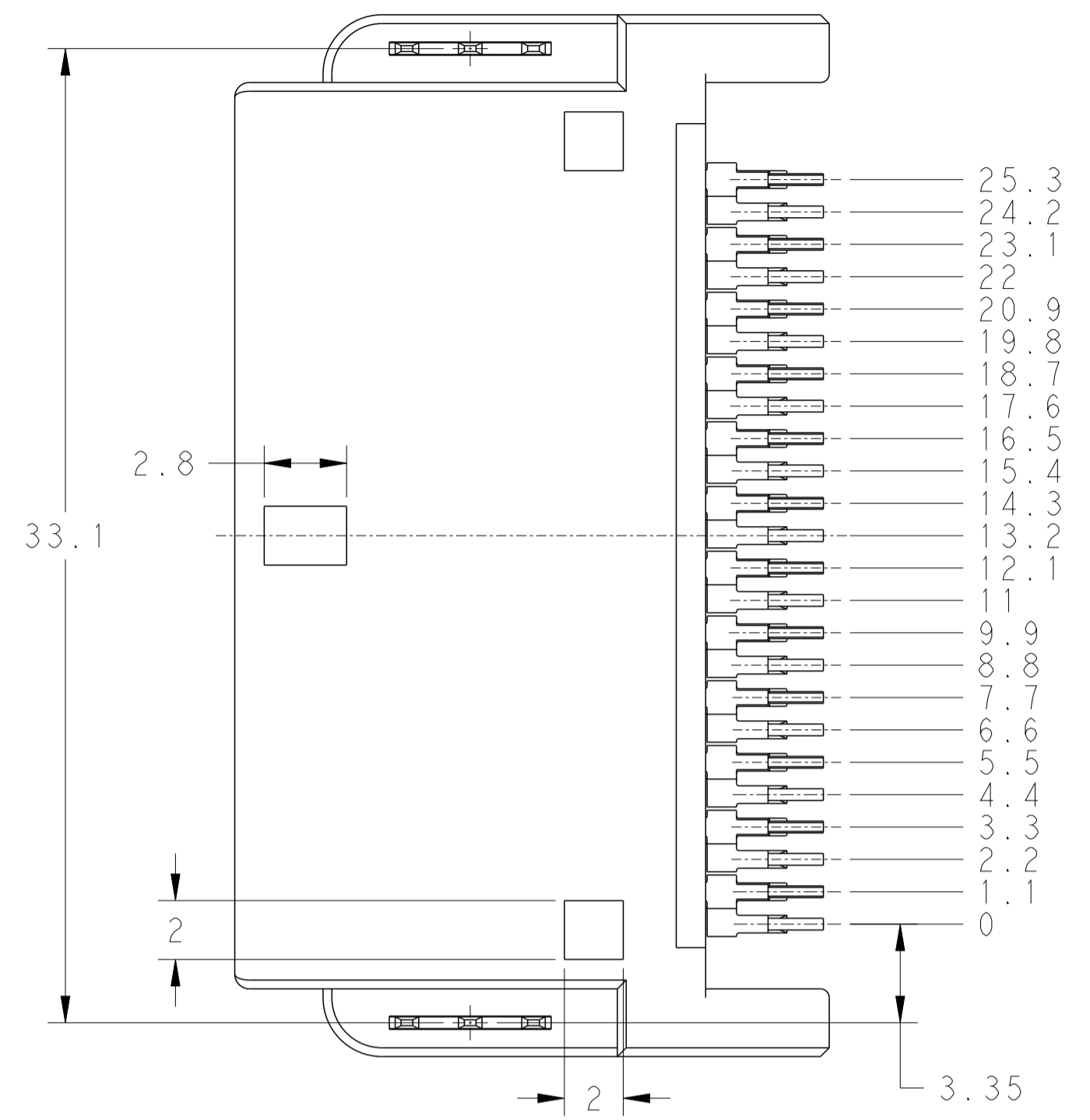
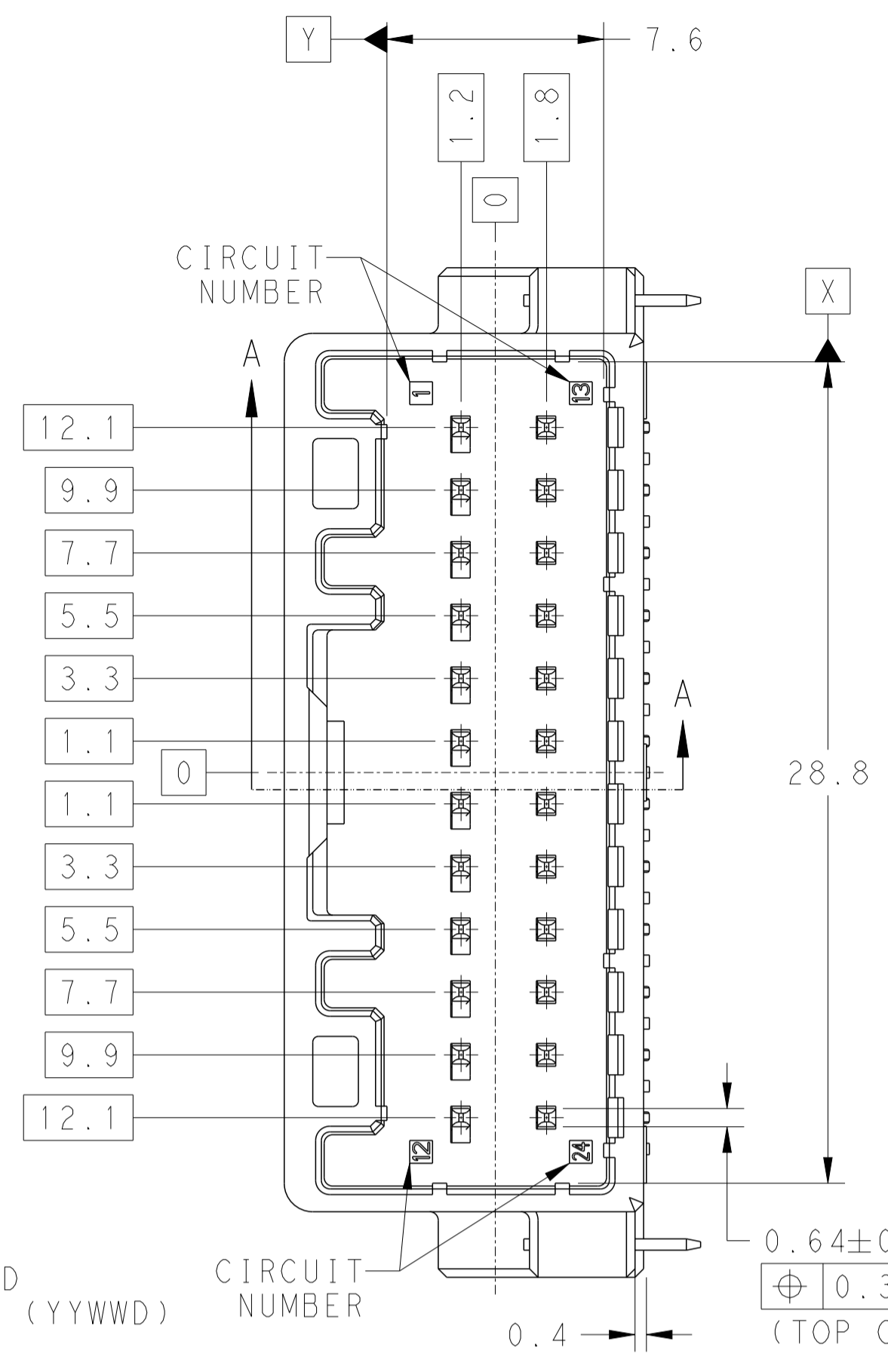
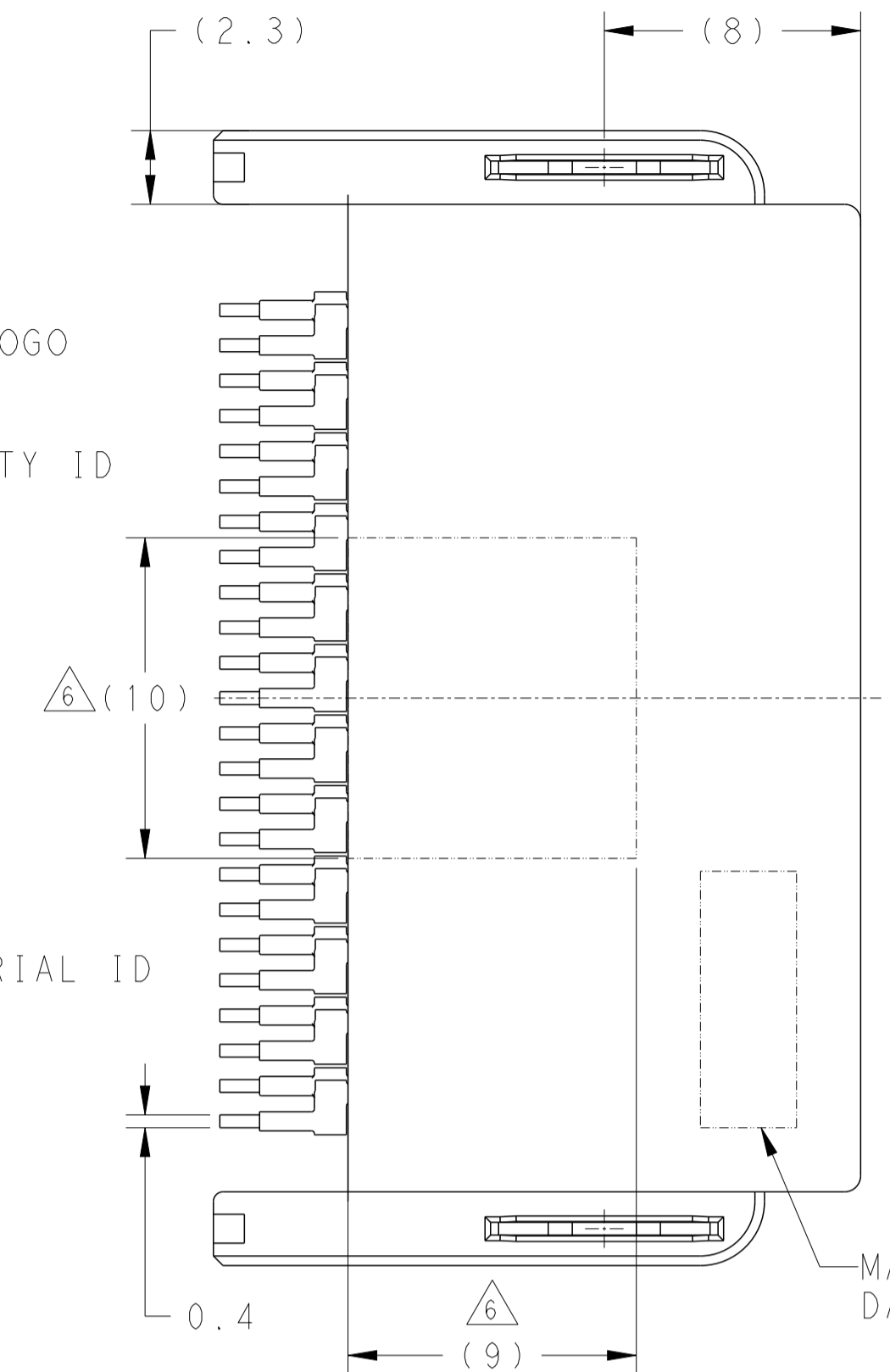
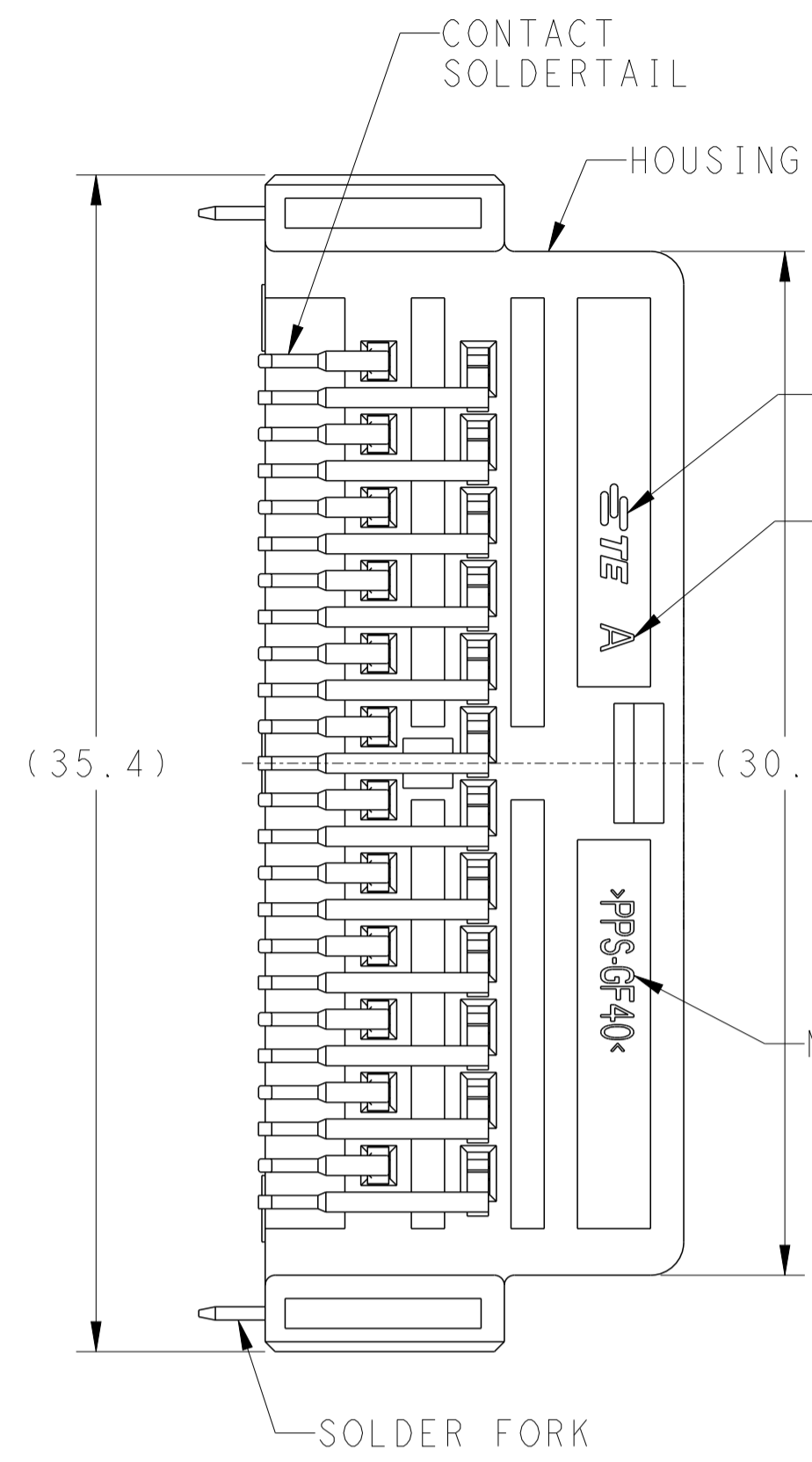
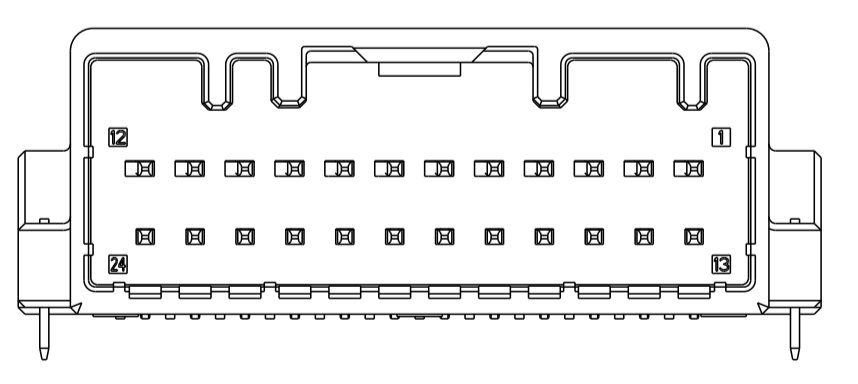


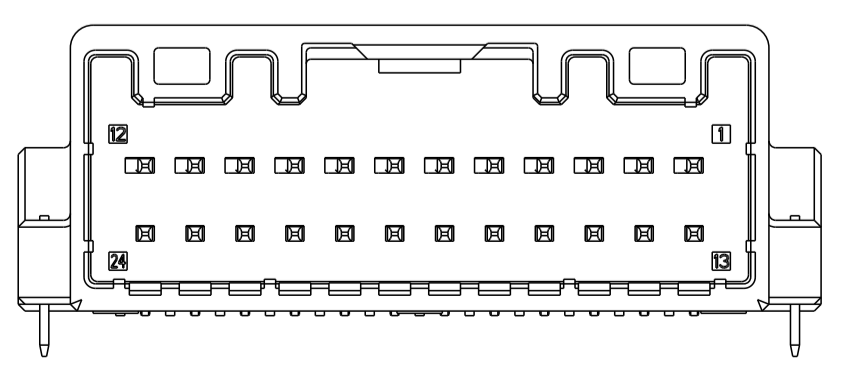
REVISIONS				
P	LTN	DESCRIPTION	DATE	APP'D
A1		REVISED ECR-18-006484	14JUN2018	JC LSF
B		REVISED ECR-18-012315	21NOV2018	JC LSF
B1		REVISED ECR-19-006542	24APR2019	JC TK
B2		REVISED ECR-23-181136	13JUL2023	JC KK



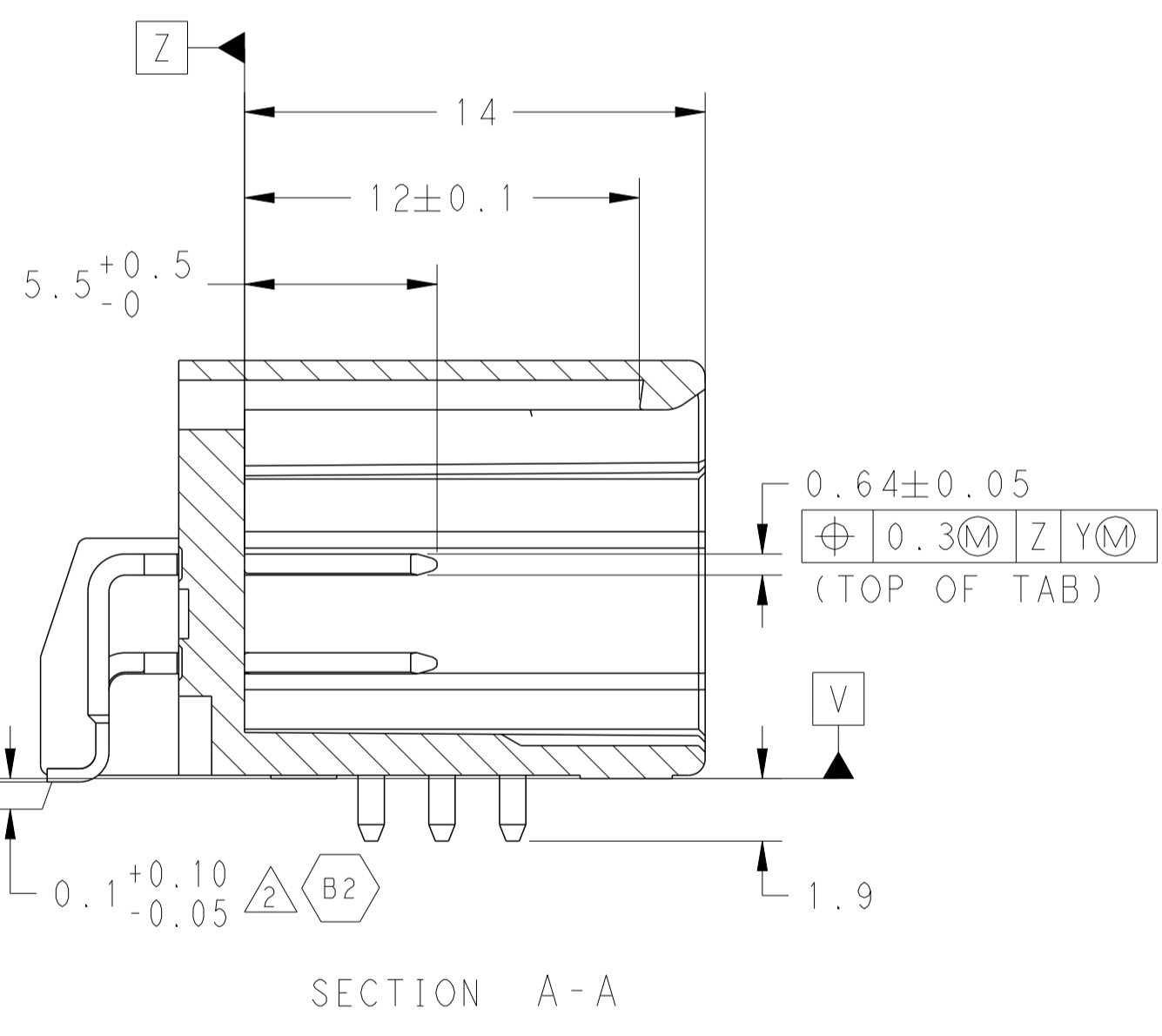
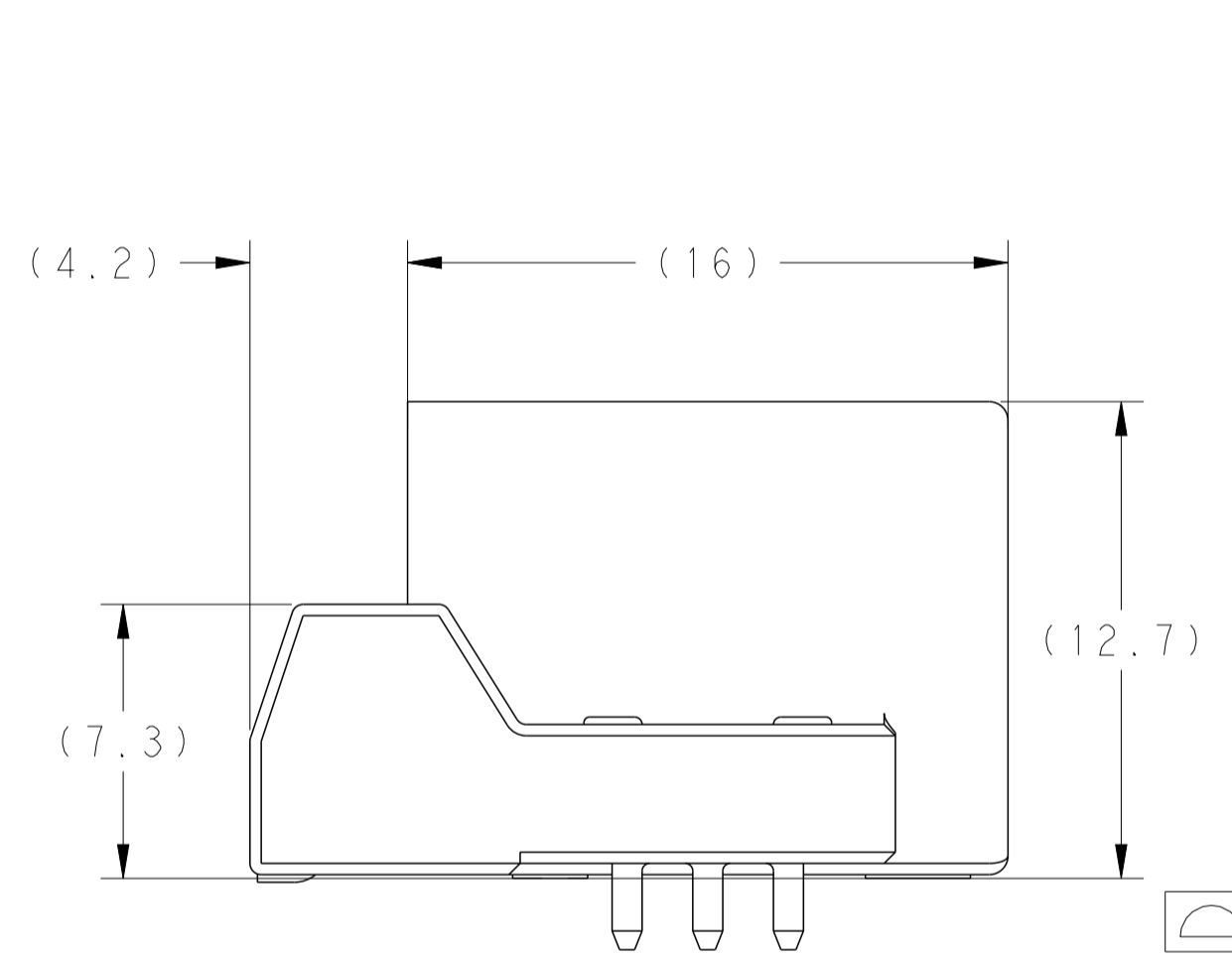
SWS TH24MB-X



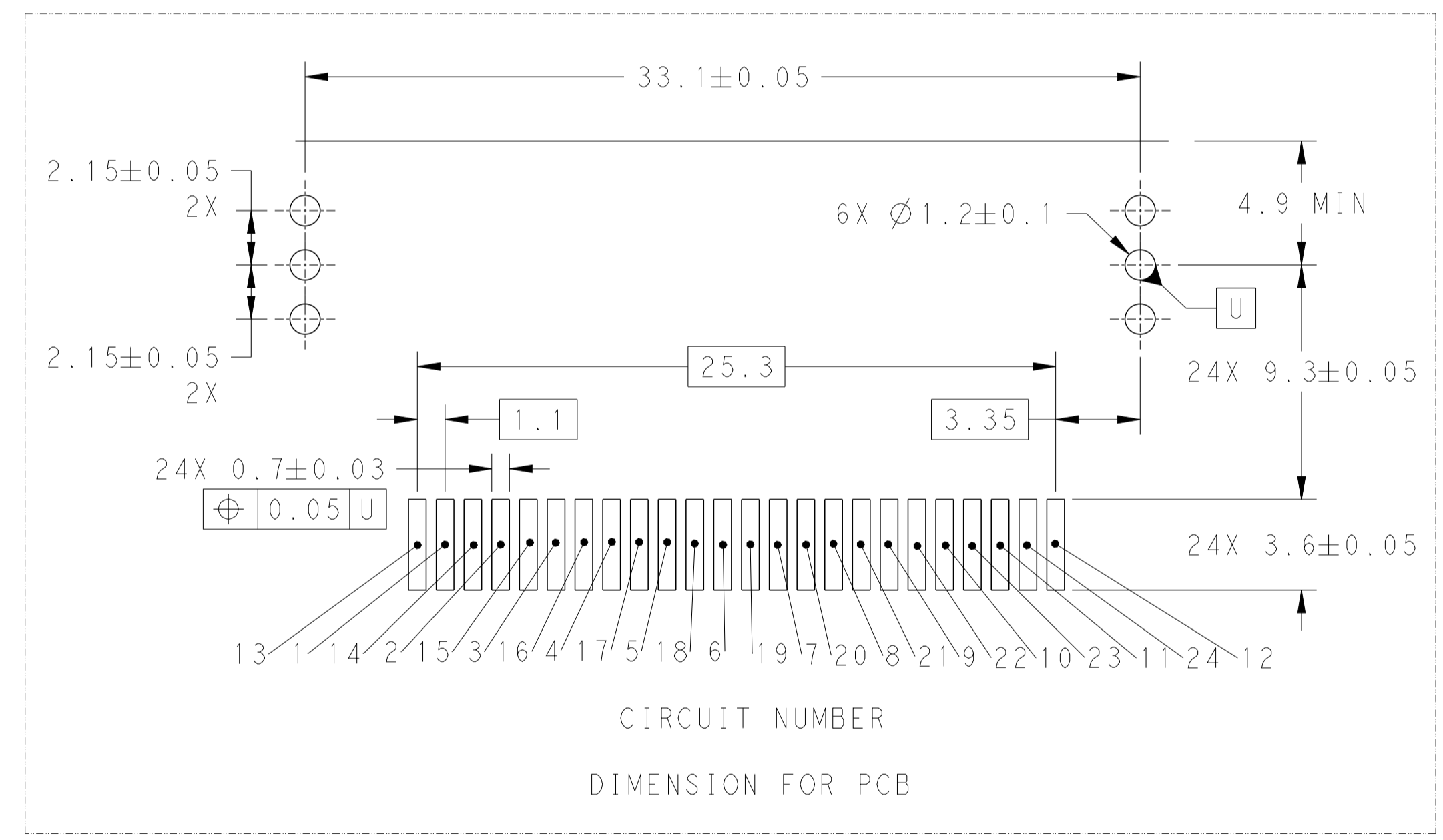
SWS TH24MGY-X



TE KEYING 1



SECTION A-A



CIRCUIT NUMBER  
DIMENSION FOR PCB

- △ THIS DIMENSION IS MEASURED FROM LOWEST SOLDERTAIL TO HIGHEST SOLDERTAIL ALL SOLDERTAILS TO BE BELOW DATUM V
- △ DISTANCE OF SOLDERTAIL 1~24 TO DATUM V
- 3. WHEN MOUNTING, THICKNESS OF SOLDER PASTE: 0.15mm MIN
- △ BLISTER = ANTISTATIC, RESISTANCE 100GΩ MAX REEL = SAME AS BLISTER BLISTER TAPE = SAME AS BLISTER
- B2 5. MATING PLUG PART NUMBER  
TE KEYING 1: 1717112-1  
SWS TH24MB-X: 6098-7060  
SWS TH24MGY-X: 6098-7061
- B2 6. RECOMMENDED AREA FOR CONNECTOR VACUUM PICK UP
- B2 7. HANDLING THIS PART SHOULD FOLLOW INSTRUCTION SHEET: 411-51005

PACKAGING	KEYING	MATERIAL	PLATING	MATERIAL	PLATING	MATERIAL	COLOR	PART NUMBER
PAPER BOX	ANTISTATIC TAPE & REEL <sup>4</sup>	TE KEY 1				BRASS	BLACK	2237067-5
	NON-ANTISTATIC TAPE & REEL	SWS TH24MB-X	BRASS	POST TIN OVER Ni	BRASS	POST TIN OVER Ni	NATURAL	2237067-4
		SWS TH24MGY-X					GREY	2237067-3
		TE KEY 1					BLUE	2237067-2
	TE KEY 1					BLACK	2237067-1	

THIS DRAWING IS A CONTROLLED DOCUMENT.

APPROVED: JASON CHOW 21JUL2016  
CHK: JIL LIM 21JUL2016  
APPROVED: SE LEONG 21JUL2016

NAME: 24 POSITION CAP ASSEMBLY

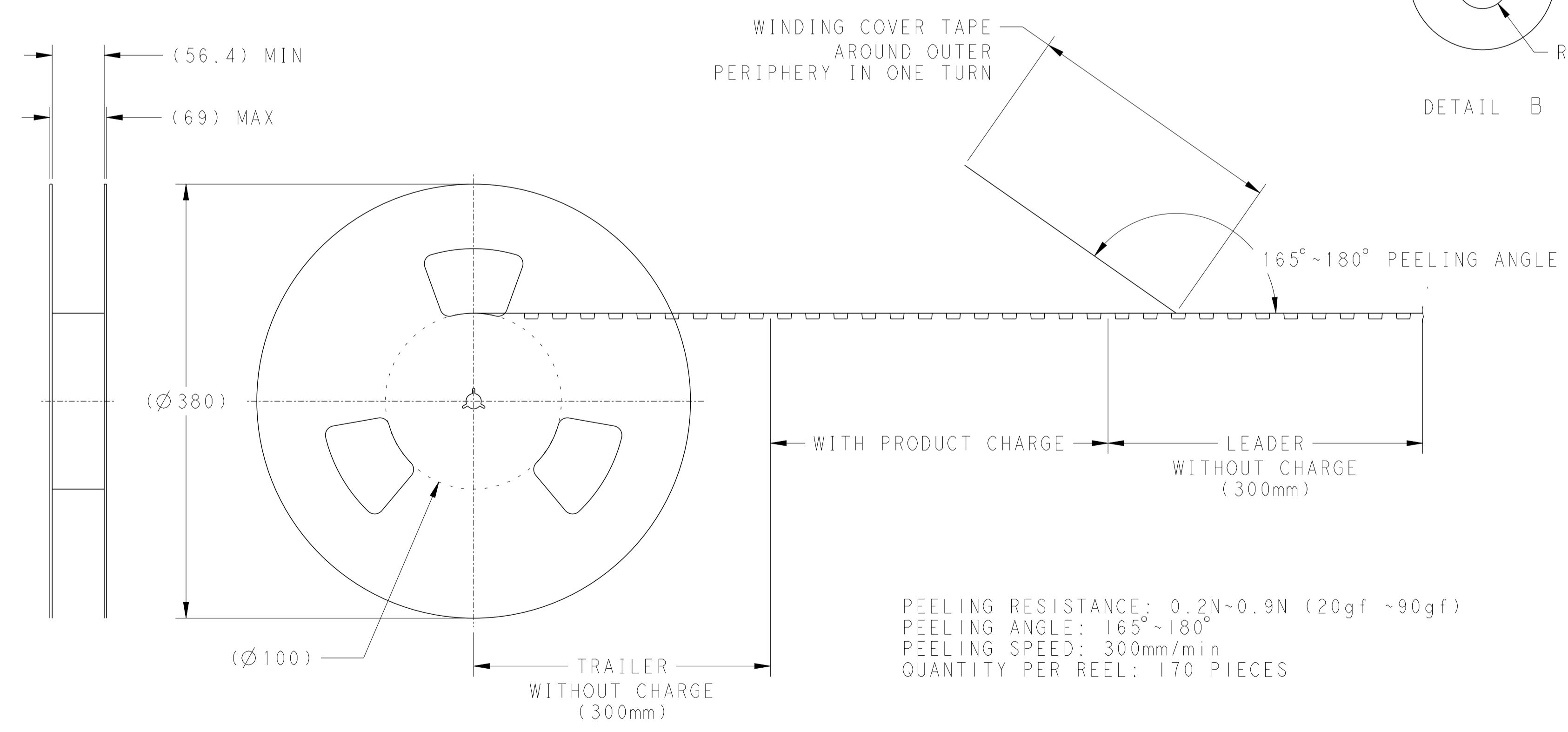
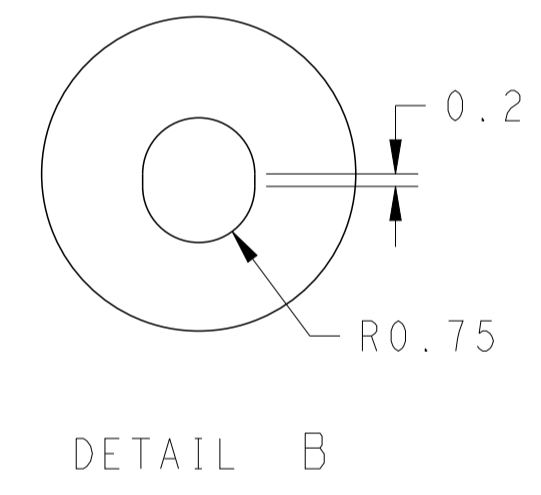
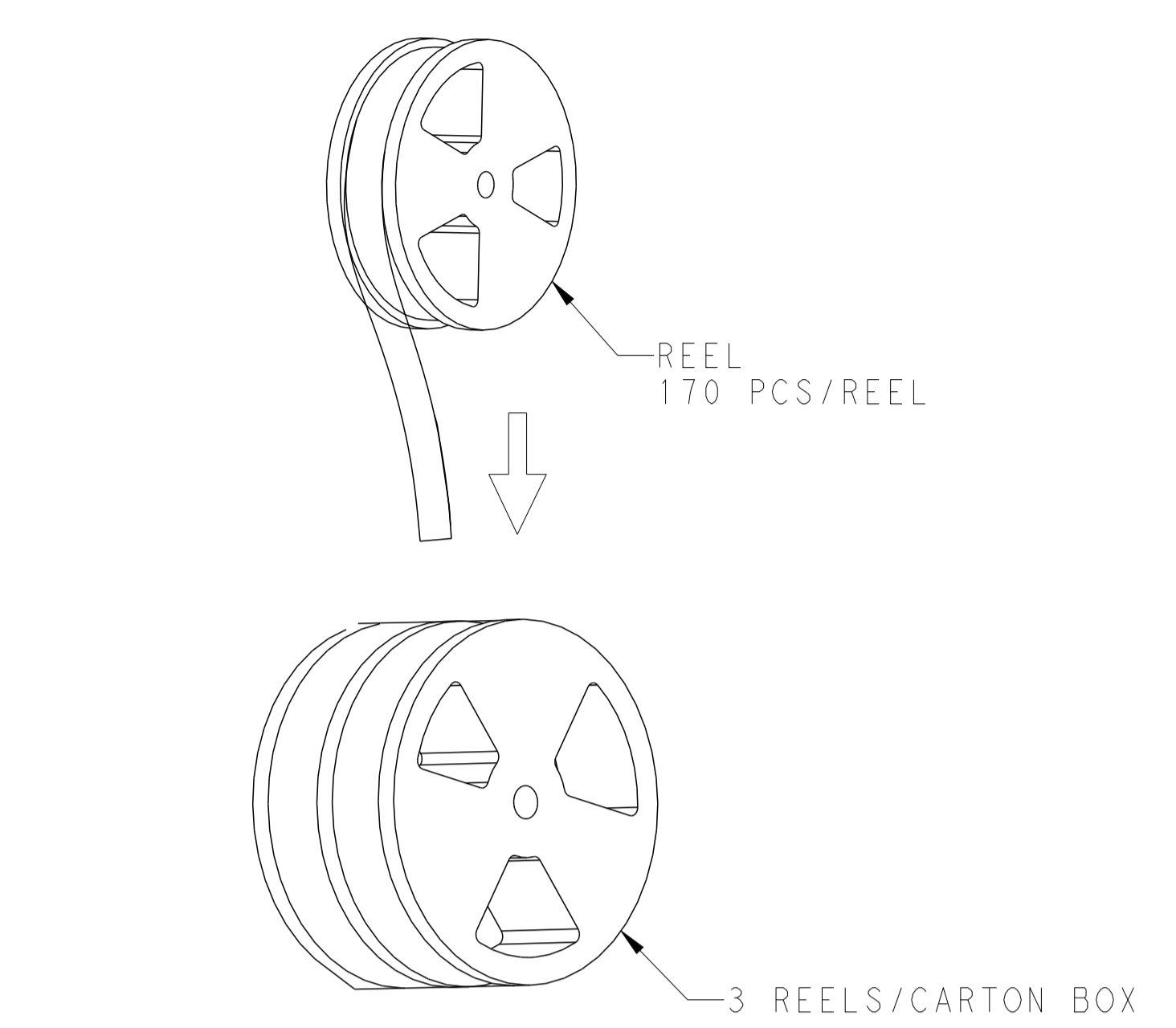
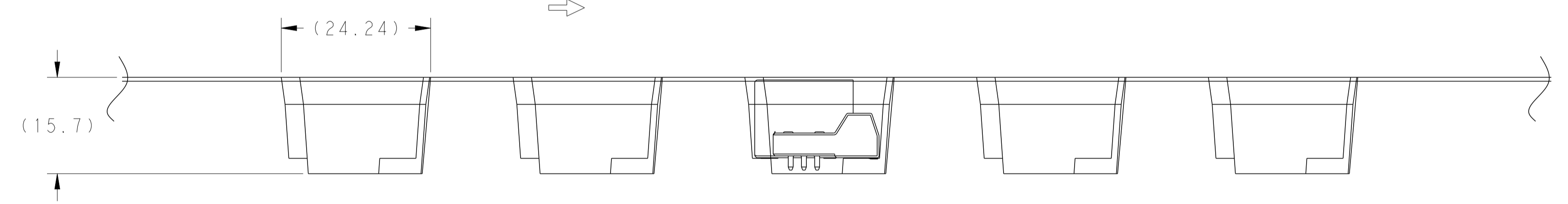
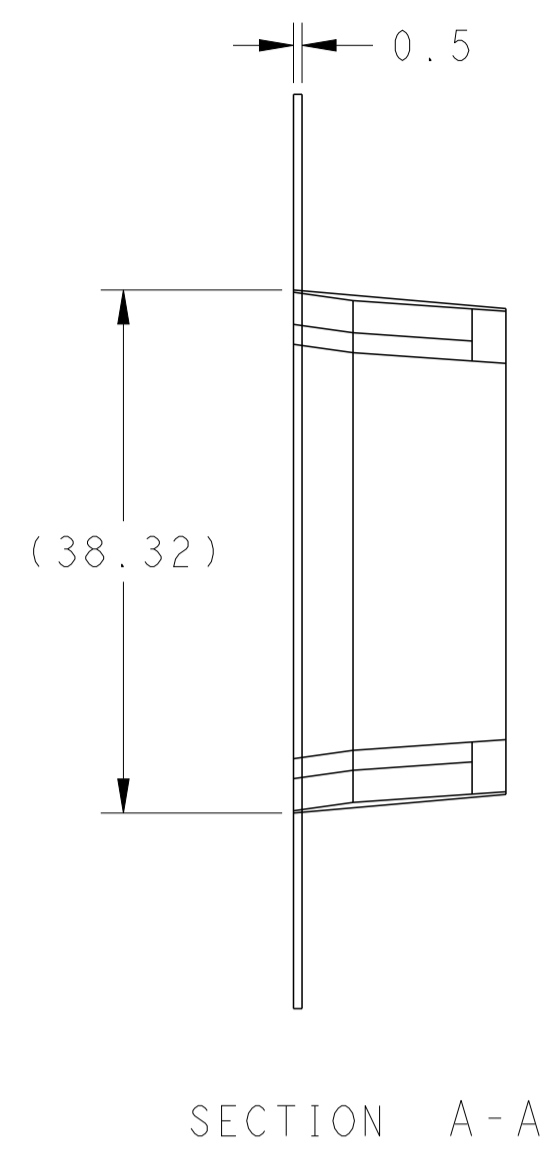
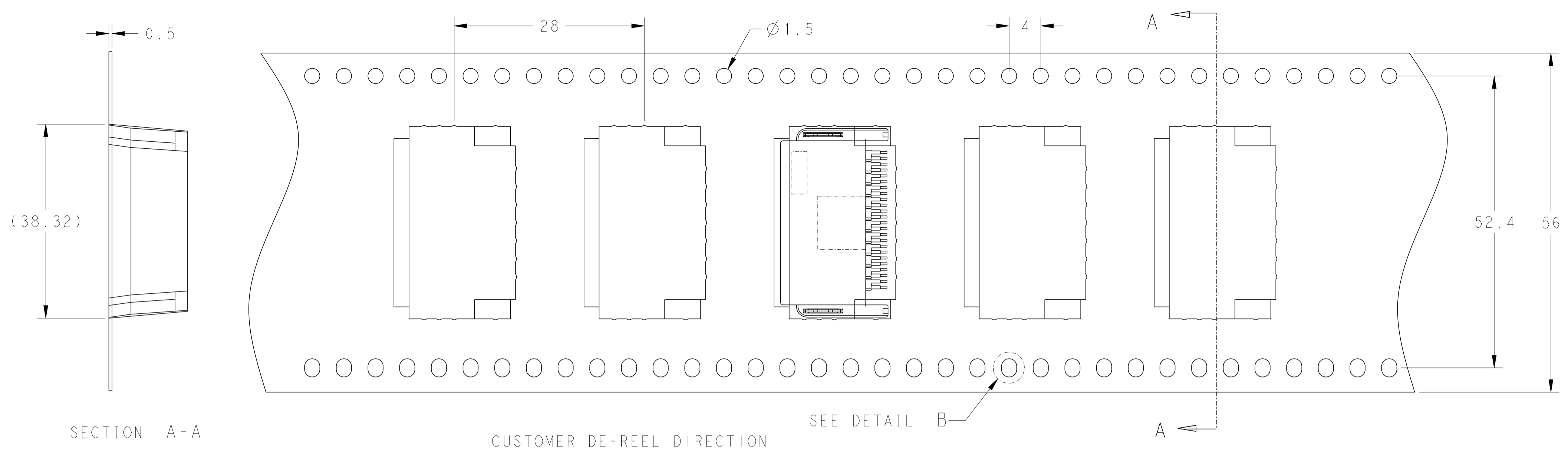
PRODUCT SPEC: 108-51110  
APPLICATION SPEC: 108-51110

SIZE: A1 CAGE CODE: 00779 DRAWING NO: 2237067

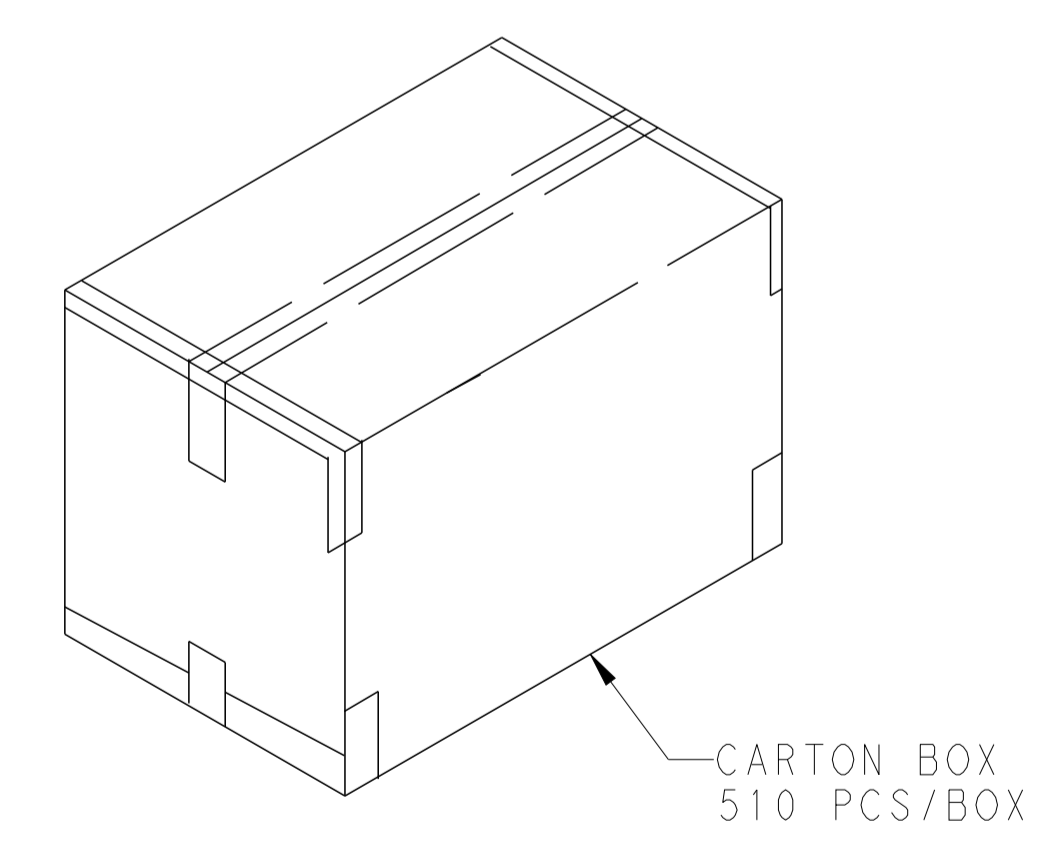
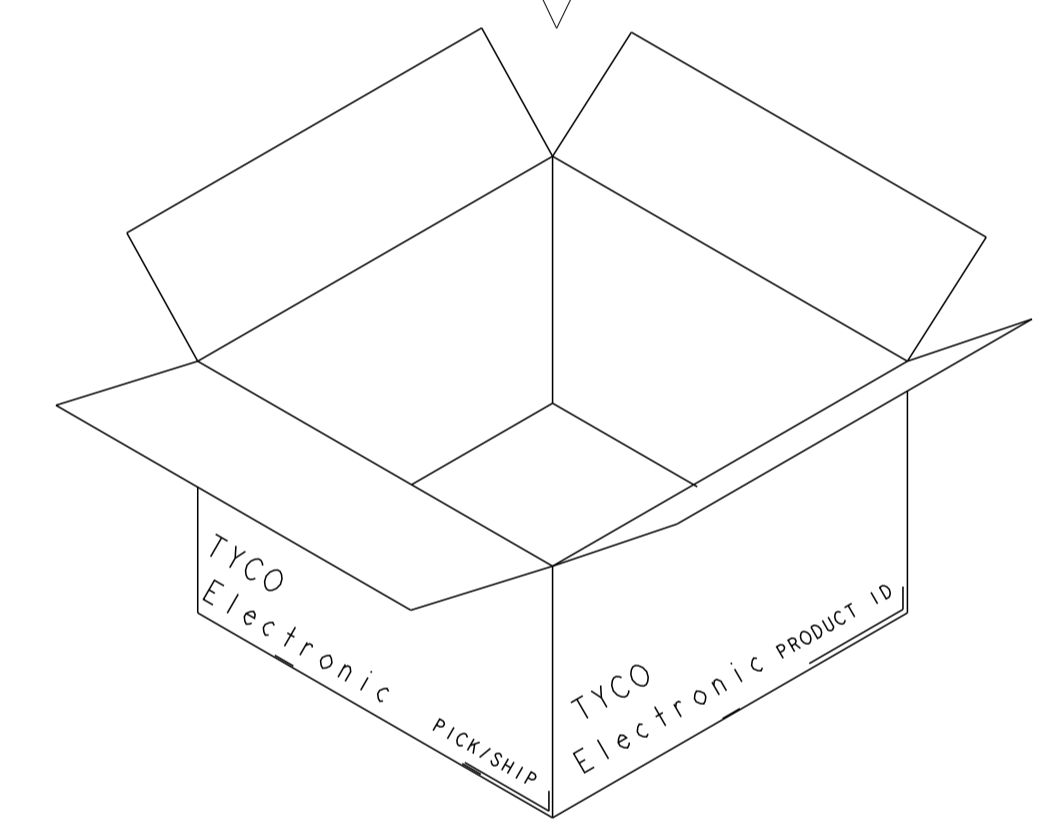
WEIGHT: 5.5g

SCALE: 5:1 SHEET 1 OF 2 REV: B2

REVISIONS				
P.	LTN.	DESCRIPTION	DATE	APVD.
-	-	SEE SHEET 1	-	-



PEELING RESISTANCE: 0.2N~0.9N (20gf ~90gf)  
 PEELING ANGLE:  $165^{\circ} \sim 180^{\circ}$   
 PEELING SPEED: 300mm/min  
 QUANTITY PER REEL: 170 PIECES



THIS DRAWING IS A CONTROLLED DOCUMENT.		OWN: JASON CHOW 21JUL2016	TE Connectivity															
DIMENSIONS: mm		CHK: JI LIM 21JUL2016																
TOLERANCES UNLESS OTHERWISE SPECIFIED:		APVD: SE LEONG 21JUL2016	NAME: 24 POSITION CAP ASSEMBLY															
<table border="1"> <tr><td>0 PLC</td><td><math>\pm 0.3</math></td></tr> <tr><td>1 PLC</td><td><math>\pm 0.3</math></td></tr> <tr><td>2 PLC</td><td><math>\pm 0.3</math></td></tr> <tr><td>3 PLC</td><td><math>\pm 0.3</math></td></tr> <tr><td>4 PLC</td><td><math>\pm 0.3</math></td></tr> <tr><td>ANGLES</td><td><math>\pm 0.3^{\circ}</math></td></tr> <tr><td>FINISH</td><td><math>\pm 3^{\circ}</math></td></tr> </table>		0 PLC	$\pm 0.3$	1 PLC	$\pm 0.3$	2 PLC	$\pm 0.3$	3 PLC	$\pm 0.3$	4 PLC	$\pm 0.3$	ANGLES	$\pm 0.3^{\circ}$	FINISH	$\pm 3^{\circ}$	PRODUCT SPEC	SIZE: CAGE CODE DRAWING NO	
0 PLC	$\pm 0.3$																	
1 PLC	$\pm 0.3$																	
2 PLC	$\pm 0.3$																	
3 PLC	$\pm 0.3$																	
4 PLC	$\pm 0.3$																	
ANGLES	$\pm 0.3^{\circ}$																	
FINISH	$\pm 3^{\circ}$																	
MATERIAL		APPLICATION SPEC	RESTRICTED TO															
		WEIGHT	A100779C=2237067															
		CUSTOMER DRAWING	SCALE: NTS	SHEET 2 OF 2 REV: B2														