

## Spindle Operated Potentiometers

### Type LC1 Series

#### Type LC1 Series



A very popular range is this 13mm diameter spindle operated potentiometer family. The LC1 Series has a cermet resistance element. This technology provides excellent electrical and thermal stability, reliability, low noise and long life, to meet most professional or military applications for small size potentiometers. Recent changes have meant that the LC type is no longer released to BS CECC specification.

#### Key Features

- Rugged Terminations
- Panel Sealed
- Designed To Mil Standard
- Proven Reliability
- 1W Rating At 70°C
- Low Noise
- Cermet Element

#### Characteristics - Electrical

Resistance Values and Law:	100R to 1M Linear
Selection Tolerance:	± 10%
Rated Dissipation at 70°C:	1W
Limiting Element Voltage:	315V DC
Isolation Voltage:	450V DC
Electrical Rotation:	260°
Terminal Resistance:	<50 Ohms
Noise (ENR):	3% maximum
Insulation Resistance:	>5 G Ohms
Voltage Proof:	630V AC peak

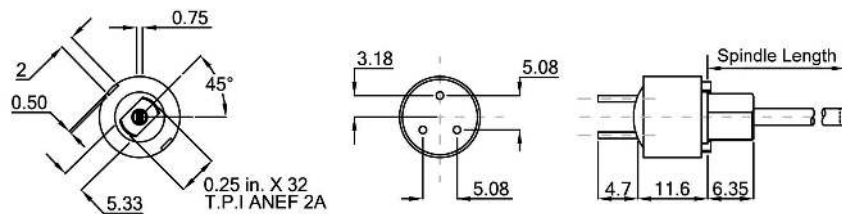
#### Characteristics - Mechanical

Starting Torque:	5 - 20 mNm
Mechanical Torque:	295° ± 5°
End Stop Torque:	>225 mNm

#### Characteristics - Environmental

Limits of Resistance Change:	± 3% (after 1000 hours)
TCR (20°C to 70°C):	<0.75%
Bump Severity:	390m/s <sup>2</sup> , 4000 Bumps
Vibration Severity:	10 - 500Hz, 0.75mm or 98m/s <sup>2</sup>
Climatic Category:	55/125/56
Mechanical Endurance:	25000 Operations minimum

#### Dimensions



#### Approvals

The LC1 meets military specifications similar to MIL-R-94C style RV6 and MIL-R-23285 style REC6.

#### How to Order

LC1	10K	10%	16mm	PL
<b>Common Part</b>	<b>Resistance Value</b>	<b>Tolerance</b>	<b>Spindle Length</b>	<b>Spindle Style</b>
LC1 - Spindle Operated Potentiometer	100R 10K 220R 22K 470R 47K 1K 100K 2K2 220K 4K7 470K	10% 20%	i.e 16mm 1 1/2"	PL - Plain SL - Slotted FL - Flatted