

4

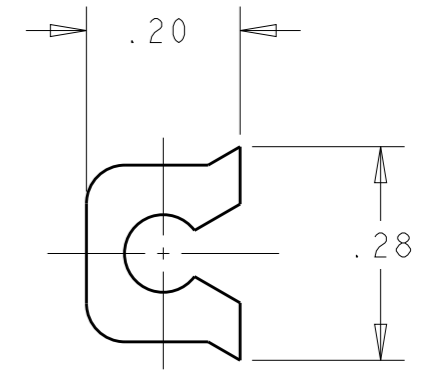
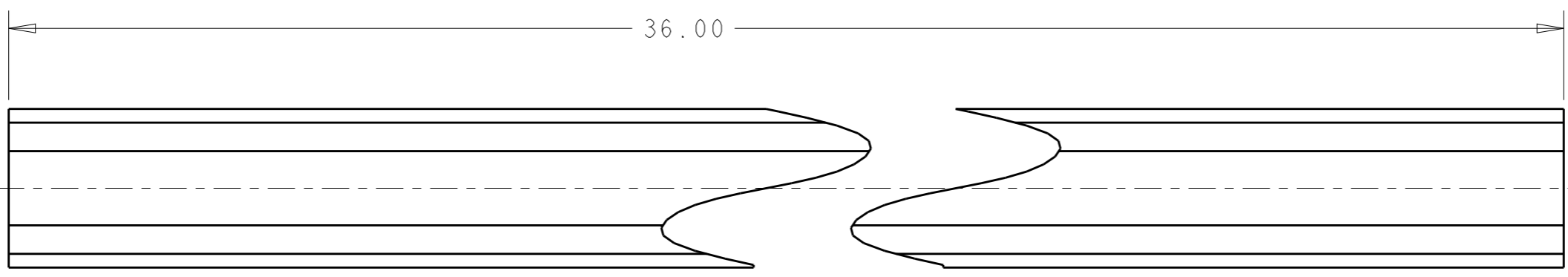
3

2

1

THIS DRAWING IS UNPUBLISHED. RELEASED FOR PUBLICATION 20
 © COPYRIGHT 20 BY TYCO ELECTRONICS CORPORATION. ALL RIGHTS RESERVED.

LOC	DIST	REVISIONS			
P	LTR	DESCRIPTION	DATE	DWN	APVD
GP	00	B	REVISED ECO-15-003059	26FEB2015	LAW EW



- PART NUMBER CHANGES AND/OR DESIGN CHANGES AFFECTING ITEM INTERCHANGEABILITY REQUIRE PRIOR TYCO ELECTRONICS APPROVAL AND AUTHORIZATION BY REVISION TO THIS DRAWING.
- ITEMS PROVIDED TO THIS SPECIFICATION TO BE PERMANENTLY IDENTIFIED ON THE CONTAINER PER THE FOLLOWING IDENTIFIER:

TYCO ELECTRONICS P/N: XXXXXXXX-X
 DATE CODE (e.g. 0212): YEAR 1 WEEK 1
XXXX

- 3 MATERIAL: ALUMINUM ALLOY
- 4 FINISH: BRASS ANODIZED

AS SHOWN	1648990-1
DESCRIPTION	PART NO.

<small>THIS DRAWING IS A CONTROLLED DOCUMENT FOR TYCO ELECTRONICS CORPORATION. IT IS SUBJECT TO CHANGE AND THE CONTROLLING ENGINEERING ORGANIZATION SHOULD BE CONTACTED FOR THE LATEST REVISION.</small>		DWN R. GRZYBOWSKI 9 JUNE 08 CHK D. ORRIS 9 JUNE 08 APVD S. FLICKINGER 9 JUNE 08		Tyco Electronics Harrisburg, PA 17105-3608	
DIMENSIONS: INCHES 		TOLERANCES UNLESS OTHERWISE SPECIFIED: 0 PLC ±- 1 PLC ±- 2 PLC ±.02 3 PLC ±.010 4 PLC ±- ANGLES ±-		NAME: RAIL, LOCKING DOMINO 3 FOOT LENGTH	
MATERIAL: <u>3</u>		FINISH: <u>4</u>		PRODUCT SPEC: - APPLICATION SPEC: - WEIGHT: -	
ELCON DOMINO		CUSTOMER DRAWING		SIZE: A3 CAGE CODE: 00779 DRAWING NO: 1648990 RESTRICTED TO: -	
SCALE: 4:1				SHEET 1 OF 1 REV B	