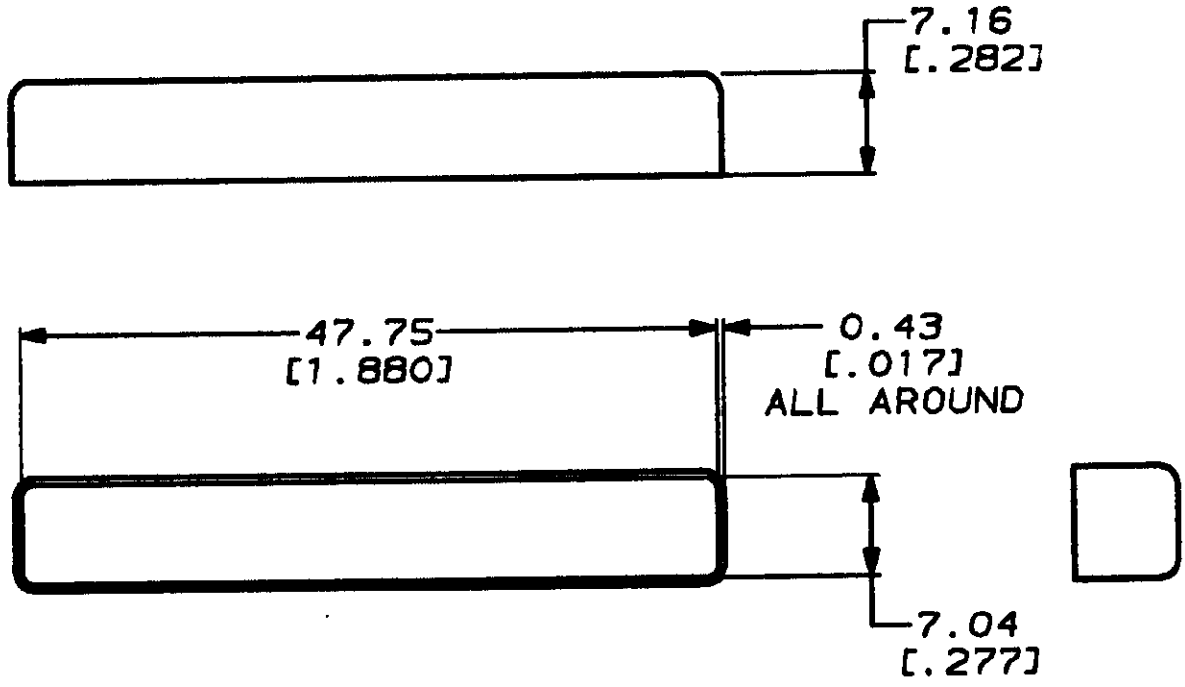


THIS DRAWING IS A CONTROLLED DOCUMENT FOR AMP INCORPORATED.
 IT IS SUBJECT TO CHANGE AND THE CONTROLLING ENGINEERING
 ORGANIZATION SHOULD BE CONTACTED FOR THE LATEST REVISION.

DRAWING MADE IN THIRD ANGLE PROJECTION

LOC		DIST		REVISIONS			
LTR	DESCRIPTION	DATE	APPROVED				
BD	95	P	F	0	RELEASED WAS 92-4640-8-1, NPR 4338	08/02/92	TS

THIS DRAWING IS UNPUBLISHED. BY AMP INCORPORATED. ALL INTERNATIONAL RIGHTS RESERVED. © COPYRIGHT 19



786531-1
PART NO

DO NOT SCALE PRINT. UNLESS SPECIFIED DIMENSIONS IN mm (IN) TOLERANCES ON: Ø PLC DEC ± 0.13 (.005) Ø PLC DEC ± - ANGLES ± -
MATERIAL RED POLYSTYRENE
FINISH -

DR 08/02/92 J. McCLINTON
CHK 9-15-92 R STONE
APPD 9-21-92 T SPANGLER
APPD 9-21-92 J ASSINI
PRODUCT SPEC -
APPLICATION SPEC -
WEIGHT -

AMP AMP Incorporated Harrisburg, PA 17105-3608		
NAME DUST COVER, .025 \downarrow PLUG, .050 SERIES AMPLIMITE™		
SIZE A	CAGE CODE 00779	DRAWING NO C=786531
SCALE 2:1	SHEET 1 of 1	