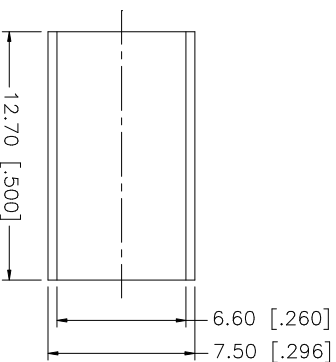
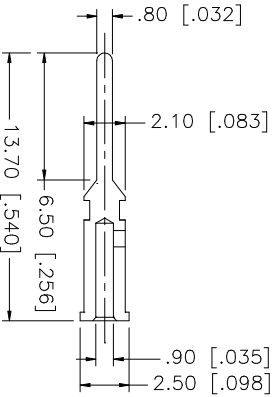
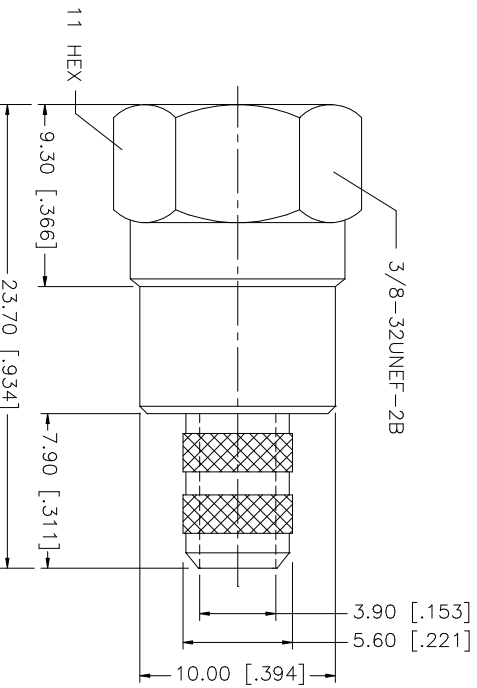
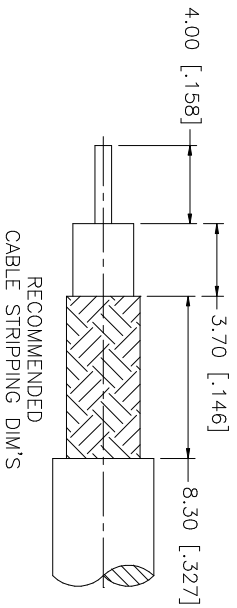


REV.	DATE	DESCRIPTION
A	03/06/03	UPDATE DRAWING FORMAT



NOTE:
 1. CRIMPED FERRULE
 HEX CRIMP SIZE ".255"
 2. CRIMPED CONTACT PIN
 HEX CRIMP SIZE ".068"

QTY	FINISH	MATERIAL	DESCRIPTION
1	NICKEL	BRASS	FERRULE
1	NICKEL	BRASS	BARREL
1	GOLD	BRASS	CONTACT PIN
1	NATURAL	DELRIN	INSULATOR
1	NICKEL	BRASS	SHELL/BODY

DATE	APPROVALS	CAD FILE
03/06/03	G.R.S.	C:/222/222119.DWG

DATE	DESCRIPTION
222119	F CRIMP PLUG (FOR RG-59/U 20AWG - BELDEN 9100)

REV.	SIZE	SCALE
A	A	NA

Amphenol Connex

PART DESCRIPTION

F CRIMP PLUG

(FOR RG-59/U 20AWG - BELDEN 9100)

PART NO. 222119

DWG. NO. 222119.DWG

REV. A

SIZE A

SCALE NA

UNLESS OTHERWISE SPECIFIED DIMENSIONS ARE IN MILLIMETERS. DIMENSIONS IN [] ARE IN INCHES AND FOR CUSTOMER REFERENCE ONLY.
 UNLESS OTHERWISE SPECIFIED TOLERANCES FOR MILLIMETERS ARE:
 0.5 - 8mm ± 0.20mm
 8 - 30mm ± 0.40mm
 30 - 120mm ± 0.50mm
 UNLESS OTHERWISE SPECIFIED TOLERANCES FOR INCHES ARE:
 .020 - .315 = ± 0.007"
 .315 - 1.180 = ± 0.015"
 1.180 - 4.724 = ± 0.020"
 DO NOT SCALE DRAWING