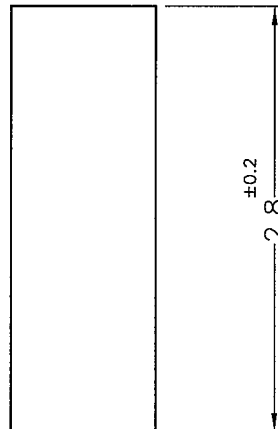
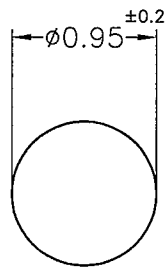
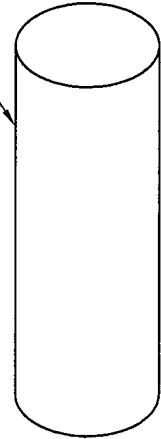


ALL SURFACE POLISHING



NOTE: MADE OF EQUIVALENT MATERIAL.
均可使用同等材質。



康揚企業股份有限公司
KANG YANG HARDWARE ENTERPRISE CO., LTD.
康揚塑膠(東莞)有限公司
KANG YANG PLASTIC(DONG GUAN)CO.,LTD.
康哲電腦配件(吳江)有限公司
KANG CHE COMPUTER COMPONENTS(WUJIANG)CO.,LTD.

ISO 9001
ISO 14001
QC 080000
IATF 16949

| | | | | | | | | | |
|---|----------|------------|---|-------------|-------------|---------|------------|--------------|---|
| PROPRIETARY AND CONFIDENTIAL THE INFORMATION CONTAINED IN THIS DRAWING IS THE SOLE PROPERTY OF KANG YANG HARDWARE ENTERPRISE CO. ANY REPRODUCTION IN PART OR AS A WHOLE WITHOUT THE WRITTEN PERMISSION OF KANG YANG HARDWARE ENTERPRISE CO. IS PROHIBITED. DO NOT SCALE DRAWING | DATE | 2020.07.01 | TITLE | LIGHT PIPE | DWG. NO. | LEM-261 | PART NO. | LEM-261 | |
| | DRAWN | FORSEN | MATERIAL | PC UL94V-2 | | | | | |
| | CHECKED | | COLOR | TRANSPARENT | FINISH | | | REV | A |
| | APPROVED | | UNLESS OTHERWISE SPECIFIED TOLERANCE: SEE ABOVE | | SIZE | A4 | SPEC. DWG. | | |
| | | | | | SCALE: 20:1 | UNIT | mm | SHEET 1 OF 1 | |