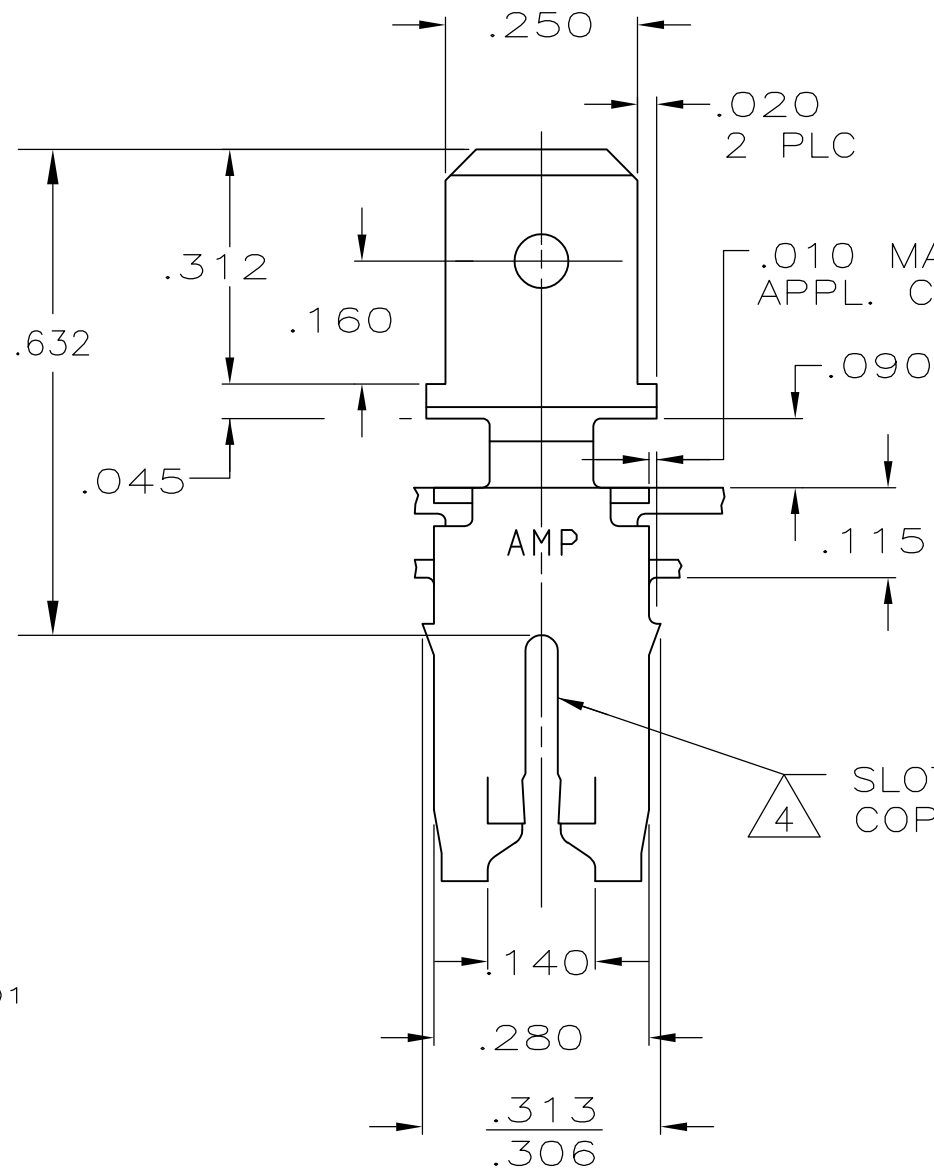
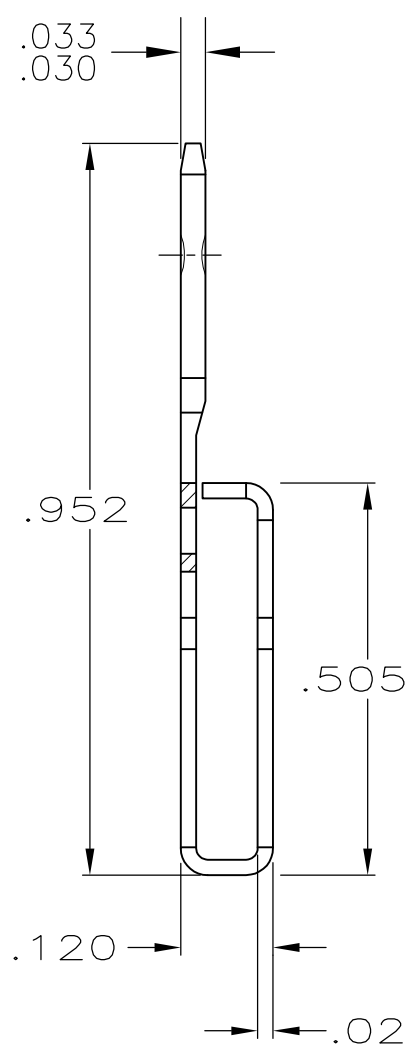
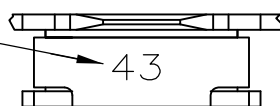


THIS DRAWING IS UNPUBLISHED. RELEASED FOR PUBLICATION
 © COPYRIGHT BY TYCO ELECTRONICS CORPORATION. ALL INTERNATIONAL RIGHTS RESERVED.

| LOC | DIST | REVISIONS | | | |
|-----|------|---------------------------|---------|-----|------|
| P | LTR | DESCRIPTION | DATE | DWN | APVD |
| AF | 50 | | | | |
| | C1 | REVISED PER ECR-09-002564 | 12FEB09 | HMR | KR |
| | D | ECR-13-008483 | 06AUG13 | XJ | DZ |

IDENTIFICATION NUMBER FOR MAGNET WIRE RANGE



- 1 MAG-MATE CAVITY SPECIFICATION
- 2 CONTINUOUS STRIP ON REELS WITH TERMINALS LOCATED ON .330 CENTERS.
- 3 AFTER INSERTION INTO PLASTIC HOLDER, TAB PORTION MUST BE BENT OVER 45° TO 90° OR POTTED-IN TO PREVENT PULL-OUT WHEN MATING RECEPTACLE IS DISCONNECTED.
- 4 TWO #14-13.5 COPPER MAGNET WIRES ACCEPTABLE AT CAVITY ANVIL HEIGHT OF .155-.165.

4 SLOT ACCEPTS #13-#14 COPPER MAGNET WIRE

63465-1
PART NO

| | | | | | |
|--|--|------------------------------|---|--------------|-----------------|
| THIS DRAWING IS A CONTROLLED DOCUMENT. | | DWN M.S. FEHER 4/21/87 | Tyco Electronics Corporation Harrisburg, PA 17105-3608 | | |
| DIMENSIONS: INCHES | TOLERANCES UNLESS OTHERWISE SPECIFIED: | CHK G YETTER 4/21/87 | NAME | | |
| | | APVD J SWARTZ 4/21/87 | TAB, .250 FASTON,™ MAG-MATE™ | | |
| MATERIAL #4H PRE-MILLED BRASS | FINISH TIN PLATE | PRODUCT SPEC | SIZE | CAGE CODE | DRAWING NO |
| | | APPLICATION SPEC | 114-2066 | A300779 | C-63465 |
| CUSTOMER DRAWING | | | RESTRICTED TO | SCALE 4:1 | SHEET 1 OF 1 |