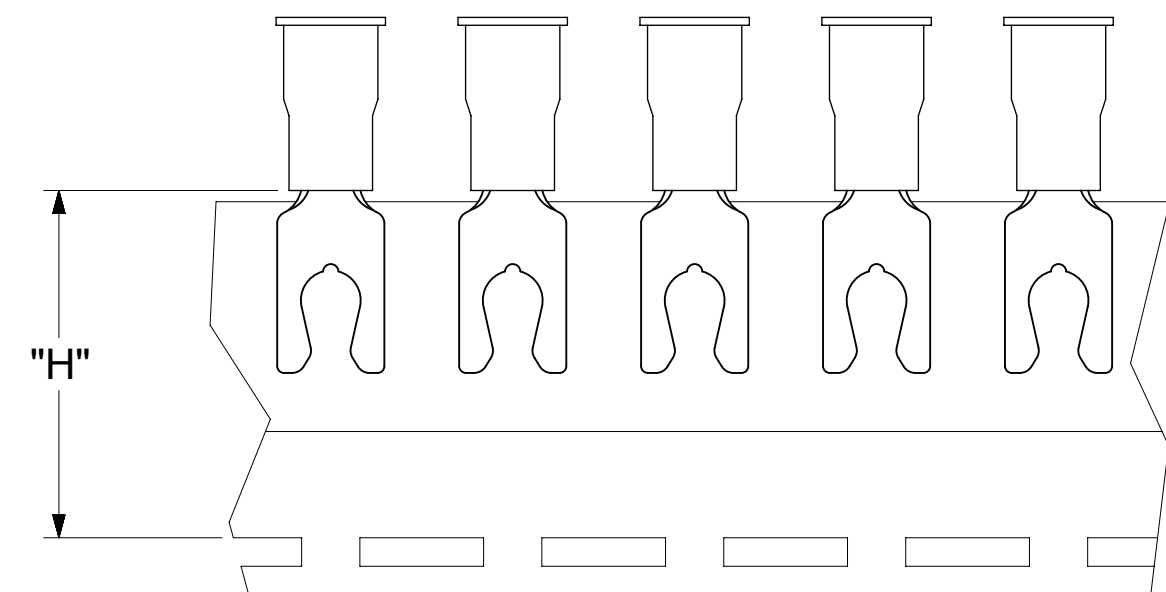
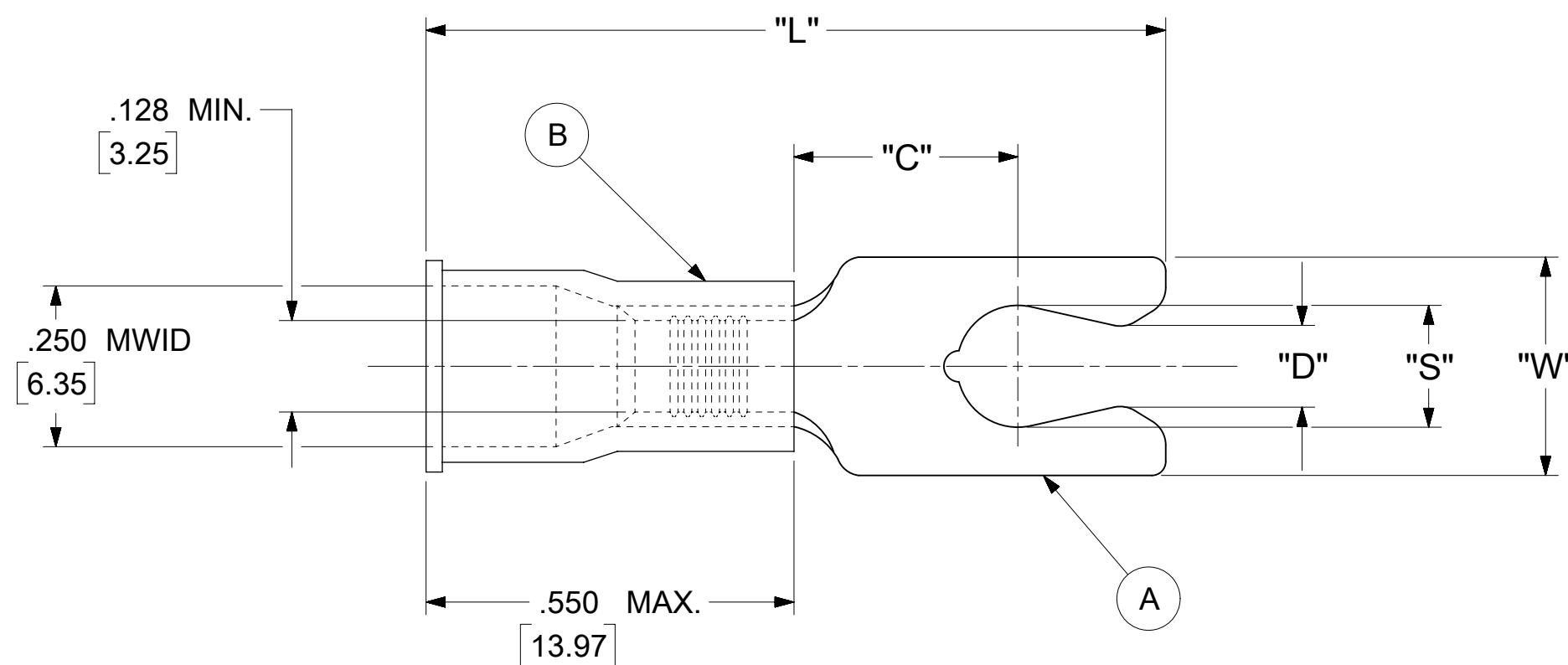


LOOSE PIECE		TAPE MOUNTED		SPECIFICATIONS						
MATERIAL NUMBER	ENGINEERING NUMBER	MATERIAL NUMBER	ENGINEERING NUMBER	STUD SIZE	"S" ±.005 [0.13]	"W" ±.010 [0.25]	"C" MIN.	"L" MAX.	"D" ±.005 [0.13]	"H"
190990048	C-2718-08X	190990049	C-2718-08XT	8	.173 [4.39]	.310 [7.87]	.261 [6.63]	1.016 [25.81]	.139 [3.53]	.980 [24.89]
190990050	C-2719-10X	190990051	C-2719-10XT	10	.198 [5.03]	.330 [8.38]	.261 [6.63]	1.064 [27.03]	.156 [3.96]	.980 [24.89]



NOTES:

- MATERIAL:
 - (A). TERMINAL: COPPER (STOCK THICKNESS .040±.001 [1.02])
PLATING: ELECTRO-TIN (.0003 MIN.)
 - (B). INSULATION: MOLDED PVC (YELLOW)
- MWID: MAXIMUM WIRE INSULATION DIAMETER
- WIRE SIZE: 12 -10 AWG
4.0 -6.0 MM²
- "UL" LISTING #E32244
"CSA" LISTING #18689
- ALL DIMENSIONS IN INCHES/[MM].
- PARTS ARE ROHS COMPLIANT.
- DIMS. SHOWN ARE FOR REFERENCE ONLY.

SYMBOLS	THIS DRAWING CONTAINS INFORMATION THAT IS PROPRIETARY TO MOLEX ELECTRONIC TECHNOLOGIES, LLC AND SHOULD NOT BE USED WITHOUT WRITTEN PERMISSION	
	DIMENSION UNITS	SCALE
∇ = 0	INCH/MM	NTS
∇ = 0	GENERAL TOLERANCES (UNLESS SPECIFIED)	
∇ = 0	MM	INCH
S = 0	4 PLACES	± --- ± ---
∇ = 0	3 PLACES	± --- ± .005
∇ = 0	2 PLACES	± 0.13 ± .01
∇ = 0	1 PLACE	± 0.25 ± ---
∇ = 0	0 PLACES	± --- ± ---
∇ = 0	ANGULAR TOL	± 0.5 °
∇ = 0	DRAFT WHERE APPLICABLE MUST REMAIN WITHIN DIMENSIONS	THIRD ANGLE PROJECTION
∇ = 0		DRAWING SERIES
		C-SIZE 19099
	CURRENT REV DESC: MIGRATION TO ECTR/NX	
	EC NO: 620958	
	DRWN: ABENJAMINLW	2019/07/17
	CHK'D: GROJAS01	2019/07/19
	APPR: JMACNEIL	2019/08/05
	INITIAL REVISION:	
	DRWN: GZ	1985/04/05
	APPR: JMACNEIL	2019/08/05
	DOCUMENT NUMBER	DOC TYPE DOC PART REVISION
	190990048	PSD 000 A
	MATERIAL NUMBER	CUSTOMER
	SEE TABLE	GENERAL MARKET
		SHEET NUMBER
		1 OF 1