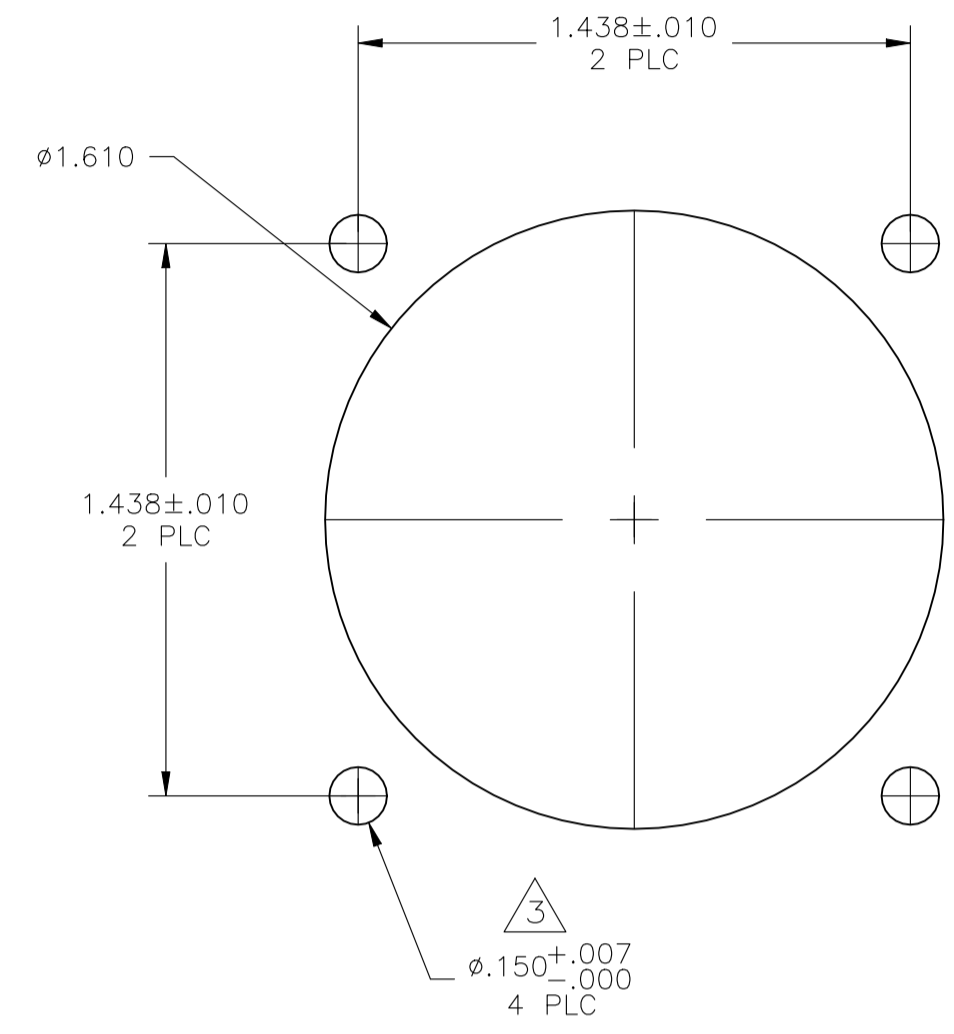
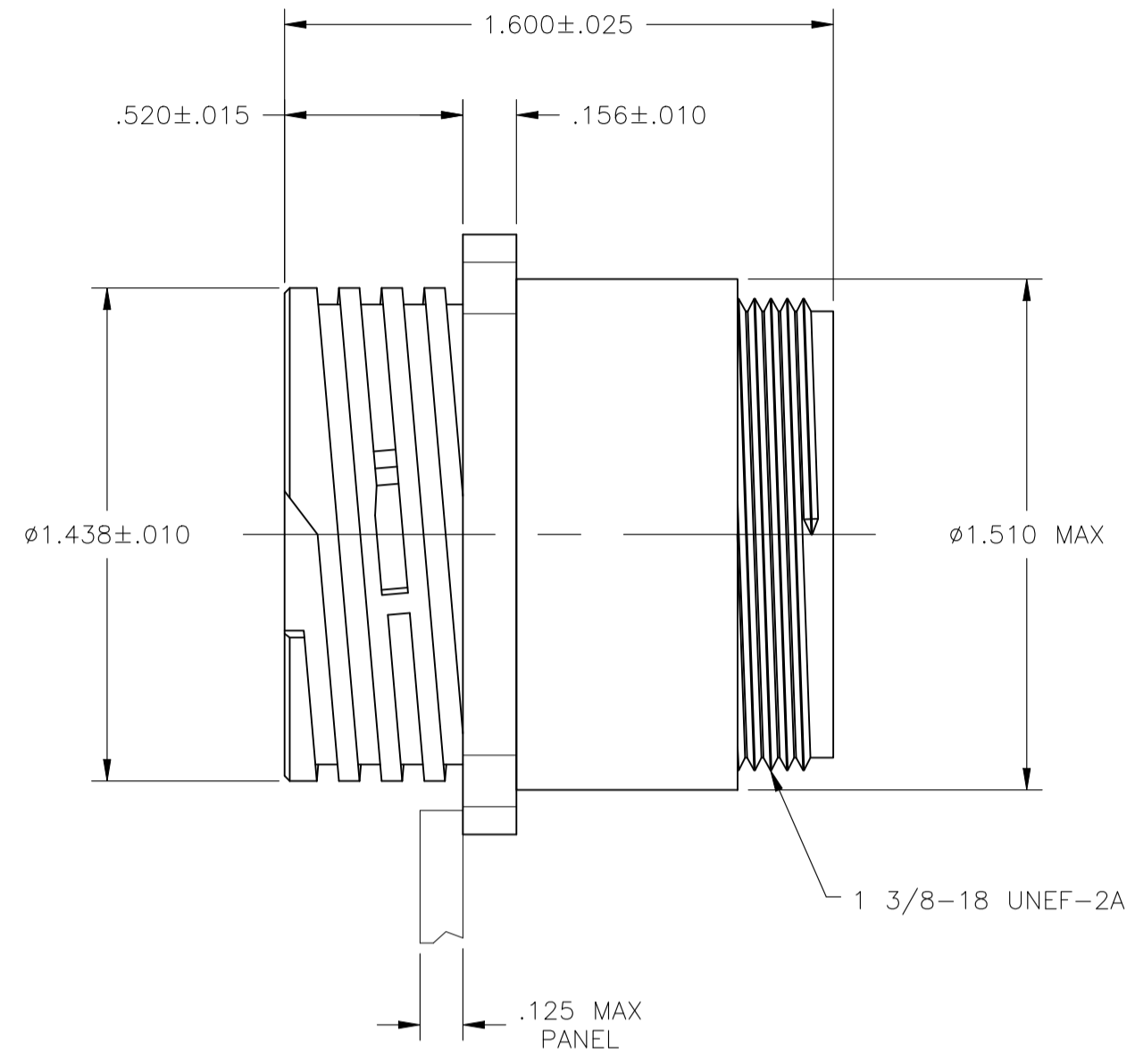
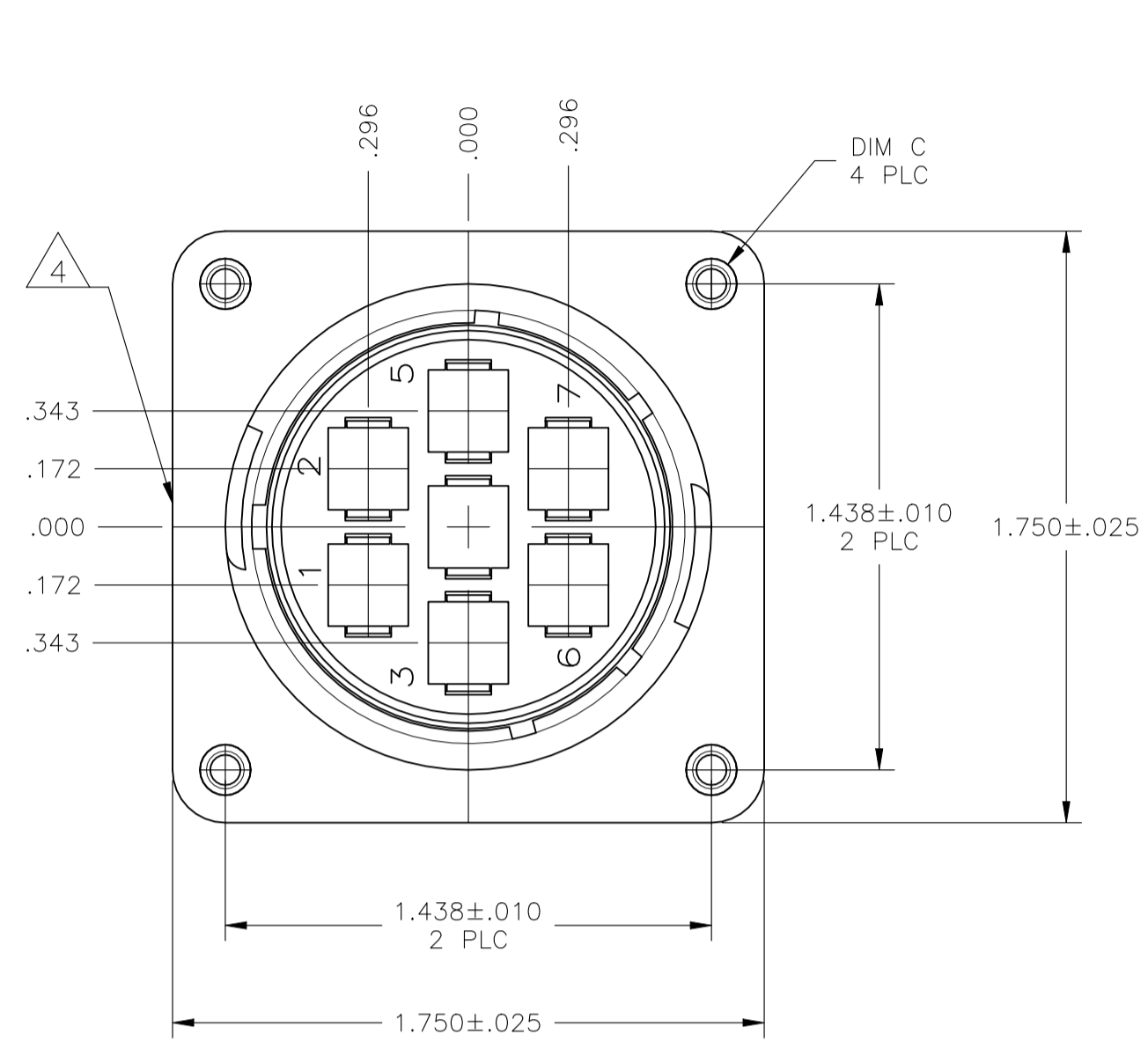


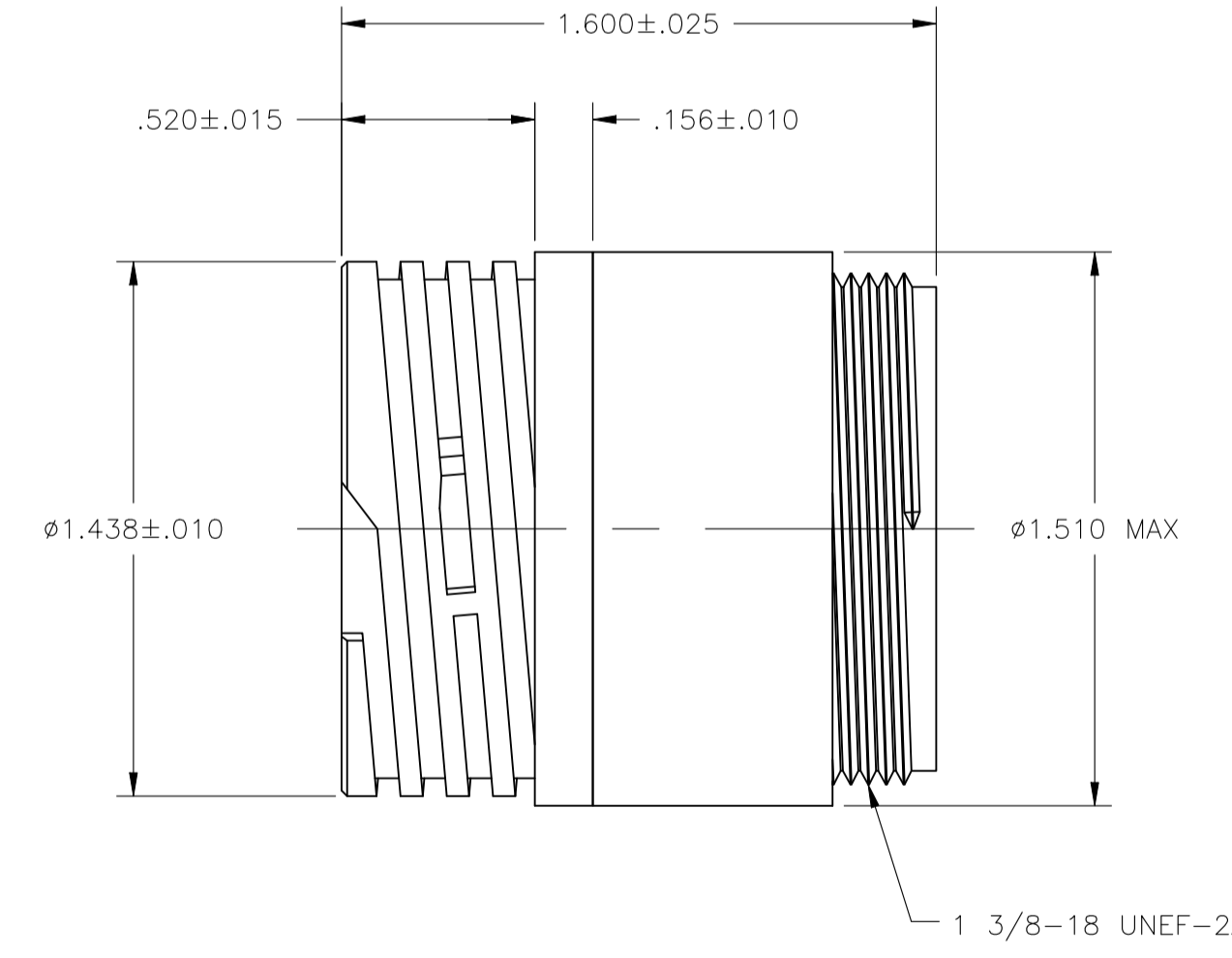
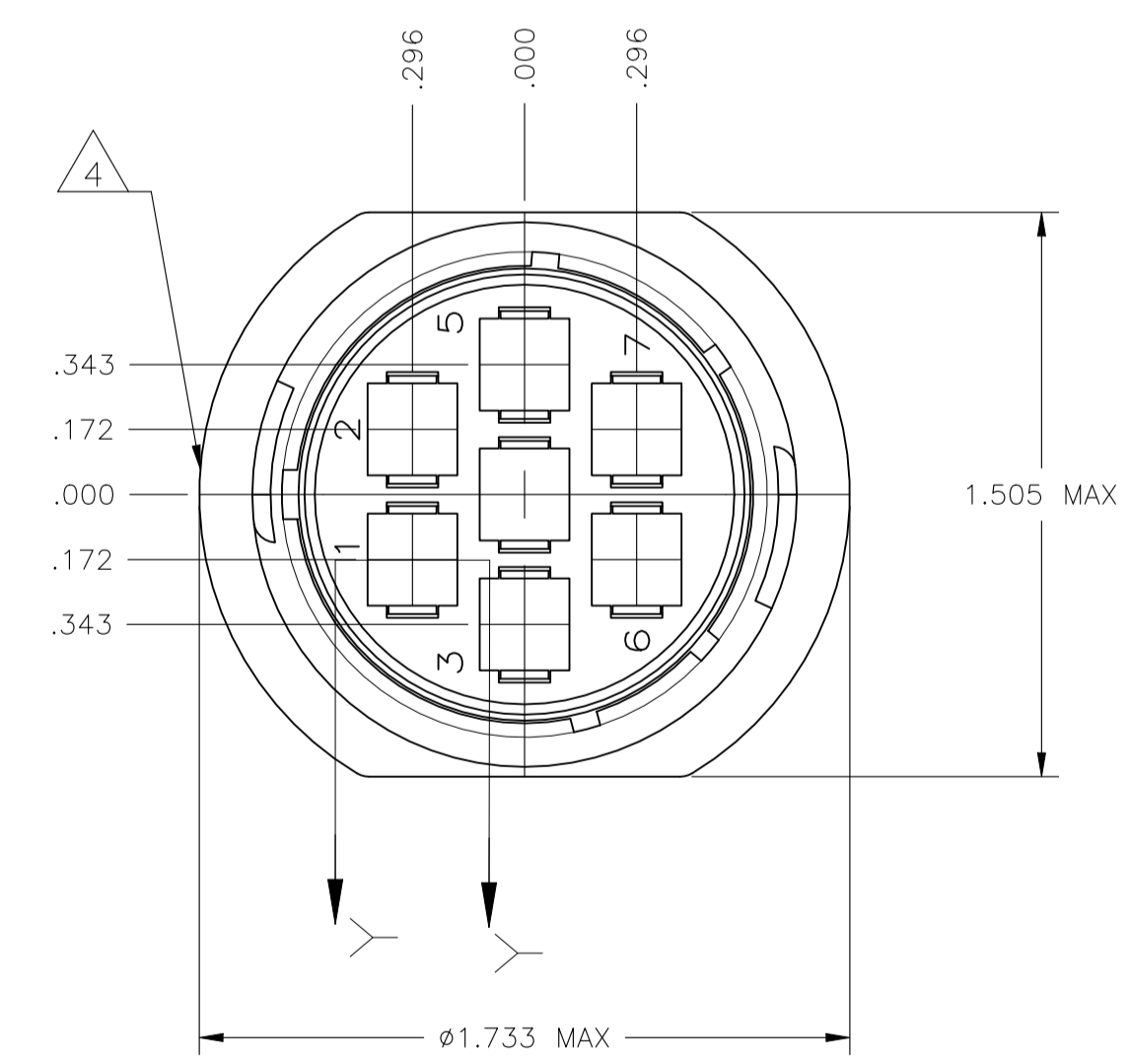
REVISIONS					
P	LTR	DESCRIPTION	DATE	DN	APVD
N		REVISED PER ECO-21-006945	27OCT2021	RK	MZ

- NOTES:**
1. CAVITY IDENTIFICATION ON FRONT AND REAR FACE.
 2. WILL ACCEPT SEVEN (7) TYPE XII PIN CONTACTS.
 3. #4 FASTENER RECOMMENDED FOR MOUNTING.
 4. TE LOGO AND PART NUMBER LOCATED ON ANY FLANGE EDGE



DETAIL A

RECOMMENDED PANEL CUTOUT



DETAIL B

4-40 THREADED INSERTS	A	206137-5
.150±.003	B	206137-2
.150±.003	A	206137-1
DIM C	SEE DETAIL	PART NUMBER

THIS DRAWING IS A CONTROLLED DOCUMENT.		DIN D.HARDY 05/31/94			
DIMENSIONS: INCHES		CIRK W.G.LENKER 06/07/94			
TOLERANCES UNLESS OTHERWISE SPECIFIED:		APVD		NAME	
0 PLC ± -		PRODUCT SPEC		RECEPTACLE HOUSING, STANDARD	
1 PLC ± -		APPLICATION SPEC		SEX, SHELL SIZE 23, CPC	
2 PLC ± .005		SIZE		CAGE CODE	
3 PLC ± -		DRAWING NO		RESTRICTED TO	
4 PLC ± -		WEIGHT		SCALE	
ANGLES ± -		A1 00779 C=206137		SHEET 1 of 1	
MATERIAL NYLON, BLACK		CUSTOMER DRAWING		REV N	