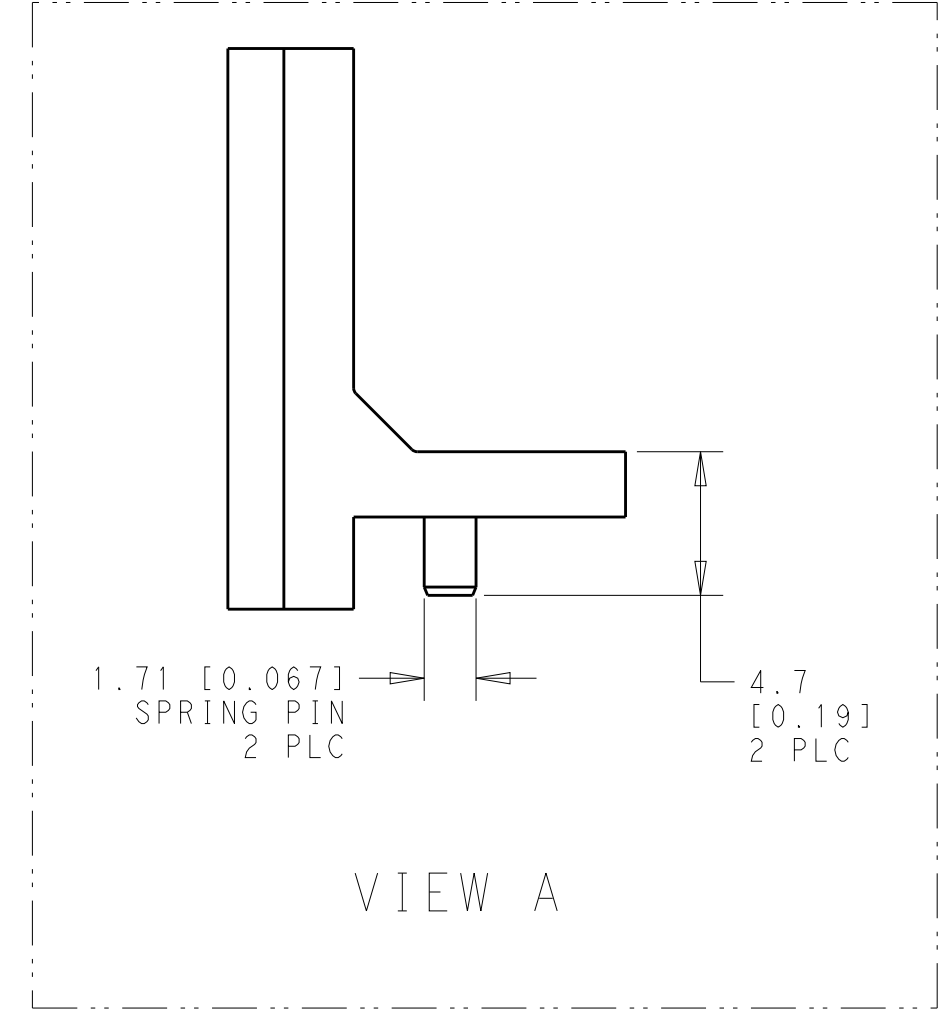
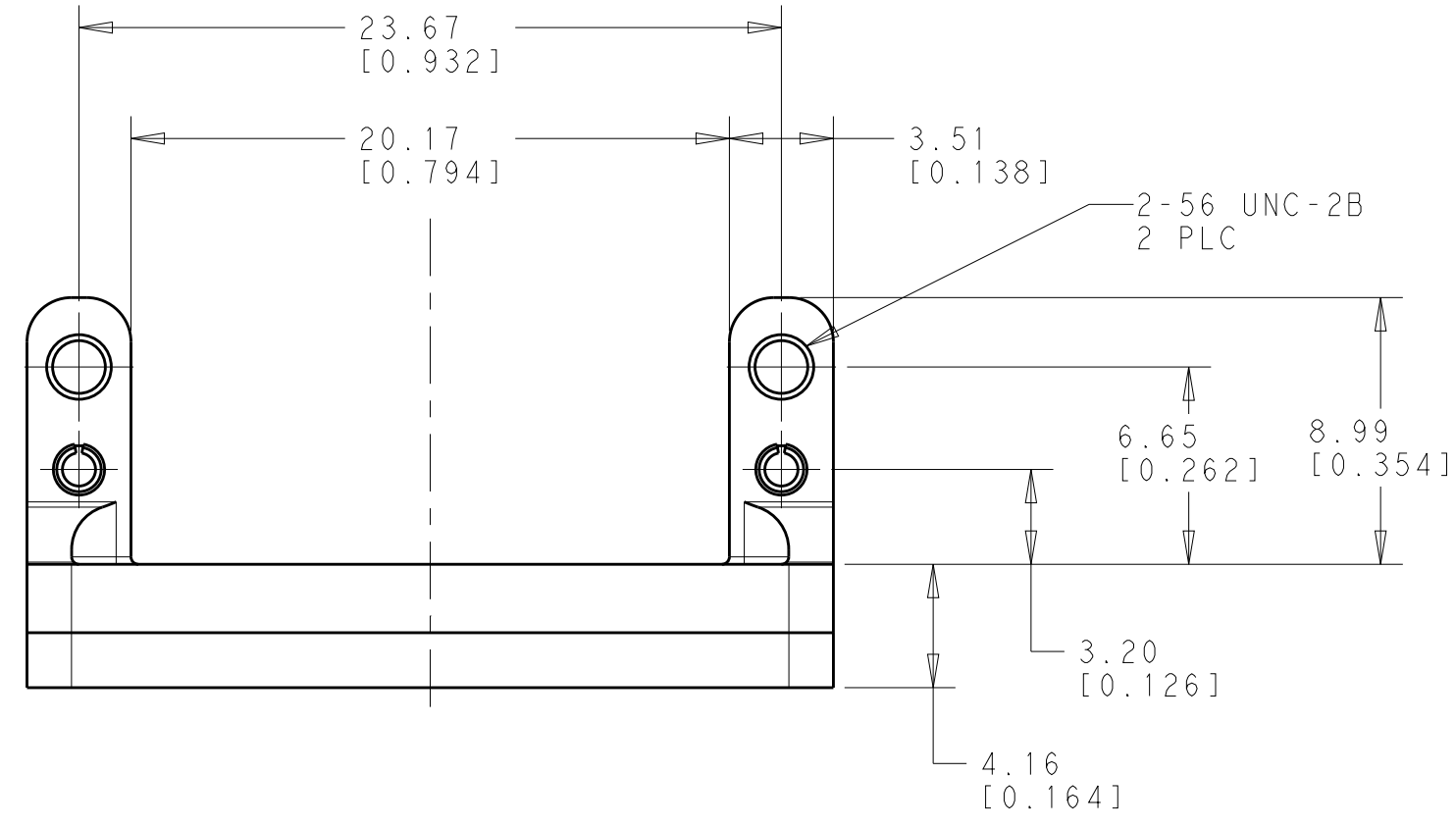
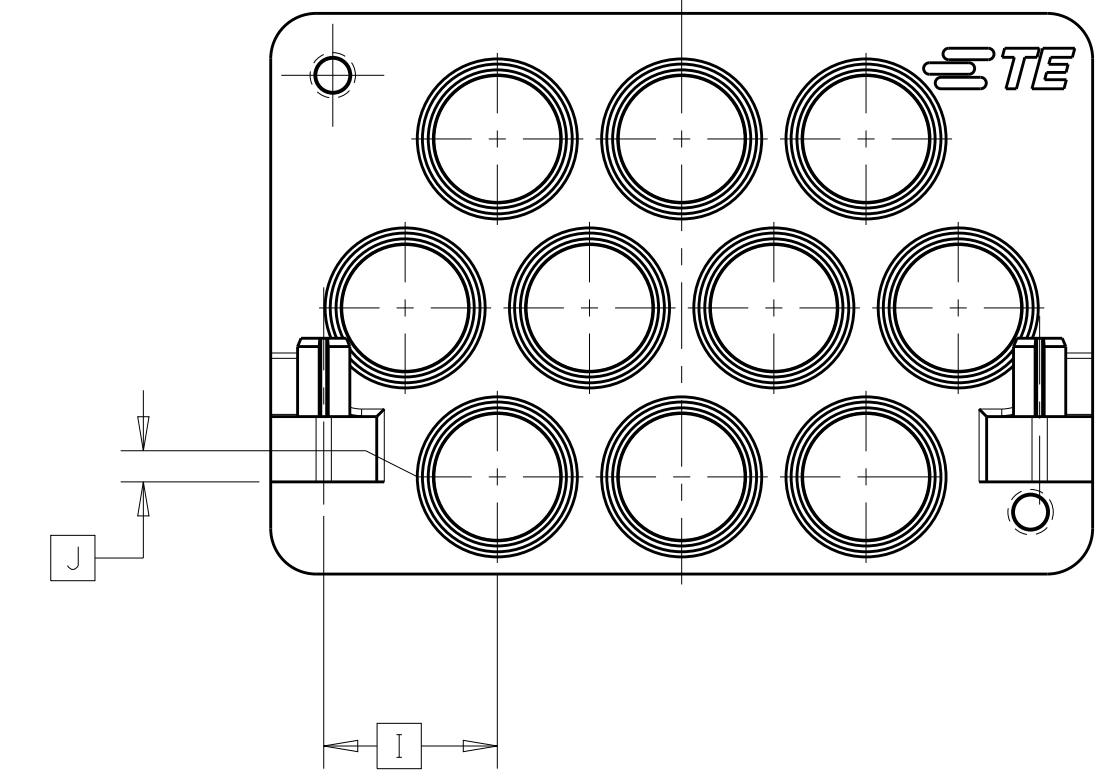
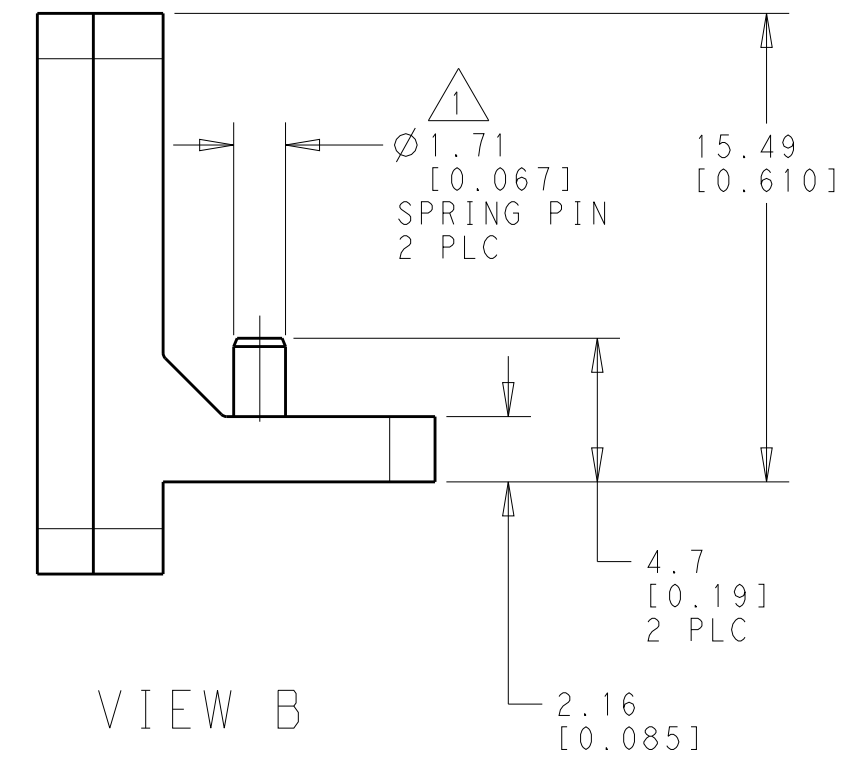
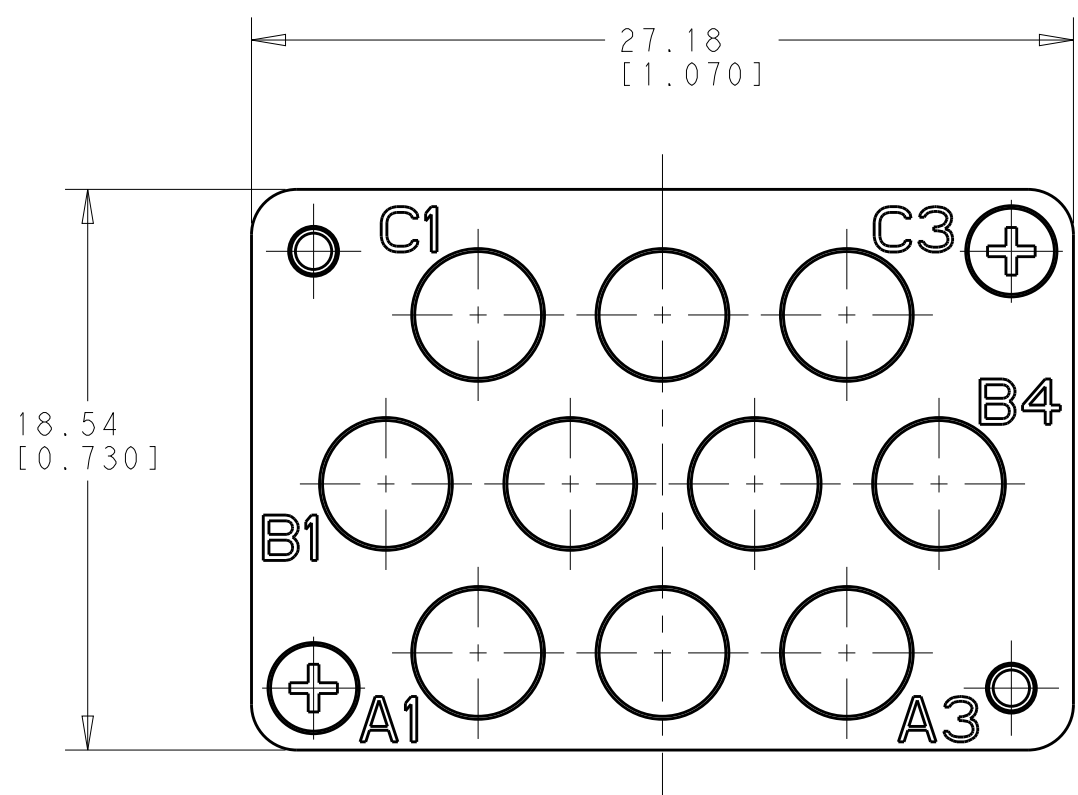


THIS DRAWING IS UNPUBLISHED. RELEASED FOR PUBLICATION 20  
 © COPYRIGHT 20 BY - ALL RIGHTS RESERVED.

REVISIONS					
P	LTR	DESCRIPTION	DATE	DWN	APVD
C		REV PER ECO 19-008968	7-8-19	CT	FB



HOLE CHART		
HOLE ID	I	J
A1	17.932 [.7060]	0.165 [.0065]
A2	11.836 [.4660]	0.165 [.0065]
A3	5.740 [.2260]	0.165 [.0065]
B1	20.980 [.8260]	5.753 [.2265]
B2	14.884 [.5860]	5.753 [.2265]
B3	8.788 [.3460]	5.753 [.2265]
B4	2.692 [.1060]	5.753 [.2265]
C1	17.932 [.7060]	11.341 [.4465]
C2	11.836 [.4660]	11.341 [.4465]
C3	5.740 [.2260]	11.341 [.4465]



△ PINS SHOWN IN AS-SHIPED STATE. PINS TO BE PRESSED FLUSH TO TOP OF MODULE FLANGE BY CUSTOMER DURING ASSEMBLY PROCESS.

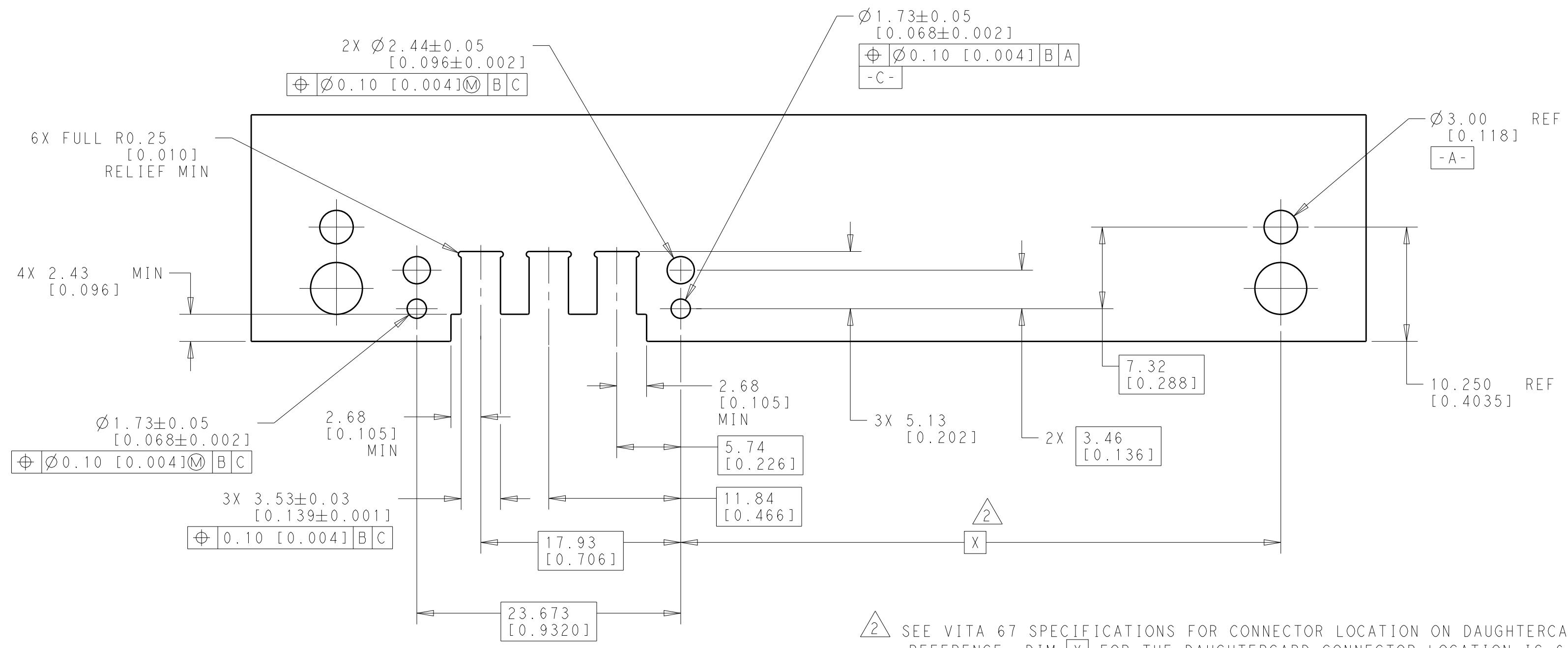
MATERIALS		
HOUSING FOR 2323863-1 & -2	STAINLESS STEEL PER ASTM A484 AND ASTM A582, TYPE 303	PASSIVATED
HOUSING FOR 2323863-3 & -4	ALUMINUM ALLOY 7075-T651	TRIVALENT CHROMATE CONVERSION COATING PER MIL-DTL-5541F, CLASS 1A, TYPE II
SPRING PIN COMPONENT	NICKEL STAINLESS STEEL MATERIAL	PASSIVATED FINISH

B	2323863-4
A	2323863-3
B	2323863-2
A	2323863-1
VIEW DETAIL	PART NUMBER

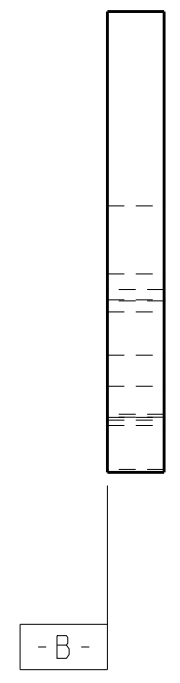
THIS DRAWING IS A CONTROLLED DOCUMENT.		DWN K. MILLER 29AUG2017	 TE Connectivity	NAME VITA 67.3 DAUGHTER CARD MODULE 10 POSN PER VITA 65.1 R6.4.5.6.3 FOR SMPM STRAIGHT CABLE PLUG		
DIMENSIONS: mm [INCHES]		CHK D. WILSON 29AUG2017		PRODUCT SPEC	SIZE	CAGE CODE
TOLERANCES UNLESS OTHERWISE SPECIFIED:		APVD D. WILSON 29AUG2017		APPLICATION SPEC	DRAWING NO	RESTRICTED TO
0 PLC ± 1 PLC ±0.5 [.02] 2 PLC ±0.13 [.005] 3 PLC ±0.013 [.0005] 4 PLC ± ANGLES ± FINISH ±		WEIGHT		-	A200779	C-2323863
MATERIAL		CUSTOMER DRAWING		SCALE	4:1	
				SHEET	1 OF 2	
				REV	C	

THIS DRAWING IS UNPUBLISHED. RELEASED FOR PUBLICATION 20  
 © COPYRIGHT 20 BY - ALL RIGHTS RESERVED.

REVISIONS				
P	LTR	DESCRIPTION	DATE	APVD
-	-	SEE SHEET 1	-	-



△ 2 SEE VITA 67 SPECIFICATIONS FOR CONNECTOR LOCATION ON DAUGHTERCARD PCB.  
 REFERENCE: DIM [X] FOR THE DAUGHTERCARD CONNECTOR LOCATION IS 6.76[.266]  
 LESS THAN DIM [X] FOR THE BACKPLANE CONNECTOR LOCATION.



THIS DRAWING IS A CONTROLLED DOCUMENT.		DWN K. MILLER 29AUG2017	TE Connectivity	
DIMENSIONS: mm [INCHES]		CHK D. WILSON 29AUG2017		
TOLERANCES UNLESS OTHERWISE SPECIFIED:		APVD -	NAME VITA 67.3 DAUGHTER CARD MODULE 10 POSN PER VITA 65.1 R6.4.5.6.3 FOR SMPM STRAIGHT CABLE PLUG	
0 PLC ±		PRODUCT SPEC	SIZE A200779	
1 PLC ±0.5[.02]		APPLICATION SPEC	CAGE CODE C-2323863	
2 PLC ±0.13[.005]		WEIGHT	DRAWING NO -	
3 PLC ±0.013[.0005]		CUSTOMER DRAWING	RESTRICTED TO -	
4 PLC ±		SCALE 3:1	SHEET 2 OF 2	
ANGLES ±		REV C		
FINISH -				