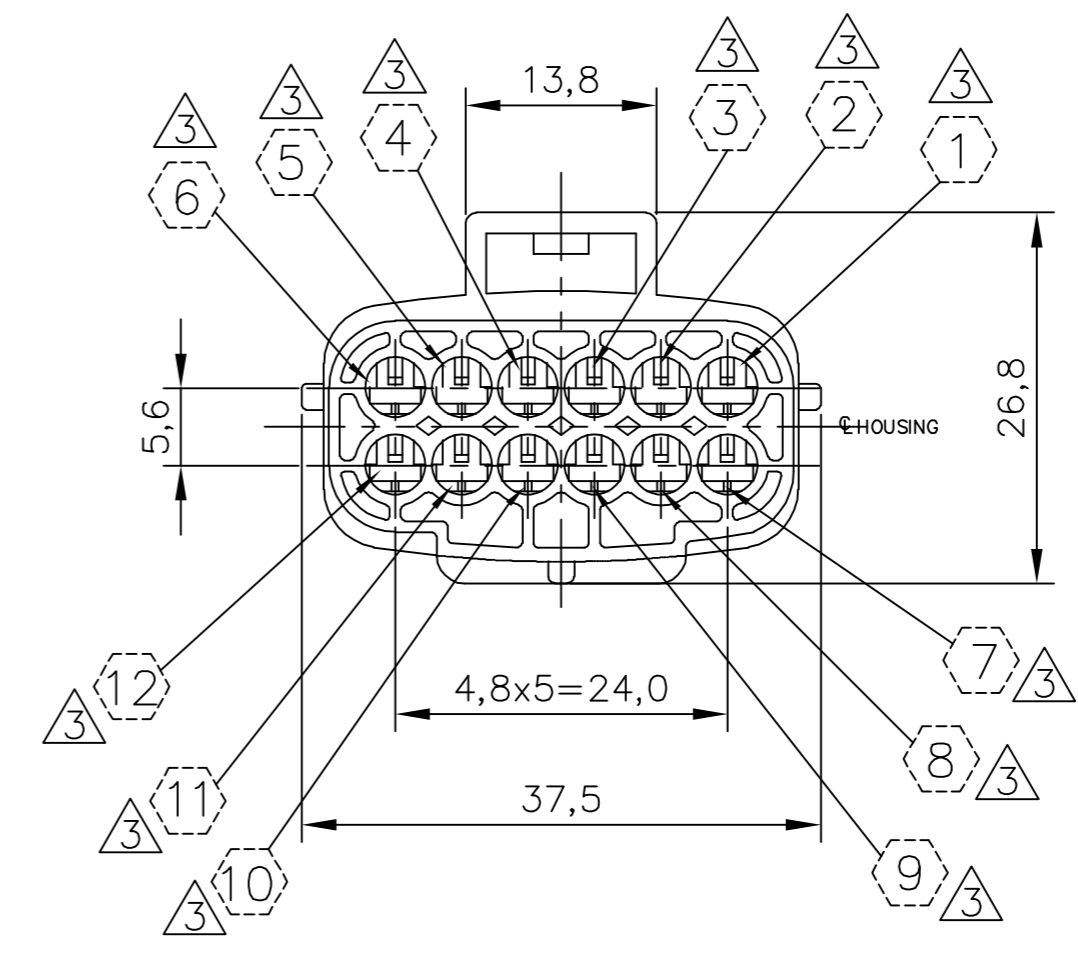
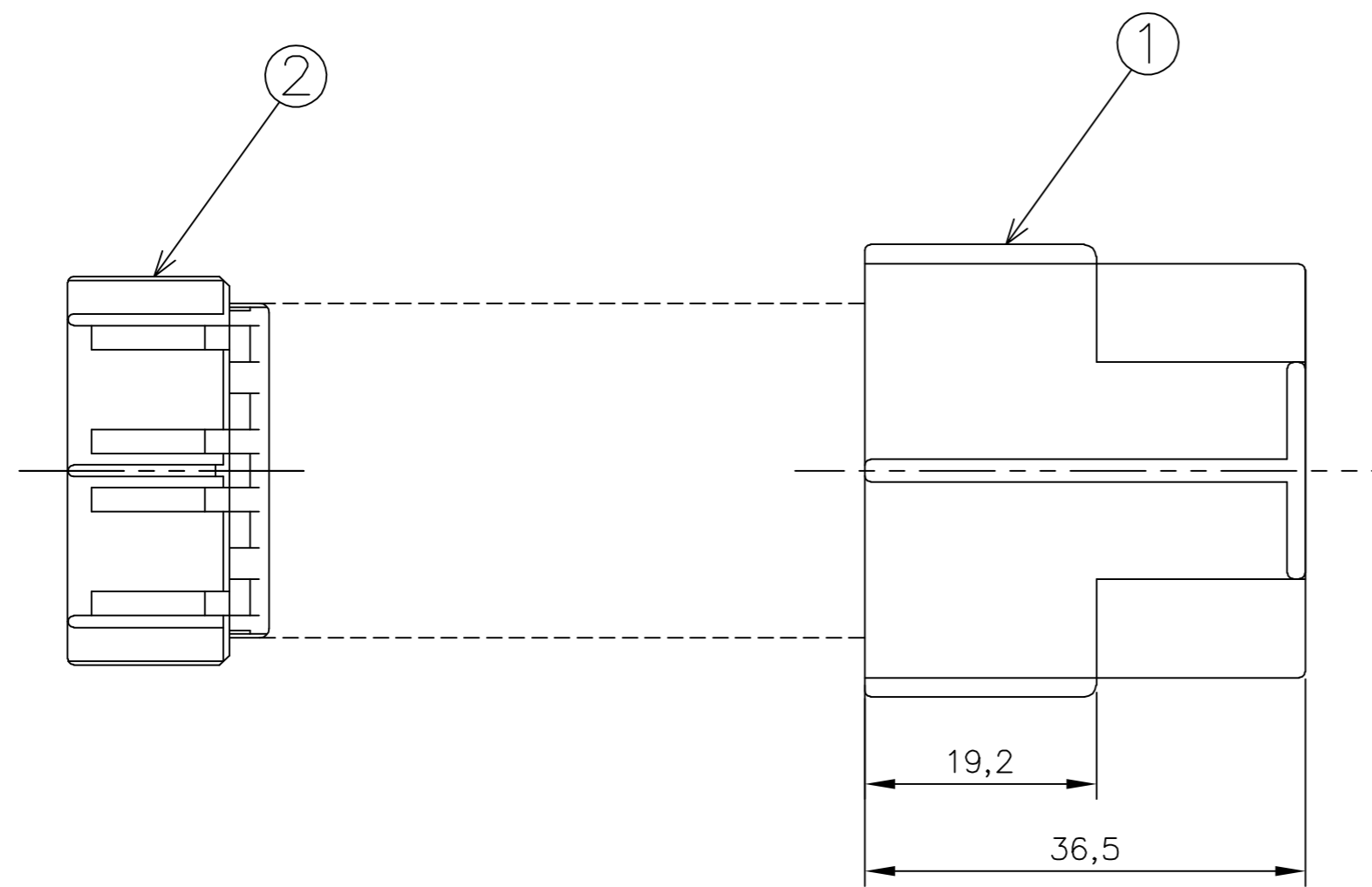
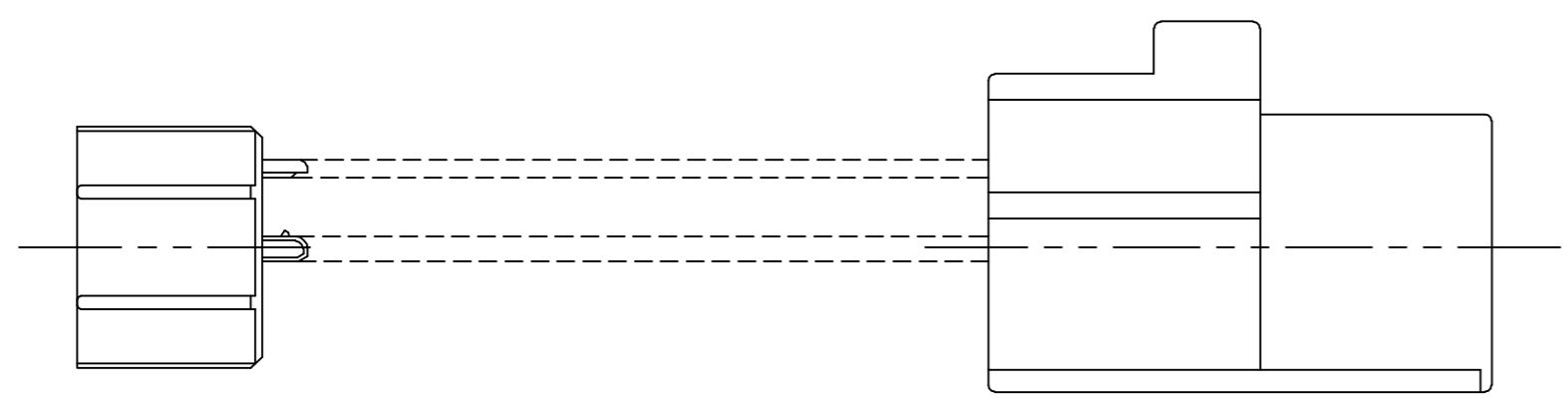


THIS DRAWING IS UNPUBLISHED. RELEASED FOR PUBLICATION  
 © COPYRIGHT - By - ALL RIGHTS RESERVED.

LOC		DIST		REVISIONS			
AP	-	P	LTR	DESCRIPTION	DATE	DWN	APVD
		B1		REVISED DESIGN ECO-12-009649	23MAY2012	NCL	GOJ



- 1 - OS ITENS 1 e 2 DEVEM SER FORNECIDOS DESMONTADOS  
ITEMS 1 AND 2 MUST BE SUPPLIED NOT ASSEMBLED
- 2 - CONTRA-PEÇA: VER DESENHO PN 444011  
COUNTER-PART: SEE DRAWING PN 444011

△ - INDICAÇÃO DOS CIRCUITOS ◯ SOMENTE ORIENTATIVO: NÃO CONSTAM COMO GRAVAÇÃO NA PEÇA FÍSICA  
 CIRCUIT INDICATION ◯ IS ONLY ORIENTATIVE: DON'T HAVE MARKING IN THE PHYSICAL PART

SELOS RECOMENDADOS RECOMMENDED WIRE SEALS					
172748-1	SINGLE WIRE SEAL	CAVITY PLUG	CAVITY PLUG	SILICONE / SILICON	PRETO/BLACK
172748-2	SINGLE WIRE SEAL	CAVITY PLUG	CAVITY PLUG	SILICONE / SILICON	CINZA/GRAY
444430-1	SINGLE WIRE SEAL	0,5 TO 1,5mm <sup>2</sup>	Ø 1,4 TO 2,4mm	SILICONE / SILICON	MARROM/BROWN
PART NUMBER	DESCRIÇÃO DESCRIPTION	WIRE RANGE	INSULATION RANGE	MATERIAL	ACABAMENTO FINISH

TERMINAIS RECOMENDADOS RECOMMENDED TERMINALS					
881590-1	TERMINAL 1.8 ECONOSEAL "J" SERIES MARKII TAB	0,5 TO 1,0mm <sup>2</sup>	Ø 1,4 TO 2,0mm	LATÃO/BRASS	PRÉ ESTANHADO/PRE TIN
881590-2	TERMINAL 1.8 ECONOSEAL "J" SERIES MARKII TAB	0,5 TO 1,0mm <sup>2</sup>	Ø 1,4 TO 2,0mm	BRONZE	PRÉ ESTANHADO/PRE TIN
881593-1	TERMINAL 1.8 ECONOSEAL "J" SERIES MARKII TAB	0,5 TO 1,0mm <sup>2</sup>	Ø 1,4 TO 2,4mm	LATÃO/BRASS	PRÉ ESTANHADO/PRE TIN
881593-2	TERMINAL 1.8 ECONOSEAL "J" SERIES MARKII TAB	0,5 TO 1,0mm <sup>2</sup>	Ø 1,4 TO 2,4mm	BRONZE	PRÉ ESTANHADO/PRE TIN
881594-1	TERMINAL 1.8 ECONOSEAL "J" SERIES MARKII TAB	1,0 TO 1,5mm <sup>2</sup>	Ø 1,4 TO 2,4mm	LATÃO/BRASS	PRÉ ESTANHADO/PRE TIN
881594-2	TERMINAL 1.8 ECONOSEAL "J" SERIES MARKII TAB	1,0 TO 1,5mm <sup>2</sup>	Ø 1,4 TO 2,4mm	BRONZE	PRÉ ESTANHADO/PRE TIN
PART NUMBER	DESCRIÇÃO DESCRIPTION	WIRE RANGE	INSULATION RANGE	MATERIAL	ACABAMENTO FINISH

1	2	DOUBLE LOCK 12 POSN ECONOSEAL "J" MARK II	PBT	AMARELO/YELLOW
1	1	PLUG HSG. 12 POSN ECONOSEAL "J" MARKII	PBT	PRETO/BLACK
-1		DESCRIÇÃO DESCRIPTION	MATERIAL	ACABAMENTO FINISH
444010				
THIS DRAWING IS A CONTROLLED DOCUMENT.		DWN 05MAY2011 NCLAPRESA	TE Connectivity	
DIMENSIONS: mm		CHK 07MAY2011 JOSÉ R. GOLDSCHMIDT		
TOLERANCES UNLESS OTHERWISE SPECIFIED:		APVD 07MAY2011 MAURICIO GISOLDI	NAME	
0 PLC ± -		PRODUCT SPEC		
1 PLC ± 0,3		APPLICATION SPEC		
2 PLC ± -		SIZE CAGE CODE DRAWING NO		
3 PLC ± -		A2 00779 C=444010		
4 PLC ± -		RESTRICTED TO		
ANGLES ± 1°		WEIGHT		
FINISH		CUSTOMER DRAWING		
MATERIAL SEE TABLE		SCALE 2:1 SHEET 1 of 1 REV B1		

CAD  
 DO NOT REVISE  
 EXCEPT BY CAD

444010