

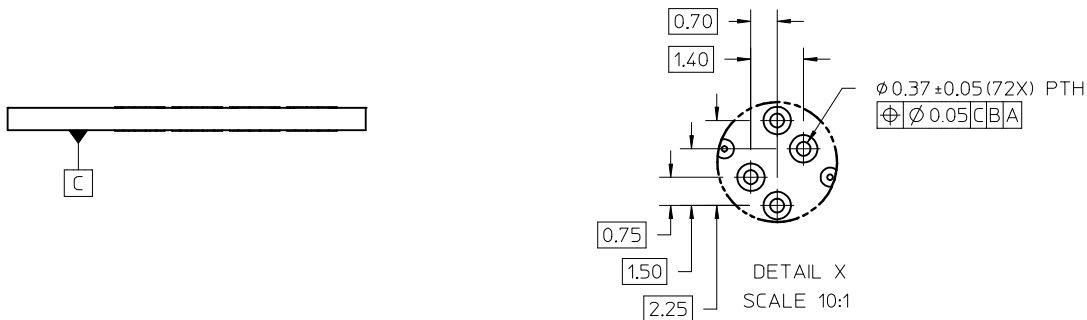
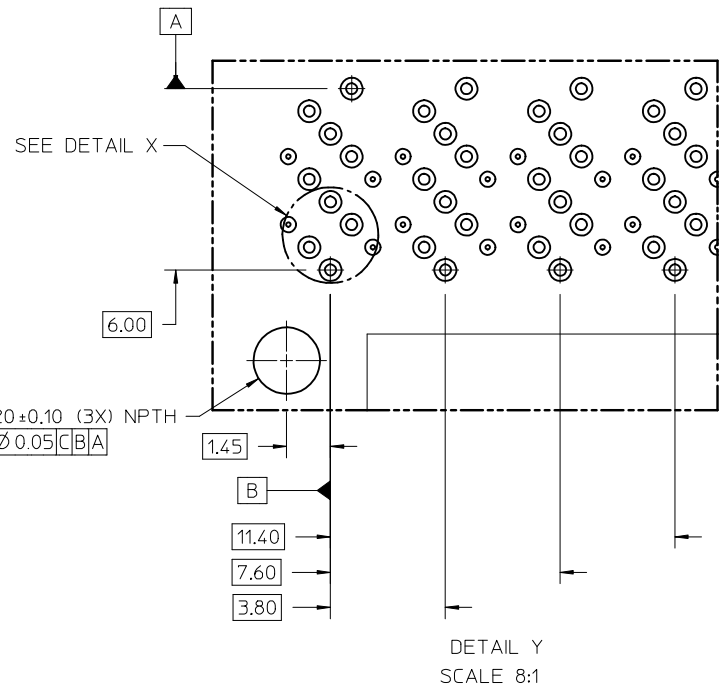
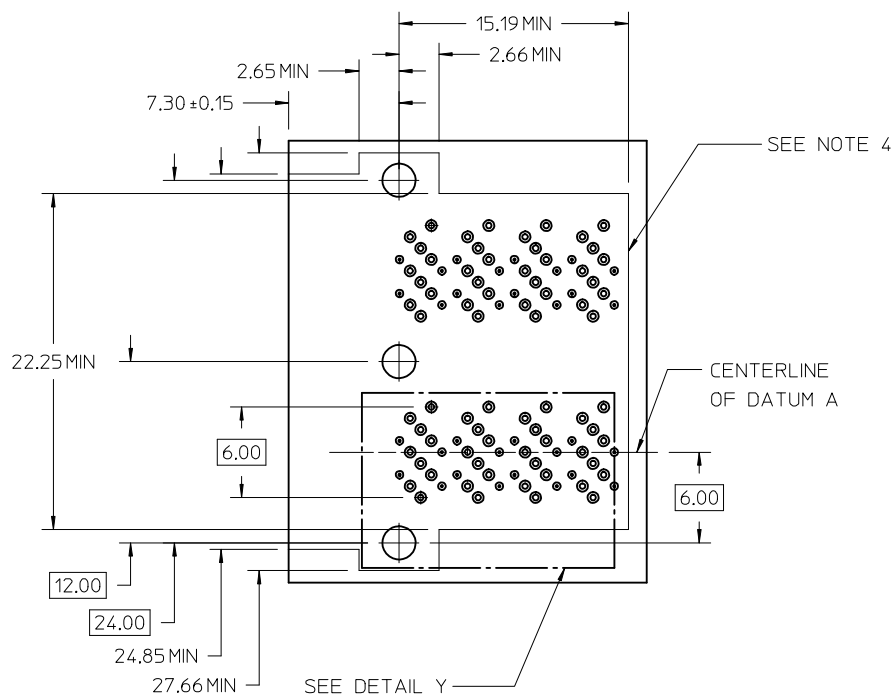
- NOTES:
- MATERIALS:
CONNECTOR HOUSING: HIGH TEMPERATURE THERMOPLASTIC
GLASS FILLED, UL 94V-0
TERMINALS: COPPER ALLOY
 - FINISHES:
CONTACT AREA: 0.76µM MIN GOLD OVER 2.54µM MIN NICKEL
TAIL AREA:
OPTION 1: 0.76µM-1.52µM TIN/LEAD (90/10) OVER 2.54µM MIN NICKEL
OPTION 2: 0.76µM-1.52µM TIN (LEAD FREE) OVER 2.54µM MIN NICKEL
 - PRODUCT SPECIFICATION: PS-76867-001
 - PACKAGING SPECIFICATION: PK-76867-001
 - MATES WITH: MOLEX CABLE SERIES 100171, 100189, 100190 & 100191
 - MOUNTING HARDWARE NOT SUPPLIED, REFER TO APPLICATION SPECIFICATION AS-76867-001
 - APPROXIMATE MOLDING GATE LOCATION
 - PLUG MODULE PCB LAYOUT REFER TO SD-76866-9900

PLATING OPT.	MATERIAL NO.
OPTION 1	76867-0002
OPTION 2	76867-0012

REV'D GATE LOCATION EC NO: UCP2015-4516 DRWN: TMCLELL 2015/04/28 CHKD: TMCLELL AND 2015/04/28 APPR: TMCLELL 2015/04/28	QUALITY SYMBOLS 	GENERAL TOLERANCES (UNLESS SPECIFIED)		DIMENSION STYLE MM ONLY	SCALE 4:1	DESIGN UNITS METRIC	THIRD ANGLE PROJECTION
		4 PLACES ± --- ± --- 3 PLACES ± --- ± .005 2 PLACES ± 0.13 ± .010 1 PLACE ± 0.25 ± --- 0 PLACE ± ±	DRAWN BY DATE KLANG 2009/05/15	TITLE IPASS PLUS HD 1X2 ASSEMBLY INTERNAL			
		ANGULAR ±1/2° DRAFT WHERE APPLICABLE MUST REMAIN WITHIN DIMENSIONS	CHECKED BY DATE MBANAKIS 2010/11/17	DOCUMENT NO. SD-76867-002			
		SIZE 	APPROVED BY DATE MBANAKIS 2010/11/17		SHEET NO. 1 OF 3		

THIS DRAWING CONTAINS INFORMATION THAT IS PROPRIETARY TO MOLEX INCORPORATED AND SHOULD NOT BE USED WITHOUT WRITTEN PERMISSION

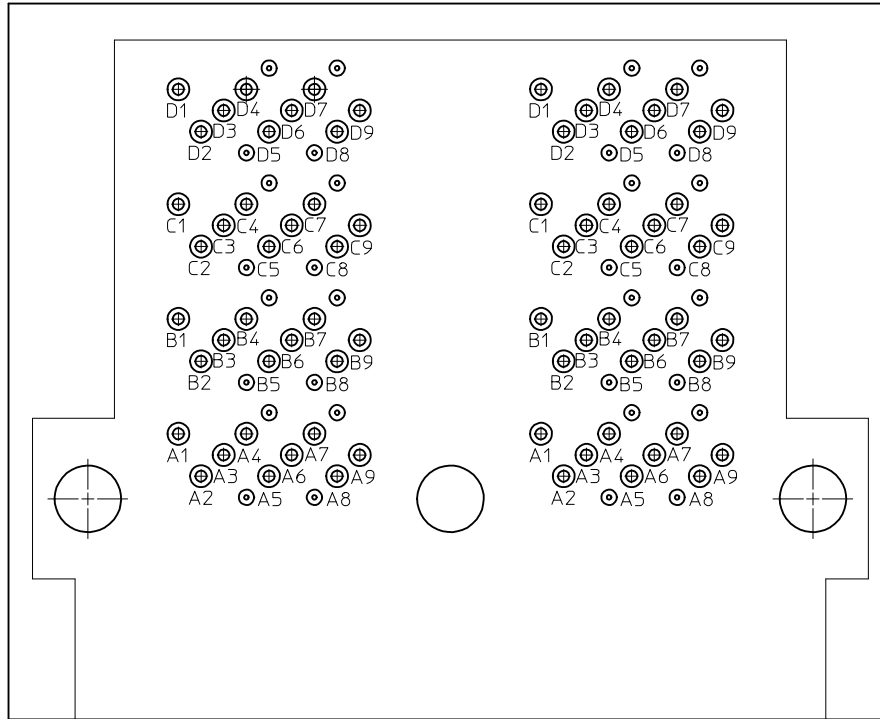
RECOMMENDED FOOTPRINT



- NOTES:
1. RECOMMENDED DRILL SIZE AND ANNULAR RING FOR A 0.37 ϕ FINISHED PTH - REFER TO APPLICATION SPECIFICATION AS-76867-001
 2. MINIMUM RECOMMENDED SPACING: 14.00MM
 3. MINIMUM PCB THICKNESS: 1.57MM
 4. CONNECTOR KEEP OUT AREA

SEE SHEET 1 DEC NO: UCP2015-4516 DRWN: MCLELL 2015/04/28 CHKD: MCLELLAND 2015/04/28 APPR: MCLELL 2015/04/28	DESCRIPTION B10	QUALITY SYMBOLS	GENERAL TOLERANCES (UNLESS SPECIFIED)	DIMENSION STYLE MM ONLY	SCALE 4:1	DESIGN UNITS METRIC	THIRD ANGLE PROJECTION
		▽=0	mm INCH	DRAWN BY DATE KLANG 2009/05/15	TITLE IPASS PLUS HD 1X2 ASSEMBLY INTERNAL		SHEET NO. 2 OF 3
		▽=0	4 PLACES ± --- ± ---	CHECKED BY DATE	APPROVED BY DATE MBANAKIS 2010/11/17		
		▽=0	3 PLACES ± --- ± .005	MATERIAL NO.	DOCUMENT NO. SD-76867-002		
		2 PLACES ± 0.13 ± .010	DRAFT WHERE APPLICABLE MUST REMAIN WITHIN DIMENSIONS	SIZE C	THIS DRAWING CONTAINS INFORMATION THAT IS PROPRIETARY TO MOLEX INCORPORATED AND SHOULD NOT BE USED WITHOUT WRITTEN PERMISSION		
		1 PLACE ± 0.25 ± ---					
		0 PLACE ± ±					

FOOTPRINT CIRCUIT IDENTIFICATION



SEE SHEET 1 EC NO: UCP2015-4516 DRWN:MCLELL 2015/04/28 CHKD:MCLELLAND 2015/04/28 APPR:MCLELL 2015/04/28	QUALITY SYMBOLS	GENERAL TOLERANCES (UNLESS SPECIFIED)		DIMENSION STYLE	SCALE	DESIGN UNITS	THIRD ANGLE PROJECTION
	▽=0			MM ONLY	8:1	METRIC	
	▽=0			DRAWN BY DATE	TITLE		
	▽=0			CHECKED BY DATE	IPASS PLUS HD 1X2 ASSEMBLY INTERNAL		
		ANGULAR ±1/2°		APPROVED BY DATE	DOCUMENT NO.		
		DRAFT WHERE APPLICABLE MUST REMAIN WITHIN DIMENSIONS		MBANAKIS 2010/11/17	SD-76867-002		
				MATERIAL NO.	SHEET NO.		
B10				SEE CHART	3 OF 3		
				THIS DRAWING CONTAINS INFORMATION THAT IS PROPRIETARY TO MOLEX INCORPORATED AND SHOULD NOT BE USED WITHOUT WRITTEN PERMISSION			