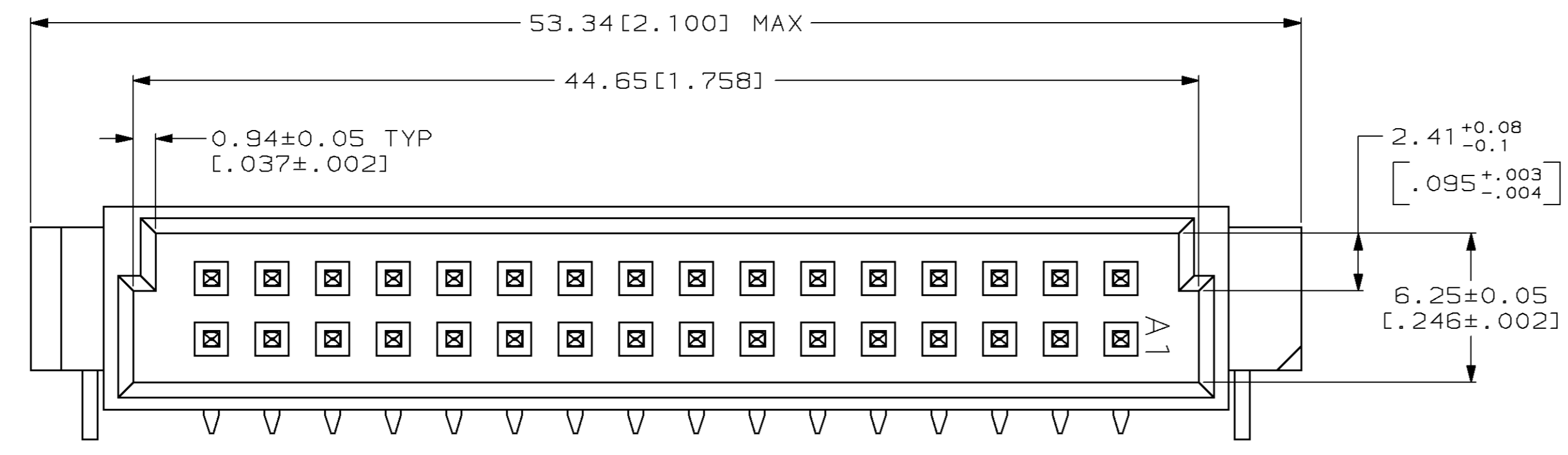
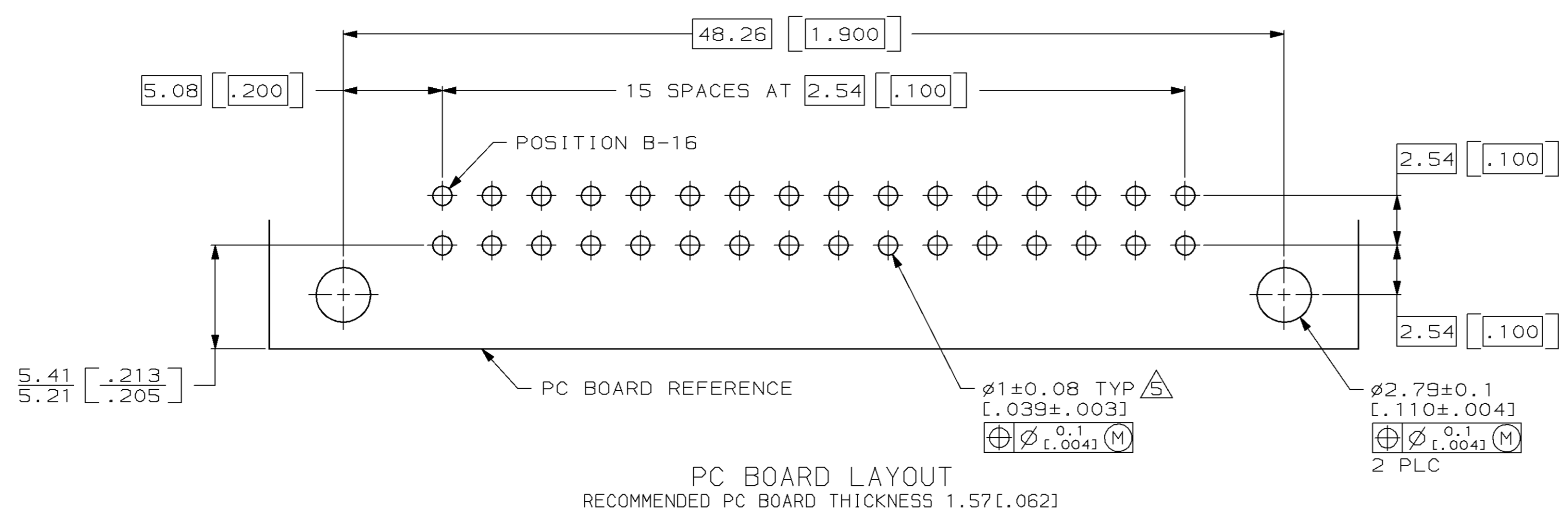
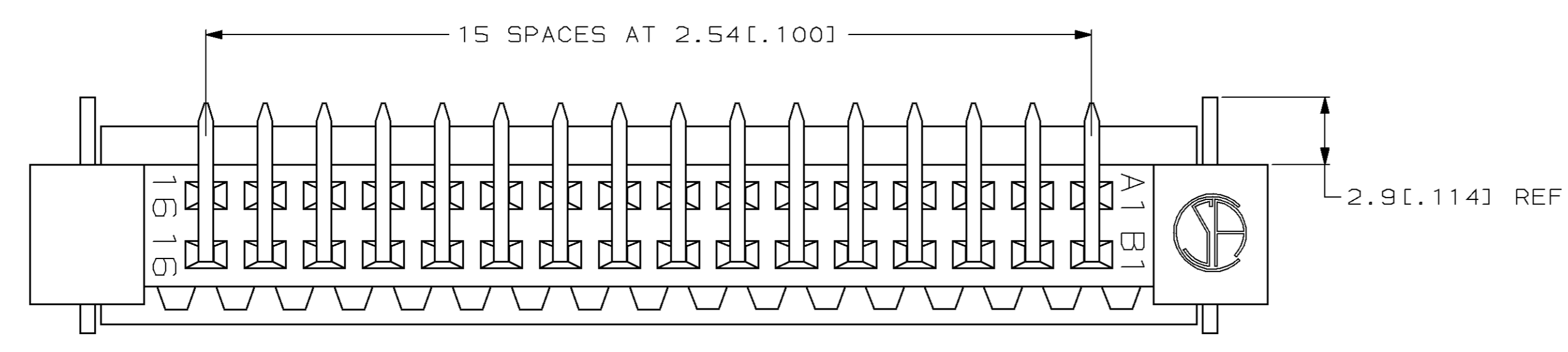
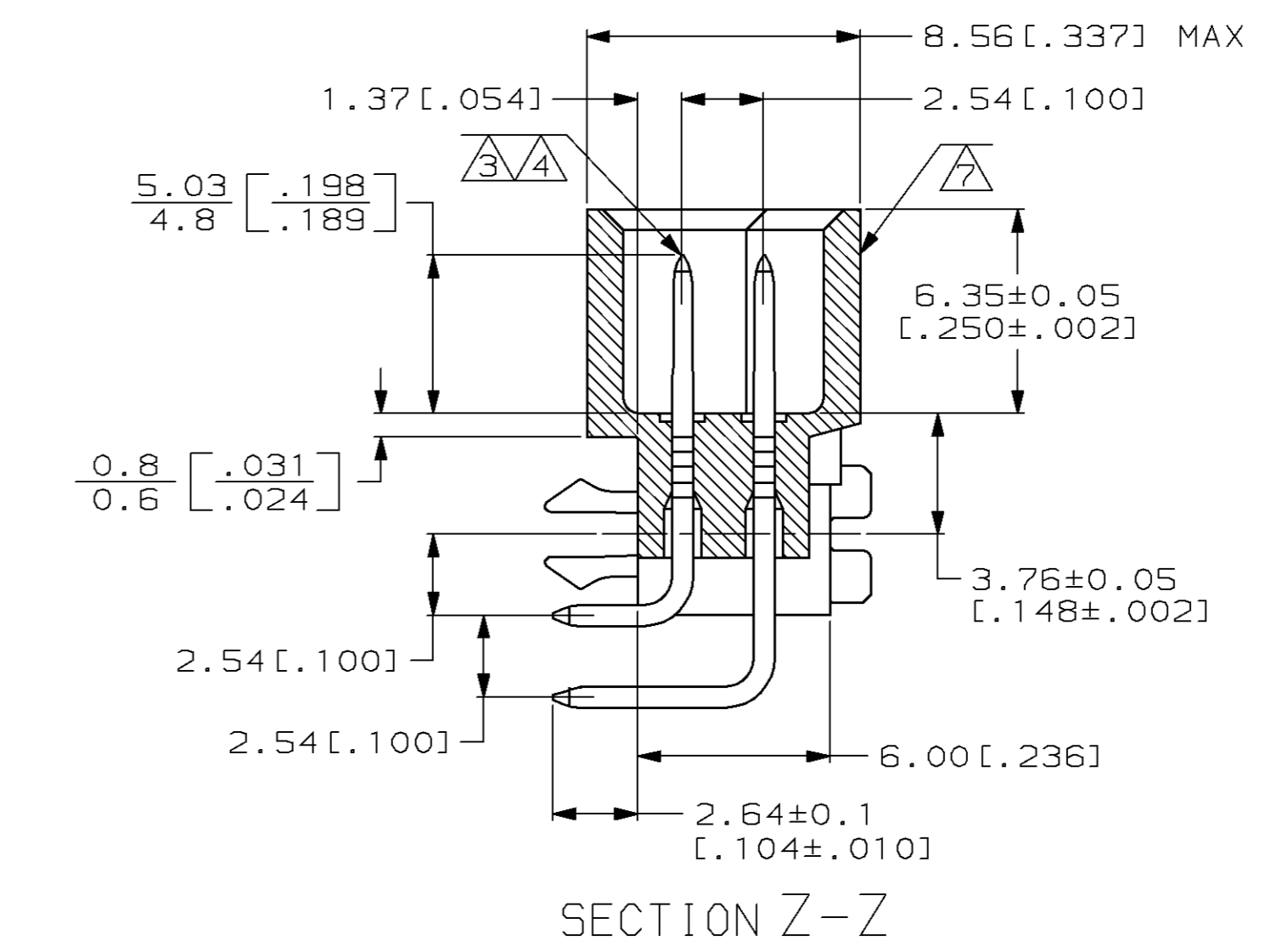
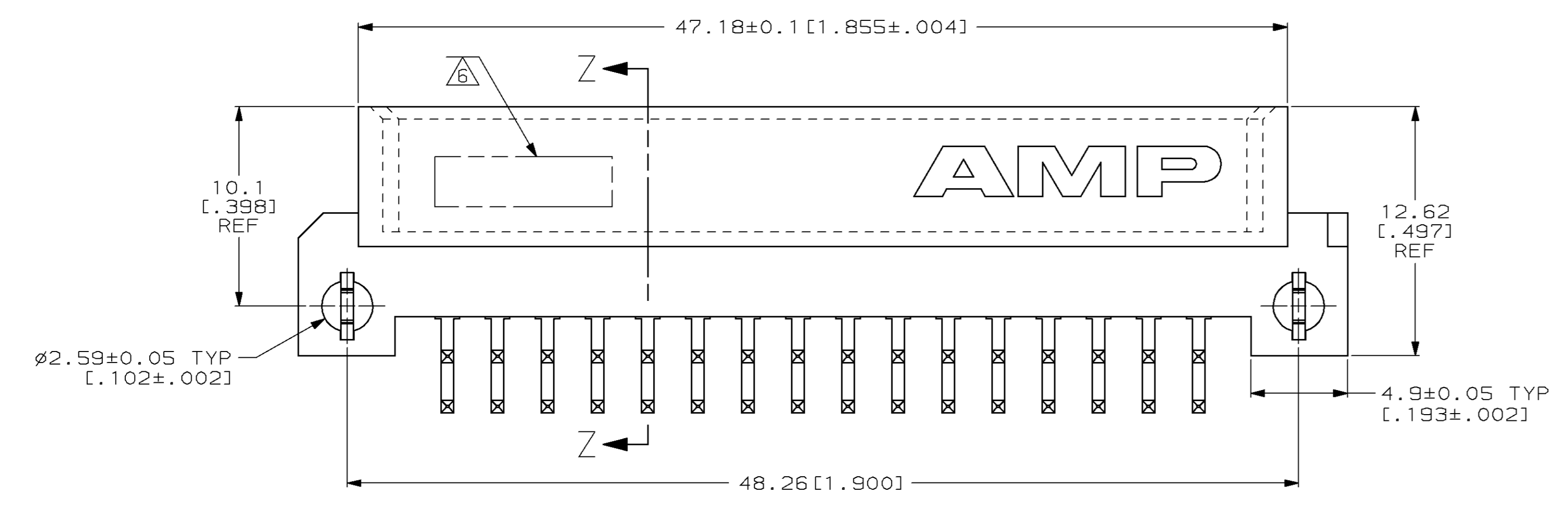


LOC		DIST		P		F		ZONE		LTR		REVISIONS			
AD	25											DESCRIPTION	DATE	APPD	
												D	EC 0504-0052-96	7/7/97	CR



- ① HOUSING MATERIAL: GLASS-FILLED POLYESTER. COLOR: GRAY.
- ② POST MATERIAL: BRASS.
- ③ POST FINISH: DIN 41612 CLASS 3 IN CONTACT AREA. TIN-LEAD PLATE ON POSTS.
- ④ POST FINISH: DIN 41612 CLASS 2 IN CONTACT AREA. TIN-LEAD PLATE ON POSTS.
- ⑤ RECOMMENDED HOLE SIZE FOR MANUAL APPLICATION OF CONNECTOR ONTO PC BOARD.
- ⑥ [PART NUMBER, DATE CODE] MARKED THIS APPROXIMATE AREA.
- ⑦ MARKINGS ON THIS SIDE.



OBSOLETE	3	1-16	X	X	32	536386-9
	4	1-16	X	X	32	536386-5
NOTES		POSITIONS LOADED	B	A	NO. OF LOADED POSITION	ASSY PART NUMBER

DO NOT SCALE PRINT. UNLESS SPECIFIED DIMENSIONS IN mm [INCHES]		TOLERANCES ON:		PART NO	
1	PLC DEC ±	DR	L. BRINER	8/17/92	AMP Incorporated Harrisburg, PA 17105-3608
2	PLC DEC ± 0.13 [.005]	CHK	R. PATTERSON	9/30/92	
ANGLES	±	APPD	R. PATTERSON	9/30/92	NAME
		APPD	D.C. RUBENDALL	10/1/92	PIN ASSEMBLY, EUROCARD, TYPE "B" WITH BOARD-LOCKS
MATERIAL		PRODUCT SPEC			
HOUSING: ①		APPLICATION SPEC			SIZE
POST: ②					D
FINISH		WEIGHT			CAGE CODE
POST: ③④					00779
					DRAWING NO
					©=536386
					SCALE
					5:1
					SHEET
					1 OF 1

THIS DRAWING IS A CONTROLLED DOCUMENT FOR AMP INCORPORATED. IT IS SUBJECT TO CHANGE AND THE CONTROLLING ENGINEERING ORGANIZATION SHOULD BE CONTACTED FOR THE LATEST REVISION.