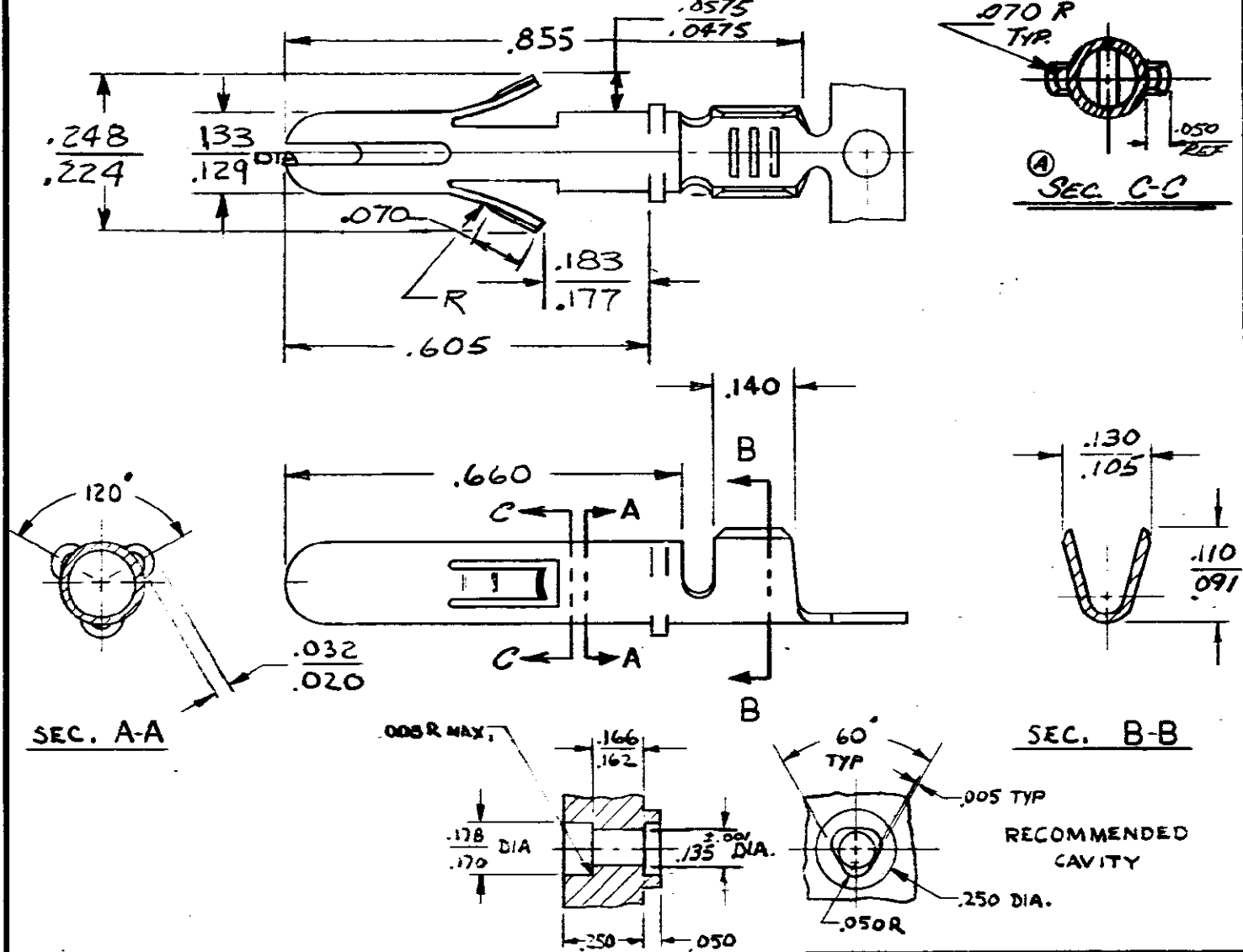


© COPYRIGHT 1976 BY AMP INCORPORATED, HARRISBURG, PA. ALL INTERNATIONAL RIGHTS ARE RESERVED. NO REPRODUCTION OR TRANSMISSION OF THIS DRAWING IS PERMITTED WITHOUT WRITTEN PERMISSION OF AMP INCORPORATED. PATENTS PENDING.

| REVISIONS |   |         |          |    |
|-----------|---|---------|----------|----|
| LTR       | DESCRIPTION                                       | DATE    | APPROVED | PF |
| A         | ADDED RADIUS TO LOCKING LATCHES PER SEC. C-C 3400 | 1-21-77 | GD/      |    |
| B         | REVISED RELEASED A-3590                           | 5/4/77  | GT/      |    |
| C         | REVISED A-3901                                    | 3/2/78  | GT/      |    |
| D         | REVISED A-3954                                    | 5-18-78 | SS/      |    |
| E         | REVISED 0 AF-1993                                 | 9/2/87  | SY       |    |



|           |         |
|-----------|---------|
| 22-18     | 62505-1 |
| WIRE SIZE | PART NO |

UNLESS OTHERWISE SPECIFIED DIMENSIONS ARE IN INCHES. TOLERANCES ON: DECIMALS ± .015 ANGLES ± 1° 0'

MATERIAL  
 .016  
 BRASS

FINISH  
 NONE

CONTRACT NO  
 DR *R. J. West* 6-18-76  
 CHK *John P. ...* 6-18-76  
 APPD *R. J. West* 6-22-76  
 APPD  
 DSGN APPD  
 OTHER APPD

**AMP** AMP INCORPORATED  
 Harrisburg, Pa.

NAME  
 PIN .130 DIAMETER

|                  |                               |                            |
|------------------|-------------------------------|----------------------------|
| SIZE<br><b>A</b> | CODE IDENT NO<br><b>00779</b> | DRAWING NO<br><b>62505</b> |
| SCALE<br>#       | SHEET<br>#                    |                            |