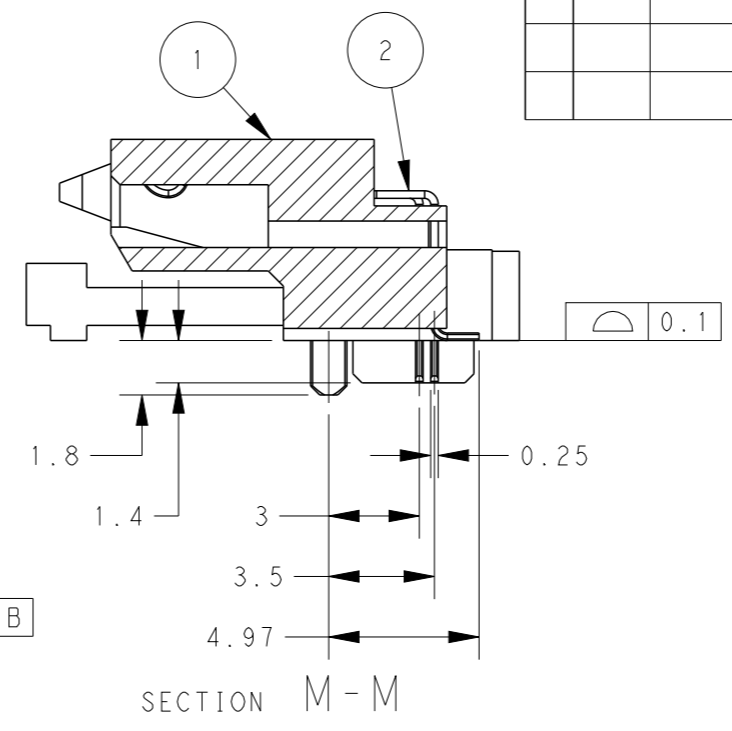
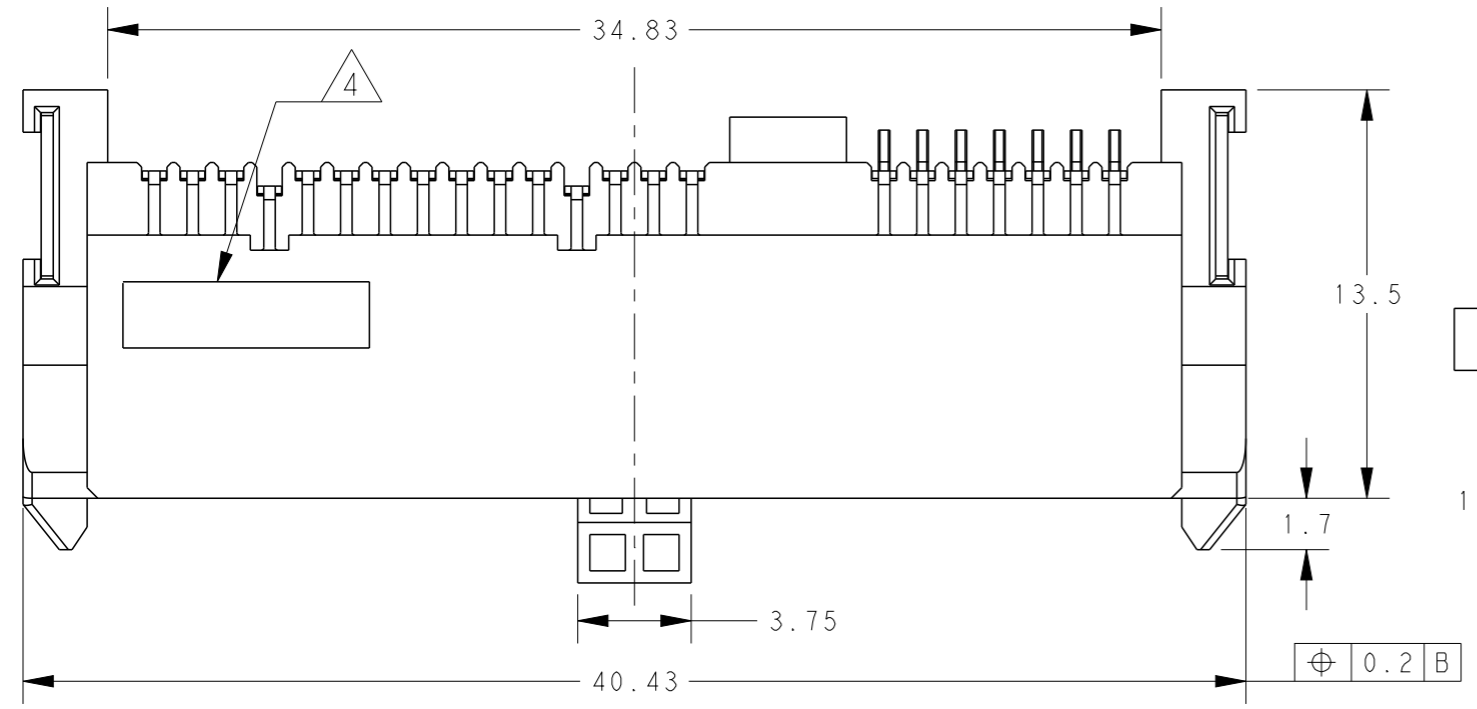


THIS DRAWING IS UNPUBLISHED. RELEASED FOR PUBLICATION 20
 © COPYRIGHT 20 BY - ALL RIGHTS RESERVED.

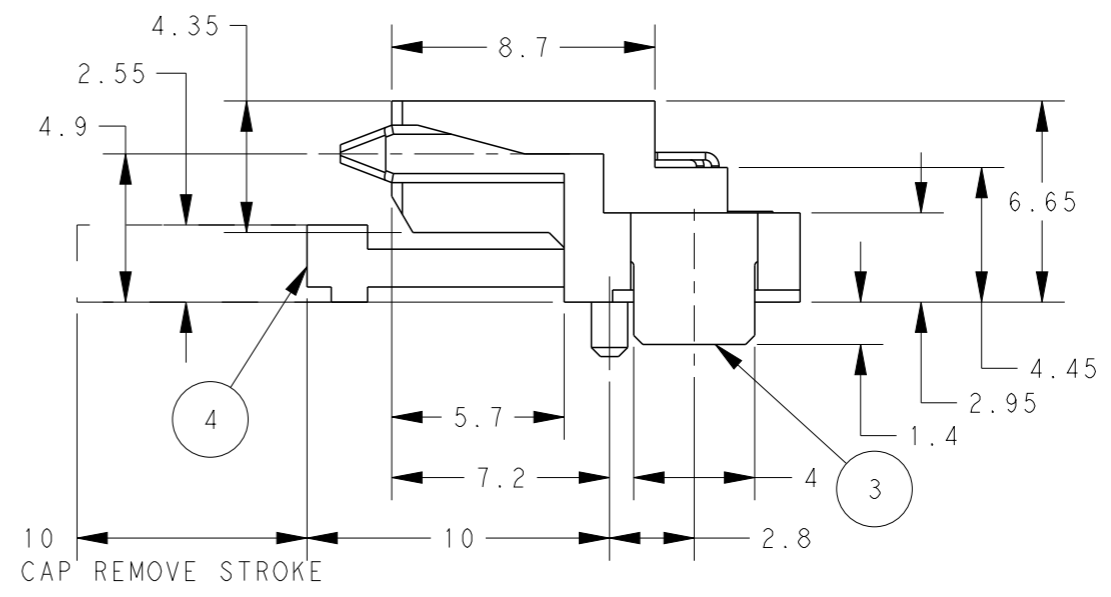
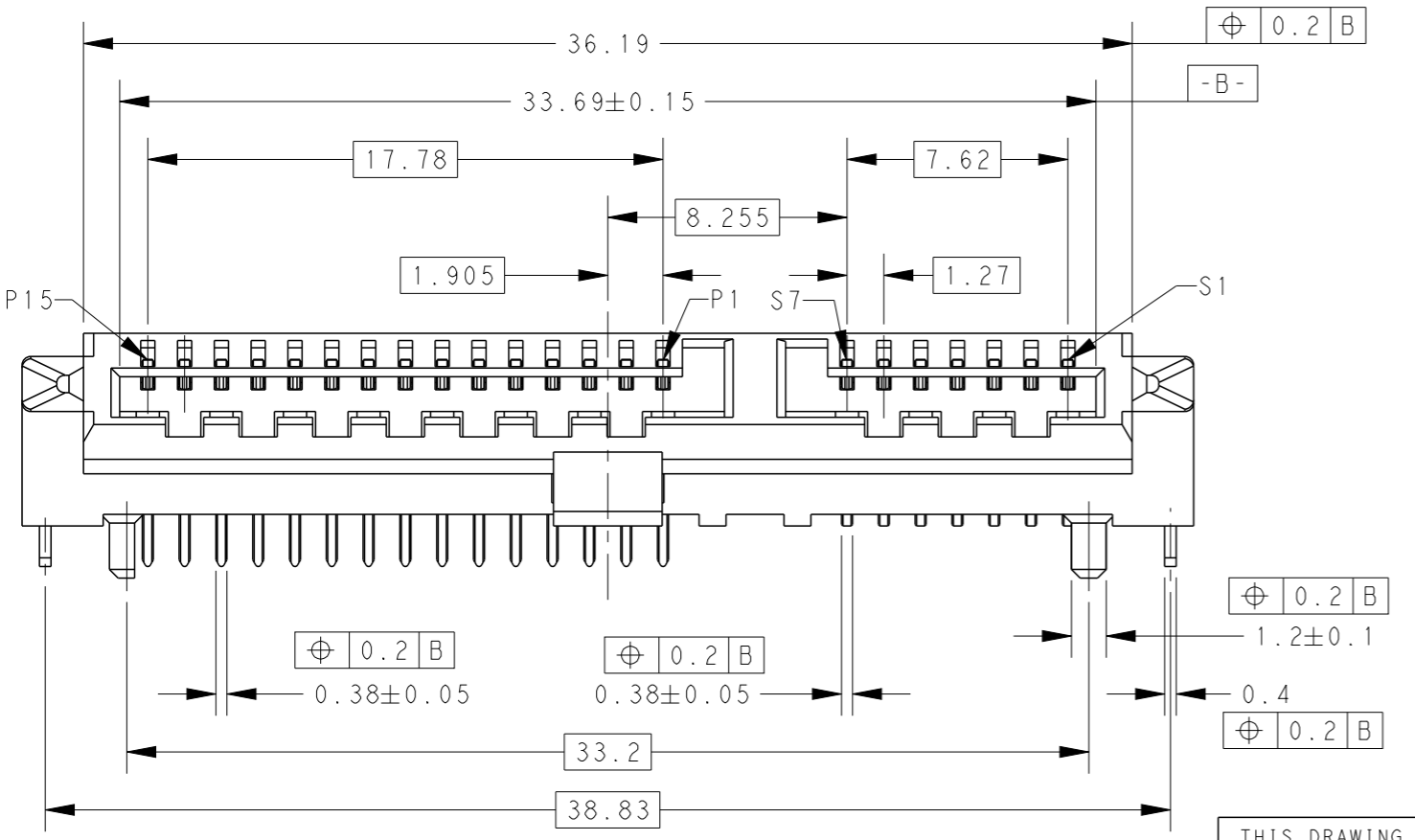
LOC DW DIST

REVISIONS				
P	LTR	DESCRIPTION	DATE	APVD
	A	RELEASED	11OCT2013	W.C V.P

2129583-1: AS SHOWN



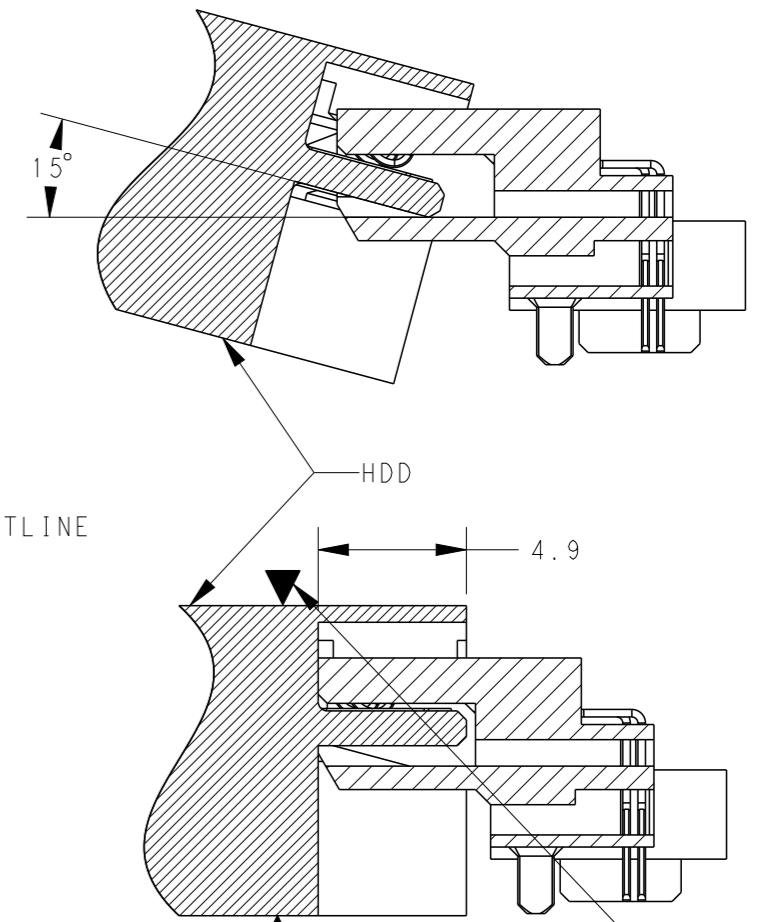
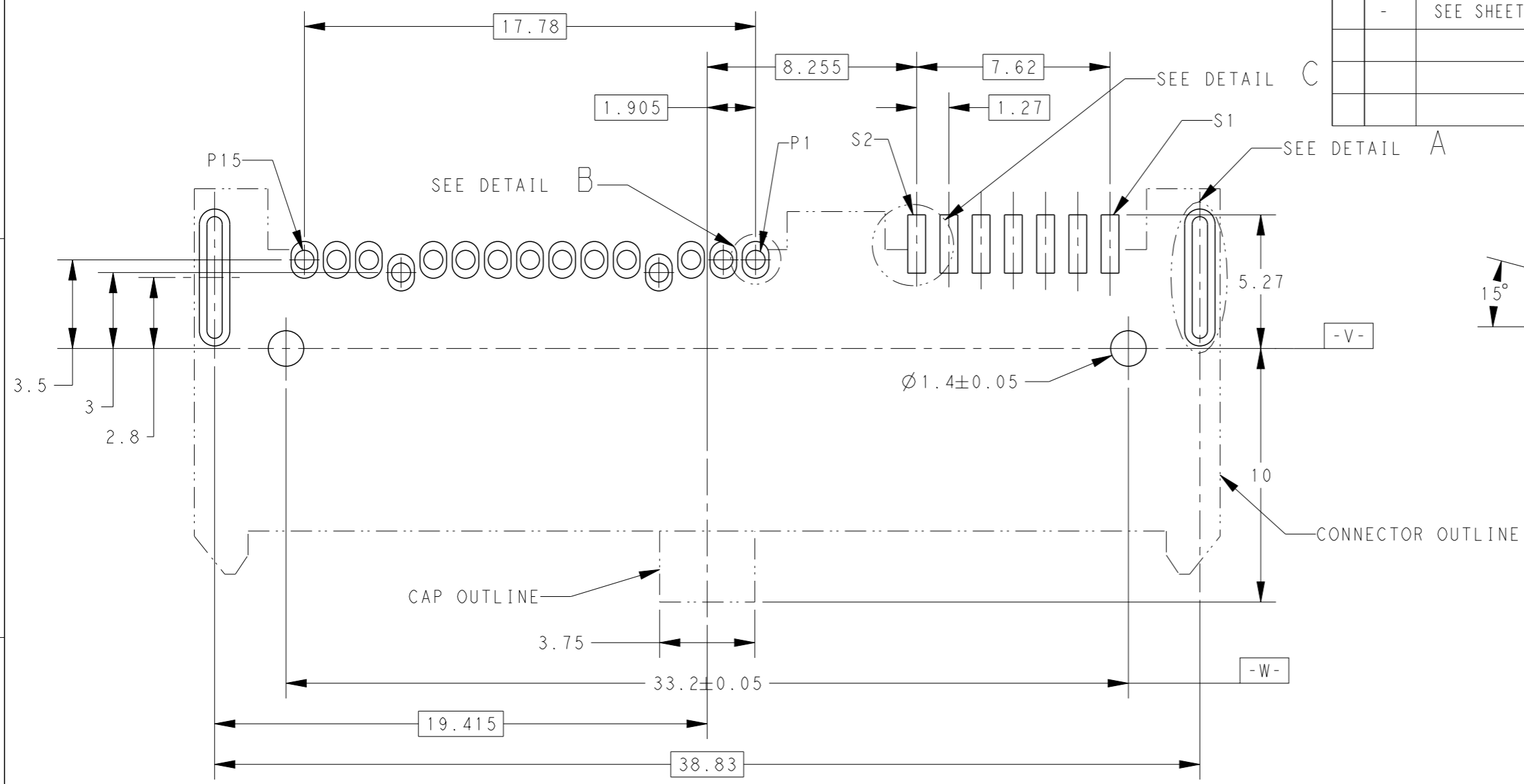
- MATERIAL
 - ① HOUSING: HIGH TEMPERATURE THERMOPLASTIC UL94V-0, COLOR: BLACK
 - ② CONTACT: COPPER ALLOY
 - ③ LEG: COPPER ALLOY
 - ④ CAP: HIGH TEMPERATURE THERMOPLASTIC UL94V-0, COLOR: BLACK
 - FINISH:
 - CONTACT: CONTACT AREA: AU PLATING 0.127um WITH LUBRICANT HM-15
 - SOLDER TAILS: MATTE-TIN PLATING 2.5um. NICKEL UNDER PLATING 1.3um OVER ALL.
 - SOLDER LEG: MATTE-TIN PLATING 2.5um NICKEL UNDER PLATING 1.3um OVER ALL.
 - MEET HALOGEN FREE REQUIREMENT:
 - Cl: 900 ppm MAX.
 - Br: 900 ppm MAX.
- ▲ DATE CODE
 WW YY D S
 ASSY MECHINE ID
 DAY OF WEEK
 WEEK OF YEAR
 THE LAST DIGITS OF YEAR



THIS DRAWING IS A CONTROLLED DOCUMENT.		DWN W. CHEN 27NOV2012	STE TE Connectivity
		CHK H. KODAMA 27NOV2012	
DIMENSIONS: mm		APVD H. KODAMA 27NOV2012	NAME REC. ASSEMBLY SLANT INSERTION SATA H4.9 6.0 GBPS
TOLERANCES UNLESS OTHERWISE SPECIFIED:		PRODUCT SPEC 108-99048	SIZE A3
0 PLC ± 0.2		APPLICATION SPEC 501-99048	CAGE CODE 00779
1 PLC ± 0.2		WEIGHT	DRAWING NO C-2129583
2 PLC ± 0.2			RESTRICTED TO
3 PLC ± 0.2			
4 PLC ± 0.2			
ANGLES ± 5			
FINISH -			
MATERIAL -		CUSTOMER DRAWING	SCALE 4:1 SHEET 1 OF 3 REV A

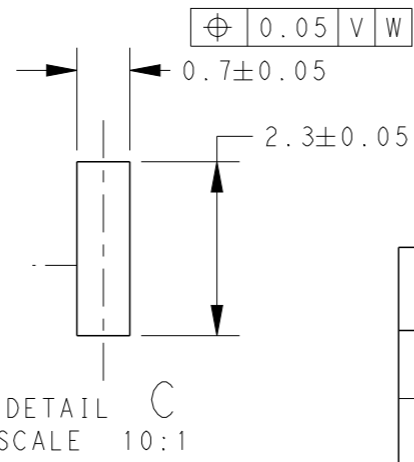
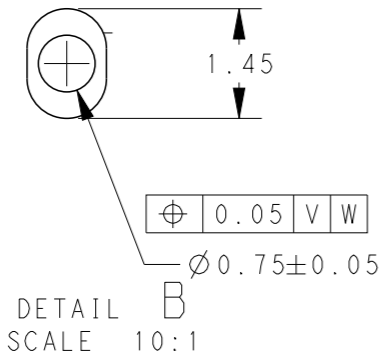
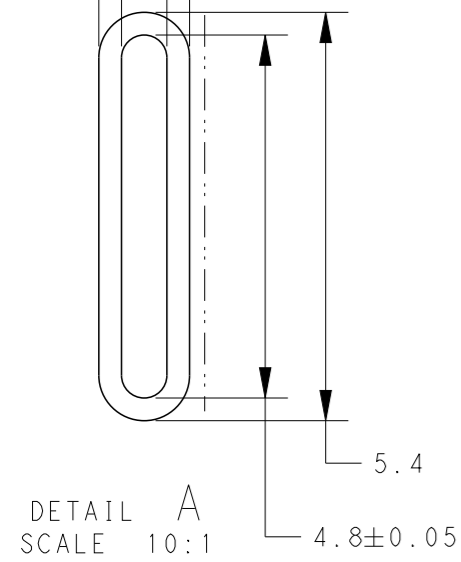
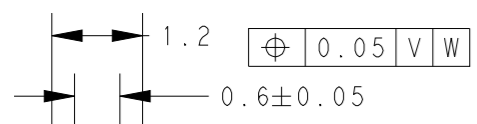
THIS DRAWING IS UNPUBLISHED. RELEASED FOR PUBLICATION 20
 © COPYRIGHT 20 BY - ALL RIGHTS RESERVED.

LOC	DIST	REVISIONS			
P	LTR	DESCRIPTION	DATE	DWN	APVD
DW	-	SEE SHEET 1	-	-	-



SUGGEST TO ADD SUPPORTS ON THE HDD NEAR THE CONNECTORS

REFERENCE PCB LAYOUT (TOLERANCE ±0.05)
 REFERENCE PCB THICKNESS T=1.0
 SCALE 5:1



THIS DRAWING IS A CONTROLLED DOCUMENT.		DWN	-	 TE Connectivity	NAME REC. ASSEMBLY SLANT INSERTION SATA H4.9 6.0 GBPS
DIMENSIONS: mm		CHK	-		
TOLERANCES UNLESS OTHERWISE SPECIFIED:		APVD	-		
0 PLC ±0.2 1 PLC ±0.2 2 PLC ±0.2 3 PLC ±0.2 4 PLC ±0.2 ANGLES ±5		PRODUCT SPEC	-		
MATERIAL		APPLICATION SPEC	-	SIZE	A3
FINISH		WEIGHT	-	CAGE CODE	00779
CUSTOMER DRAWING		SCALE	5:1	DRAWING NO	C-2129583
		SHEET	2	RESTRICTED TO	-
		OF	3	REV	A

THIS DRAWING IS UNPUBLISHED.

RELEASED FOR PUBLICATION

20

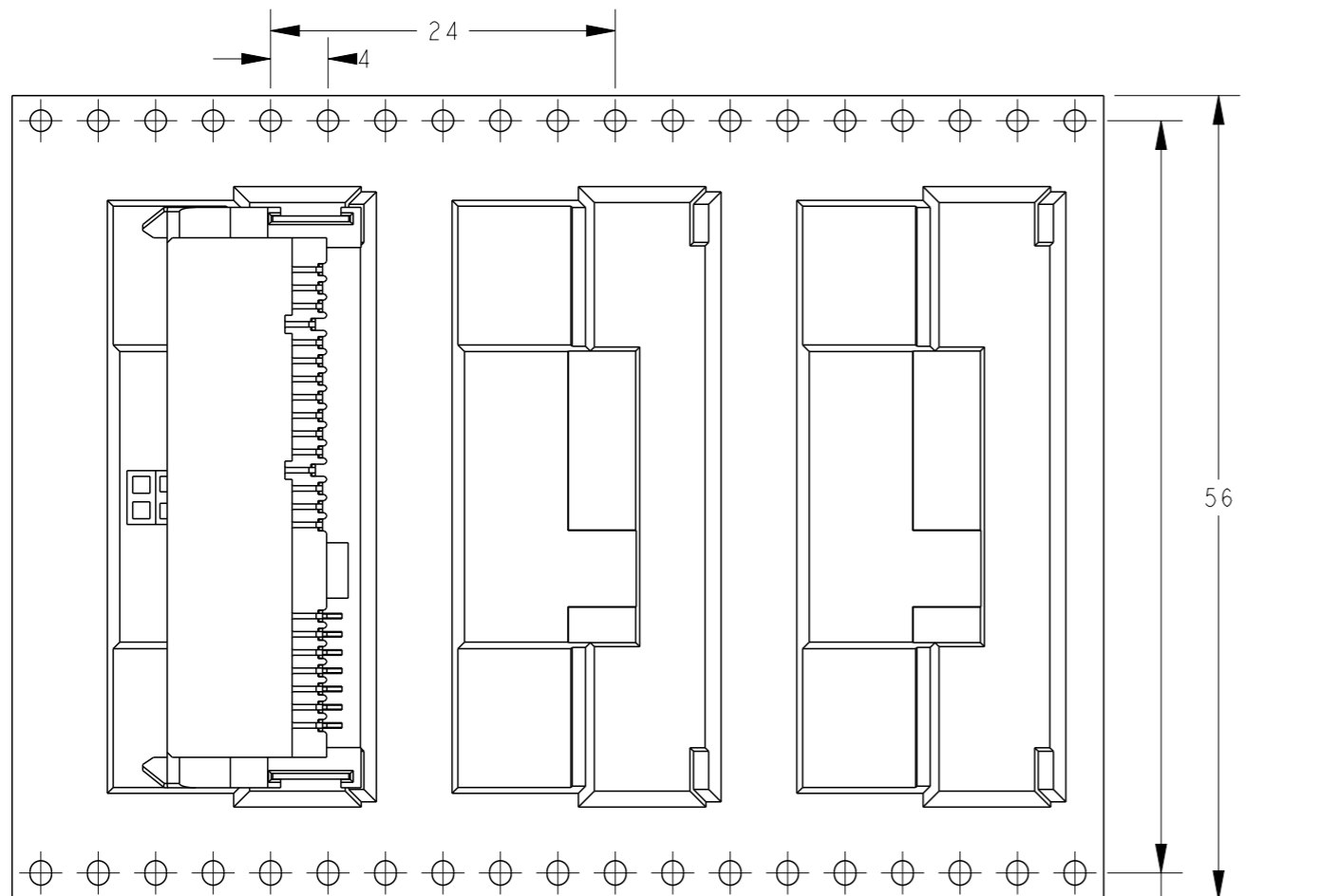
© COPYRIGHT 20 BY -

ALL RIGHTS RESERVED.

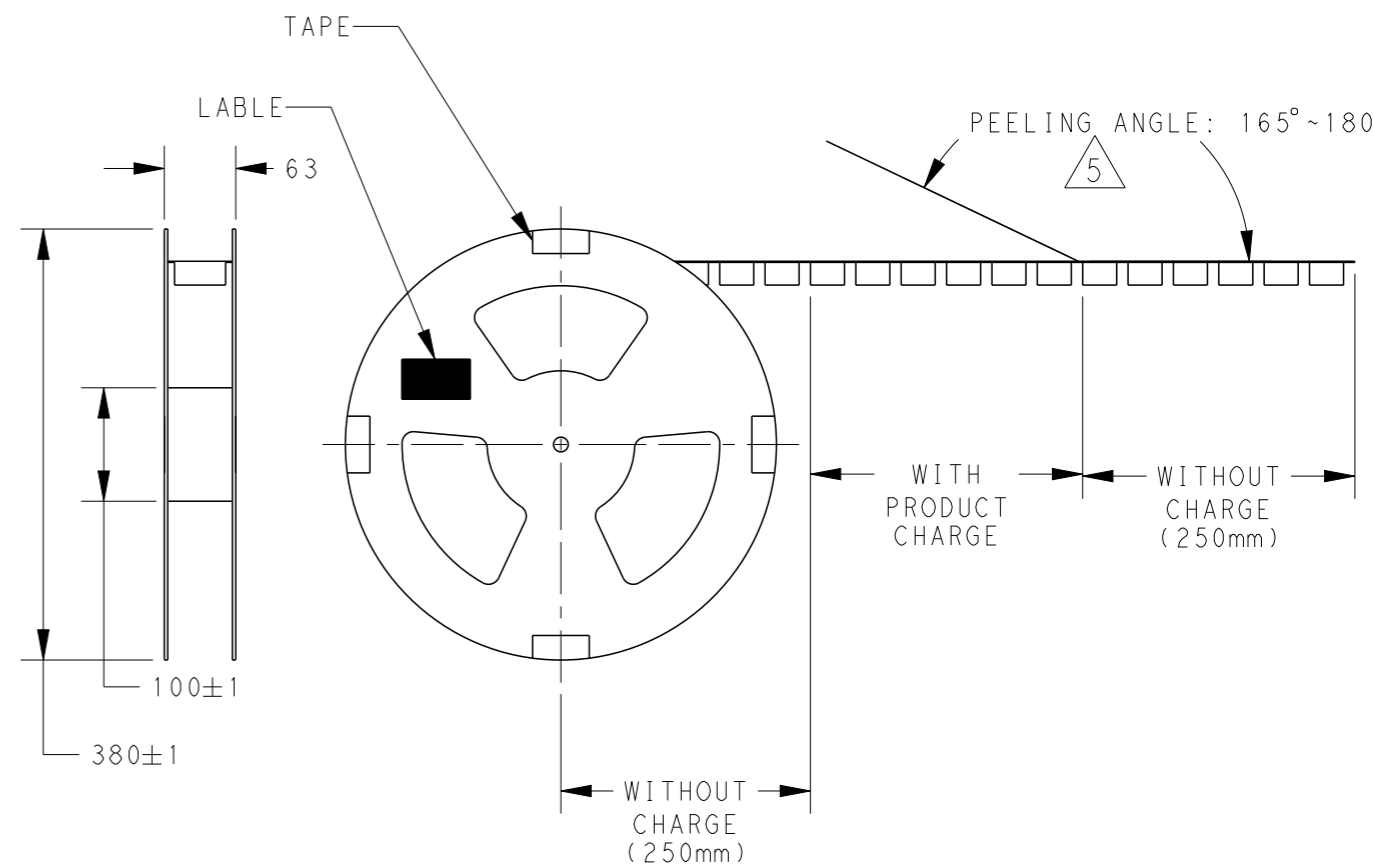
LOC DW DIST -

REVISIONS

P	LTR	DESCRIPTION	DATE	DWN	APVD
-	-	SEE SHEET 1	-	-	-



- △ PEELING STRENGTH OF COVER TAPE: 0.2N~1.2N
- 6. PACKING MATERIAL: CARRY TAPE: PS, COLOR: BLACK
COVER TAPE: PET, COLOR: CLEAR
- 7. QUANTITY: 380PCS/ REEL
1140PCS/ BOX



USER DIRECTION OF UNREELING

13.2

52.4±0.1

56

63

100±1

380±1

PEELING ANGLE: 165°~180°

WITH PRODUCT CHARGE

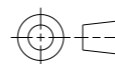
WITHOUT CHARGE (250mm)

WITHOUT CHARGE (250mm)

THIS DRAWING IS A CONTROLLED DOCUMENT.

DIMENSIONS:

mm



TOLERANCES UNLESS OTHERWISE SPECIFIED:

- 0 PLC ±0.2
- 1 PLC ±0.2
- 2 PLC ±0.2
- 3 PLC ±0.2
- 4 PLC ±0.2
- ANGLES ±5

MATERIAL -

FINISH -

DWN	-
CHK	-
APVD	-
PRODUCT SPEC	-
APPLICATION SPEC	-
WEIGHT	-



TE Connectivity

NAME			
REC. ASSEMBLY SLANT INSERTION SATA H4.9 6.0 GBPS			
SIZE	CAGE CODE	DRAWING NO	RESTRICTED TO
A3	00779	C-2129583	-

CUSTOMER DRAWING

SCALE NONE

SHEET 3 OF 3

REV A