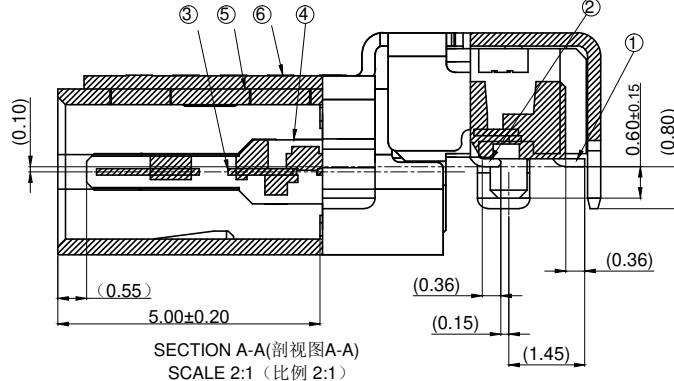
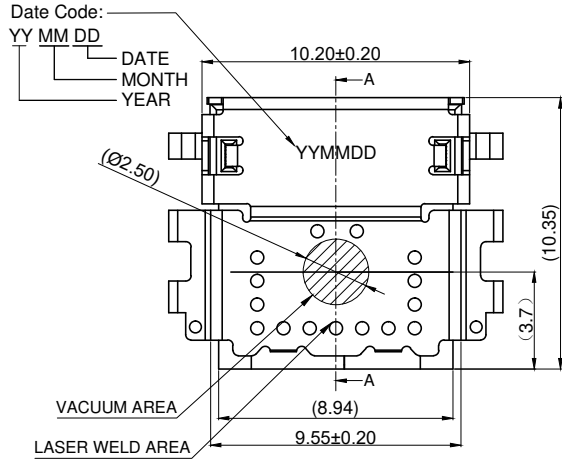


This document is the property of Amphenol Corporation and is delivered on the express condition that it is not to be disclosed, reproduced or used, in whole or in part, for manufacture or sale by anyone other than Amphenol Corporation without its prior consent. & that no right is granted to disclose or to use any information in this document.

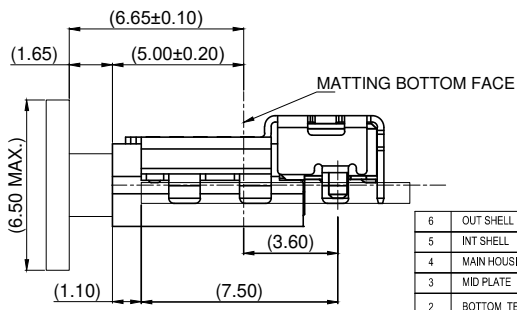
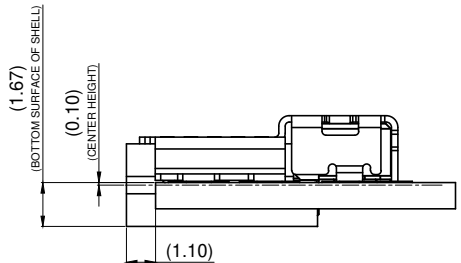
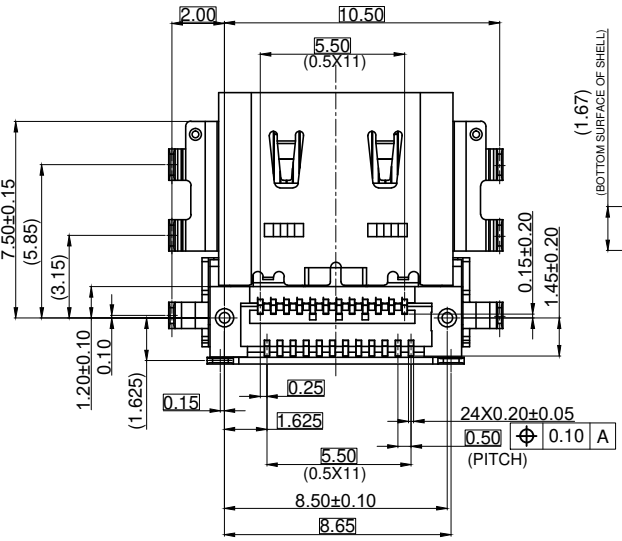
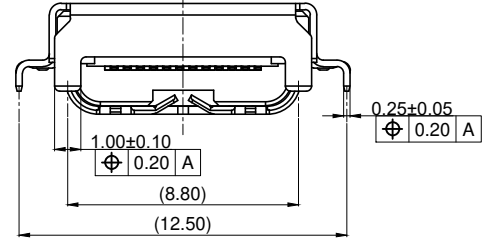
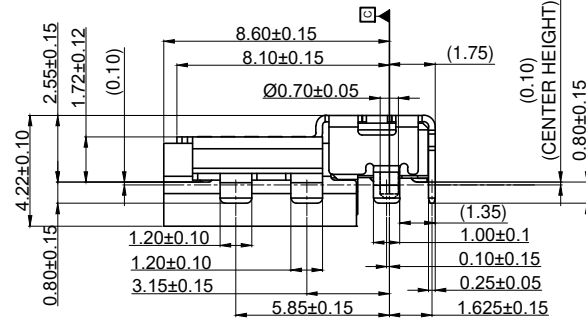
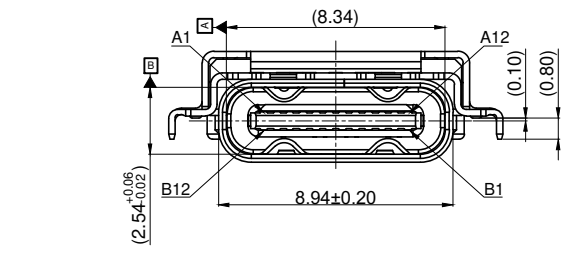
CUSTOMER DRAWING

REVISIONS				
SYM	ECN	DESCRIPTION	DATE	APPROVED
1	***	FIRST RELEASE	2020/06/16	Michael.lip
2	***	UPDATE LASER WELD AREA	2021/01/07	Michael.lip
3	***	UPDATE ORDER P/N SYSTEM	2021/02/25	Michael.lip
4	***	UPDATE PLATING SPEC.	2021/03/02	Michael.lip
5	***	UPDATE LASER WELD AREA	2021/03/16	Michael.lip
6	***	ADD PACKAGE	2021/05/06	Michael.lip
7	***	ADD PCB DIMENSION	2021/06/15	Michael.lip



Pin :

A1	A2	A3	A4	A5	A6	A7	A8	A9	A10	A11	A12
GND	TX1+	TX1-	Vbus	CC1	D+	D-	SBU1	Vbus	RX2-	RX2+	GND
GND	RX1+	RX1-	Vbus	SBU2	D-	D+	CC1	Vbus	TX2-	TX2+	GND
B12	B11	B10	B9	B8	B7	B6	B5	B4	B3	B2	B1



HF(无卤)	√
Non-HF(有卤)	

ITEM	DESCRIPTION	QTY	MATERIAL	FINISH	REMARK
6	OUT SHELL	1	STAINLESS STEEL	NICKEL PLATING	
5	INT SHELL	1	STAINLESS STEEL	NICKEL PLATING	
4	MAIN HOUSING	1	HIGH TEMPERATURE		COLOR:BLACK
3	MID PLATE	1	STAINLESS STEEL		
2	BOTTOM TERMINAL	1	COPPER ALLOY		Mating Area: Au 30u" Min Solder Area: Gold flash 80u"Min Nickel Under Plating Over All
1	TOP TERMINAL	1	COPPER ALLOY		

UNLESS OTHERWISE SPECIFIED TOLERANCES

U.S.	METRIC
±0.50	±0.25
±0.25	±0.10
±0.10	±0.05

APPROVAL DATE
DRAWN Sunny.Zhou 06/15/21
CHECKED Michael.Qin 06/15/21
CHECKED Michael.Qin

FOR MATERIALS AND FINISHES SEE NOTES

REMOVE SHARP EDGES

DIMENSIONS U.S. INCHES (METRIC) (MM)

ANGLE OF PROJECTION

Amphenol
Amphenol East Asia Limited

TITLE Customer Drawing For
USB4 Type C socket connector, Sink mount, D/R SMT
24Pin, CH=-0.10mm, No Water proof

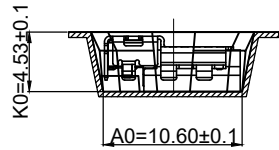
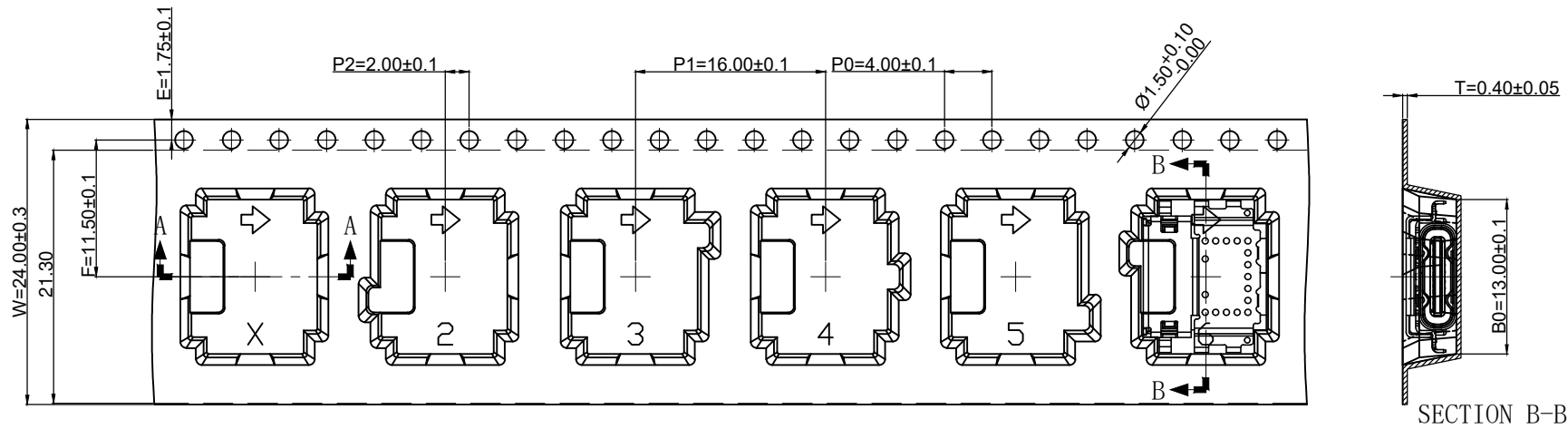
SCALE NONE SHEET 1 OF 3

SIZE DRAWING NO. C 12402072 REV. 7

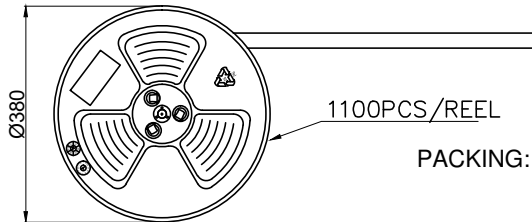
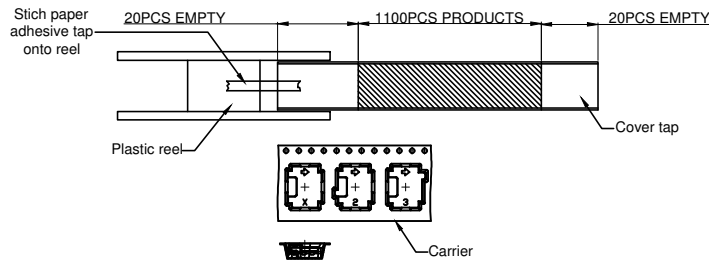
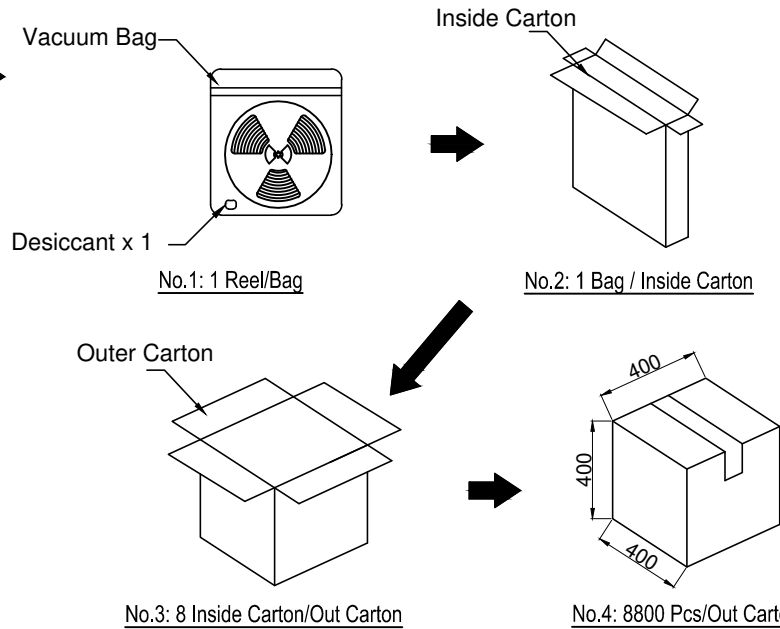
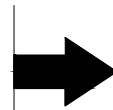
This document is the property of Amphenol Corporation and is delivered on the express condition that it is not to be disclosed, reproduced or used, in whole or in part, for manufacture or sale by anyone other than Amphenol Corporation without its prior consent, & that no right is granted to disclose or to use any information in this document.

CUSTOMER DRAWING

REVISIONS				
SYM	ECN	DESCRIPTION	DATE	APPROVED
SEE PAGE 1				



DIRECTION



PACKING: 1. 1100 PCS/REEL.
2. 8 REEL/Carton.

PACK DIRECTION



HF(无卤)	√
Non-HF(有卤)	

UNLESS OTHERWISE SPECIFIED		APPROVAL		DATE	Amphenol Amphenol East Asia Limited TITLE Customer Drawing For USB4 Type C socket connector, Sink mount, D/R SMT 24Pin, CH=-0.10mm, No Water proof SIZE DRAWING NO. REV. A3 C 12402072 7 SCALE NONE SHEET 3 OF 3
TOLERANCES		DRAWN	Sunny.Zhou	06/15/21	
.X	+/-	CHECKED	Michael.Qin	06/15/21	
.XX	+/-	CHECKED	Michael.Qin		
.XXX	+/-	DRAWING FILE :			
FRACTIONS	+/-	REMOVE SHARP EDGES		ANGLE OF PROJECTION	
ANGLES	+/-	DIMENSIONS			
		U.S.	INCHES		
		(METRIC)	(MM)		