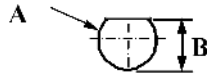
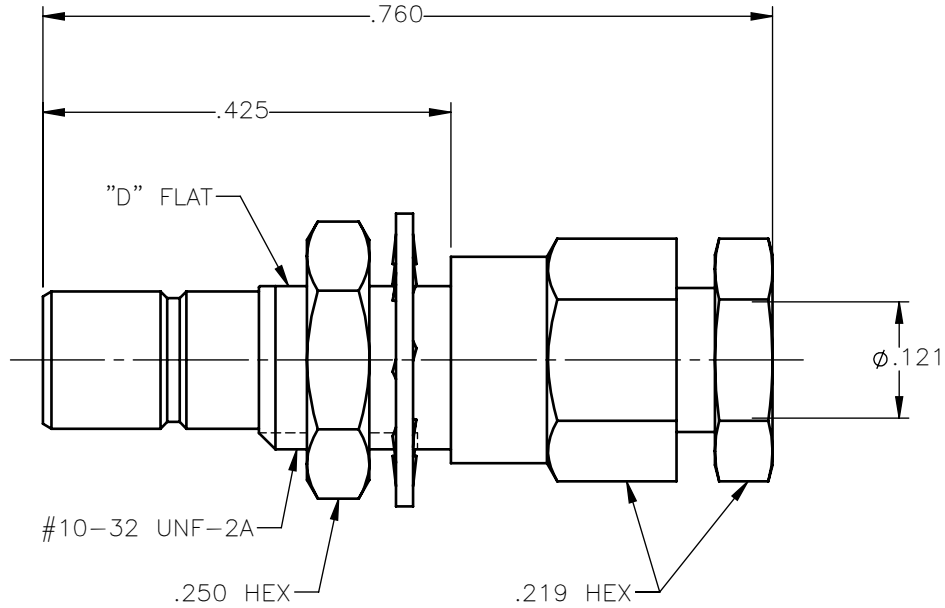


PANEL CUT OUT



inches		
	Maxi	mini
A	.198	.192
B	.183	.177

REVISIONS			
REV.	DESCRIPTION	DATE	APPROVED
A	INITIAL RELEASE	03/06/18	C.E.





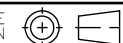
NOTES: M39012/70-0004

MATERIALS:

1. INSULATORS = VIRGIN WHITE TEFLON PER ASTM D1710, GRADE 1, TYPE I, CLASS "B".
2. LOCKWASHER = PHOSPHOR BRONZE PER ASTM B139, COPPER ALLOY C53400, TEMPER H04.
3. ALL OTHER METAL PARTS = BRASS PER ASTM B16, ALLOY C36000, TEMPER H02.

FINISHES:

1. CONTACT = GOLD PLATE PER ASTM B488-11, TYPE II, 50 μ in MIN, GRADE C, OVER 100 TO 200 μ in STRESS FREE SULFAMATE NICKEL PER AMS-QQ-N-290.
2. ALL OTHER METAL PARTS = GOLD PLATE PER ASTM B488-11, TYPE II, 30 μ in MIN, GRADE C OVER 100 TO 200 μ in COPPER STRIKE PER AMS 2418.

UNLESS OTHERWISE SPECIFIED DIMENSIONS ARE IN INCHES TOLERANCES ON	DWN:	DATE	 Property of Radiall This document cannot be reproduced or communicated to a third party without prior written permission of RADIALL.	
	C.E.	03/06/18		
DECIMAL	ANGLE	CHKD:	DATE	SMB STRAIGHT MALE JACK BULKHEAD MOUNT SOLDER CLAMP TYPE FOR RG-405 AND SIMILAR CABLES
		D.N.	03/06/18	
		APVD:	DATE	
		J.M	03/06/18	SIZE A FSCM NO. 19505 DWG NO. 2003-1541-010 REV A
REFERENCE:	MATERIALS & FINISHES:	SCALE 5:1		THIRD ANGLE PROJECTION 
ORIGINATED: C.E. DATE: 03/06/18	SEE NOTES	SHEET 1 OF 1		

2003-1541-010