

99044-1002

99044-2006

(7.21 REF)
.283

(16.0) PITCH
.63
(1.50 ^{+0.10}/₀)
.059 ^{+0.004}/₀
(2.00 ^{+0.5}/_{-0.5})
.079 ^{+0.003}/_{-0.005}

(4.0) PITCH
.157
NOTE 2

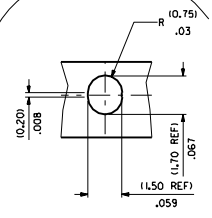
SECTION A - A

DIRECTION OF UNREELING

SECTION B - B

TO CUSTOMER ASSEMBLY MACHINE

MOLEX REEL



Scale 10:1

NOTES:

- MATERIAL :
1) CARRIER TAPE : VOLUME CONDUCTIVE POLYCARBONATE , 10.371 .014 REF THICK , BLACK
COVER TAPE : COLD SEAL POLYESTER , 10.061 .002 REF THICK , TRANSPARENT
- PITCH TOLERANCE OVER ANY 10 PITCHES ± 10.21 .008
- PEEL FORCE OF THE COVER TAPE IS 0.1N TO 1.0N
AT A MAXIMUM PEEL SPEED OF 1300I 11.81/min. ± 10%
- PACKAGING SPEC. TBA.
- REFERENCE TO IEC 286-3

REFERENCE ONLY

99044-3006

REEL DIMENSIONS
DO NOT SCALE

(400) PIECES ON A REEL
(1+REE) REELS / CARDBOARD BOX (PCTN-38)
(1200) PIECES IN THE CARDBOARD BOX

FOR PREVIOUS DRAWING ISSUES SEE MRL.		AG		DATE		REVISE ONLY ON CAD SYSTEM		SPL. REV.	
DESIGNER	DAB	DATE	09/11/15	FILE	90811-0201	REV	1	DATE	09/11/15
DATE	09/11/15	FILE	90811-0201	REV	1	DATE	09/11/15	DATE	09/11/15
SCALE	5:1	SCALE	5:1	SCALE	5:1	SCALE	5:1	SCALE	5:1
MOLEX EUROPE		MOLEX EUROPE		MOLEX EUROPE		MOLEX EUROPE		MOLEX EUROPE	
90811-0201		90811-0201		90811-0201		90811-0201		90811-0201	