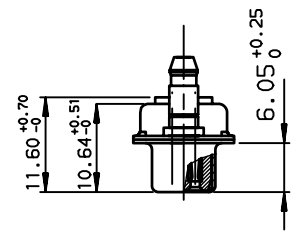
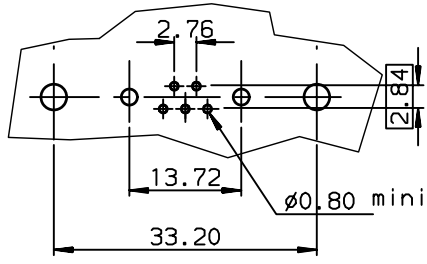


LAYOUT DIMENSIONS (after plating)  
CONNECTOR SIDE VIEW



TIN LEAD PART NUMBER

DAL7W2S300G30	M3
PART NUMBER	Threaded A

LEAD FREE PART NUMBER

DAL7W2S300G30LF	M3
PART NUMBER	Threaded A

GENERAL CHARACTERISTICS AND ROHS INFORMATIONS:  
SEE DRAWING C01-8639-0000

European Views

www.fciconnect.com		surface ISO 1302 ✓	tolerance std ISO 406 ISO 1101	projection mm	TOLERANCES UNLESS OTHERWISE SPECIFIED	
Dr	JARRY	1994/08/30	ANGULAR	0.X	±0.1	size
Eng	PESSON	1994/08/30	LINEAR	0.XX	±0.1	A3
Chr	LEGARE	1994/08/30	0.XX' ±2'	0.XXX	±0.1	Scale 1.5
Appr	LEGARE	1994/08/30	Product family	D-SUB		ECN LS06-0095
			Spec ref		-	
<b>SOCKET CONNECTOR WITH</b> TWO POWERS CONTACTS				title <b>C01-8639-0557</b>		Rev. <b>H</b>
catalog no				-		CUSTOMER sheet 1 of 1

rev	ecn no	dr	date
F	-	BAR	2004/02/27
G	LS05-001	MPE	2005/03/07
H	LS06-0095	LGO	2006/07/19
-	-	-	-
-	-	-	-
-	-	-	-



Copyright FCI.