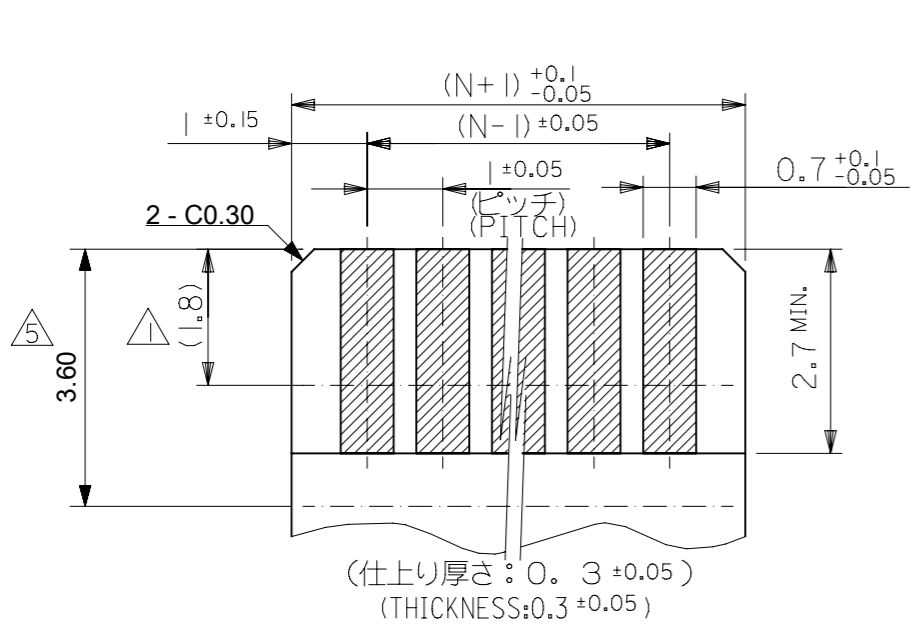


注記 NOTES

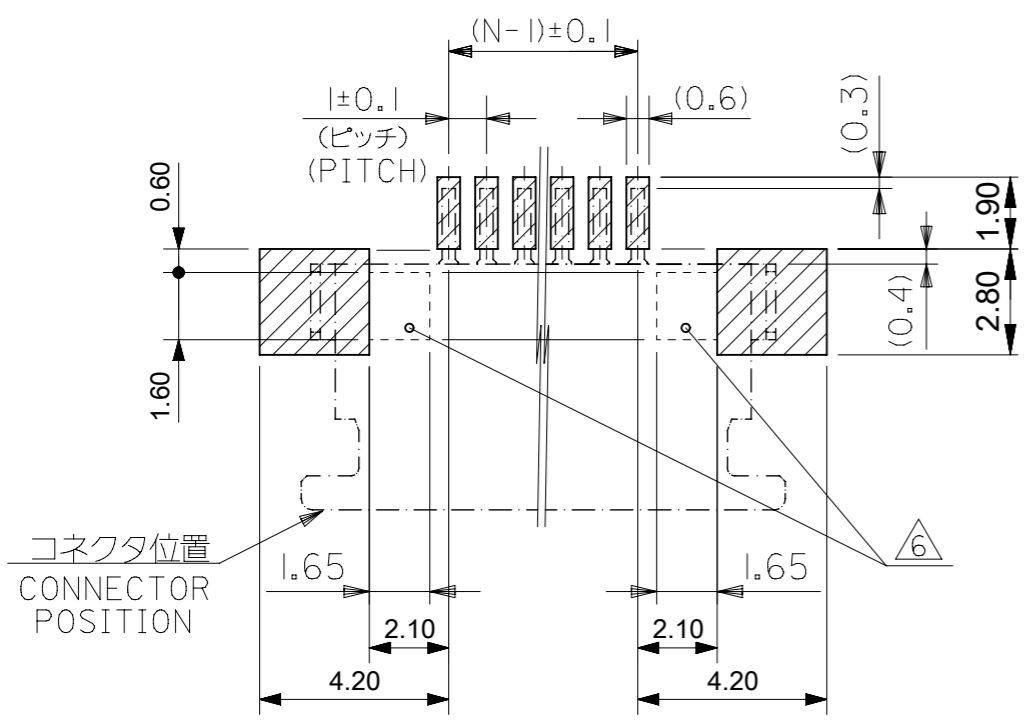
- △ 接点部までの嵌合長さ。  
LENGTH TO CONTACT POINT.
- 2. 使用材料 MATERIAL  
ハウジング : 46ナイロン, UL94V-0  
HOUSING : 46NYLON, UL94V-0  
アクチュエータ : PPS, UL94V-0  
ACTUATOR : PPS, UL94V-0  
ターミナル : リン青銅 (t=0.25)  
TERMINAL : PHOS-BRO.(t=0.25)  
メッキ : 錫ビスマスメッキ 1. 0マイクロメートル以上  
PLATING : TIN-BISMUTH 1.0 MICROMETER MINIMUM  
メッキ : ニッケル下地 1. 0マイクロメートル以上  
PLATING : NICKEL(UNDER PLATING) 1.0 MICROMETER MINIMUM  
金具 : 銅合金 (t=0.25)  
FITTING NAIL : COPPER ALLOY (t=0.25)  
メッキ : 錫メッキ 1. 0マイクロメートル以上  
PLATING : TIN 1.0 MICROMETER MINIMUM  
メッキ : ニッケル下地 1. 0マイクロメートル以上  
PLATING : NICKEL(UNDER PLATING) 1.0 MICROMETER MINIMUM
- △ 3. パターンはくり止め用金具  
FITTING NAIL FOR PREVENTION OF PEELING OF P.C.B.PATTERN.
- 4. エンボステープ梱包時は、アクチュエータがロックした状態とする。  
WHEN CONNECTOR IS SHIPPED, ACTUATOR SHOULD BE LOCKED.
- △ 5. FPC挿入深さ。  
INSERTION DEPTH OF FPC
- △ 6. パターン書き込み禁止エリア。  
NO FOOT PRINT AREA.
- 7. 本製品は 5 2 2 7 1 - \* \* 9 0 の鉛フリー品である。  
THIS PRODUCT IS LEAD FREE OF 52271-\*\*90
- △ 8. テール及び金具の平坦度は、0.15以下とする。  
TAIL AND NAIL COPLANARITY TO BE 0.15 MAXIMUM.

|      |      |    |                  |         |
|------|------|----|------------------|---------|
| 35   | 31.2 | 29 | 52271-3079       | 30      |
| 34   | 30.2 | 28 | 52271-2979       | 29      |
| 33   | 29.2 | 27 | 52271-2879       | 28      |
| 32   | 28.2 | 26 | 52271-2779       | 27      |
| 31   | 27.2 | 25 | 52271-2679       | 26      |
| 30   | 26.2 | 24 | 52271-2579       | 25      |
| 29.0 | 25.2 | 23 | 52271-2479       | 24      |
| 28.0 | 24.2 | 22 | 52271-2379       | 23      |
| 27.0 | 23.2 | 21 | 52271-2279       | 22      |
| 26.0 | 22.2 | 20 | 52271-2179       | 21      |
| 25.0 | 21.2 | 19 | 52271-2079       | 20      |
| 24.0 | 20.2 | 18 | 52271-1979       | 19      |
| 23.0 | 19.2 | 17 | 52271-1879       | 18      |
| 22.0 | 18.2 | 16 | 52271-1779       | 17      |
| 21.0 | 17.2 | 15 | 52271-1679       | 16      |
| 20.0 | 16.2 | 14 | 52271-1579       | 15      |
| 19.0 | 15.2 | 13 | 52271-1479       | 14      |
| 18.0 | 14.2 | 12 | 52271-1379       | 13      |
| 17.0 | 13.2 | 11 | 52271-1279       | 12      |
| 16.0 | 12.2 | 10 | 52271-1179       | 11      |
| 15.0 | 11.2 | 9  | 52271-1079       | 10      |
| 14.0 | 10.2 | 8  | 52271-0979       | 9       |
| 13.0 | 9.2  | 7  | 52271-0879       | 8       |
| 12.0 | 8.2  | 6  | 52271-0779       | 7       |
| 11.0 | 7.2  | 5  | 52271-0679       | 6       |
| 10.0 | 6.2  | 4  | 52271-0579       | 5       |
| 9.00 | 5.2  | 3  | 52271-0479       | 4       |
| C    | B    | A  | EMBOSSED PACKAGE | CKT No. |
|      |      |    | Order No.        |         |

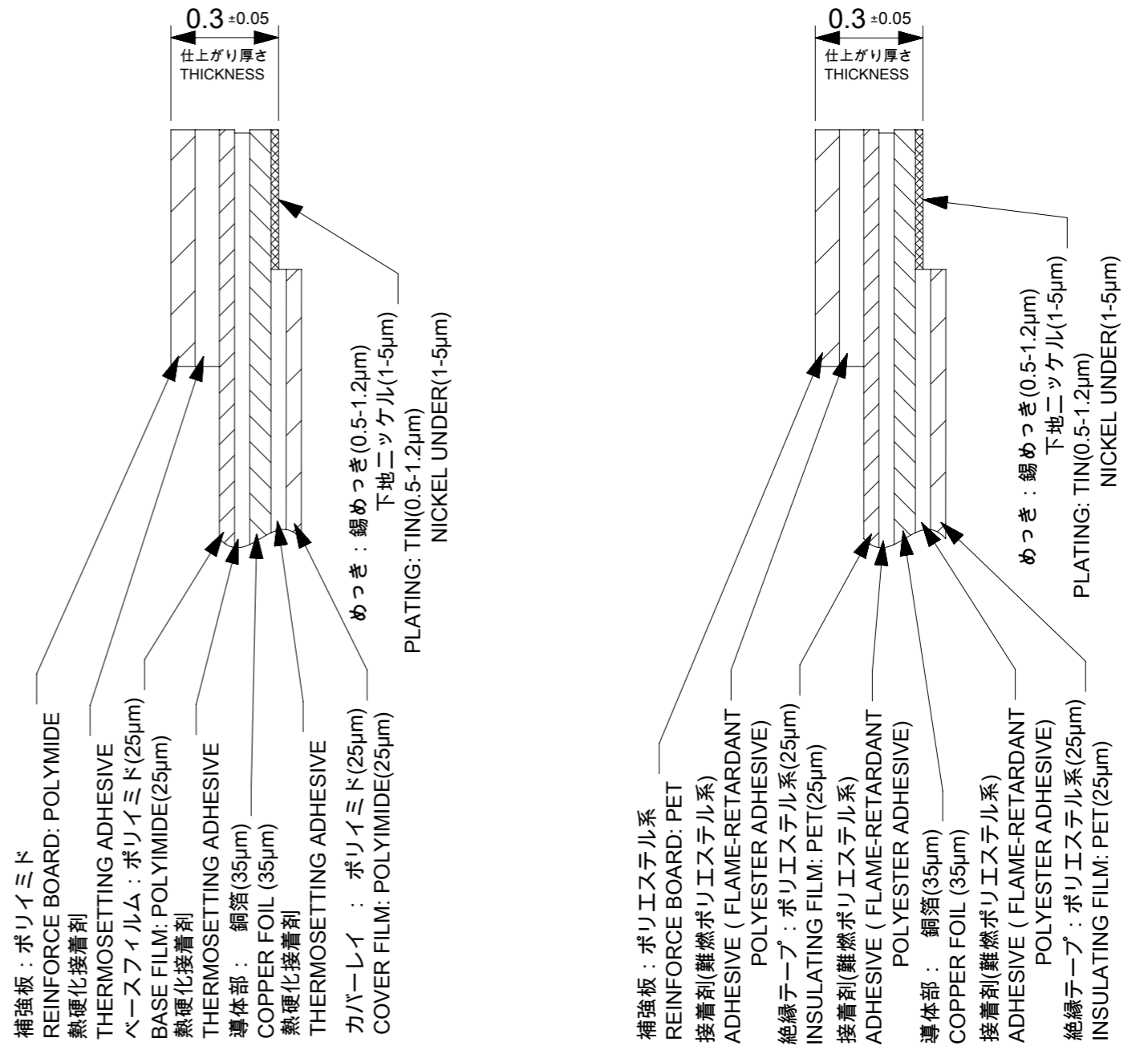
|   |       |                             |         |              |                 |
|---|-------|-----------------------------|---------|--------------|-----------------|
| THIS DRAWING CONTAINS INFORMATION THAT IS PROPRIETARY TO MOLEX ELECTRONIC TECHNOLOGIES, LLC AND SHOULD NOT BE USED WITHOUT WRITTEN PERMISSION |       | CURRENT REV DESC:           |         | <b>molex</b> |                 |
| DIMENSION UNITS   | SCALE | EC NO: 672151               |         |              |                 |
| mm  | 8:1   | DRWN: DGONDO 2021/08/02     |         |              |                 |
| GENERAL TOLERANCES (UNLESS SPECIFIED)   |       | CHK'D: TKON 2021/08/03      |         |              |                 |
| ANGULAR TOL ± 3.0°  |       | APPR: SHOSHIKAWA 2021/08/03 |         |              |                 |
| 4 PLACES ± 0.2  |       | INITIAL REVISION:           |         |              |                 |
| 3 PLACES ± 0.2  |       | DRWN: HKAWABATA 2004/03/18  |         |              |                 |
| 2 PLACES ± 0.2  |       | APPR: MSASAO 2004/03/19     |         |              |                 |
| 1 PLACE ± 0.25  |       | DOCUMENT NUMBER             |         |              |                 |
| 0 PLACES ± 0.3  |       | SD-52271-036                |         |              |                 |
| DRAFT WHERE APPLICABLE MUST REMAIN WITHIN DIMENSIONS  |       | THIRD ANGLE PROJECTION      | DRAWING | SERIES       | MATERIAL NUMBER |
|   |       |                             | A3-SIZE | 52271        | SEE TABLE       |
|   |       |                             |         |              | CUSTOMER        |
|   |       |                             |         |              | GENERAL MARKET  |
|   |       |                             |         |              | SHEET NUMBER    |
|   |       |                             |         |              | 1 OF 2          |



(仕上り厚さ: 0.3 ± 0.05)  
(THICKNESS: 0.3 ± 0.05)  
適合FPC/FFC推奨寸法  
APPLICABLE FPC/FFC RECOMMENDED DIMENSION



パターン推奨寸法 (参考)  
RECOMMENDED PATTERN DIM.(REF.)  
SCALE 5:1



FPC構成推奨仕様  
RECOMMENDED STRUCTURE OF FPC

FFC構成推奨仕様  
RECOMMENDED STRUCTURE OF FFC

FPC/FFCについて:  
抜き方向は、導体側から補強板側を推奨致します。  
尚、接着剤の接点部への付着は導通不良の原因になりますので、  
染み出しが無い様お願い致します。

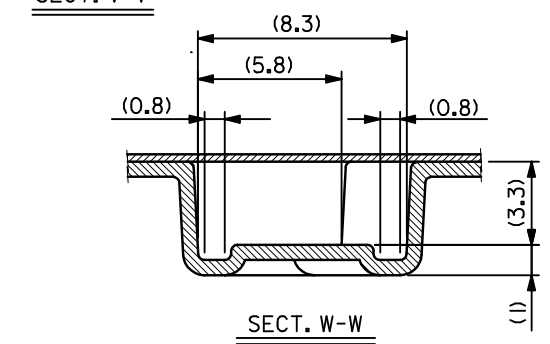
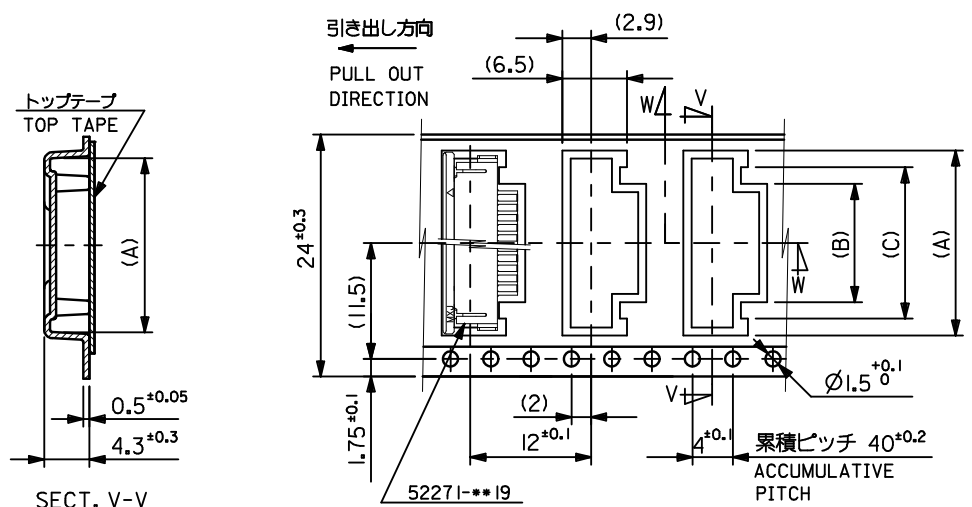
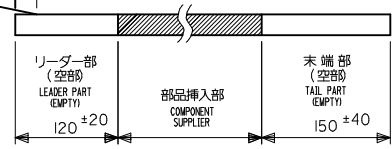
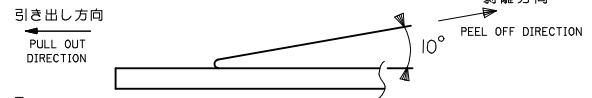
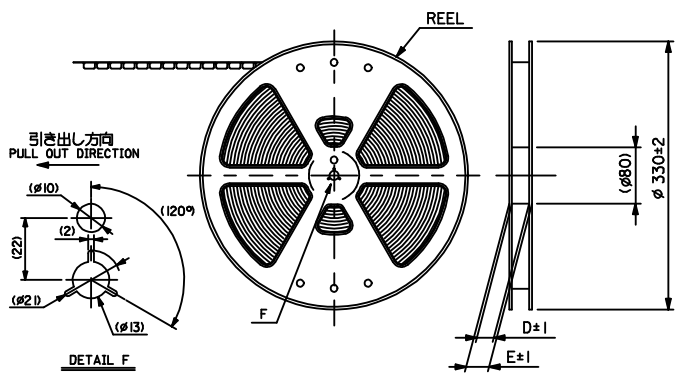
ABOUT FPC/FFC:  
RECOMMENDED PUNCHER DIRECTION:  
FROM CONDUCTOR SIDE TO STIFFNER SIDE  
PLEASE PUT APPROPRIATE AMOUNT OF ADHESIVE ON ADHEREND  
BECAUSE THERE IS A POSSIBILITY THAT THE EXTRA ADHESIVE  
CAUSES THE DEFECT IN ELECTRICAL CONTINUITY.

|   |        |                   |            |   |                |
|---|--------|-------------------|------------|---|----------------|
| THIS DRAWING CONTAINS INFORMATION THAT IS PROPRIETARY TO MOLEX ELECTRONIC TECHNOLOGIES, LLC AND SHOULD NOT BE USED WITHOUT WRITTEN PERMISSION |        | CURRENT REV DESC: |            | <b>molex</b>  |                |
| DIMENSION UNITS   | SCALE  |                   |            |   |                |
| mm  | 10:1   |                   |            | 1.0 FPC CONN ZIF SMT<br>(BOTTOM CONTACT) - LEAD FREE- |                |
| GENERAL TOLERANCES<br>(UNLESS SPECIFIED)  |        |                   |            | PRODUCT CUSTOMER DRAWING                              |                |
| ANGULAR TOL   | ± 3.0° |                   |            | DOCUMENT NUMBER                                       |                |
| 4 PLACES  | ± 0.2  | EC NO: 672151     | 2021/08/02 | SD-52271-036  |                |
| 3 PLACES  | ± 0.2  | DRWN: DGONDO      | 2021/08/03 | DOC TYPE  | DOC PART       |
| 2 PLACES  | ± 0.2  | CHK'D: TKON       | 2021/08/03 | PSD   | 001            |
| 1 PLACE   | ± 0.25 | APPR: SHOSHIKAWA  | 2021/08/03 | REVISION  | F              |
| 0 PLACES  | ± 0.3  | INITIAL REVISION: |            | SHEET NUMBER  |                |
| DRAFT WHERE APPLICABLE<br>MUST REMAIN<br>WITHIN DIMENSIONS  |        | DRWN: HKAWABATA   | 2004/03/18 | MATERIAL NUMBER                                       | CUSTOMER       |
| THIRD ANGLE PROJECTION  |        | APPR: MSASAO      | 2004/03/19 | SEE SHEET 1   | GENERAL MARKET |
| DRAWING   |        | SERIES            |            | SHEET NUMBER  |                |
| A3-SIZE   |        | 52271             |            | 2 OF 2  |                |

NOTES

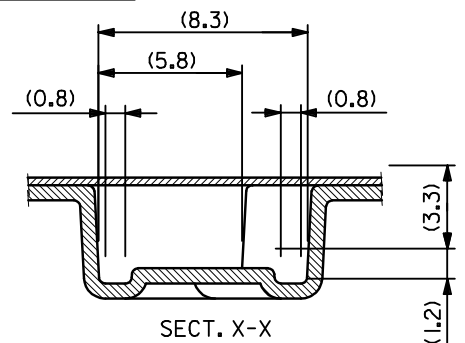
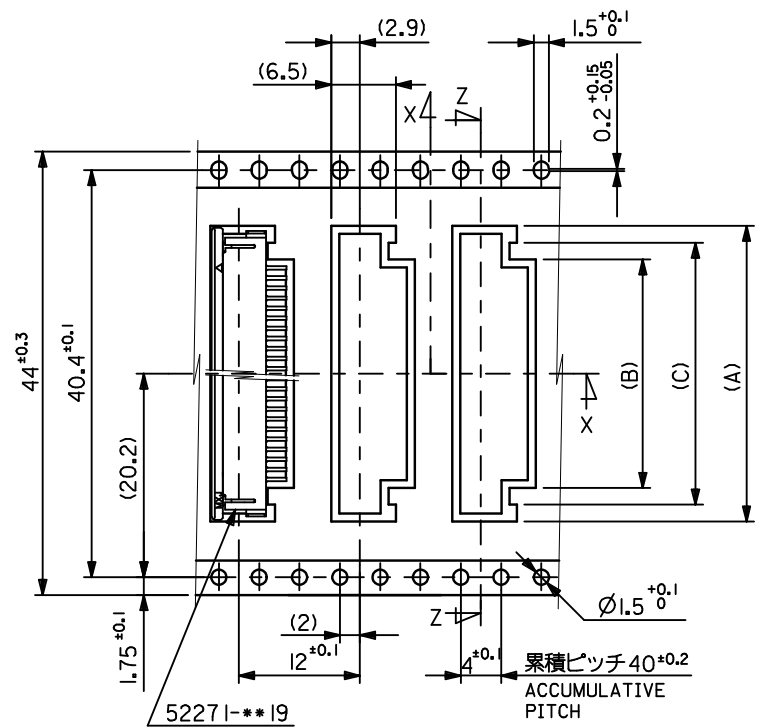
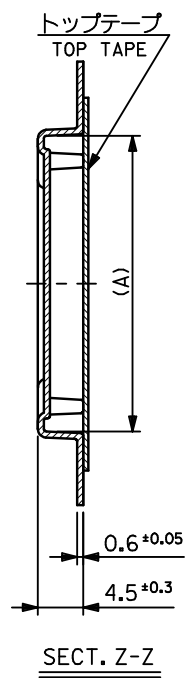
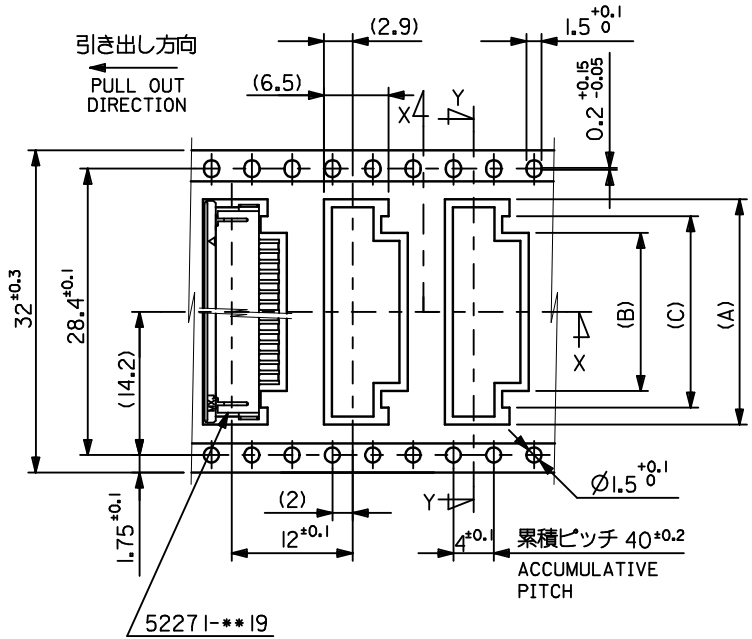
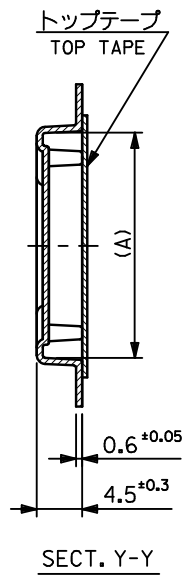
- 製品番号 52271-\*\*-19 の梱包状態はアクチュエータがロックした状態とする。  
IN THE PACKAGE, ACTUATOR OF PART NO. 52271-\*\*-19 SHOULD BE LOCKED RE DETAILED DIMENSIONS, SEE SD-52271-036.
- 梱包数量: 1000個/リール  
NUMBER OF CONNECTORS: 1000 PCS/REEL
- リードテープ長さ LEAD TAPE LENGTH  

|   |  |
|---|--|
| トップテープ<br>リーダー部<br>TOP TAPE LEADER PART | トップテープ<br>未接着部<br>TOP TAPE NON-BONDED PART |
| 175 ±25                                 | 25 ±5                                      |
- トップテープの剥離強度: 0.1~1.3N (10~130gf) (剥離方向は下図参照)  
尚、本規格値は、出荷時に適用。(但し、輸送時に剥離が発生しない事。)  
PEELING OFF FORCE OF TOP TAPE: 0.1~1.3N (10~130gf)  
(PEELING DIRECTION AS SHOWN IN FOLLOWING FIG.)  
THIS REQUIREMENT SHOULD BE APPLIED AT SHIPMENT  
PEEL OFF SHOULD NOT BE ALLOWED, DURING TRANSPORTATION
- 材料 (MATERIAL)  
キャリアテープ (CARRIER TAPE): ポリプロピレン (POLYPROPYLENE)  
トップテープ (TOP TAPE): PET, PE, PEF  
リール (REEL): ポリスチレン (PS) <リサイクル材を含む>  
POLYSTYRENE (PS) <RECYCLE MATERIAL CONTAINED>
- 本製品は52271-\*\*-19の鉛フリー品である。  
THIS PRODUCT IS LEAD FREE OF 52271-\*\*-19.
- 本製品は乾燥剤入り、ハイバリア梱包仕様である。  
THIS PRODUCT IS HIGH BARRIER PACKAGE WITH DESICCANT.



|           |             |                    |    |      |      |            |     |              |            |
|-----------|-------------|--------------------|----|------|------|------------|-----|--------------|------------|
| 24        | 29.4        | 25.4               | 15 | 11.4 | 18.3 | 52271-1179 | 11  |              |            |
|           |             |                    | 14 | 10.4 | 17.3 | -1079      | 10  |              |            |
|           |             |                    | 13 | 9.4  | 16.3 | -0979      | 9   |              |            |
|           |             |                    | 12 | 8.4  | 15.3 | -0879      | 8   |              |            |
|           |             |                    | 11 | 7.4  | 14.3 | -0779      | 7   |              |            |
|           |             |                    | 10 | 6.4  | 13.3 | -0679      | 6   |              |            |
|           |             |                    | 9  | 5.4  | 12.3 | -0579      | 5   |              |            |
|           |             |                    | 8  | 4.4  | 11.3 | 52271-0479 | 4   |              |            |
| MODEL NO. | 52271-**-19 | CARRIER TAPE WIDTH | E  | D    | (C)  | (B)        | (A) | MATERIAL NO. | 種数<br>CKT. |

|  |             |                                       |       |                            |                    |  |                        |   |  |
|--|-------------|---------------------------------------|-------|----------------------------|--------------------|--|------------------------|---|--|
| REVISED<br>EC NO: J2009-2061<br>DRWN:TKON 2009/05/20<br>CHKD:HMATSUMOTO 2009/05/21<br>APPR:NIKI ITA 2009/05/21 | DESCRIPTION | GENERAL TOLERANCES (UNLESS SPECIFIED) |       | DIMENSION STYLE<br>MM ONLY |                    | SCALE<br>---   | DESIGN UNITS<br>METRIC | THIRD ANGLE PROJECTION  |  |
|  |             | 10 UNDER                              | ±0.2  | DRAWN BY<br>H.KAWABATA     | DATE<br>2004/03/12 | TITLE<br>EMBOSSED TAPE PACKAGE FOR 52271-**-19 -LEAD FREE- |                        |   |  |
|  |             | 10 OVER 30 UNDER                      | ±0.25 | CHECKED BY<br>K.TOJO       | DATE<br>2004/03/12 | MOLEX INCORPORATED   |                        |   |  |
|  |             | 30 OVER                               | ±0.3  | APPROVED BY<br>M.SASAO     | DATE<br>2004/03/12 | DOCUMENT NO.<br>SD-52271-037                               |                        |   |  |
| A  | REV         | ANGULAR                               | ±3    | SEE TABLE                  |                    | SHEET NO.<br>1 OF 3  |                        | THIS DRAWING CONTAINS INFORMATION THAT IS PROPRIETARY TO MOLEX INCORPORATED AND SHOULD NOT BE USED WITHOUT WRITTEN PERMISSION |  |



|    |      |       |    |      |       |            |      |       |       |    |
|----|------|-------|----|------|-------|------------|------|-------|-------|----|
| 44 | 49.4 | 45.4  | 31 | 27.4 | 34.35 | 52271-2779 | 27   |       |       |    |
|    |      |       | 30 | 26.4 | 33.35 | -2679      | 26   |       |       |    |
|    |      |       | 29 | 25.4 | 32.35 | -2579      | 25   |       |       |    |
|    |      |       | 28 | 24.4 | 31.35 | -2479      | 24   |       |       |    |
|    |      |       | 27 | 23.4 | 30.35 | -2379      | 23   |       |       |    |
|    |      |       | 26 | 22.4 | 29.35 | -2279      | 22   |       |       |    |
|    |      |       | 25 | 21.4 | 28.35 | -2179      | 21   |       |       |    |
|    |      |       | 24 | 20.4 | 27.35 | -2079      | 20   |       |       |    |
|    |      |       | 23 | 19.4 | 26.35 | -1979      | 19   |       |       |    |
|    |      |       | 22 | 18.4 | 25.35 | -1879      | 18   |       |       |    |
|    |      |       | 21 | 17.4 | 24.35 | -1779      | 17   |       |       |    |
|    |      |       | 20 | 16.4 | 23.35 | -1679      | 16   |       |       |    |
|    |      |       | 32 | 37.4 | 33.4  | 19         | 15.4 | 22.35 | -1579 | 15 |
|    |      |       |    |      |       | 18         | 14.4 | 21.35 | -1479 | 14 |
|    |      |       |    |      |       | 17         | 13.4 | 20.35 | -1379 | 13 |
| 16 | 12.4 | 19.35 |    |      |       | 52271-1279 | 12   |       |       |    |
|    |      |       |    |      |       |            |      |       |       |    |

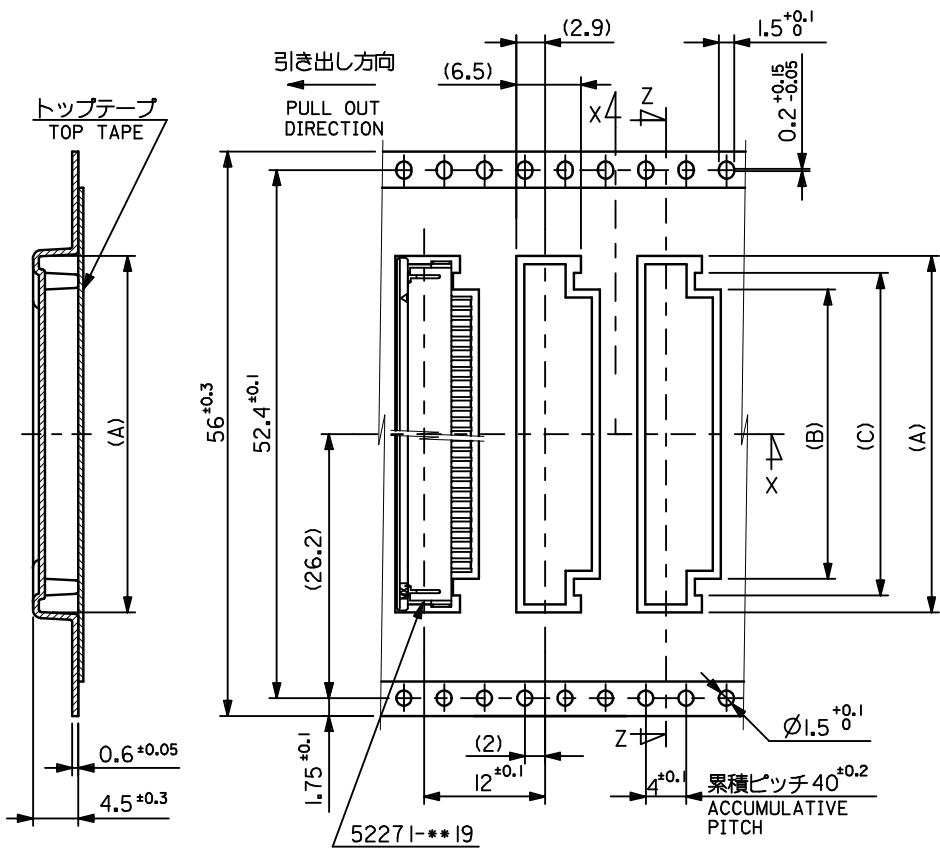
キャリアテープ幅  
CARRIER TAPE WIDTH  
fb\_frame\_A3\_J\_ME\_S  
Rev. E 2006/04/15

9 8 7 6 5 4 3 2 1

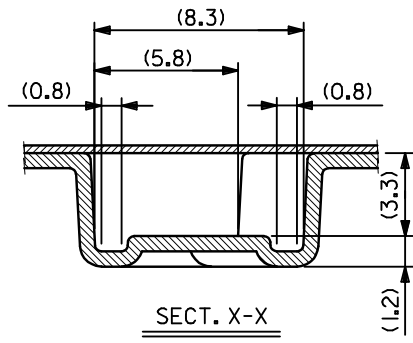
|   |  |   |                    |  |                        |                              |
|---|--|---|--------------------|--|------------------------|------------------------------|
| REVISED<br>EC NO.: J2009-2061<br>DRWN:TKON 2009/05/20<br>CHKD:HATSUMOTO 2009/05/21<br>APPR:NIKI ITA 2009/05/21<br>REV A | DESCRIPTION<br>GENERAL TOLERANCES (UNLESS SPECIFIED)<br>10 UNDER ±0.2<br>10 OVER 30 UNDER ±0.25<br>30 OVER ±0.3<br>ANGULAR ±3°<br>DRAFT WHERE APPLICABLE MUST REMAIN WITHIN DIMENSIONS | DIMENSION STYLE<br>MM ONLY  | SCALE<br>---       | DESIGN UNITS<br>METRIC                                     | THIRD ANGLE PROJECTION |                              |
|   |  | DRAWN BY<br>H. KAWABATA   | DATE<br>2004/03/12 | TITLE<br>EMBOSSED TAPE PACKAGE FOR 52271-**-19 -LEAD FREE- |                        |                              |
|   |  | CHECKED BY<br>K. TOJO   | DATE<br>2004/03/12 | MOLEX INCORPORATED   |                        |                              |
|   |  | APPROVED BY<br>M. SASAO   | DATE<br>2004/03/12 | MATERIAL NO.<br>SEE TABLE                                  |                        | DOCUMENT NO.<br>SD-52271-037 |
| SIZE<br>A3  |  | THIS DRAWING CONTAINS INFORMATION THAT IS PROPRIETARY TO MOLEX INCORPORATED AND SHOULD NOT BE USED WITHOUT WRITTEN PERMISSION |                    |  |                        |                              |

52271-\*\*-79  
MODEL NO.

SHEET NO.  
2 OF 3



SECT. Z-Z



SECT. X-X

|                                |      |      |     |      |       |              |             |
|--------------------------------|------|------|-----|------|-------|--------------|-------------|
| 56                             | 61.4 | 57.4 | 34  | 30.4 | 37.35 | 52271-3079   | 30          |
|                                |      |      | 33  | 29.4 | 36.35 | 52271-2979   | 29          |
|                                |      |      | 32  | 28.4 | 35.35 | 52271-2879   | 28          |
| キャリアテープ幅<br>CARRIER TAPE WIDTH | E    | D    | (C) | (B)  | (A)   | MATERIAL NO. | 種 数<br>CKT. |

tb\_frame\_A3\_J\_ME\_S  
Rev. E 2006/04/15

|  |   |                         |                            |                    |              |  |                           |                              |  |
|--|---|-------------------------|----------------------------|--------------------|--------------|--|---------------------------|------------------------------|--|
| REVISED<br>EC NO.: J2009-2061<br>DRWN:TKON<br>CHK'D:HMATSUMOTO<br>APPR:NIKI ITA<br>2009/05/20<br>2009/05/21<br>2009/05/21        | GENERAL TOLERANCES<br>(UNLESS SPECIFIED)                                  |                         | DIMENSION STYLE<br>MM ONLY |                    | SCALE<br>--- | DESIGN UNITS<br>METRIC   | THIRD ANGLE<br>PROJECTION |                              |  |
|  | 10 UNDER ±0.2<br>10 OVER 30 UNDER ±0.25<br>30 OVER ±0.3                   | DRAWN BY<br>H. KAWABATA |                            | DATE<br>2004/03/12 |              | TITLE<br>EMBOSSED TAPE PACKAGE<br>FOR 52271-**-19<br>-LEAD FREE- |                           |                              |  |
|  | ANGULAR ±3°<br>DRAFT WHERE APPLICABLE<br>MUST REMAIN<br>WITHIN DIMENSIONS | CHECKED BY<br>K. TOJO   |                            | DATE<br>2004/03/12 |              | MOLEX INCORPORATED   |                           |                              |  |
|  | A   | APPROVED BY<br>M. SASAO |                            | DATE<br>2004/03/12 |              | MATERIAL NO.<br>SEE TABLE  |                           | DOCUMENT NO.<br>SD-52271-037 |  |
| THIS DRAWING CONTAINS INFORMATION THAT IS PROPRIETARY TO MOLEX<br>INCORPORATED AND SHOULD NOT BE USED WITHOUT WRITTEN PERMISSION |   |                         |                            |                    |              | SHEET NO.<br>3 OF 3  |                           |                              |  |