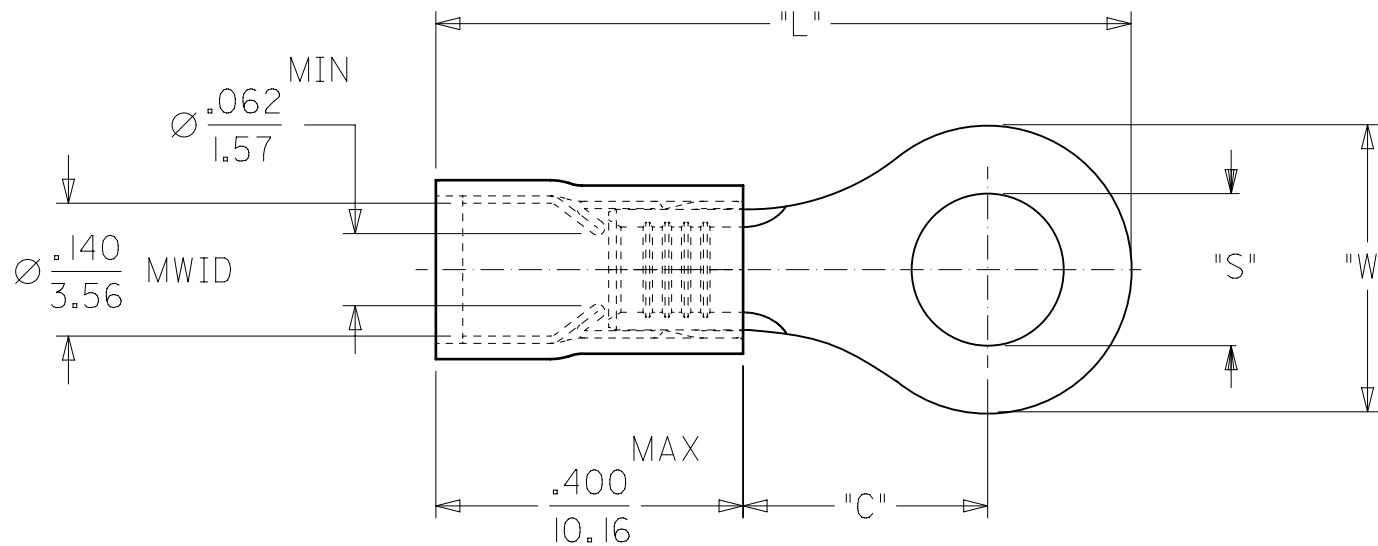
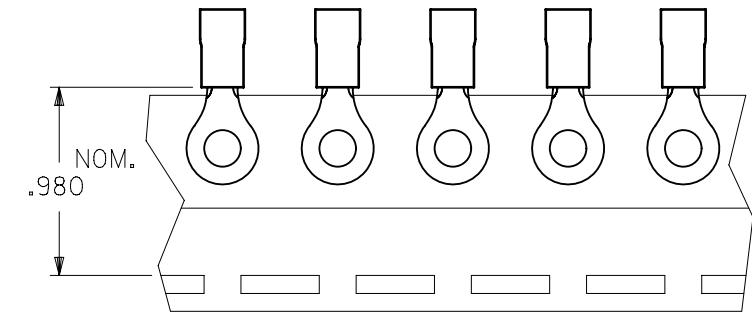


	10	9	8	7	6	5	4	3	2	1	
F	MATERIAL NUMBER	ALTERNATE NUMBER	STUD SIZE	"S"	"W"	Ⓢ "C" MIN	Ⓢ "L" MAX	PACKAGING			
	190730005	AA-820-02	2	.094/(2.38)	.23(5.7)	.16(4.0)	.71(18.0)	LOOSE PIECE			
	190730007	AA-820-04	4	.119/(3.02)	.23(5.7)	.16(4.0)	.71(18.0)				
	190730009	AA-820-06	6	.146/(3.71)	.23(5.7)	.16(4.0)	.71(18.0)				
	190730011	AA-821-06	6	.146/(3.71)	.31(7.9)	.27(6.9)	.87(22.0)				
	190730013	AA-821-08	8	.173/(4.39)	.31(7.9)	.27(6.9)	.87(22.0)				
	190730017	AA-821-10	10	.198/(5.03)	.31(7.9)	.27(6.9)	.87(22.0)				
	190730020	AA-821-209	5MM	.209/(5.30)	.31(7.9)	.27(6.9)	.87(22.0)	TAPE MOUNTED			
E	190730008	AA-820-04T	4	.119/(3.02)	.23(5.7)	.16(4.0)	.71(18.0)				
	190730010	AA-820-06T	6	.146/(3.71)	.23(5.7)	.16(4.0)	.71(18.0)				
	190730012	AA-821-06T	6	.146/(3.71)	.31(7.9)	.27(6.9)	.87(22.0)				
	190730015	AA-821-08T	8	.173/(4.39)	.31(7.9)	.27(6.9)	.87(22.0)				
	190730019	AA-821-10T	10	.198/(5.03)	.31(7.9)	.27(6.9)	.87(22.0)				
	190730021	AA-821-209T	5MM	.209/(5.30)	.31(7.9)	.27(6.9)	.87(22.0)				



NOTES:

1. MATERIAL: COPPER  
PLATING: ELECTROPLATE TIN
2. FERRULE: TIN-PLATED BRASS
3. INSULATION: RED NYLON 94V2.
4. MWID=MAXIMUM WIRE INSULATION DIA.
5. ALL DIMENSIONS IN INCHES/(MM).

Ⓢ 6. ASSEMBLY IS ROHS COMPLIANT.

THIS DRAWING CONTAINS INFORMATION THAT IS PROPRIETARY TO MOLEX ELECTRONIC TECHNOLOGIES, LLC AND SHOULD NOT BE USED WITHOUT WRITTEN PERMISSION											
DIMENSION UNITS <b>INCH/MM</b>		SCALE <b>4:1</b>		CURRENT REV DESC: OBSOLETE PART NUMBERS AS PER PCN#508521				<b>molex</b>		RING TONGUE TERMINAL AVIKRIMP 800 SERIES	
GENERAL TOLERANCES (UNLESS SPECIFIED)				EC NO: 667388 DRWN: SKANDB CHK'D: GGA APPR: GGA							
4 PLACES ±		±		2021/04/15				DOCUMENT NUMBER		DOC TYPE   DOC PART   REVISION	
3 PLACES ±		± 0.005		2021/07/05				SD-19073-002		PSD   001   D	
2 PLACES ±		± 0.13 ± 0.01		2021/07/05				PRODUCT CUSTOMER DRAWING			
1 PLACE ±		±		INITIAL REVISION:				MATERIAL NUMBER		CUSTOMER	
0 PLACES ±		±		DRWN: HEB APPR: RWD				SEE TABLE		GENERAL MARKET	
ANGULAR TOL ± 0.5°				2000/09/08 2000/09/08				SHEET NUMBER		1 OF 1	
DRAFT WHERE APPLICABLE MUST REMAIN WITHIN DIMENSIONS		THIRD ANGLE PROJECTION		DRAWING B-SIZE		SERIES 19073					