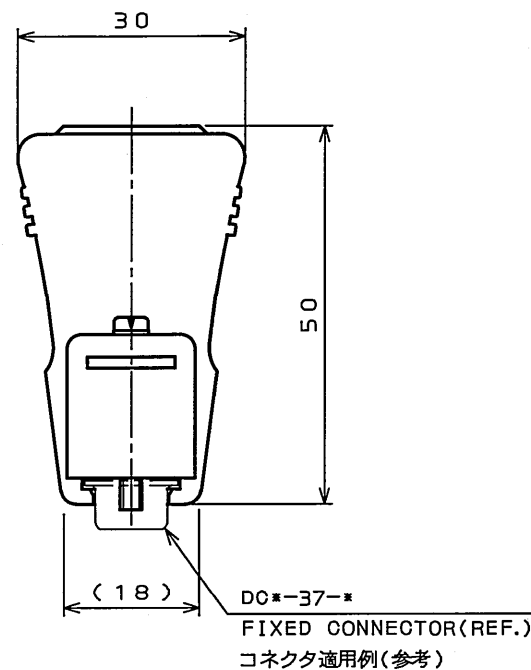
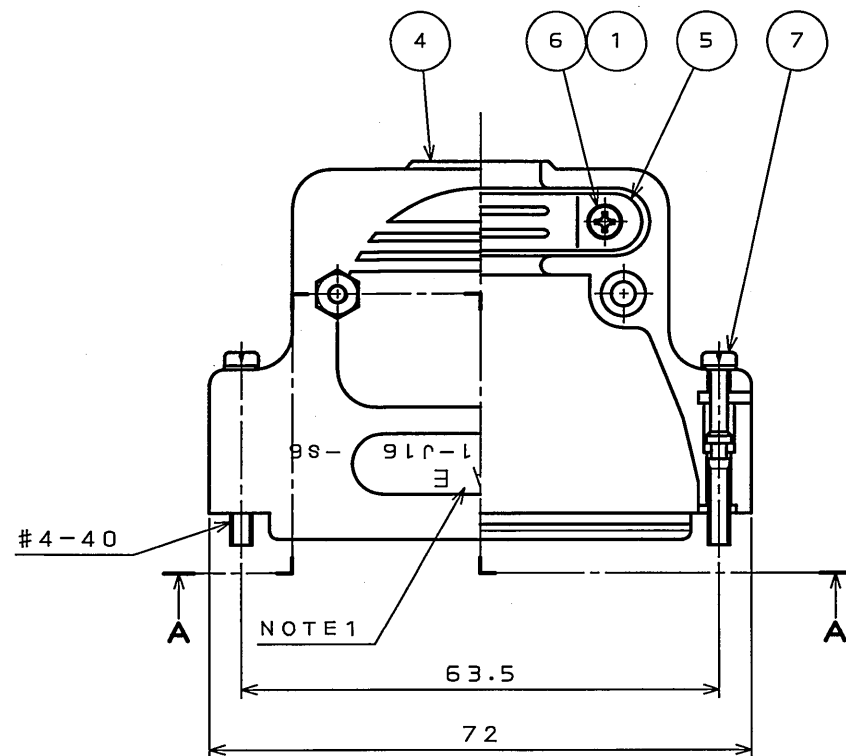
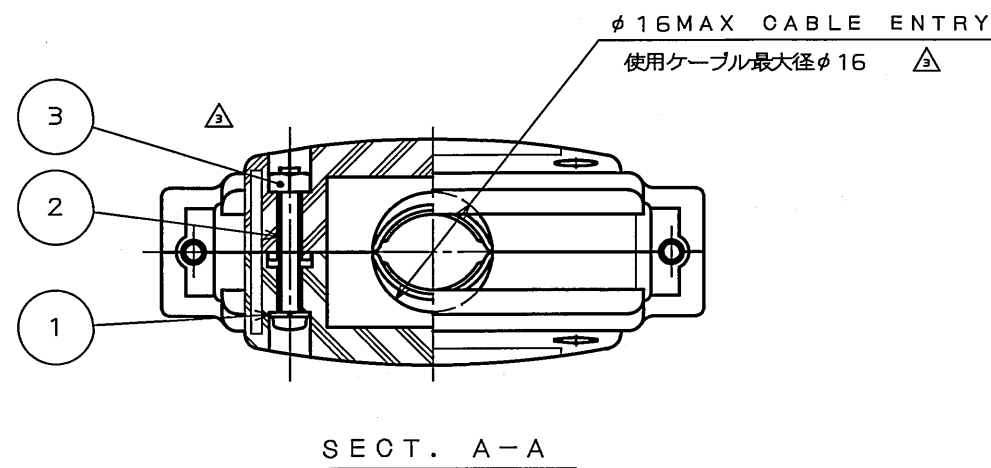


156101RS
(ON DRAWING)台架図

版数 REV.	年月日 DATE	DCN NO.	変更内容 DESCRIPTION	製図 DR.	担当 CHK.	査閲 APPD.	承認 APPD.
2	10.Nov.2005	058570	CHANGE TO BILINGUAL	---	Y.TAKAGI	A.TAGO	Y.KUBOTA
3	10.Apr.2006	059841	CORRECT AN ERROR	---	Y.TAKAGI	<i>A. Tago</i>	<i>Y. Kubota</i>



NOTE1.PART NUMBER & COMPANY LOGO "JAE" AS INDICATED.
"R" IS NOT MARKED ON CONNECTOR.
注1.図示の位置に品名,社名を表示する。
ただし、品名末尾の「R」は表示されない。



符号 NO.	名称 DESCRIPTION	個数 QTY.	材料 MATERIAL	仕上 FINISH	備考 REMARKS
7	SCREW LOCK ASSEMBLY	MAIN SCREW	2	STEEL	HEXAVALENT CHROMIUM FREE CHROMATE (TRIVALENT CHROMATE TREATMENT) ON ELECTROPLATED ZINC
		SPRING WASHER	2	STEEL	HEXAVALENT CHROMIUM FREE CHROMATE (TRIVALENT CHROMATE TREATMENT) ON ELECTROPLATED ZINC
6	CROSS PAN HEAD SCREW	2	STEEL	HEXAVALENT CHROMIUM FREE CHROMATE (TRIVALENT CHROMATE TREATMENT) ON ELECTROPLATED ZINC	M2.6
5	CLAMP SADDLE	2	STEEL or COPPER ALLOY	HEXAVALENT CHROMIUM FREE CHROMATE (TRIVALENT CHROMATE TREATMENT) ON ELECTROPLATED ZINC	
4	MAIN HOOD	2	ABS RESIN	(COLOR: LIGHT GRAY)	
3	HEXAGON NUT	2	COPPER ALLOY Δ	HEXAVALENT CHROMIUM FREE CHROMATE (TRIVALENT CHROMATE TREATMENT) ON ELECTROPLATED ZINC	M2.6
2	CROSS PAN HEAD SCREW	2	STEEL	HEXAVALENT CHROMIUM FREE CHROMATE (TRIVALENT CHROMATE TREATMENT) ON ELECTROPLATED ZINC	M2.6
1	SPRING WASHER	4	STEEL	HEXAVALENT CHROMIUM FREE CHROMATE (TRIVALENT CHROMATE TREATMENT) ON ELECTROPLATED ZINC	M2.6

仕様書 (SPECIFICATION)	第1版 (ORIGINAL DATE)	1.Aug.2005	尺度 (SCALE)	2:1	シリーズ (SERIES)	D-sub
製図 DR.	製図 DR.	---	名称 (TITLE)	DC-C1-J16-S6R		
担当 CHK.	担当 CHK.	Y.TAKAGI	質量 (MASS)	公差 (TOLERANCE)	図面番号 (DRAWING NO.)	SJ101951
査閲 APPD.	査閲 APPD.	---				
承認 APPD.	承認 APPD.	Y.KUBOTA				

DOF-0-212F(05.08)

