

Series: Domino

Description: UWB 2.7-8.2GHz GHz SMD Antenna

PART NUMBER: W3540



Features:

- Compact size:
12.5x10.6x0.8mm
- Weight 0.27g
- Keep out area:
13.75x20.15mm
- Omnidirectional pattern
- Fully SMD compatible
- RoHS Compliant

Applications:

- 2.7 – 8.2 GHz with minimum
10 dB Return Loss
- Ultra Wide Band radios
- Remote controls
- Key fobs
- M2M, IoT
- Transportation
- Security

All dimensions are in mm

Issue: 1716

In the effort to improve our products, we reserve the right to make changes judged to be necessary.

CONFIDENTIAL AND PROPRIETARY INFORMATION

This document contains confidential and proprietary information of Pulse Electronics, Inc. (Pulse) and is protected by copyright, trade secret and other state and federal laws. Its receipt or possession does not convey any rights to reproduce, disclose its contents, or to manufacture, use or sell anything it may describe. Reproduction, disclosure or use without specific written authorization of Pulse is strictly forbidden.

For more information:

Pulse Worldwide Headquarters
15255 Innovation Drive #100
San Diego, CA 92128
USA
Tel: 1-858-674-8100

Pulse/Larsen Antennas
18110 SE 34th St Bldg 2 Suite 250
Vancouver, WA 98683
USA
Tel: 1-360-944-7551

Europe Headquarters
Pulse GmbH & Do, KG
Zeppelinstrasse 15
Herrenberg, Germany
Tel: 49 7032 7806 0

Pulse (Suzhou) Wireless Products Co, Inc.
99 Huo Ju Road(#29 Bldg,4th Phase
Suzhou New District
Jiangsu Province, Suzhou 215009 PR China
Tel: 86 512 6807 9998



Description: UWB 2.7-8.2GHz GHz SMD Antenna

Series: Domino

PART NUMBER: W3540

ELECTRICAL SPECIFICATIONS

Antenna Type	
Frequency	2700-8200MHz
Nominal Impedance	50 Ω
VSWR	2:1
Radiation Pattern	Omni
Peak Gain	5.89dBi
Efficiency	81.3%
Polarization	Vertical
Power Withstanding	5W

MECHANICAL SPECIFICATIONS

Overall size	12.5X10.6x0.8 mm
Weight	0.27g
Antenna Color / Material	Green / FR4

ENVIRONMENTAL SPECIFICATIONS

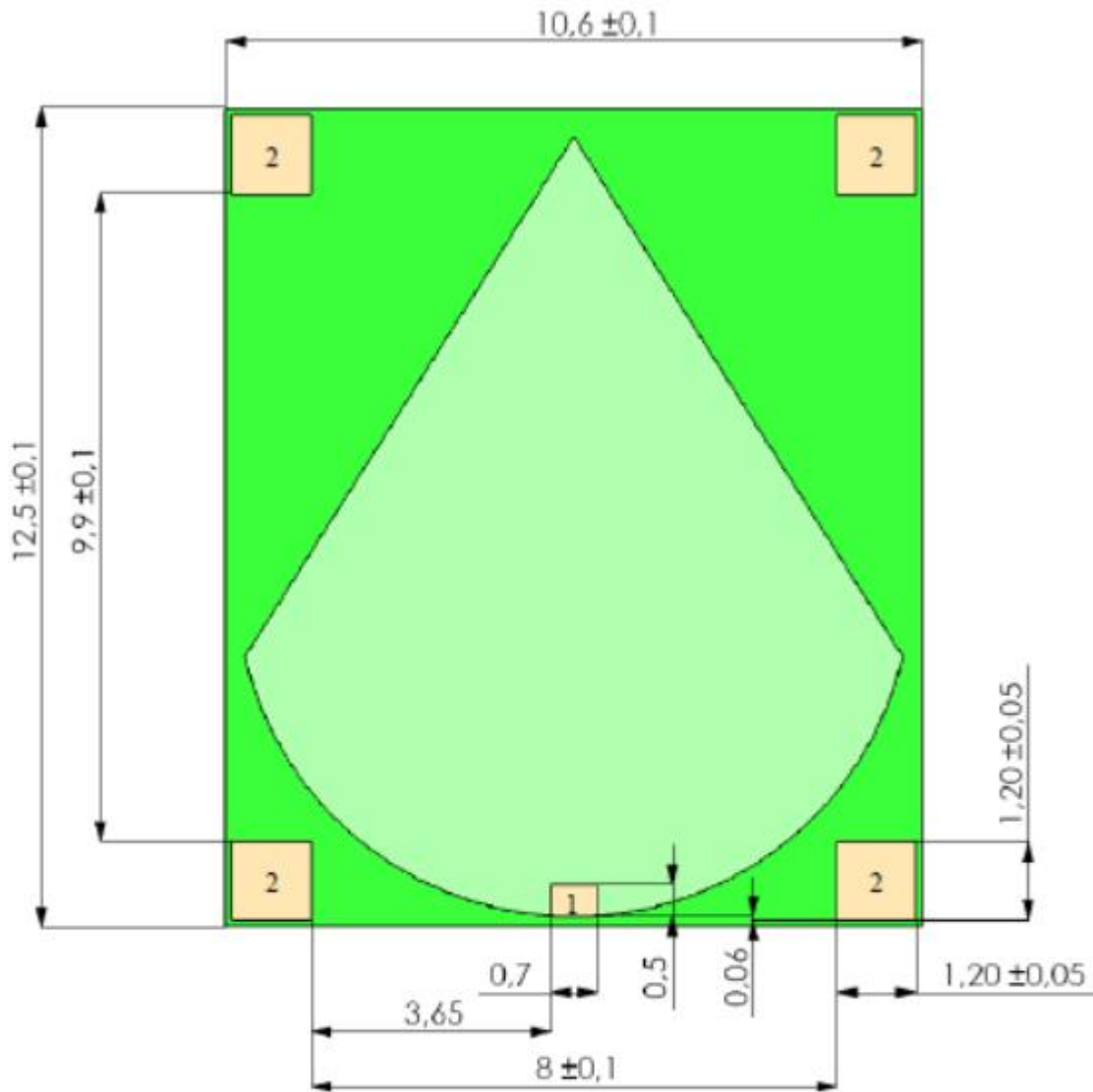
Operating Temperature	-40~+85° C
Storage Temperature	-40~+85° °
RoHS Compliant	Yes

Description: UWB 2.7-8.2GHz GHz SMD Antenna

Series: Domino

PART NUMBER: W3540

MECHANICAL DRAWING



No.	Pad Name	Pad Dimensions
1	Feed	0.7 x 0.5 mm
2	Fastening pads	1.2 x 1.2 mm

Issue: 1716

In the effort to improve our products, we reserve the right to make changes judged to be necessary.

CONFIDENTIAL AND PROPRIETARY INFORMATION

This document contains confidential and proprietary information of Pulse Electronics, Inc. (Pulse) and is protected by copyright, trade secret and other state and federal laws. Its receipt or possession does not convey any rights to reproduce, disclose its contents, or to manufacture, use or sell anything it may describe. Reproduction, disclosure or use without specific written authorization of Pulse is strictly forbidden.

Description: UWB 2.7-8.2GHz GHz SMD Antenna

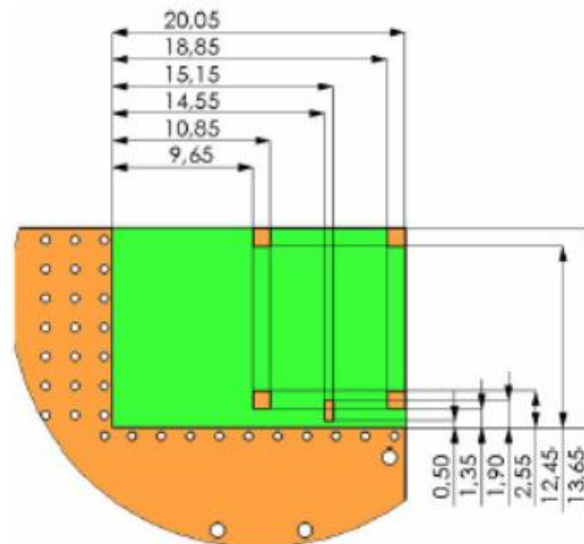
Series: Domino

PART NUMBER: W3540

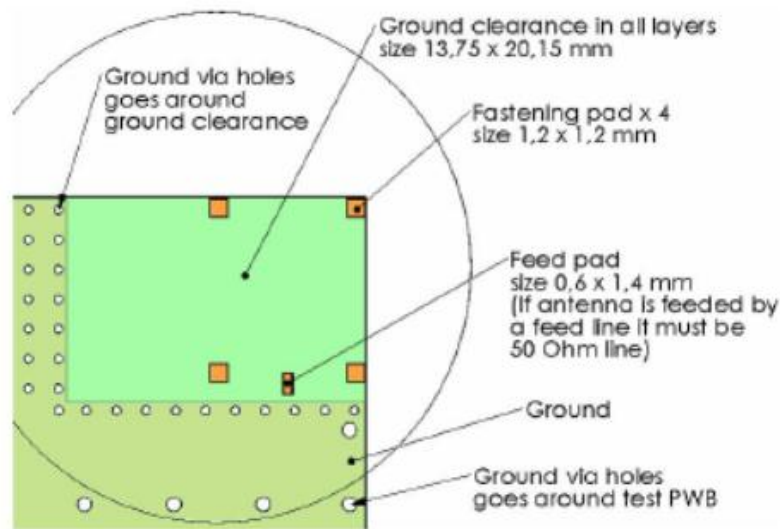
MECHANICAL DRAWING

Ground cleared under antenna, clearance area 20.15 mm x 13.75

Recommended test board layout for electrical characteristic measurement, test board outline size 100 x 50 mm



Ground clearance and pads size
Top copper



Issue: 1716

In the effort to improve our products, we reserve the right to make changes judged to be necessary.

CONFIDENTIAL AND PROPRIETARY INFORMATION

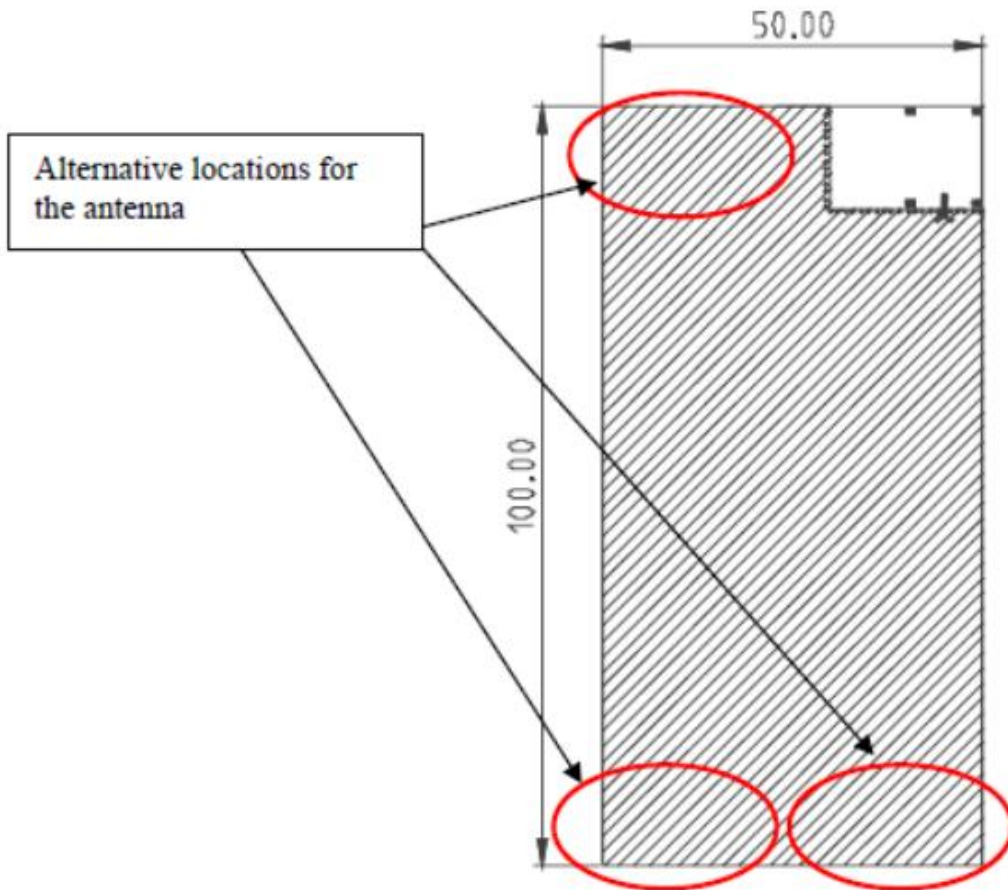
This document contains confidential and proprietary information of Pulse Electronics, Inc. (Pulse) and is protected by copyright, trade secret and other state and federal laws. Its receipt or possession does not convey any rights to reproduce, disclose its contents, or to manufacture, use or sell anything it may describe. Reproduction, disclosure or use without specific written authorization of Pulse is strictly forbidden.

Description: UWB 2.7-8.2GHz GHz SMD Antenna

Series: Domino

PART NUMBER: W3540

MECHANICAL DRAWING



- Feed line should be designed to match 50Ω characteristic impedance, depending on PWB material and thickness.
- Alternatively the clearance area may be located at the left upper corner of the printed wired board

Issue: 1716

In the effort to improve our products, we reserve the right to make changes judged to be necessary.

CONFIDENTIAL AND PROPRIETARY INFORMATION

This document contains confidential and proprietary information of Pulse Electronics, Inc. (Pulse) and is protected by copyright, trade secret and other state and federal laws. Its receipt or possession does not convey any rights to reproduce, disclose its contents, or to manufacture, use or sell anything it may describe. Reproduction, disclosure or use without specific written authorization of Pulse is strictly forbidden.

Description: UWB 2.7-8.2GHz GHz SMD Antenna

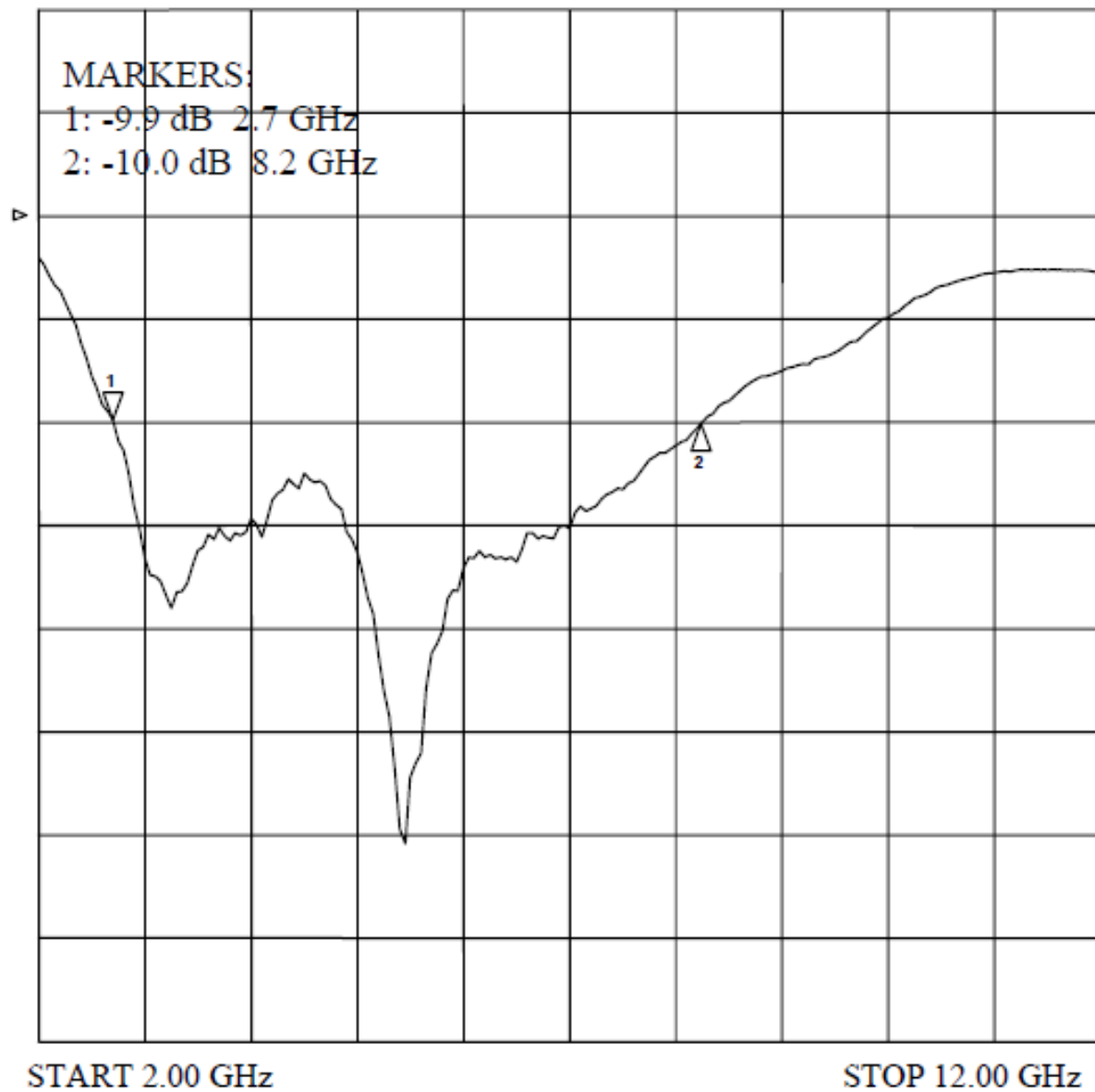
Series: Domino

PART NUMBER: W3540

CHARTS

Return Loss

SCALE 5.0 dB



Issue: 1716

In the effort to improve our products, we reserve the right to make changes judged to be necessary.

CONFIDENTIAL AND PROPRIETARY INFORMATION

This document contains confidential and proprietary information of Pulse Electronics, Inc. (Pulse) and is protected by copyright, trade secret and other state and federal laws. Its receipt or possession does not convey any rights to reproduce, disclose its contents, or to manufacture, use or sell anything it may describe. Reproduction, disclosure or use without specific written authorization of Pulse is strictly forbidden.

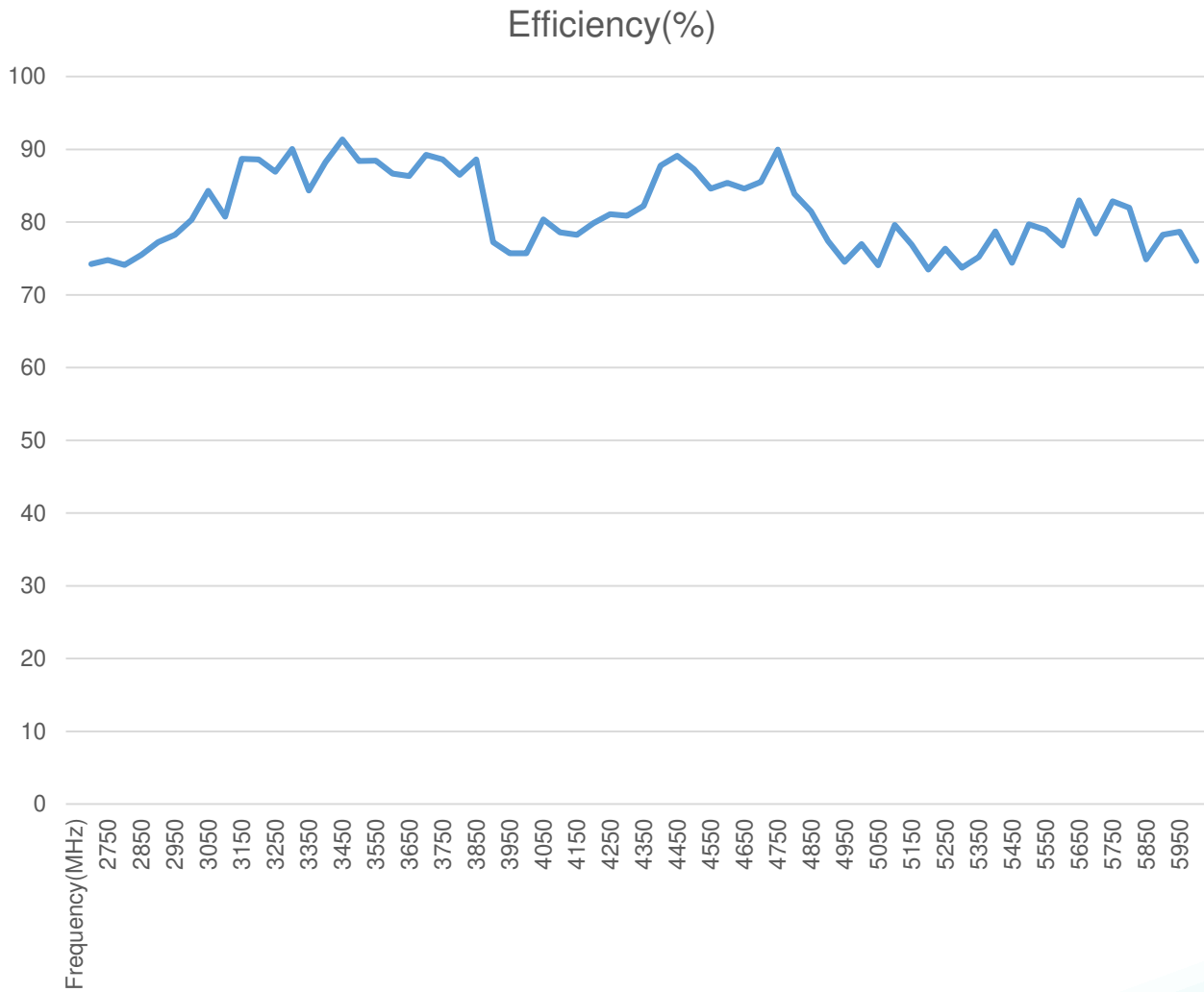
Description: UWB 2.7-8.2GHz GHz SMD Antenna

Series: Domino

PART NUMBER: W3540

CHARTS

Efficiency(%)



Issue: 1716

In the effort to improve our products, we reserve the right to make changes judged to be necessary.

CONFIDENTIAL AND PROPRIETARY INFORMATION

This document contains confidential and proprietary information of Pulse Electronics, Inc. (Pulse) and is protected by copyright, trade secret and other state and federal laws. Its receipt or possession does not convey any rights to reproduce, disclose its contents, or to manufacture, use or sell anything it may describe. Reproduction, disclosure or use without specific written authorization of Pulse is strictly forbidden.

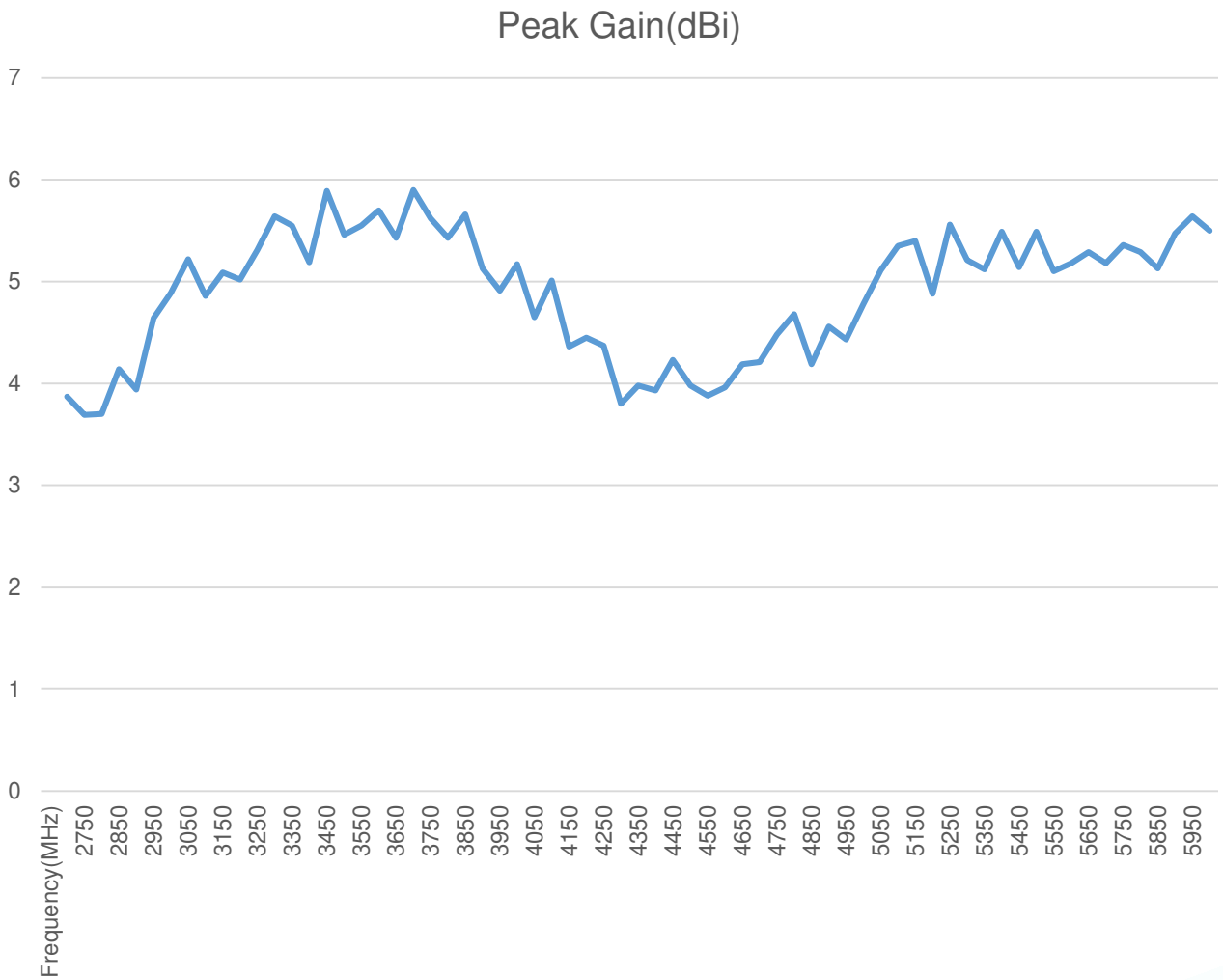
Description: UWB 2.7-8.2GHz GHz SMD Antenna

Series: Domino

PART NUMBER: W3540

CHARTS

Peak Gain(dBi)



Issue: 1716

In the effort to improve our products, we reserve the right to make changes judged to be necessary.

CONFIDENTIAL AND PROPRIETARY INFORMATION

This document contains confidential and proprietary information of Pulse Electronics, Inc. (Pulse) and is protected by copyright, trade secret and other state and federal laws. Its receipt or possession does not convey any rights to reproduce, disclose its contents, or to manufacture, use or sell anything it may describe. Reproduction, disclosure or use without specific written authorization of Pulse is strictly forbidden.

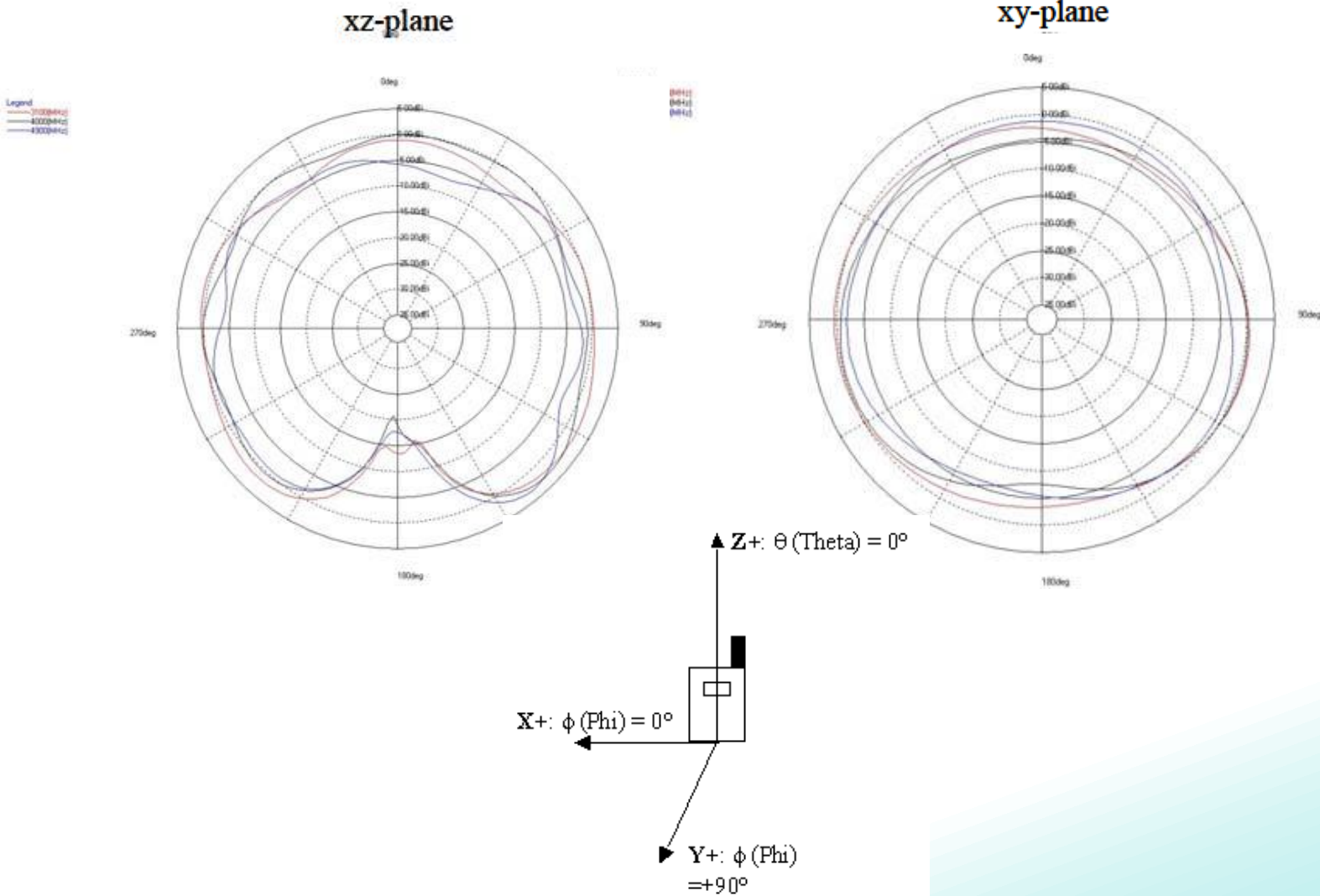


CHARTS

Free Space Radiation Pattern

Elevation Plane

Horizontal Plane



Issue: 1716

In the effort to improve our products, we reserve the right to make changes judged to be necessary.

CONFIDENTIAL AND PROPRIETARY INFORMATION

This document contains confidential and proprietary information of Pulse Electronics, Inc. (Pulse) and is protected by copyright, trade secret and other state and federal laws. Its receipt or possession does not convey any rights to reproduce, disclose its contents, or to manufacture, use or sell anything it may describe. Reproduction, disclosure or use without specific written authorization of Pulse is strictly forbidden.

Description: UWB 2.7-8.2GHz GHz SMD Antenna

Series: Domino

PART NUMBER: W3540

PACKAGING

2800pcs antennas per 13" REEL

4PCS REEL PER package box

Total 11200pcs antenna per package box

Package box: 350mm*350mm*120mm

Issue: 1716

In the effort to improve our products, we reserve the right to make changes judged to be necessary.

CONFIDENTIAL AND PROPRIETARY INFORMATION

This document contains confidential and proprietary information of Pulse Electronics, Inc. (Pulse) and is protected by copyright, trade secret and other state and federal laws. Its receipt or possession does not convey any rights to reproduce, disclose its contents, or to manufacture, use or sell anything it may describe. Reproduction, disclosure or use without specific written authorization of Pulse is strictly forbidden.