

**MATERIAL**

Glass-fibre polyamide based (PA) technopolymer, black colour, glossy finish.

**BOSS CAP**

Acetal resin based (POM) technopolymer, light-grey colour, push-fit assembly, removable by pressing on the outer edge (ELESA original design).

**STANDARD EXECUTION**

Black-oxide steel boss, reamed hole.

Assembly by means of a keyway or a transversal pin in the semi-machined hole f or a set screw (redrill and tap hole f).

**OTHER EXECUTIONS ON REQUEST**

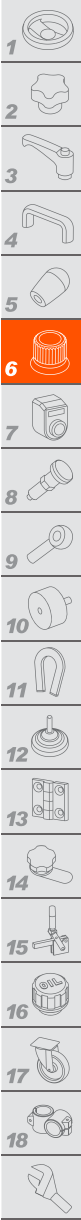
Standard metric holes.

**SPECIAL EXECUTIONS ON REQUEST**

On the surface of the boss cap words, marks, graphic symbols, etc. can be tampoprinted in colours.

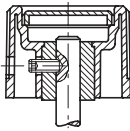
**ACCESSORIES ON REQUEST**

Ball and spring for clicking operation to be fitted in the assembly hole for knobs with diameter DIA ≥ 1.89 (Ø 48 mm) see ball and spring MS. (see page 713).

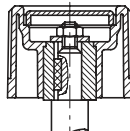


ELESA Original design

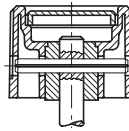
Assembly examples



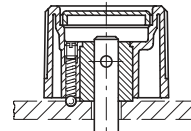
Assembly by means of a set screw



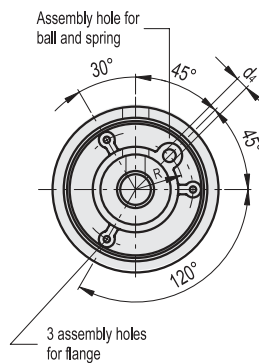
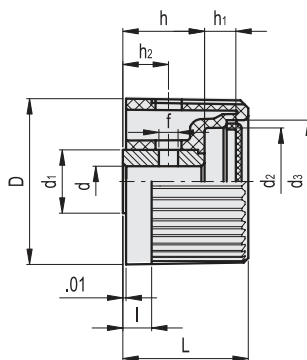
Assembly by means of a keyway



Assembly by means of a transversal pin



Assembly by means of a transversal pin and ball with adjustable pressure spring



**INCH**

Code	Description	D	d	L	l	d1	d2	d3	d4	h	h1	h2	f	R	⚖
930001	IZN.380/36 A-5/16	1.46	0.312	1.14	0.24	0.59	0.98	1.06	-	0.63	0.39	0.39	0.12	-	0.07
930101	IZN.380/40 A-3/8	1.65	0.375	1.26	0.28	0.71	1.14	1.22	-	0.67	0.43	0.43	0.16	-	0.11
930201	IZN.380/45 A-3/8	1.89	0.375	1.38	0.31	0.87	1.26	1.34	0.13	0.87	0.39	0.55	0.16	0.55	0.19
930301	IZN.380/50 A-1/2	2.05	0.500	1.54	0.35	0.87	1.46	1.54	0.17	0.87	0.51	0.55	0.16	0.59	0.2
930401	IZN.380/56 A-1/2	2.28	0.500	1.61	0.39	1.02	1.65	1.73	0.2	1.06	0.43	0.63	0.2	0.67	0.29
930451	IZN.380/63 A-1/2	2.48	0.500	1.73	0.43	1.02	1.89	1.97	0.24	1.18	0.39	0.63	0.2	0.75	0.34

Control elements