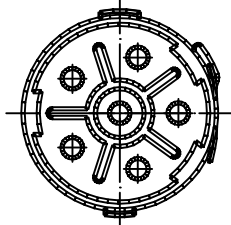
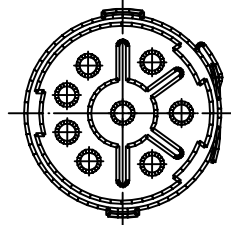


# Views from "X"

6-Pole  
(5+1)

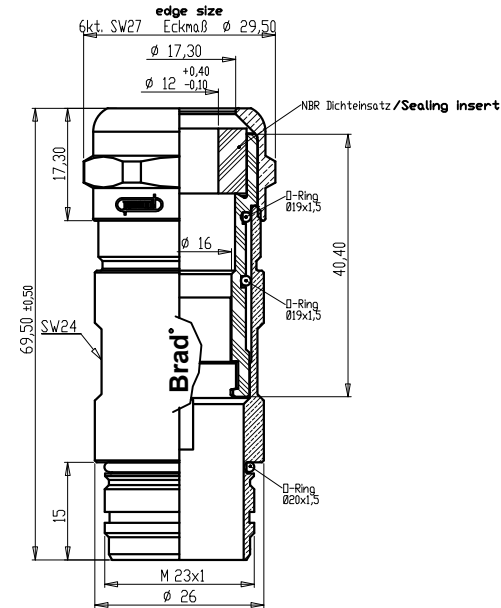


8-Pole



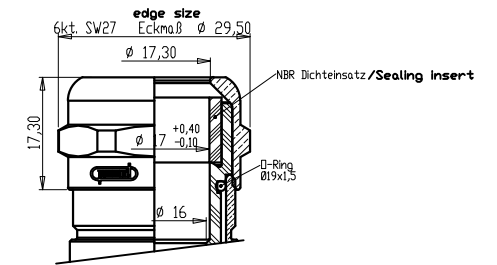
Cable Diameter

7 - 12 mm



Cable Diameter

11 - 17 mm



Cable Diameter		Crimp Contacts	Without Contacts
6 Pole (5+PE)	7 - 12mm	KAP6S06-105	KAP6S06-005
		1202330017	1202330019
	11 - 17mm	KAP6S06-109	KAP6S06-009
		1202330018	1202330020
	Crimp range*	0,75-2,5mm²	
8 Pole	7 - 12mm	KAP8S06-115	KAP8S06-005
		1202330021	1202330023
	11 - 17mm	KAP8S06-119	KAP8S06-009
		1202330022	1202330024
	Crimp range*	0,25-1,0mm²/0,75-2,5mm²	

\*Crimp range only applies to "Crimp Contacts" version

## Notes:

Tolerances (unless specified): DIN ISO 2768 m

DESCRIPTION EC NO: IPG2015-0907 DRWN: BBRAUCH 2014/11/18 CHKD: ZISMAYIL APPR: CBURGER	QUALITY SYMBOLS ▽ = 0 ▽ = 0	GENERAL TOLERANCES (UNLESS SPECIFIED)		DIMENSION STYLE MM	SCALE ---	DESIGN UNITS METRIC	THIRD ANGLE PROJECTION	
		mm	INCH	DRAWN BY BB	DATE 2008/11/19	FA M23 XP MA STR		
2	REV	4 PLACES	± ---	± ---	CHECKED BY JKO <td>DATE 2008/12/09 <td rowspan="2">molex</td> </td>	DATE 2008/12/09 <td rowspan="2">molex</td>	molex	
		3 PLACES	± ---	± ---	APPROVED BY	DATE		MATERIAL NO.
		2 PLACES	± 0.05	± ---	DRAFT WHERE APPLICABLE MUST REMAIN WITHIN DIMENSIONS			THIS DRAWING CONTAINS INFORMATION THAT IS PROPRIETARY TO MOLEX INCORPORATED AND SHOULD NOT BE USED WITHOUT WRITTEN PERMISSION
		1 PLACE	± 0.1	± ---	SIZE A3			
		0 PLACE	± ---	± ---				