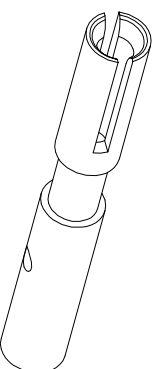
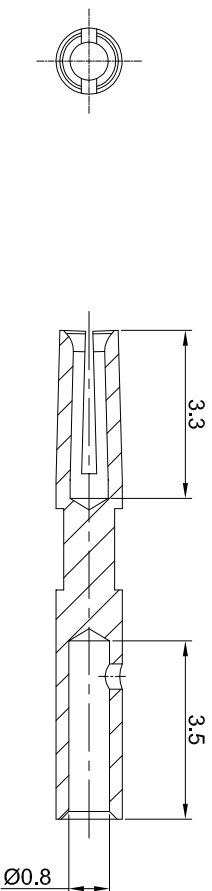
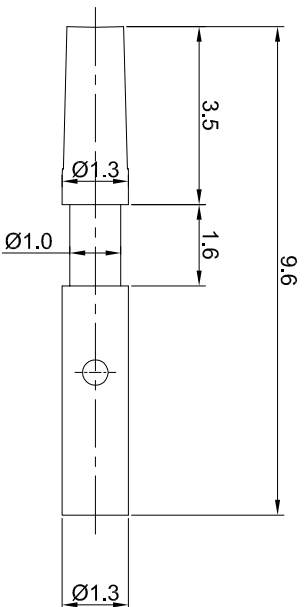


| REVISIONS | | | | |
|-----------|-----|------------------|-------------|--------------|
| REV | ECO | DESCRIPTION | DATE | BY APPR |
| A1 | - | RELEASED DRAWING | Jun.05.2018 | White TOMMIY |



- NOTES: UNLESS OTHERWISE SPECIFIED
- MATERIAL: COPPER ALLOY, GOLD PLATED
 - SPECIFICATIONS:
 - RATED CURRENT: 0.5 AMPS
 - CONTACT RESISTANCE: <12.5 milliohm
 - AVAILABLE WIRE RANGE: 22AWG~26AWG
 - ROHS COMPLIANT
 - ALL DIMENSIONS ARE FOR REFERENCE USE ONLY.

| QUANTITY | SEE PART NUMBER CHART | PART NUMBER | DESCRIPTION | ITEM |
|----------|-----------------------|-------------|-------------|------|
| 1 | | | | 1 |

MATERIALS LIST

| UNLESS OTHERWISE SPECIFIED | SIGNATURES | DATE |
|--|----------------|----------------------------|
| 1) All dimensions are in millimeters. 2) Tolerances are as follows: DEC 2014 15 3 PL DEC 2010 8 | White Tommy | Jun.05.2018 Jun.05.2018 |

| MATERIAL SPECIFICATIONS: | CUSTOMER: |
|--------------------------|-----------|
| 3) Note reference = | Tommy |

| PROCESS SPECIFICATIONS: | THIS DRAWING IS SUPPLIED FOR INFORMATION ONLY. DESIGN FEATURES, SPECIFICATIONS AND PERFORMANCE DATA ARE THE PROPERTY OF AMPHENOL CORPORATION. NO RIGHTS OR PERMISSIONS ARE GRANTED FOR REPRODUCTION OR TRANSMISSION IN ANY FORM OR BY ANY MEANS, ELECTRONIC OR MECHANICAL, INCLUDING PHOTOCOPYING, RECORDING, OR BY ANY INFORMATION STORAGE AND RETRIEVAL SYSTEMS. |
|-------------------------|--|
| NEST FASTEN: | Socket contact, 0.6mm, Crimp 22~26AWG |

| SCALE: | TYPE: | DWG NO: | REVISION: |
|--------|-------|----------|-----------|
| NONE | B C- | SC000460 | A1 |