

9115

TERMINAL INSULATOR-BLITE

5410 SCREW 8-32 THD-STEEL

3017-8 LOCKWASHER-STEEL

① TERMINAL, BRASS.

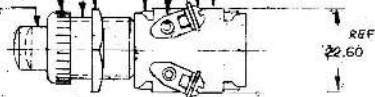
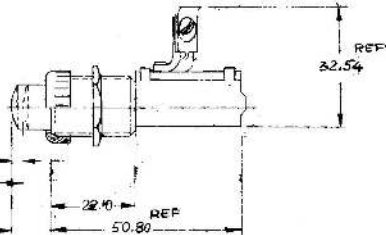
CASE STEEL

B507 PAL NUT, STEEL

BUSHING 5/8-32-UN-2A ALUMINUM

8304 FACE NUT-BRASS CHROME PLT

PLUNGER BUTTON BRASS ROLLED CHROME

REF  
22.60REF  
22.54

"NORMALLY ON"

OFF WHEN DEPRESSED 3.05  
AND THRU REMAINDER OF  
TRAVEL

31.01

22.40

REF

50.80

NOTE:

① ALL STEEL PARTS PLATED

METRIC

Confidential Property of Cole Hersee

DO NOT SCALE

LET.	WAS	DATE	BY	LET.	WAS	DATE	BY	MATERIAL	DRAWN	CHECKED	APPROV'D	SCALE	DATE DRAWN
								NOTED	MW	LPS	JS	1:1	2-12-87
								FINISH					DATE BLUEPRINT
								NOTE:					
								TOLERANCES	STARTER SWITCH				9115
								ORIGINAL ±					
								METRIC					