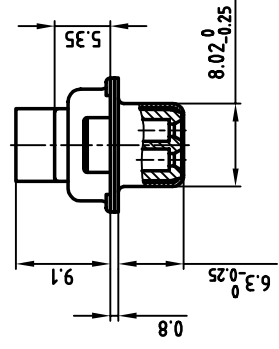
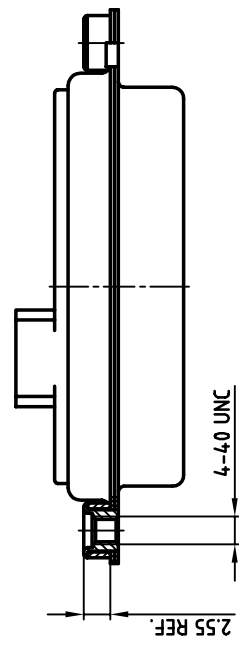
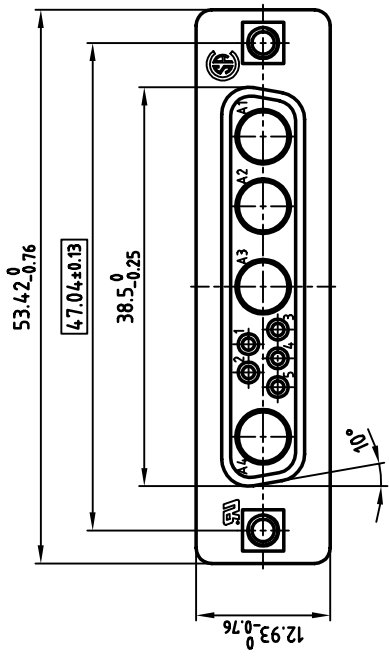
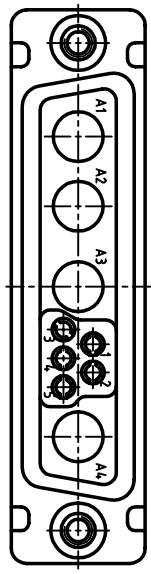


used for: D-SUB COMBINATION CRIMP



**NOTES:**

1. METALSHELLS: STEEL; min. 320µ" TIN
2. INSULATORS: PBT GF UL 94 V-0, BLACK
3. THREADED INSERT: COPPER ALLOY; min. 200µ" TIN over 80µ" NICKEL
4. COLLAR: COPPER ALLOY; min. 200µ" TIN over 80µ" NICKEL
5. MAXIMUM TORQUE VALUE FOR THREAD: 6" LBS
6.   = CRITICAL DIMENSION: SPC



THIS DRAWING MAY NOT BE COPIED OR REPRODUCED IN ANY WAY, AND MAY NOT BE PASSED ON TO A THIRD PARTY WITHOUT WRITTEN PERMISSION.  
 OWNERSHIP AND COPYRIGHT OF CONEC GMBH  
 DO NOT ALTER CAD DRAWING BY HAND

Directive 2002/95/EC  
 "RoHS"  
 Compliant

CONEC CORPORATION BRAMPTON, ONTARIO		tolerance		scale: material:	2:1 SEE NOTES
2001	date	name			
drawn	18.01.	Parei			
appd.	18.01.	Resonek			
norm					
e-old					
		<b>CONEC</b>		title: <b>D-SUB COMBINATION FEMALE</b> CRIMP STYLE 9W4S with threaded insert	
				dwg no: AutoCAD 2000 DIN-A 3 sh: 1/1	
				part no: <b>3009W4SXK99A30X</b>	
rev.	description	date	name		